 Weatherford®				RAPTOR NVISION LOG			
COMPANY WELL FIELD PROVINCE/COUNTY COUNTRY/STATE LOCATION				CAERUS OIL & GAS PUCKETT 21D-26 GRAND VALLEY GARFIELD USA / COLORADO			
SEC 26		TWP 06S	RGE 97W	Other Services SBT			
Latitude		Longitude		Permanent Datum GROUND LEVEL, Elevation 8396 feet Log Measured From KB, 30.00 feet above Permanent Datum Drilling Measured From KB			
API Number							
Date		19-MAY-2017		PERFORATION RECORD			
Run Number		ONE		Shot	Number	Depth From	Depth To
Service Order		182488322		Density	of Shots	feet	feet
Type Log		CREB					
Depth Driller		8993.00					
Depth Logger		8930.00					
Top Log Interval		5000.00					
Bottom Log Interval		8930.00					
Hole Fluid Type		WATER					
Hole Fluid Level		0.00					
Restriction ID		3.875					
Max Recorded Temp		235.00					
Well Head Pressure		0.00					
Well Head Equipment		N/A		CASING / TUBING RECORD			
Time Well Ready		ROA		Size	Weight	Depth From	Depth To
Time Logger Bottom		1300		inches	pounds/ft	feet	feet
Unit		14333		4.500	11.60	0.00	8976.00
Equipment Name		WSS-E					
Base		CASPER					
Recorded By		P. MAZUR					
Witnessed By		NOT WITNESSED					

CASING / TUBING RECORD						
Type	Grade	TypeJoint	Size inches	Depth From feet	Shoe Depth feet	Weight pounds/ft
			4.500	0.00	8976.00	11.60

REMARKS
SOFTWARE VERSION 17.01.6744 - DEVELOPMENT BUILD VERSION
ALL DEPTH CONTROL PROCEDURES FOR SUBSEQUENT RUN IN HOLE WERE FOLLOWED. LOG RUN FROM 30' K.B.
SURFACE SYSTEM USED: WCM-D 307
TOOLS RUN: WCCC, UGRK, QPGE, TMPN, CRPB, CRMB, UGRK WERE RAN IN COMBINATION
GAMMA RAY COUNTS ON SUBSEQUENT PASSES ARE AFFECTED BY RESIDUAL NEUTRON ACTIVATION CAUSED BY THE PREVIOUS PASS
BOTTOM HOLE TEMPERATURE WAS DEG. 235F

In interpreting, communicating or providing information and/or making recommendations, either written or oral, as to logs or test or other data, type or amount of material, or Work or other service to be furnished, or manner of performance, or in predicting results to be obtained, the Contractor will give the Company the benefit of the Contractor's best judgment based on its experience and will perform all such Work in a good and workmanlike manner. Any interpretation of test or other data, and any recommendation or reservoir description based upon such interpretations, are opinions based upon inferences from measurements and empirical relationships and assumptions, which inferences and assumptions are not infallible, and with respect to which professional engineers and analysts may differ. ACCORDINGLY ANY INTERPRETATION OR RECOMMENDATION RESULTING FROM THE SERVICES WILL BE AT THE SOLE RISK OF THE COMPANY, AND THE CONTRACTOR CANNOT AND DOES NOT WARRANT THE ACCURACY, CORRECTNESS OR COMPLETENESS OF ANY SUCH

INTERPRETATION OR RECOMMENDATION, WHICH INTERPRETATIONS AND RECOMMENDATIONS SHOULD NOT, THEREFORE, UNDER ANY CIRCUMSTANCES BE RELIED UPON AS THE SOLE OR MAIN BASIS FOR ANY DRILLING, COMPLETION, WELL TREATMENT, PRODUCTION OR FINANCIAL DECISION, OR ANY PROCEDURE INVOLVING ANY RISK TO THE SAFETY OF ANY DRILLING ACTIVITY, DRILLING RIG OR ITS CREW OR ANY OTHER INDIVIDUAL. THE COMPANY HAS FULL RESPONSIBILITY FOR ALL DECISIONS CONCERNING THE SERVICES.

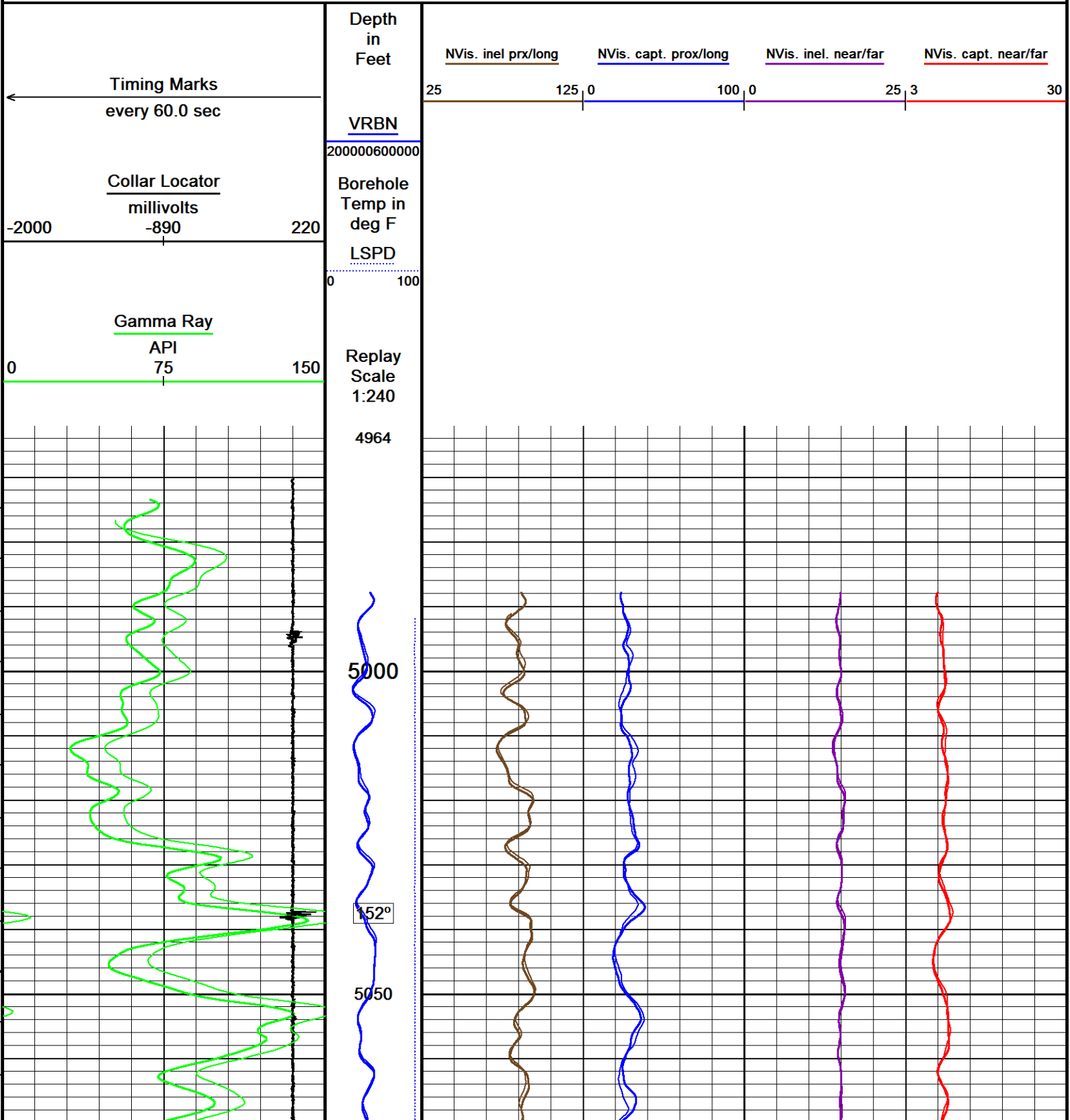
↓

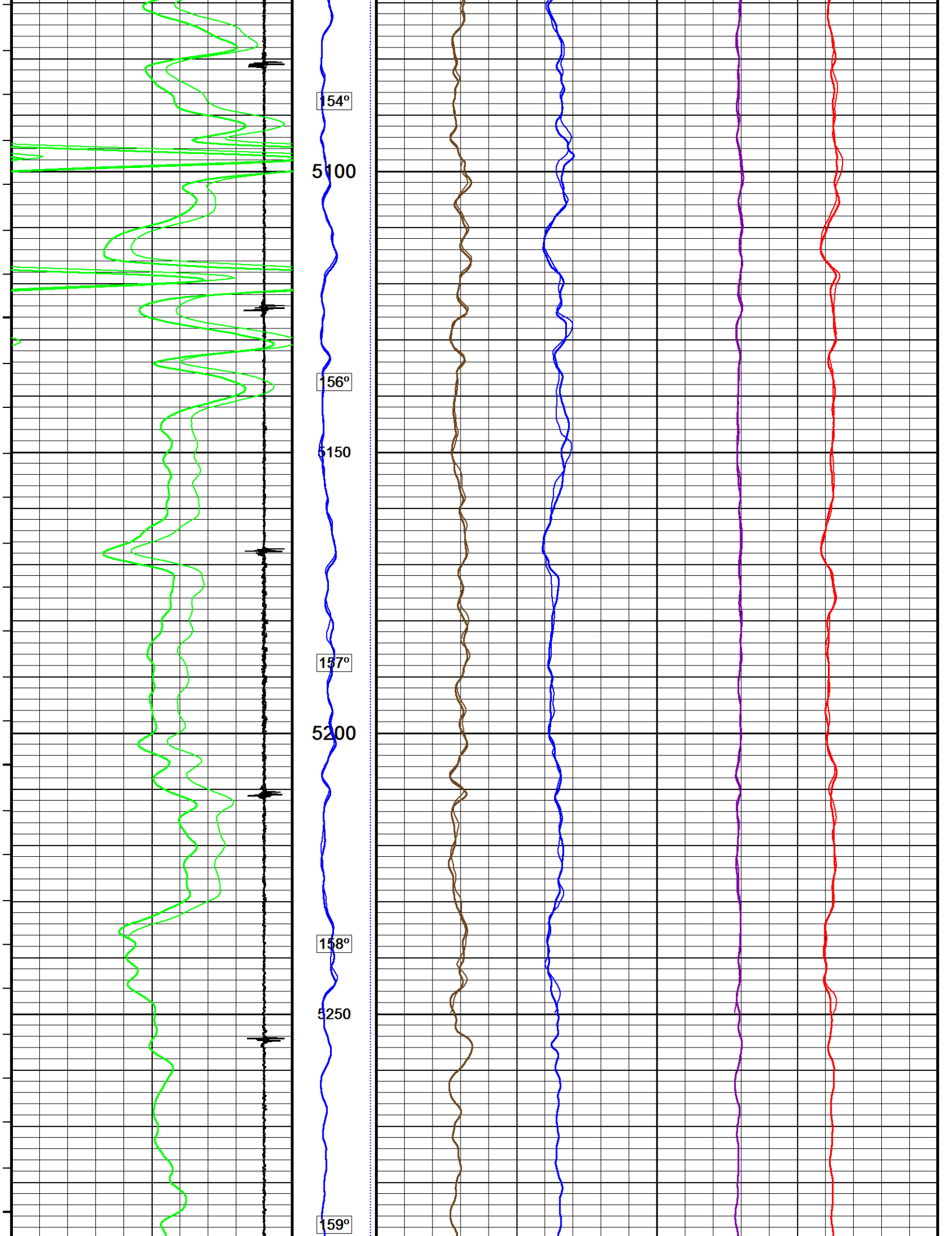
MAIN PASS
REPEAT PASS

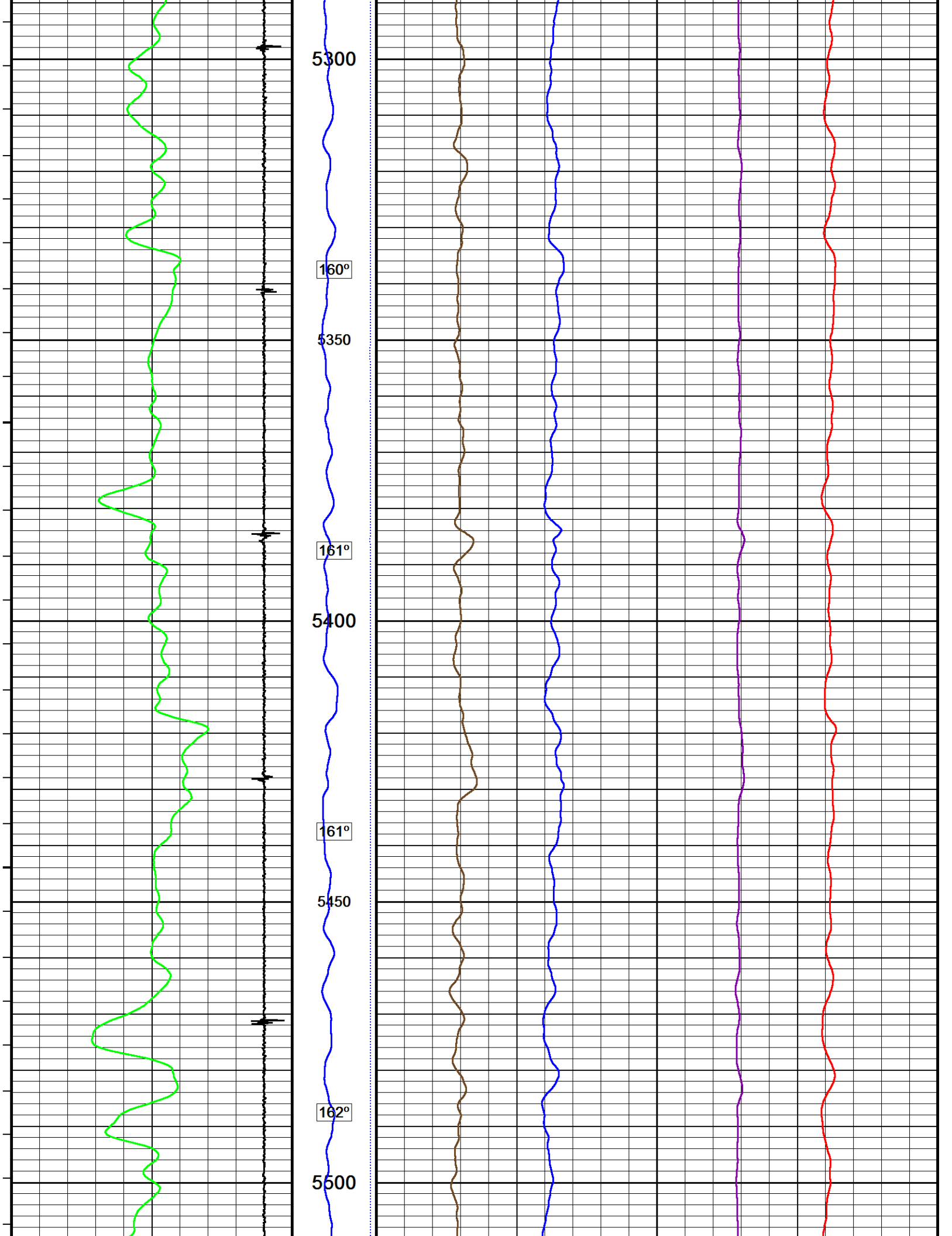
↓

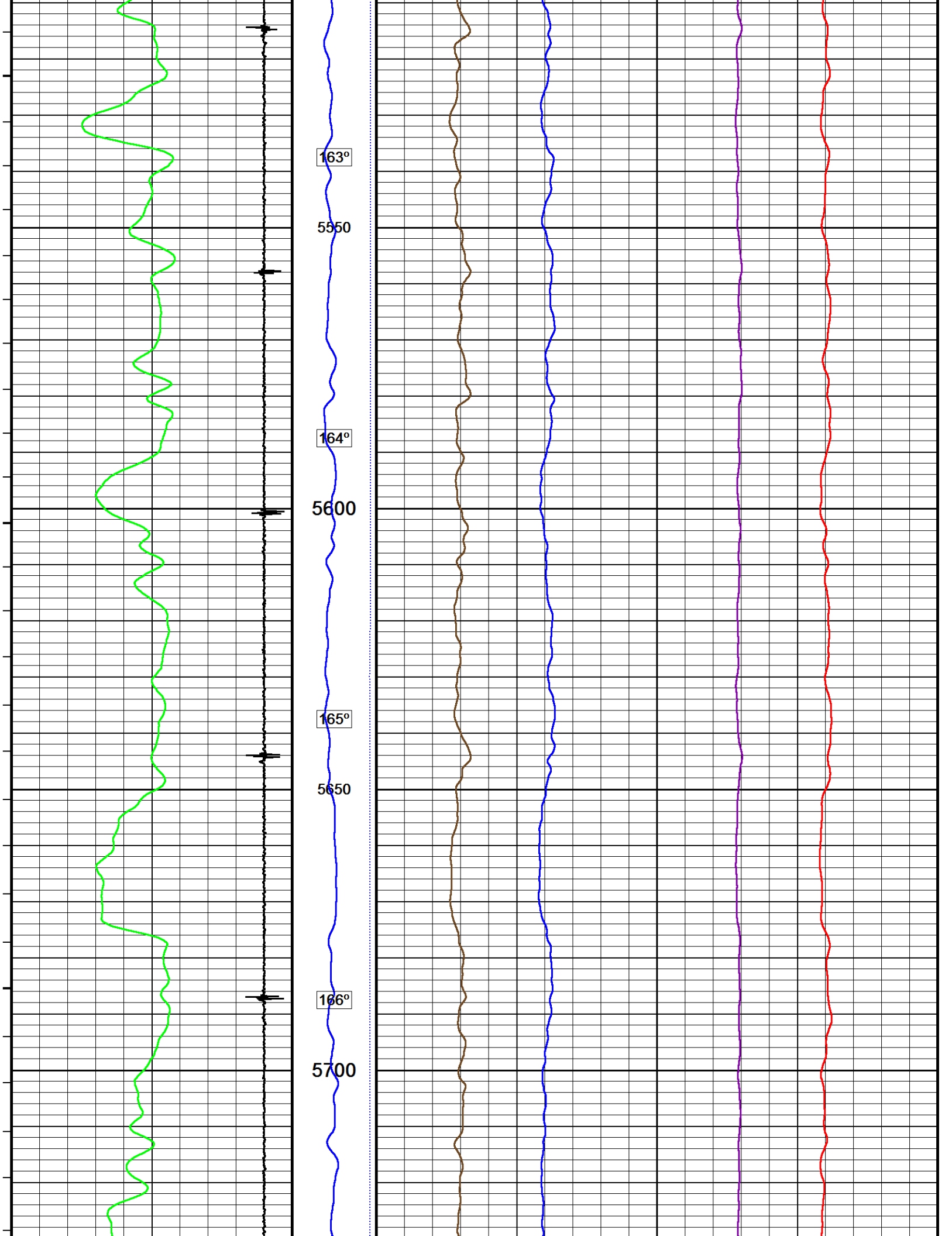
Depth Based Data - Maximum Sampling Increment 12.5cm
Filename: F:\PUCKETT_21D_26_CRE\PUCKETT_21D_26_CREB_NVISION_MAIN.dta
Filename: F:\PUCKETT_21D_26_CRE\PUCKETT_21D_26_CREB_NVISION_REPEAT.dta
System Versions: Logged with 17.01.6744 Plotted with 17.01.6744

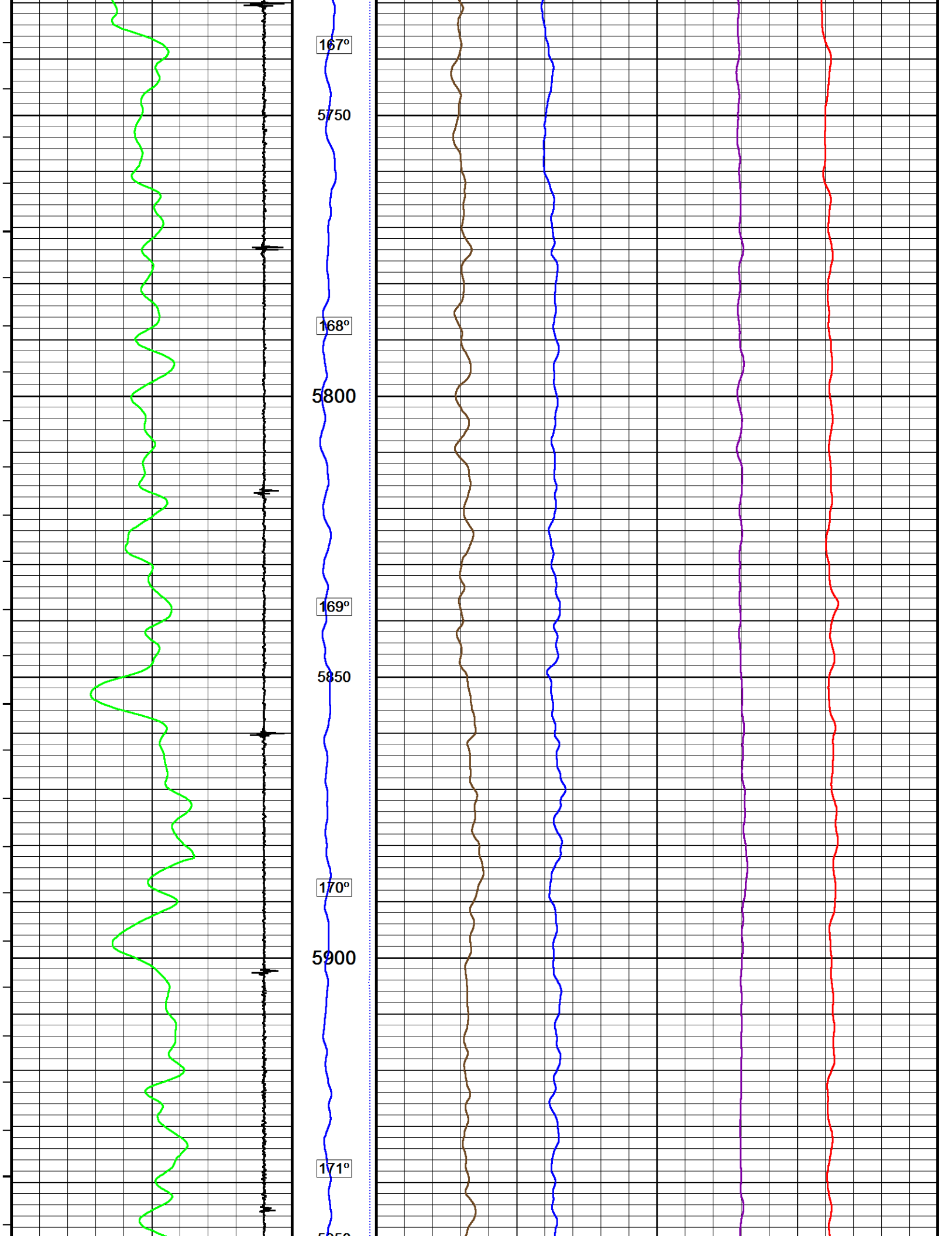
Plotted on 20-MAY-2017 11:00
Recorded on 19-MAY-2017 13:26
Recorded on 19-MAY-2017 21:56

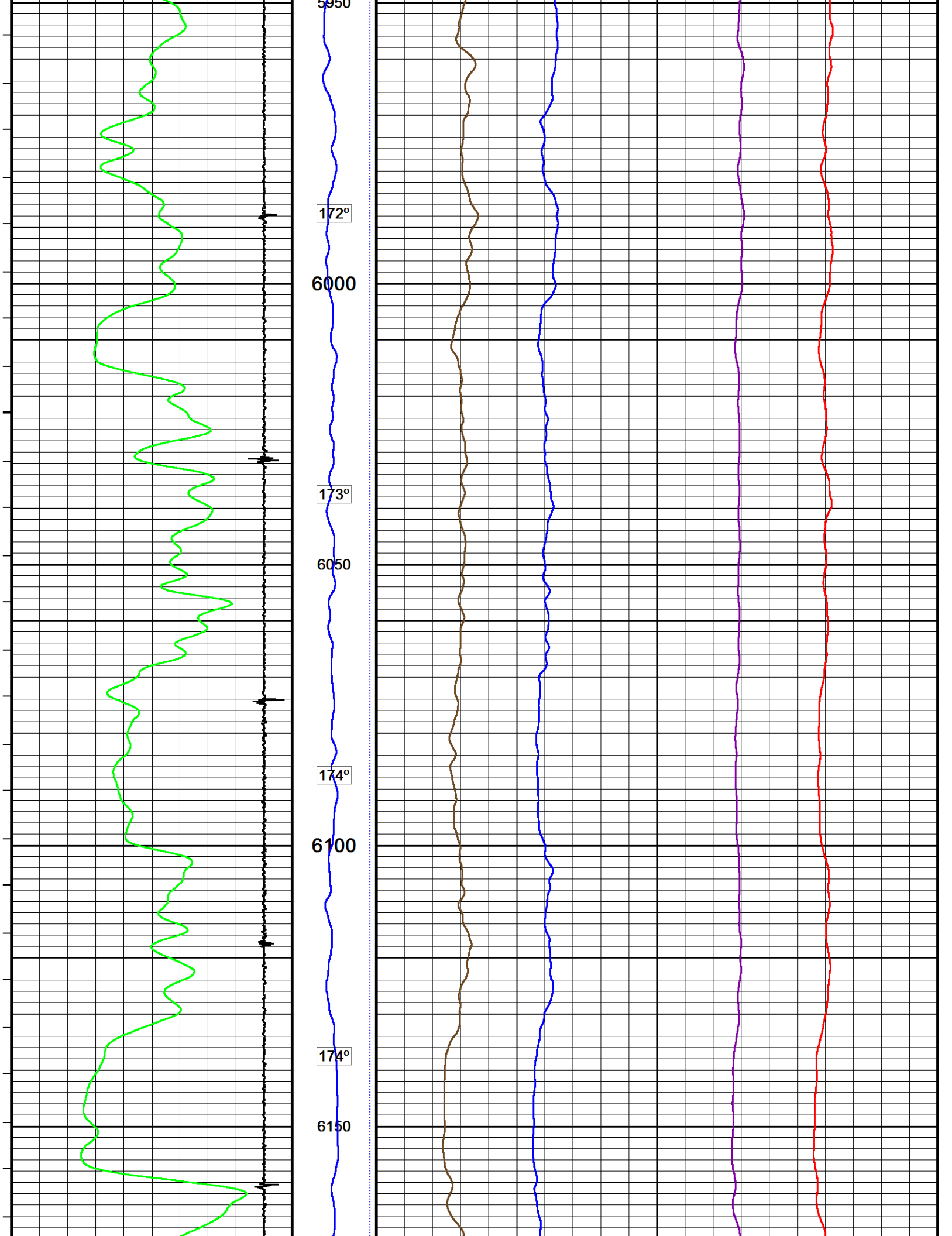


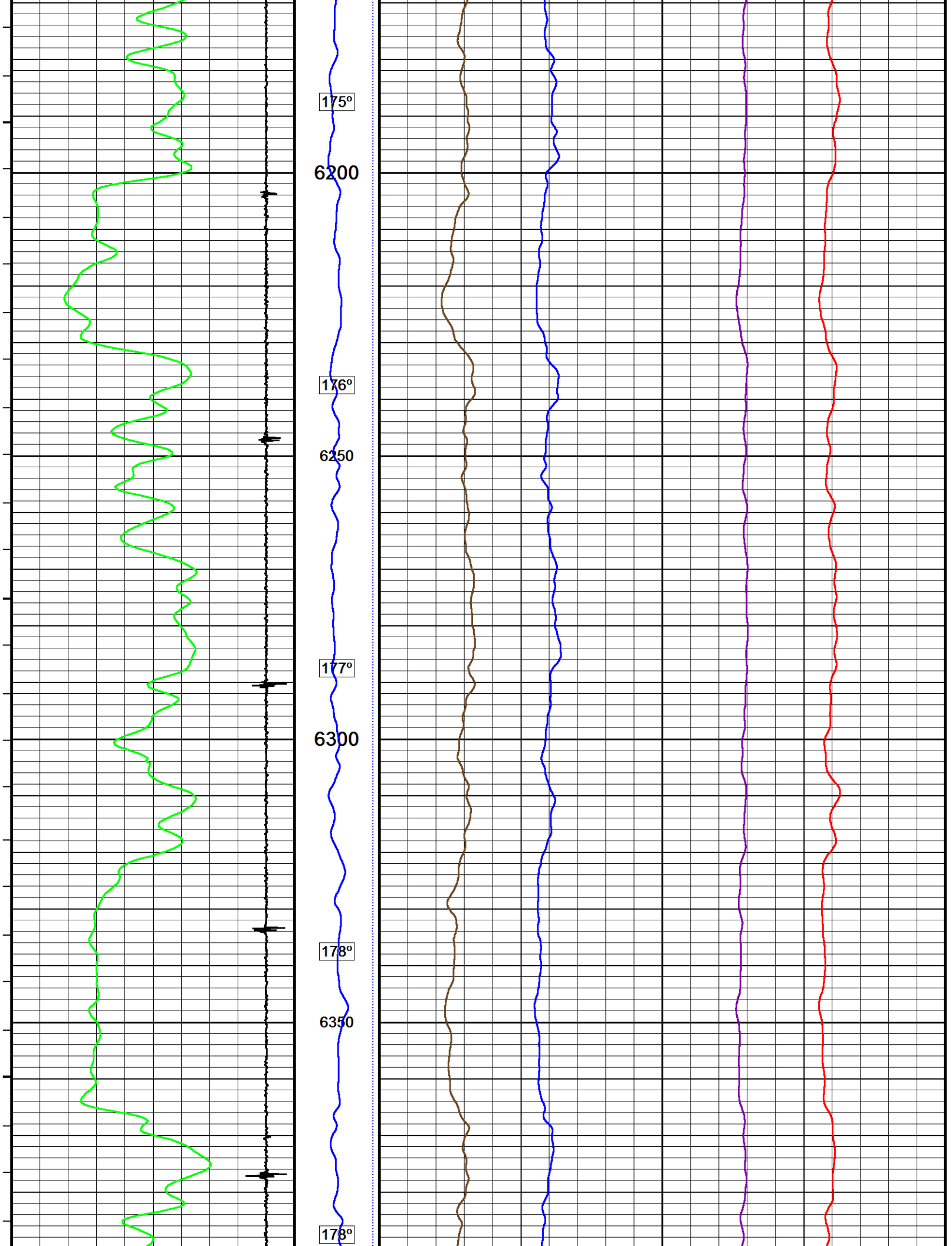


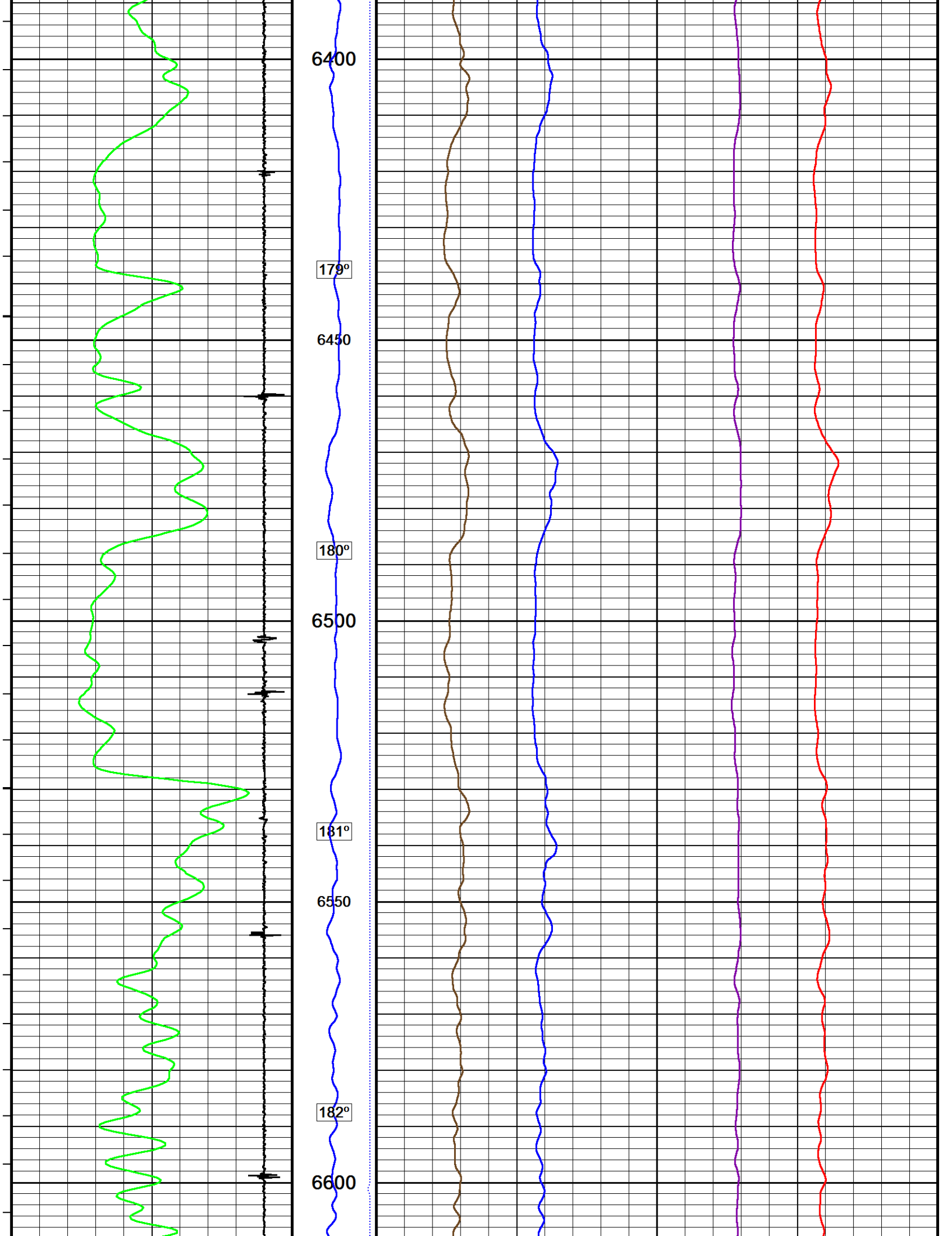


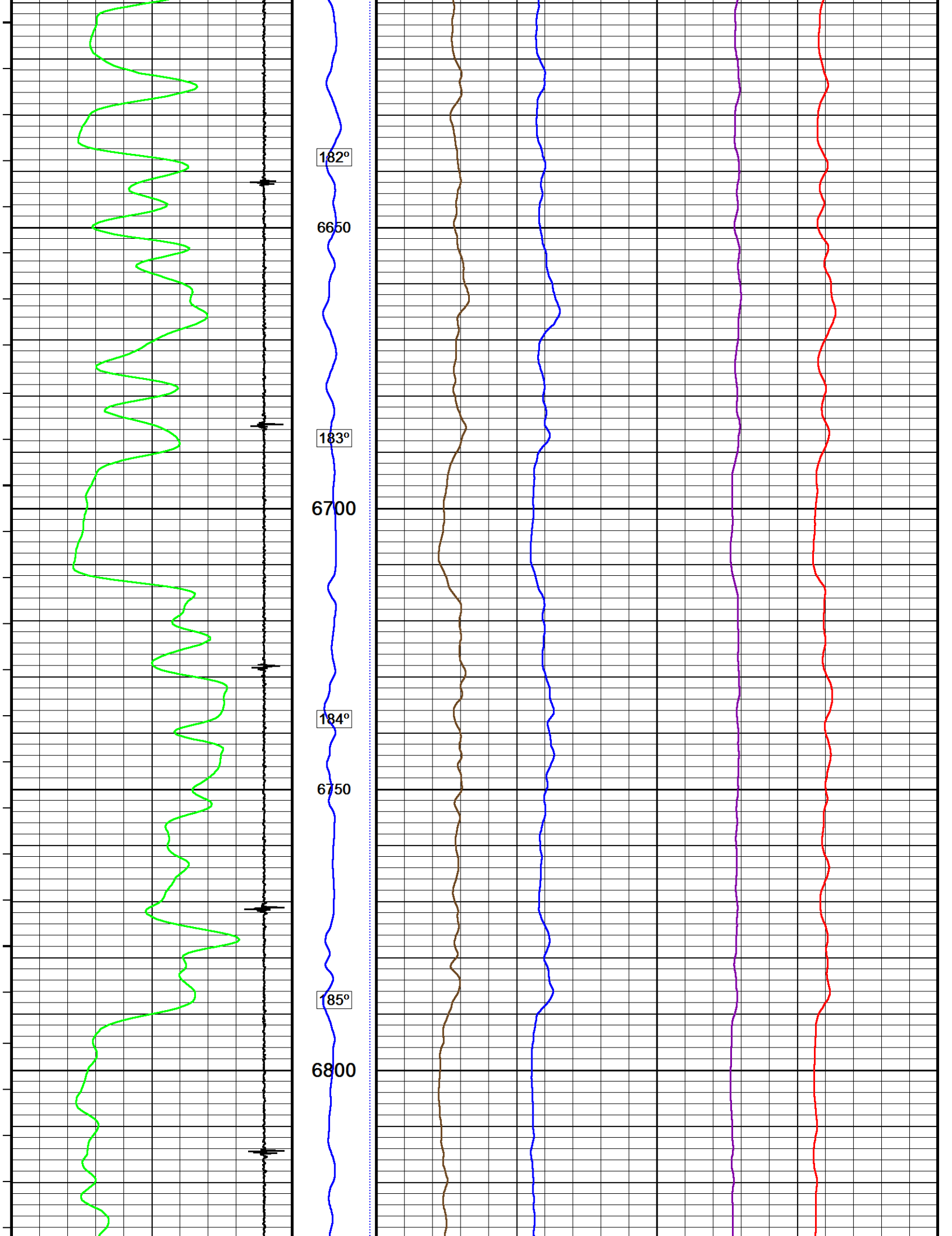


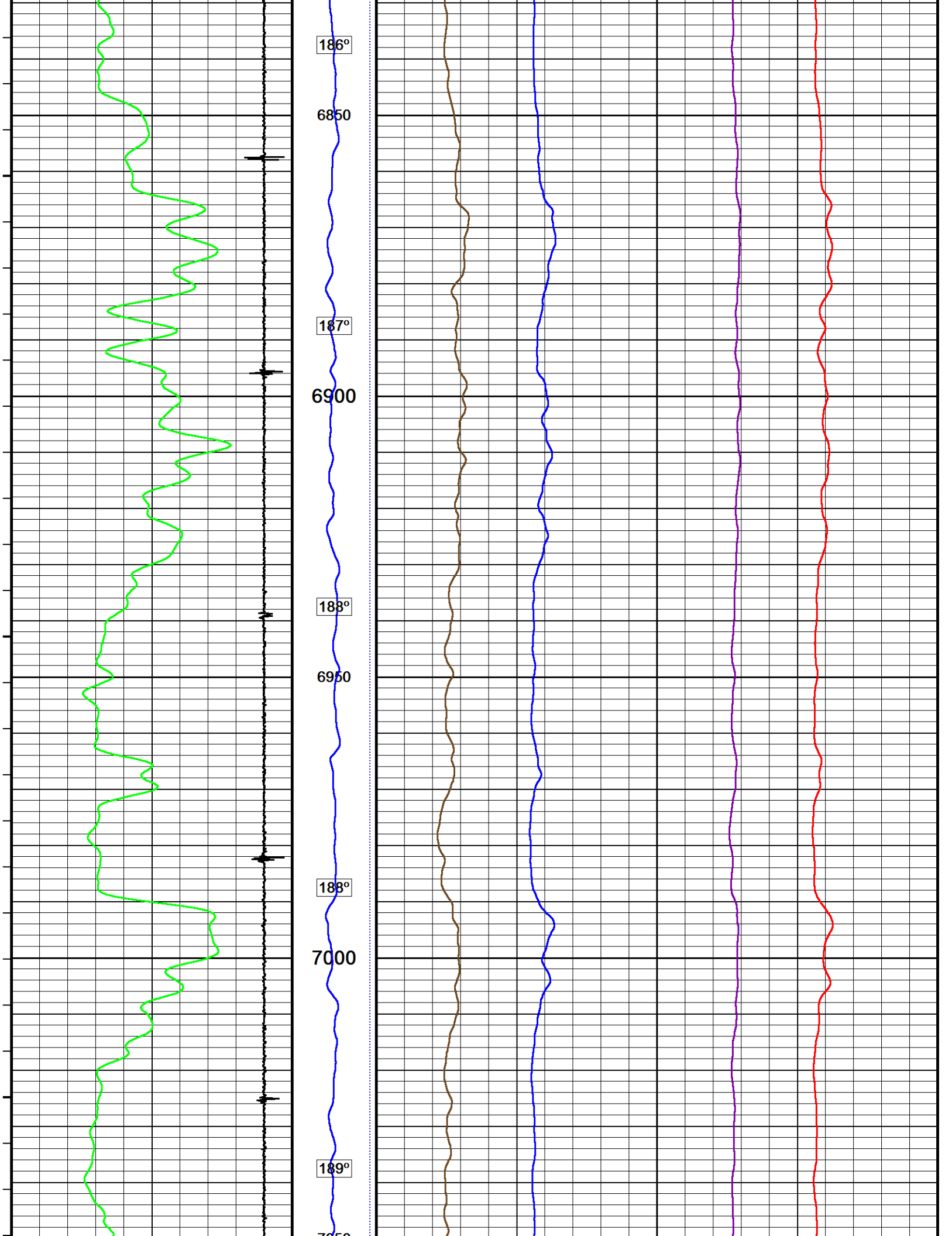


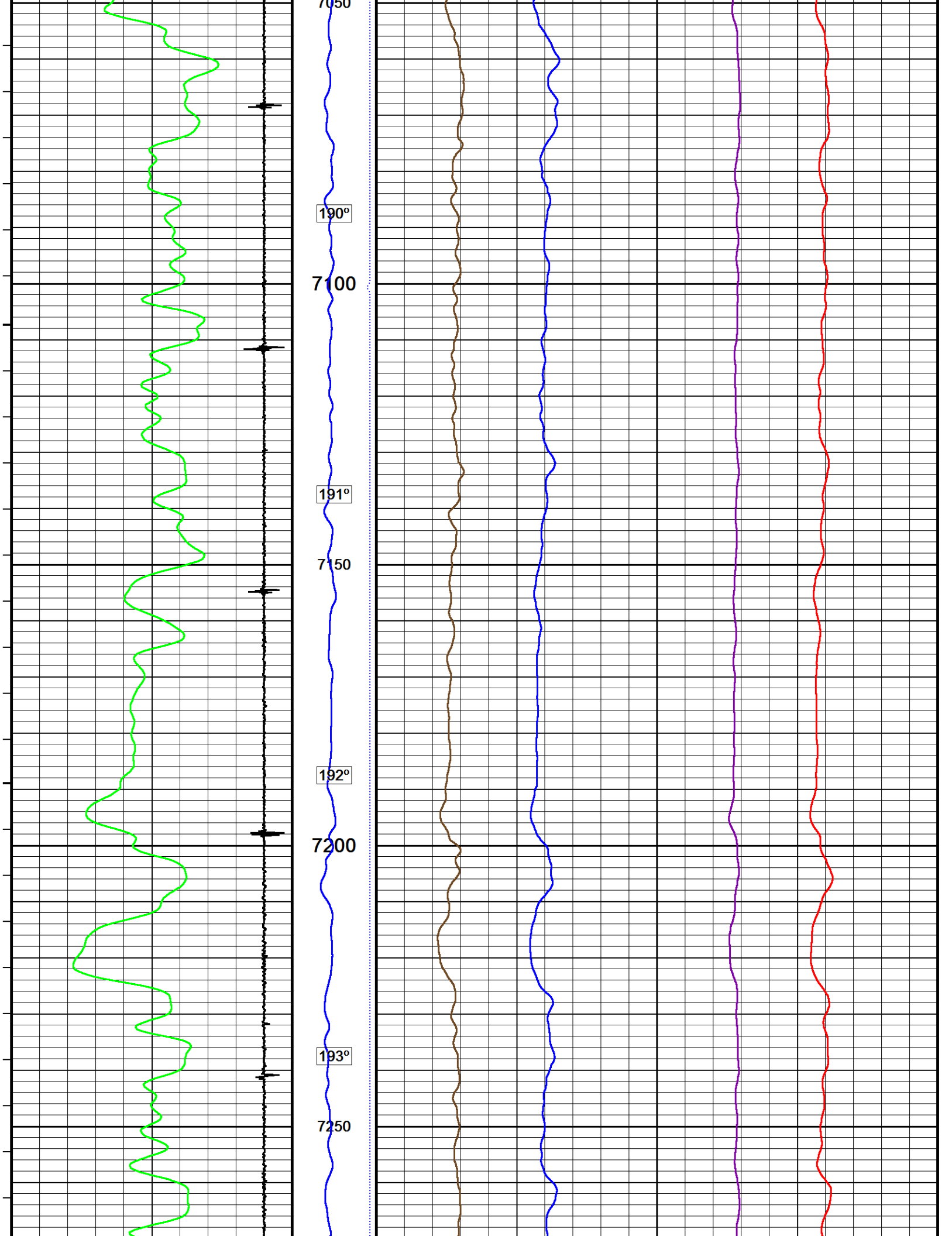


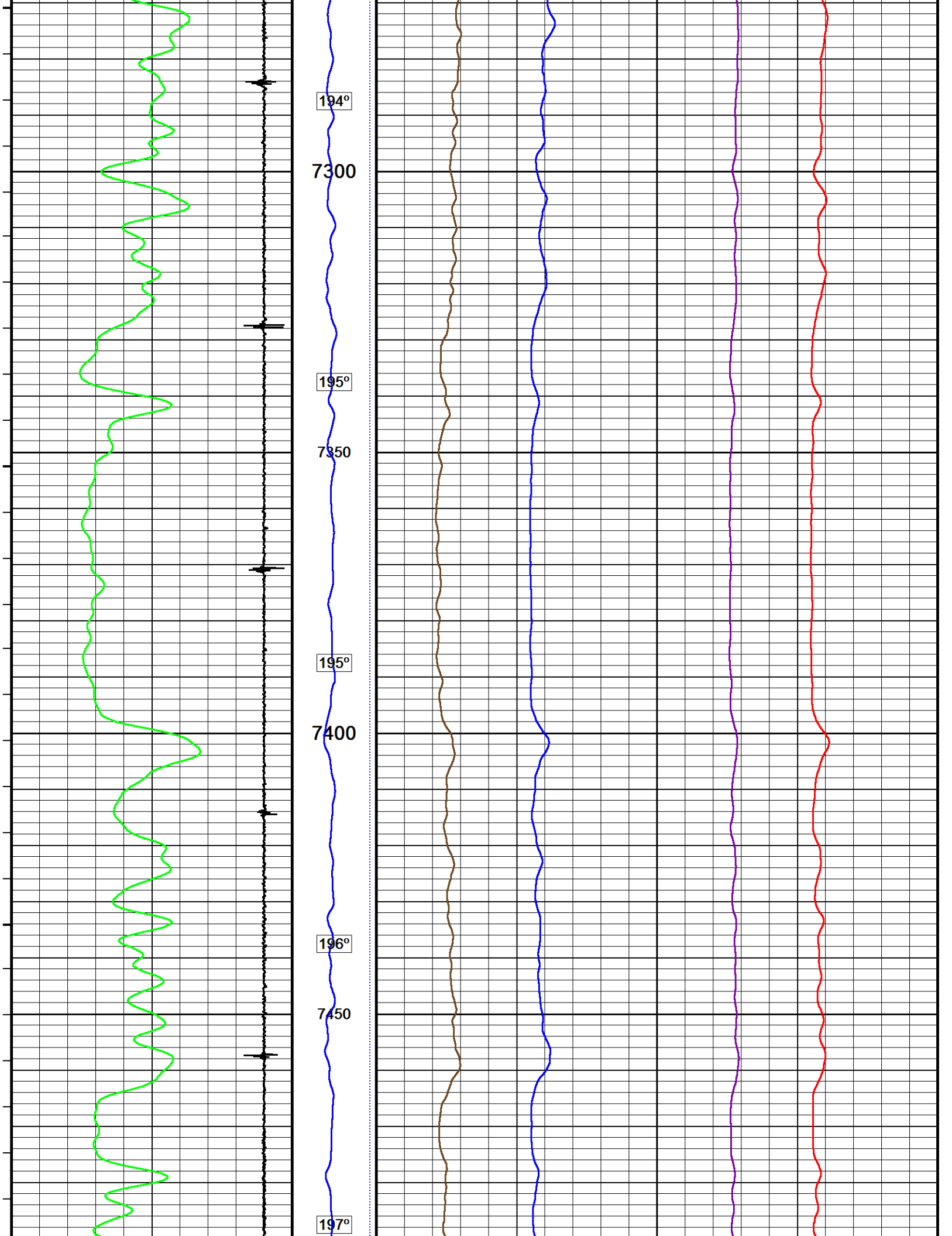


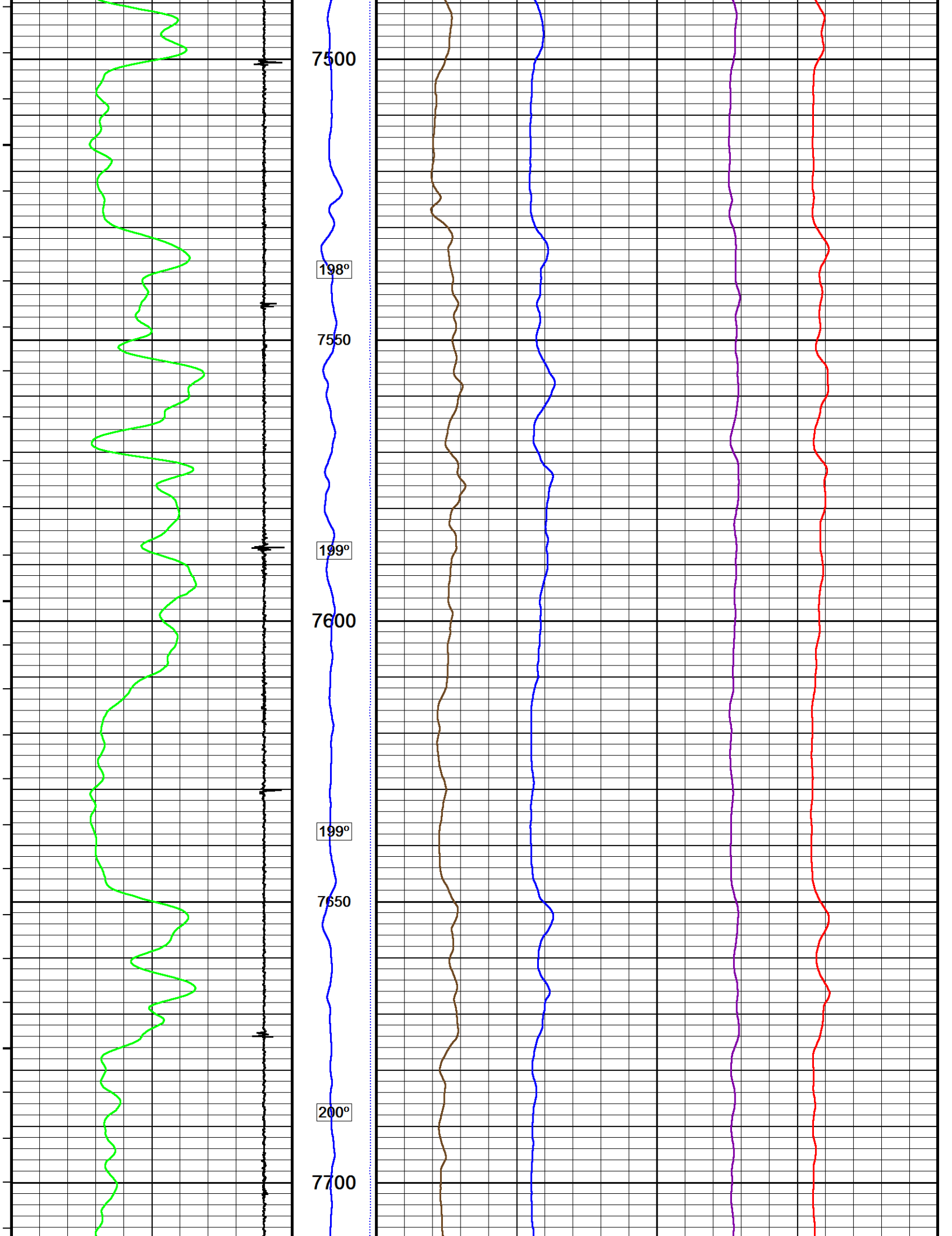


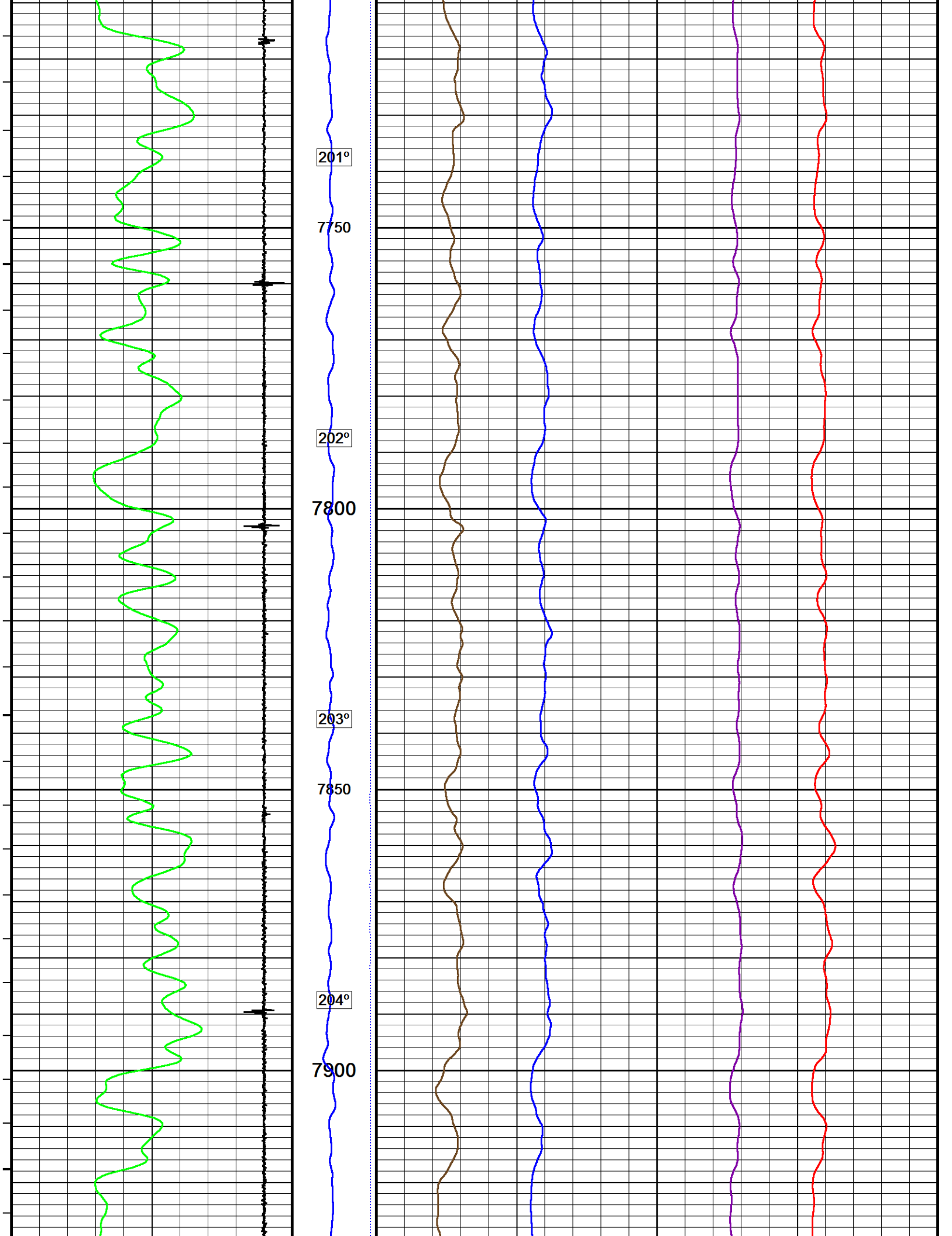


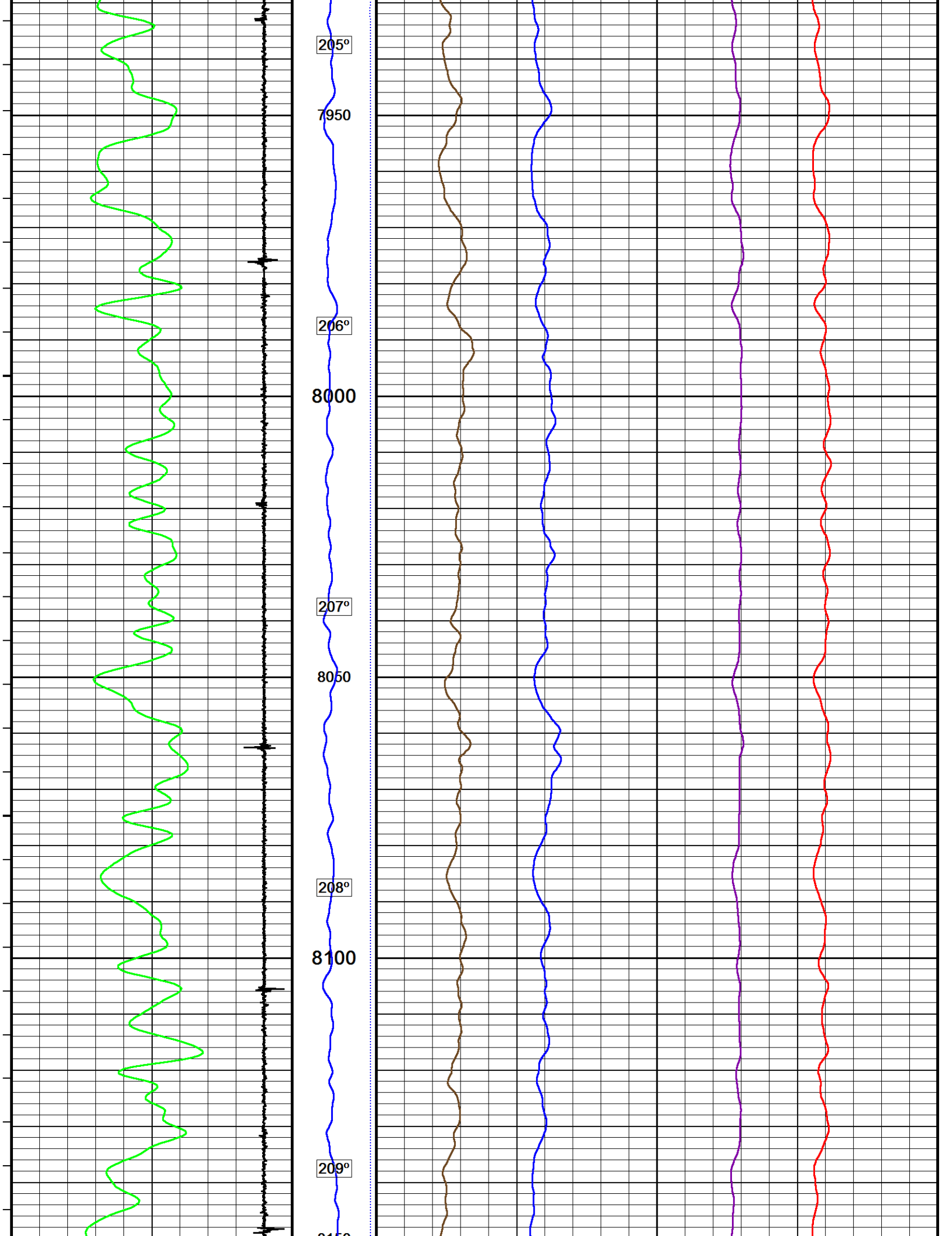


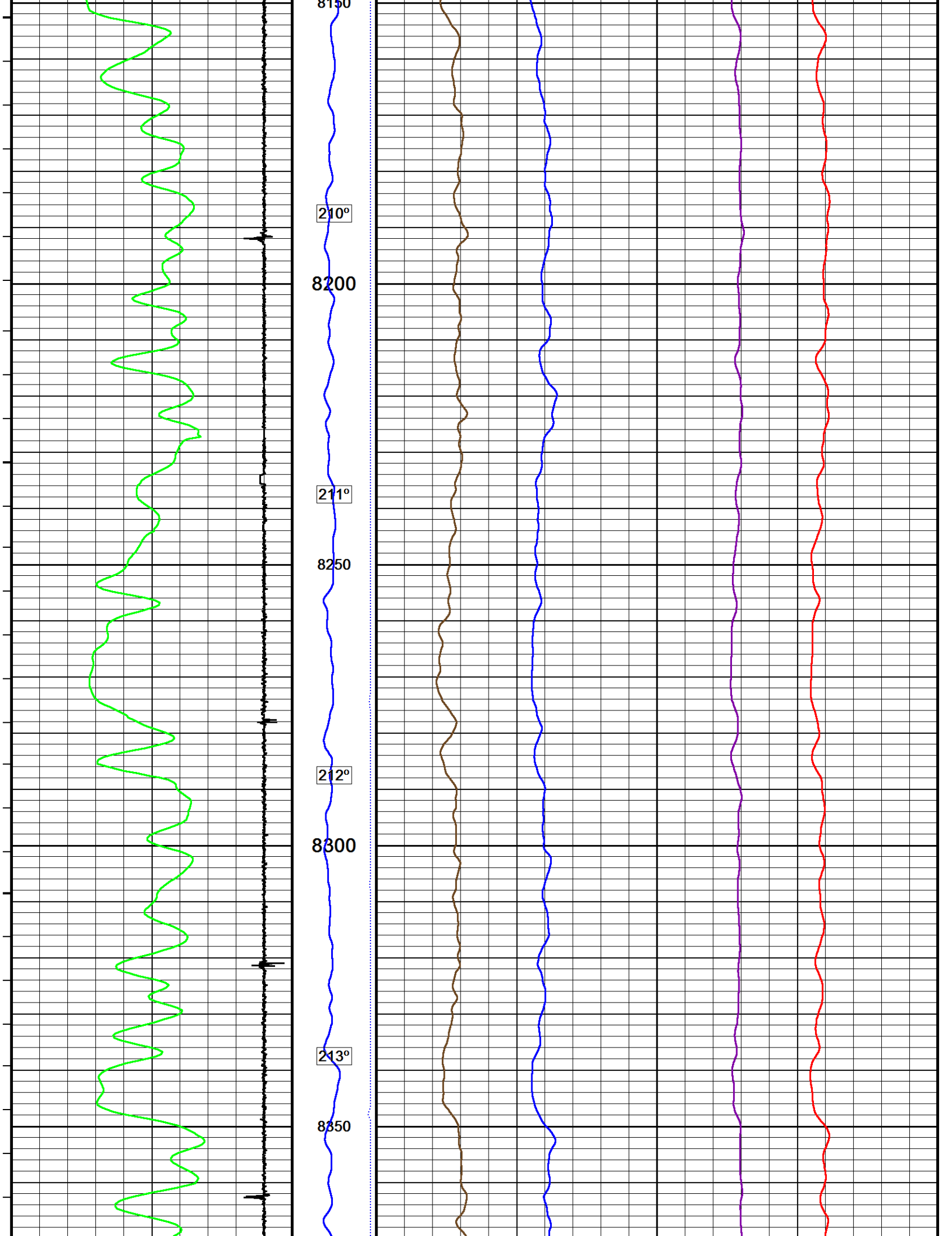


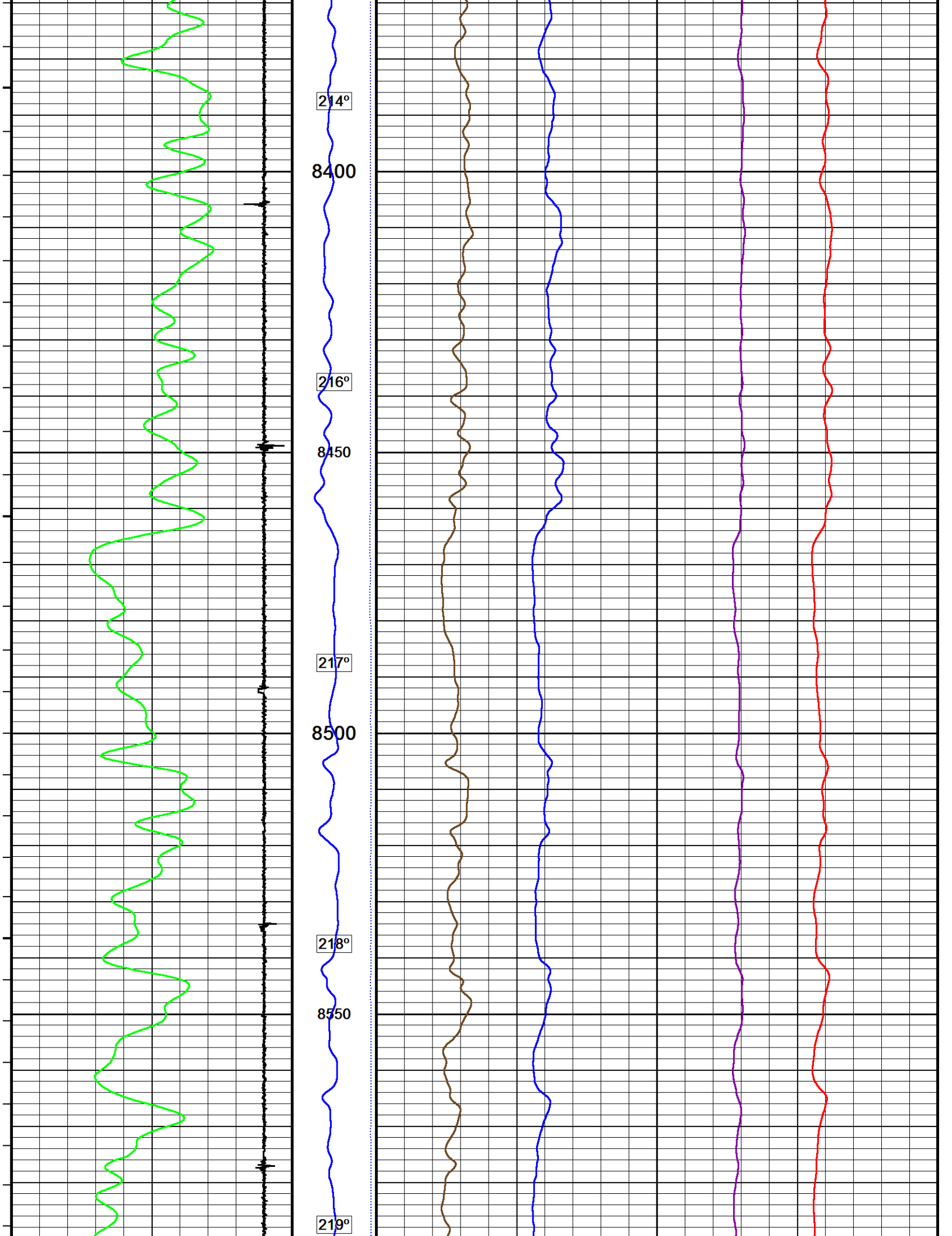


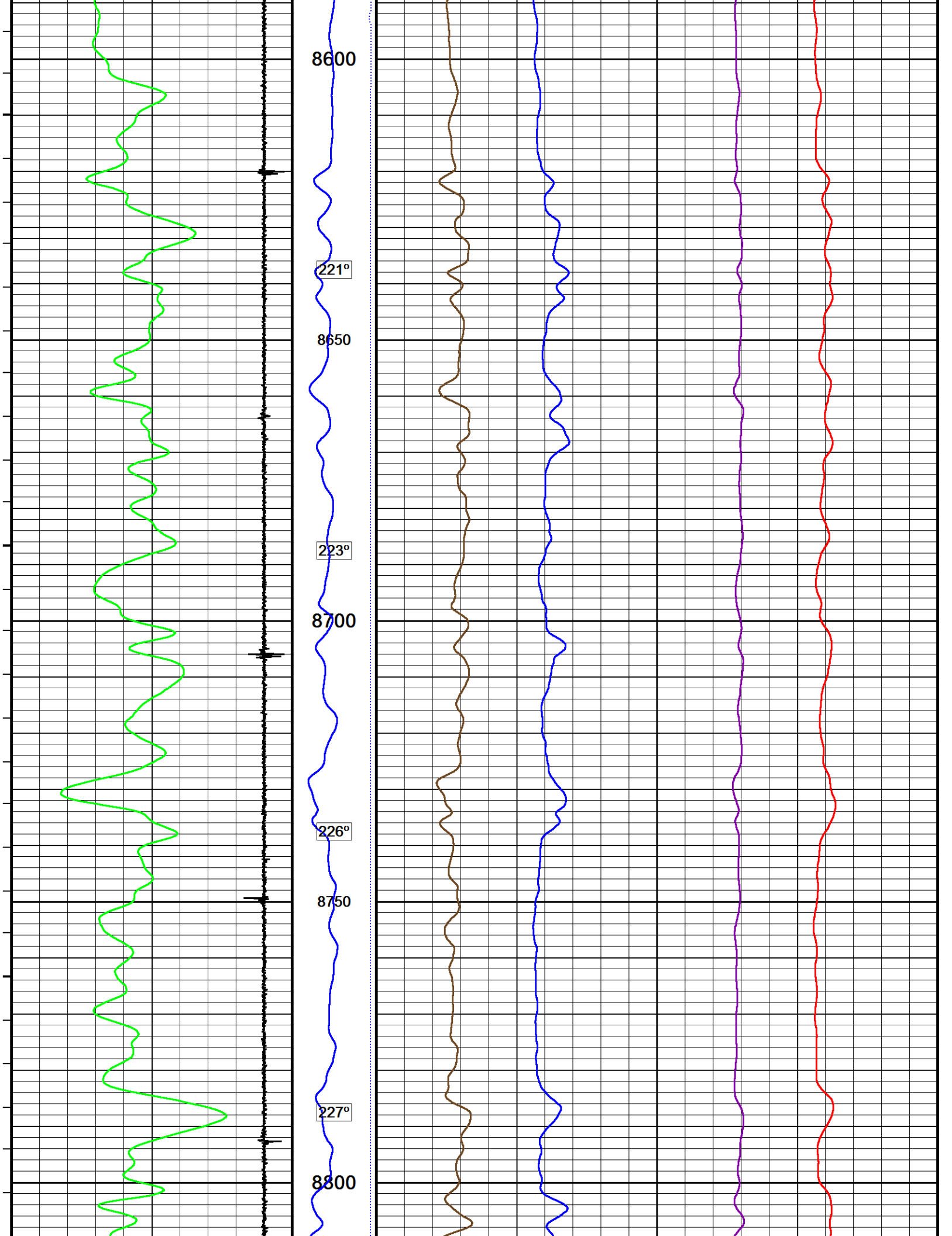


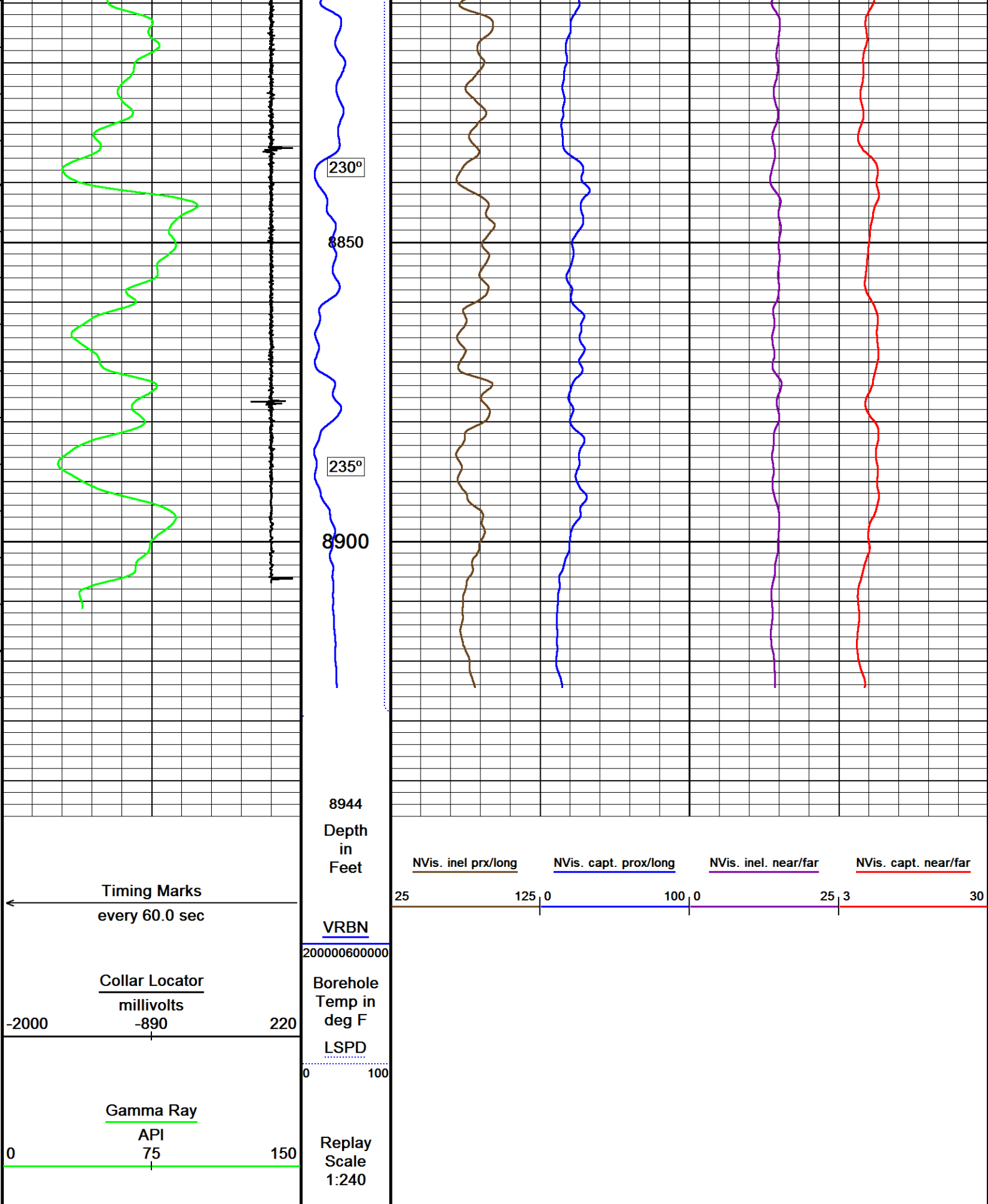












MAIN PASS REPEAT PASS

↓

REPEAT PASS

↓

Depth Based Data - Maximum Sampling Increment 12.5cm

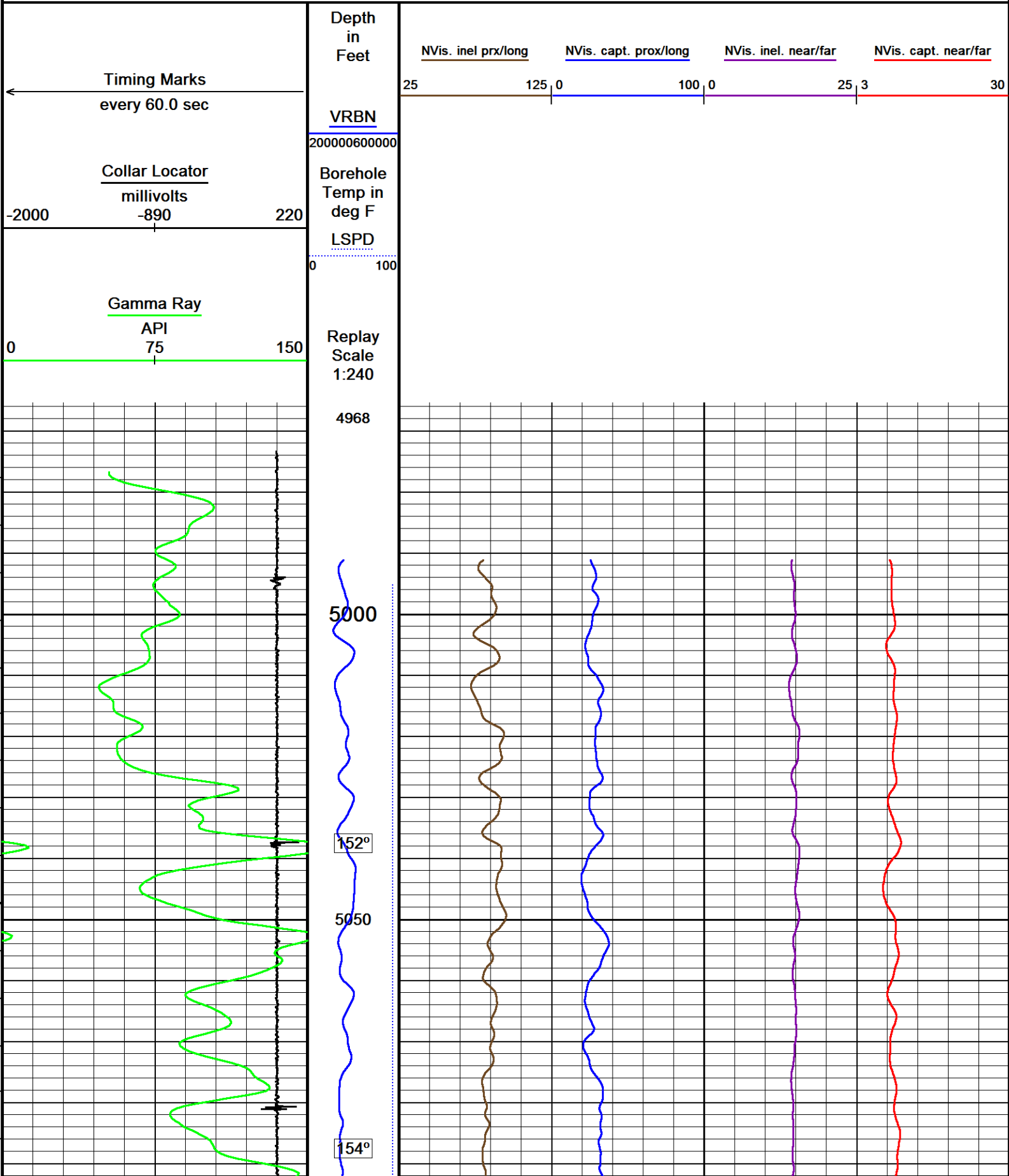
Plotted on 20-MAY-2017 11:00

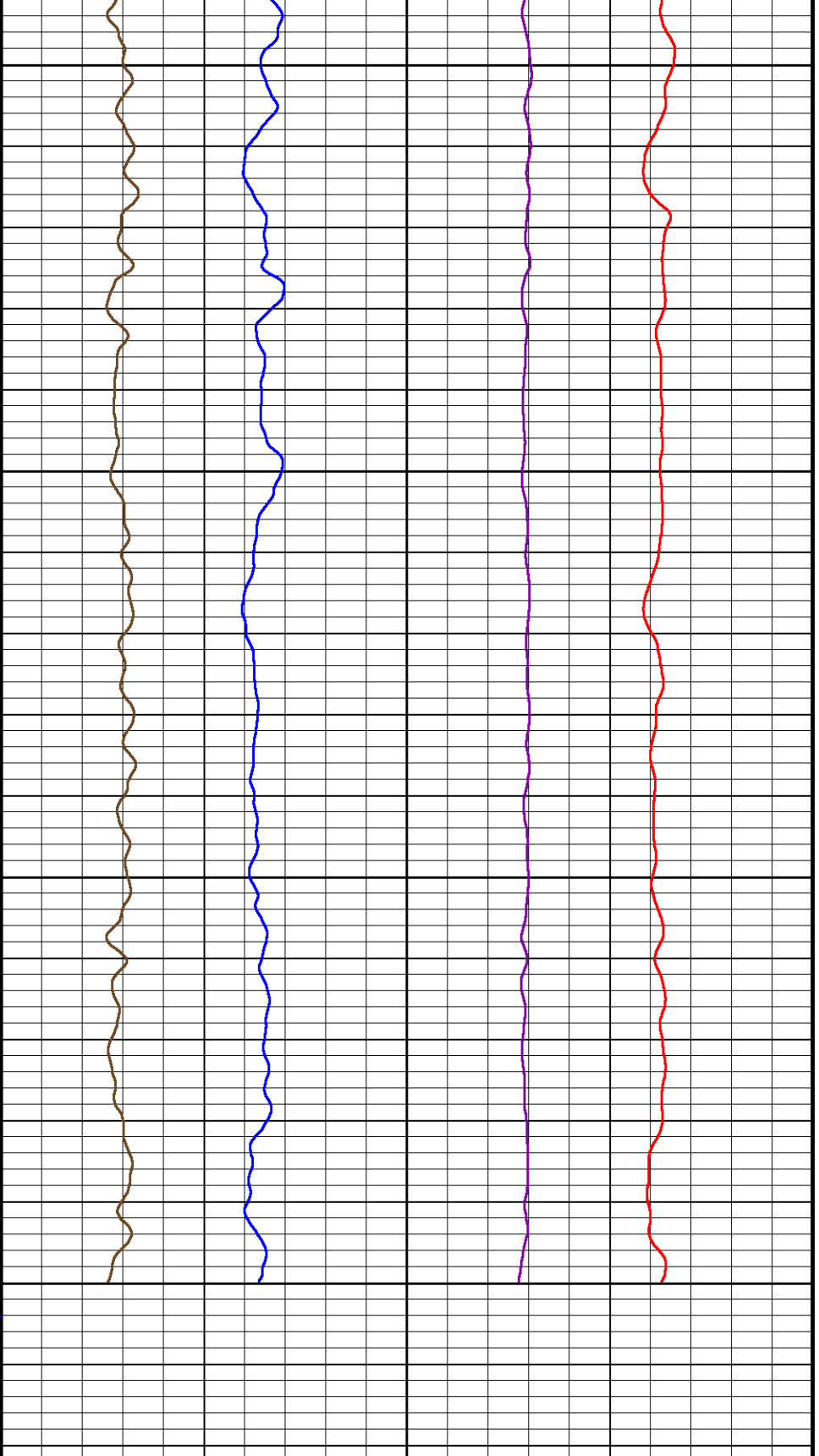
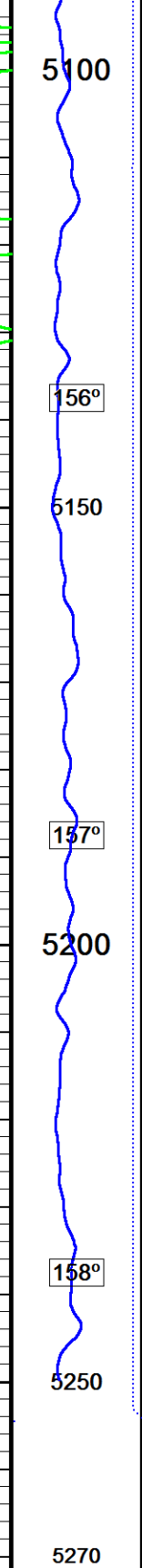
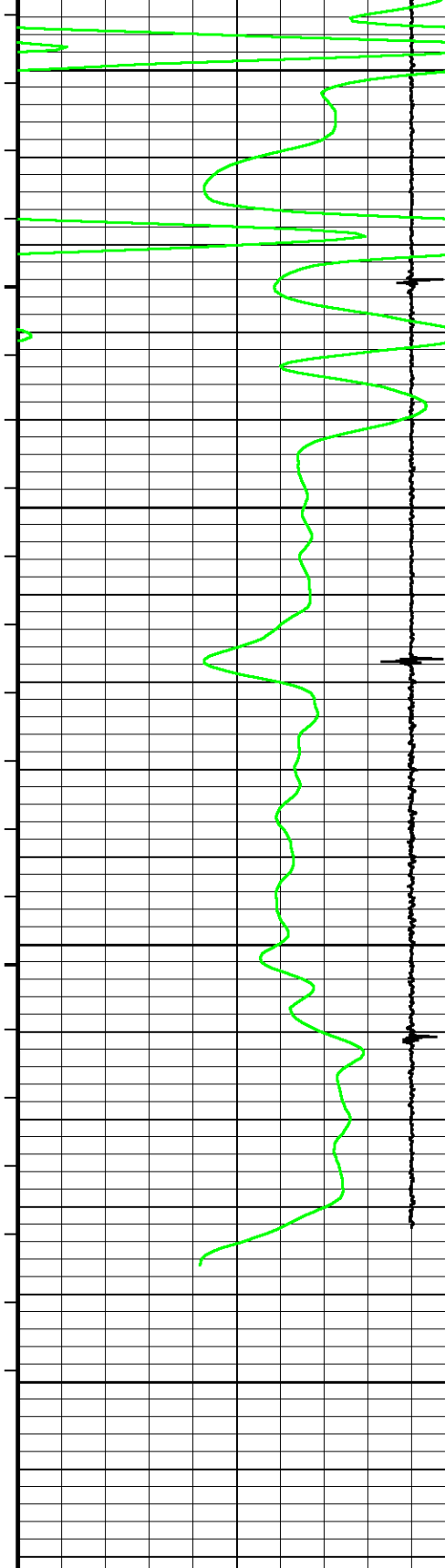
Filename: F:\PUCKETT_21D_26_CRE\PUCKETT_21D_26_CREB_NVISION_REPEAT.dta

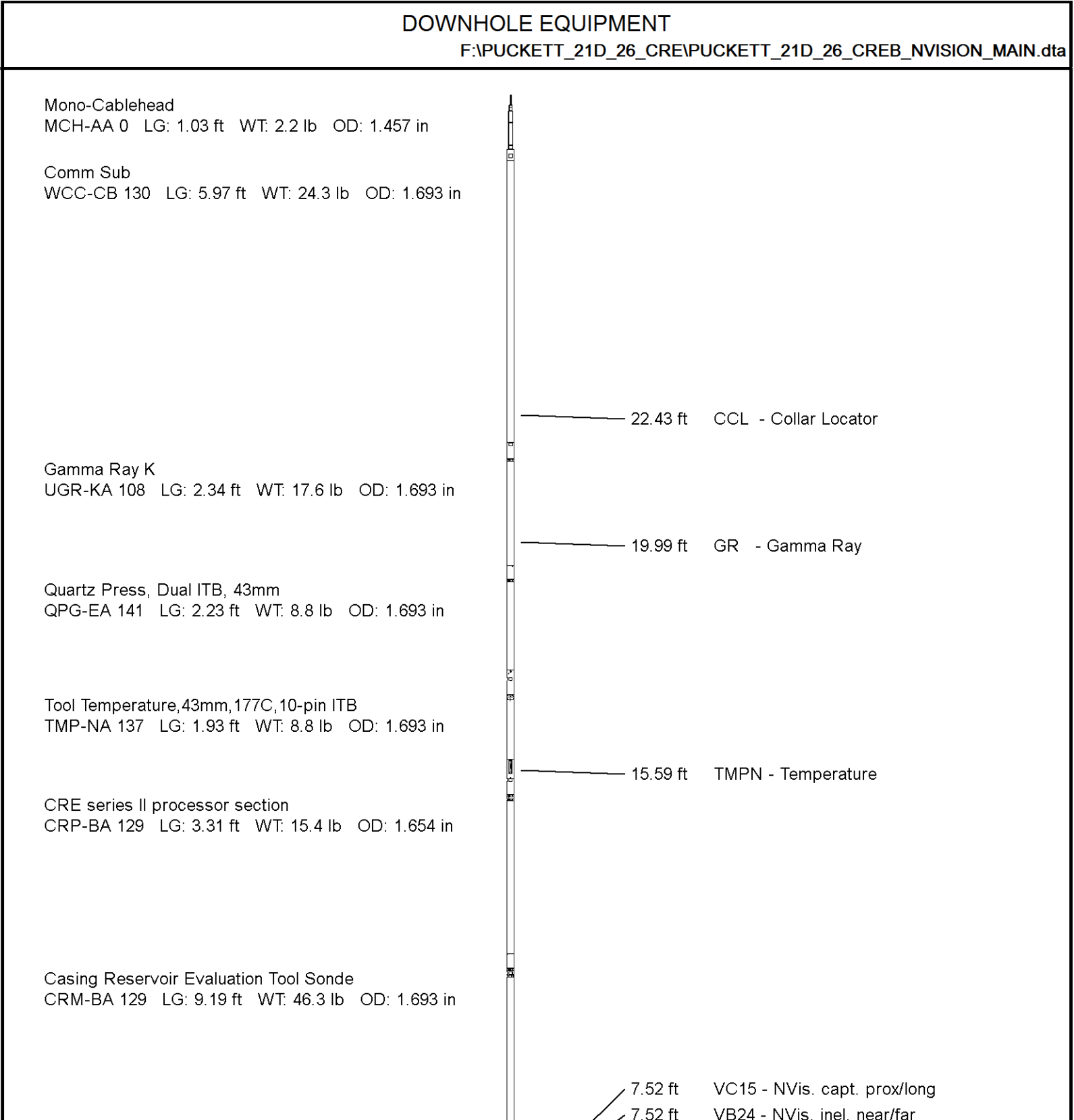
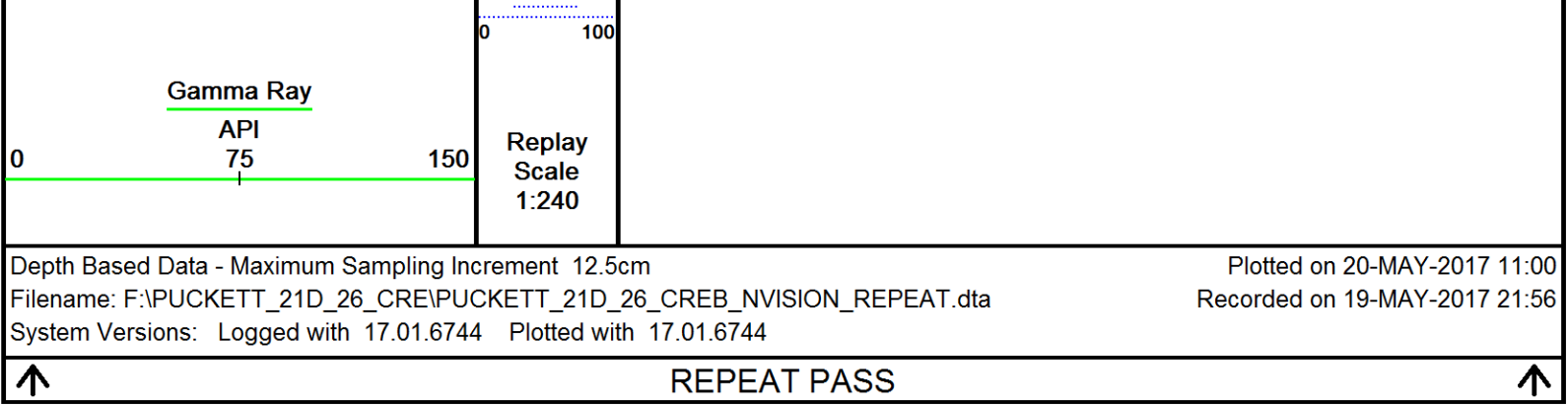
Recorded on 19-MAY-2017 21:56

System Versions: Logged with 17.01.6744

Plotted with 17.01.6744







7.52 ft VB15 - NVis. inel prx/long
 7.52 ft VC24 - NVis. capt. near/far
 7.52 ft VRBN - VRBN

Gamma Ray K
 UGR-KA 131 LG: 2.34 ft WT: 17.6 lb OD: 1.693 in

Terminator sub
 TSH-C 0 LG: 0.27 ft WT: 2.2 lb OD: 1.654 in

Total Length: 28.60 ft Weight: 143.3 lb

Tool Zero (0.00ft from bottom)

All measurements relative to tool zero.

SHOP AND FIELD CALIBRATIONS

F:\PUCKETT_21D_26_CRE\PUCKETT_21D_26_CREB_NVISION_MAIN.dta

UGK Before Survey Cal UGR-KA 108

Field calibration on 26-APR-2017 13:22

Gamma Ray Before Survey Calibration

Tool Type: UGR-KA
 Calibrator No: MCGGRCC144

Serial No: 108

Background	Calibrator	Standard	Units
39.7	852.4	486.5	API

Delta Counts Per Sec: 812.7 CPS/API = 1.671

Temperature Tool Shop Survey Calibration TMP-NA 137

Temperature Tool Shop Survey Calibration

Tool Type: TMP-NA

Serial No: 137

calibration

Standard	Measured
32 DEGF	36714 HZ
212 DEGF	50849 HZ

UGK Before Survey Cal UGR-KA 131

Field calibration on 26-APR-2017 13:52

Gamma Ray Before Survey Calibration

Tool Type: UGR-KA
Calibrator No: MCGGRCC144

Serial No: 131

Background	Calibrator	Standard	Units
------------	------------	----------	-------

27.9	848.9	486.5	API
------	-------	-------	-----

Delta Counts Per Sec: 821.0	CPS/API = 1.688
-----------------------------	-----------------

COMPANY	CAERUS OIL & GAS
WELL	PUCKETT 21D-26
FIELD	GRAND VALLEY
PROVINCE/COUNTY	GARFIELD
COUNTRY/STATE	USA / COLORADO

Elevation Kelly Bushing	8426	feet	Bottom Log Interval	8930.00	feet
Elevation Drill Floor	8426	feet	Depth Driller	8993.00	feet
Elevation Ground Level	8396	feet	Depth Logger	8930.00	feet



Weatherford®

RAPTOR NVISION LOG