

NOBLE ENERGY INC.

Cache USX AA05-17
SENE 5-6N-63W
1,326' FNL & 1,167' FEL
WELD COUNTY, CO

Wattenberg
CURRENT WELLBORE SCHEMATIC
with PROPOSED P&A
3/21/2017

API: 05-123-24587
COGCC #

GL Elev: 4,720
KB Elev: 4,734

Spud Date: 3/21/2007

Surface Casing :

8-5/8", 24#, @ 703'
Cement: 500 sx
TOC: Surface

WW	620	820
SC	703	903
FH	432	632

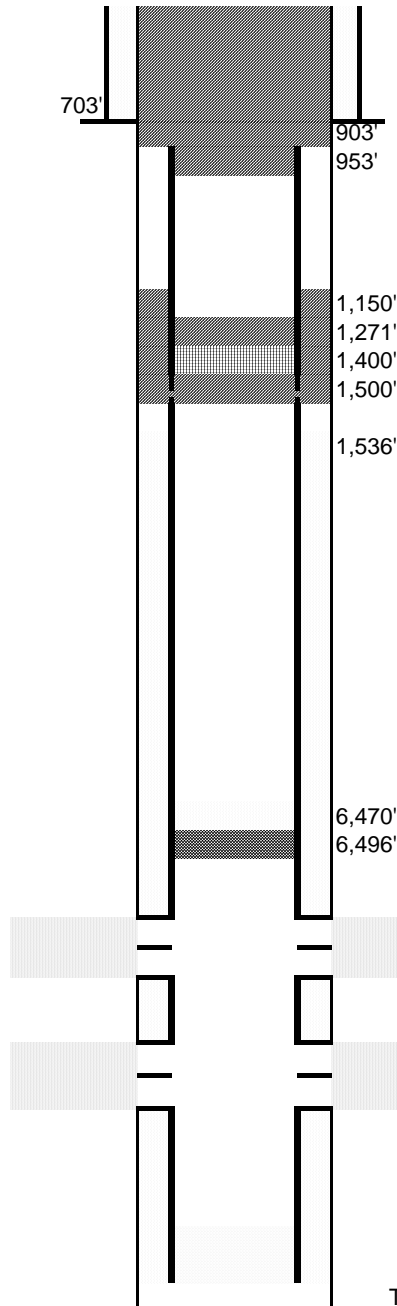
No Sussex completions within 1 mile

TOC @ 1,536'

Nio Top 6,544'

Production Casing :

4-1/2", 11.60#, M-80 @ 6,974'
Cement: 880 sx
TD: 3/24/2007



Cut surface casing off 6'-8' below surface.

Cut production casing at 903'
Cmt to surface with 390 sx @ 953'

Annular cement @ 1,150'
Cement above CICR @ 1,271'
Set CICR @ 1,400'
Pump 145 sx through CICR and 10 sx on top
Perforate 4-1/2" casing @ 1,500'

CIBP @ 6,496' w/ 2 sx cement on top
TOC above CIBP @ 6,470'

Niobrara Perforations: 6,546' - 6,674'

Codell Perforations: 6,832' - 6,842'

TD: 6,991