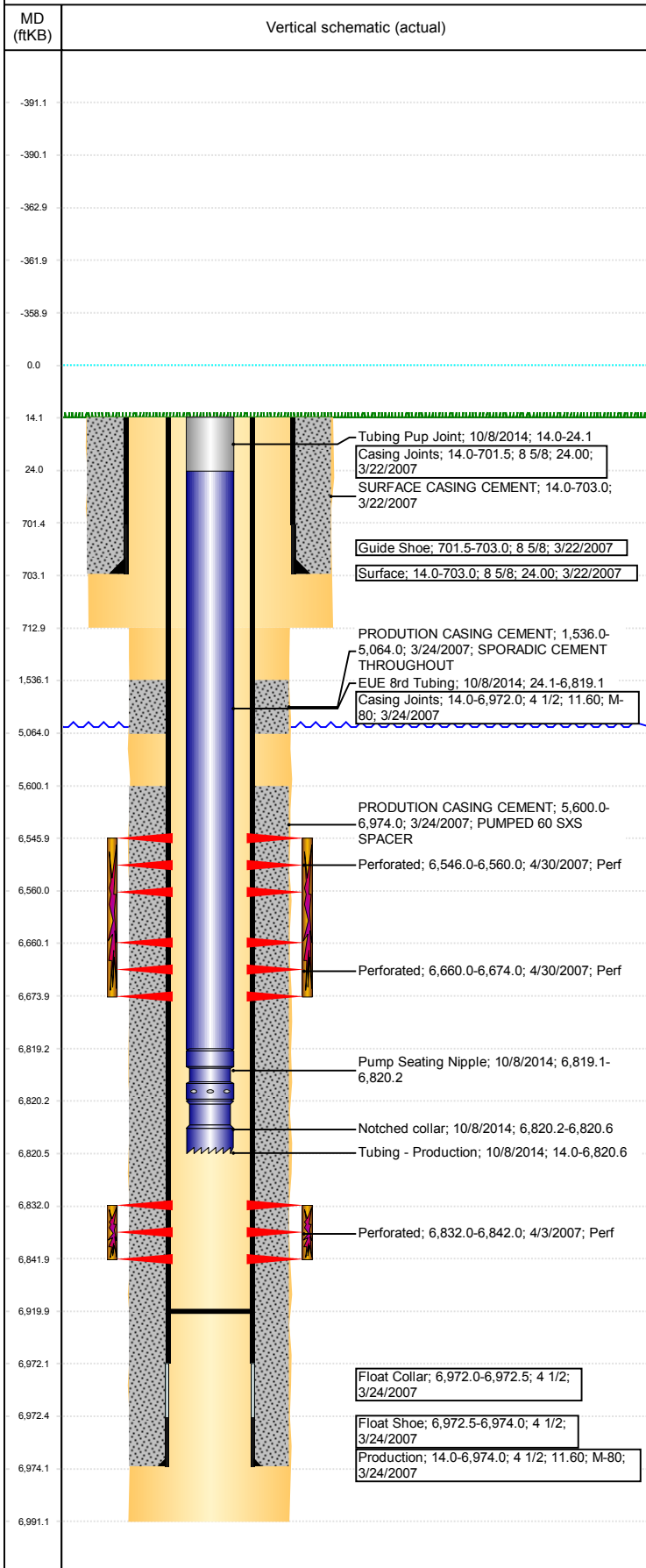


Operations Wellbore Schematic Report

Well Name: CACHE USX AA05-17

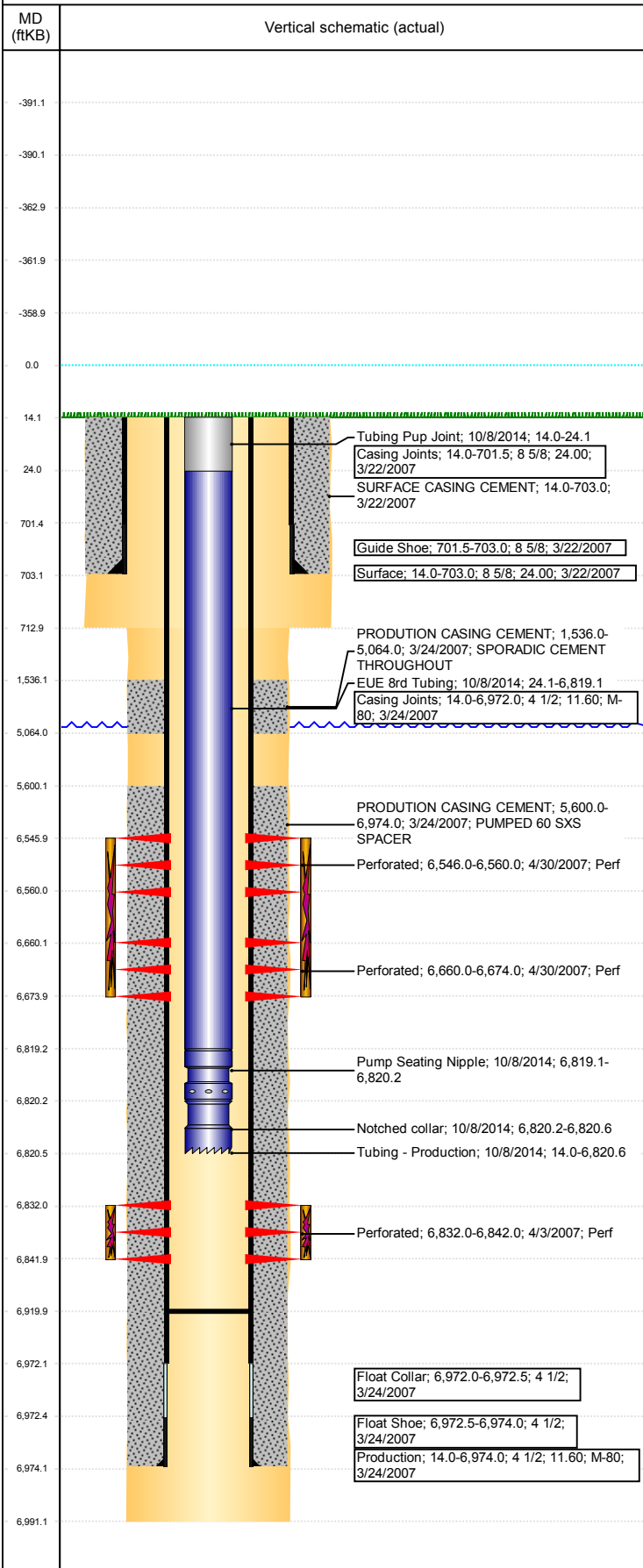
VERTICAL - ORIGINAL HOLE, 6/1/2017 11:54:27 AM



Well Header							
API 05-123-24587		Business Unit DJ BASIN		District 15	Well Config VERTICAL		
Original KB Elevation (ft) 4,734		KB - GL / MSL (ftKB) 14.00		Spud Date 3/21/2007		P & A Date	
Comment DISCREPANCIES: DR RPT TD DATE 3/25/2006; ST RPT TD 3/24/2006; CSG TALLY DATE 3/24/2006. DR RPT TD 6991'; ST RPT TD 6992'							
Directions To Well WCR 74 AND 65 E .1 S .6 W .25 N .4 W INTO							
Current PBTD (mKB) ORIGINAL HOLE - 6,920.0							
Surface Location (Congressional)							
Quarter 3 SE		Quarter 4 NE	Section 5	Township 6	Twnshp N/S Dir N	Range 63	
						Range E/W Dir W	
Bottom Hole Location							
North-South Distance (ft)		From N or S Line		East-West Distance (ft)		From E or W Line	
Plug Back Total Depths							
Date	Depth (ftKB)	Method		Com			
3/24/2007	6,958.0	CASING TALLY		FLOAT COLLAR ON CASING TALLY			
4/2/2007	6,940.0	CASED HOLE LOG		DEPTH LOGGER ON CBL			
5/7/2007	6,956.0	TAG		DRILL/CIRCULATE THROUGH PLUG AND CONTIN...			
6/26/2014	6,920.0	TBG TAG					
10/8/2014	6,920.0	TAG		SHOVE CBP TO BOTTOM TAG W/224 JTS			
Wellbore Sections							
Section Des		Size (in)		Act Top, MD (ftKB)		Act Btm, MD (ftKB)	
SURFACE		12 1/4		14		713	
PRODUCTION		7 7/8		713		6,991	
Zone Statuses							
Zone Name	Status Date	Status	Fluid Type	Job		Prod Method	
CODELL	5/15/2007	PR	Water	DRILLING/COMPLETION - ORIGINAL, 3/21/2006...		Flowing	
CODELL	2/12/2010	PR					
CODELL	10/8/2014	PR		HORIZONTAL WELL PREP, 6/26/2014 13:00			
NIOBRARA	5/15/2007	PR	Water	DRILLING/COMPLETION - ORIGINAL, 3/21/2006...		Flowing	
NIOBRARA	2/12/2010	PR					
NIOBRARA	10/8/2014	PR		HORIZONTAL WELL PREP, 6/26/2014 13:00			
NIOBRARA	3/10/2017	SI					
Casing Strings							
Csg Des		Run Date	OD (in)	Wt/Len (lb/ft)	Grade	Top, MD (ftKB)	
Surface		3/22/2007	8 5/8	24.00		14.0	
Production		3/24/2007	4 1/2	11.60	M-80	14.0	
Cement							
Des				Top (ftKB)		Btm (ftKB)	
SURFACE CASING CEMENT				14.0		703.0	
PRODUCTION CASING CEMENT				1,536.0		5,064.0	
PRODUCTION CASING CEMENT				5,600.0		6,974.0	
Tubing Components							
Item Des		OD (in)	Wt (lb/ft)	Grade	Jts	Len (ft)	
Tubing Pup Joint		2 3/8	4.70	J-55	1	10.10	
EUE 8rd Tubing		2 3/8	4.70	J-55	220	6,794.99	
Pump Seating Nipple		2 3/8			1	1.10	
Notched collar		2 3/8			1	0.40	
Perforation Data							
Linked Zone		Bnch/Stg	Sum of Entered Shot Total	Top (ftKB)		Btm (ftKB)	
NIOBRARA, ORIGINAL HOLE		A	56	6,546.00		6,560.00	
NIOBRARA, ORIGINAL HOLE		B	56	6,660.00		6,674.00	
CODELL, ORIGINAL HOLE			40	6,832.00		6,842.00	
Total (Sum)			152				
Other In Hole							
Run Date		Des		OD (in)	Top (ftKB)	Btm (ftKB)	
7/1/2014							
Logs							
Date		Type			Top, MD (ftKB)	Btm, MD (ftKB)	
3/24/2007		COMPENSATED DENSITY			2,750.0	6,965.0	

Well Name: CACHE USX AA05-17

VERTICAL - ORIGINAL HOLE, 6/1/2017 11:54:27 AM



Logs			
Date	Type	Top, MD (ftKB)	Btm, MD (ftKB)
3/24/2007	INDUCTION	693.0	6,985.0
4/2/2007	CBL/CCL/GR	1,426.0	6,940.0
Stimulation Intervals			
Bnch/Stg	Start Date	Primary Job Type	
	4/30/2007	DRILLING/COMPLETION - ORIGINAL	
Comment			
Volume Slurry Total (gal)			
171,276.00			
Treat Pressure Avg (psi)	Treat Pressure Max (psi)	Slurry Rate Avg (bbl/min)	Slurry Rate Max (bbl/min)
4,510.0	4,695.0	61.1	62.3
Bnch/Stg	Start Date	Primary Job Type	
	4/30/2007	DRILLING/COMPLETION - ORIGINAL	
Comment			
Volume Slurry Total (gal)			
127,680.00			
Treat Pressure Avg (psi)	Treat Pressure Max (psi)	Slurry Rate Avg (bbl/min)	Slurry Rate Max (bbl/min)
3,210.0	3,770.0	22.2	23.4