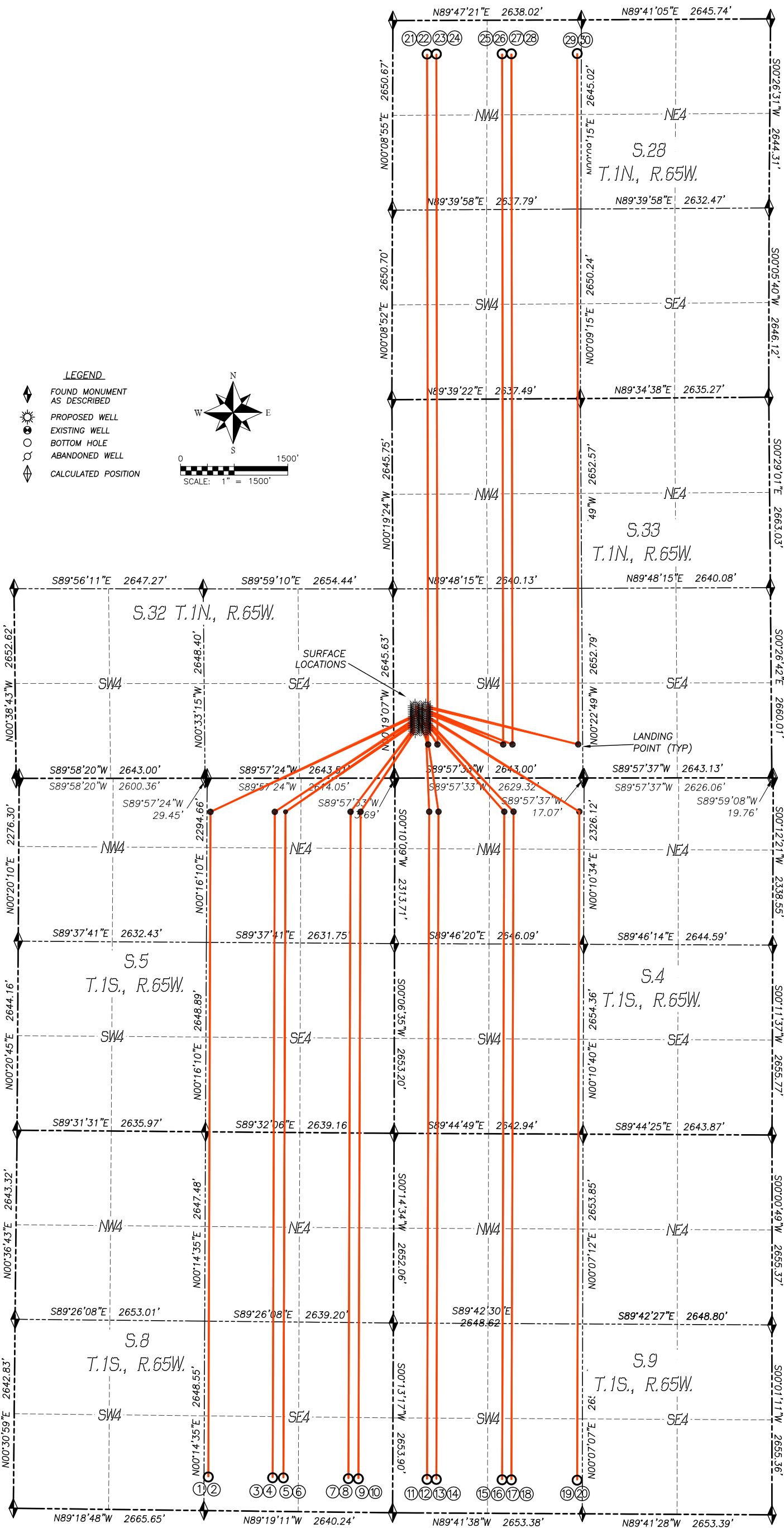


DALEY LAND SURVEYING, INC. PARKER, CO. 80134 303 953 9841

MULTI WELL PLAN

FREEDOM WELL PAD

SECTION 33, TOWNSHIP 1 NORTH, RANGE 65 WEST OF THE 6TH P.M.



MULTI WELL PLAN

FREEDOM WELL PAD

SECTION 33, TOWNSHIP 1 NORTH, RANGE 65 WEST OF THE 6TH P.M.

| Bottom Hole Location | | | | | | |
|----------------------|--------------|------------|-------------|----------|-----------|-----------------|
| No. | Well Name | Latitude | Longitude | Footage | | BH Location STR |
| 1 | Walla 5-5-3L | N39.97372° | W104.68766° | 470' FSL | 2580' FEL | 8-1S-65W |
| 2 | Walla 5-5-1L | N39.97372° | W104.68766° | 470' FSL | 2580' FEL | 8-1S-65W |
| 3 | Walla 5-4-4L | N39.97369° | W104.68445° | 470' FSL | 1680' FEL | 8-1S-65W |
| 4 | Walla 5-4-2L | N39.97369° | W104.68445° | 470' FSL | 1680' FEL | 8-1S-65W |
| 5 | Walla 5-3-3L | N39.97368° | W104.68392° | 470' FSL | 1530' FEL | 8-1S-65W |
| 6 | Walla 5-3-1L | N39.97368° | W104.68392° | 470' FSL | 1530' FEL | 8-1S-65W |
| 7 | Walla 5-2-4L | N39.97365° | W104.68067° | 470' FSL | 620' FEL | 8-1S-65W |
| 8 | Walla 5-2-2L | N39.97365° | W104.68067° | 470' FSL | 620' FEL | 8-1S-65W |
| 9 | Walla 5-1-3L | N39.97365° | W104.68017° | 470' FSL | 480' FEL | 8-1S-65W |
| 10 | Walla 5-1-1L | N39.97365° | W104.68017° | 470' FSL | 480' FEL | 8-1S-65W |

| | | | | | | |
|----|---------------|------------|-------------|----------|-----------|----------|
| 11 | Desha 4-10-2L | N39.97363° | W104.67675° | 470' FSL | 480' FWL | 9-1S-65W |
| 12 | Desha 4-10-4L | N39.97363° | W104.67675° | 470' FSL | 480' FWL | 9-1S-65W |
| 13 | Desha 4-9-1L | N39.97362° | W104.67628° | 470' FSL | 610' FWL | 9-1S-65W |
| 14 | Desha 4-9-3L | N39.97362° | W104.67628° | 470' FSL | 610' FWL | 9-1S-65W |
| 15 | Desha 4-8-2L | N39.97361° | W104.67300° | 470' FSL | 1530' FWL | 9-1S-65W |
| 16 | Desha 4-8-4L | N39.97361° | W104.67300° | 470' FSL | 1530' FWL | 9-1S-65W |
| 17 | Desha 4-7-1L | N39.97361° | W104.67254° | 470' FSL | 1660' FWL | 9-1S-65W |
| 18 | Desha 4-7-3L | N39.97361° | W104.67254° | 470' FSL | 1660' FWL | 9-1S-65W |
| 19 | Desha 4-6-2L | N39.97359° | W104.66926° | 470' FSL | 2580' FWL | 9-1S-65W |
| 20 | Desha 4-6-4L | N39.97359° | W104.66926° | 470' FSL | 2580' FWL | 9-1S-65W |

| | | | | | | |
|----|-----------------|------------|-------------|----------|-----------|-----------|
| 21 | Buford 33-10-2L | N40.02832° | W104.67674° | 470' FNL | 480' FWL | 28-1N-65W |
| 22 | Buford 33-10-4L | N40.02832° | W104.67674° | 470' FNL | 480' FWL | 28-1N-65W |
| 23 | Buford 33-9-1L | N40.02832° | W104.67628° | 470' FNL | 610' FWL | 28-1N-65W |
| 24 | Buford 33-9-3L | N40.02832° | W104.67628° | 470' FNL | 610' FWL | 28-1N-65W |
| 25 | Buford 33-8-2L | N40.02833° | W104.67300° | 470' FNL | 1530' FWL | 28-1N-65W |
| 26 | Buford 33-8-4L | N40.02833° | W104.67300° | 470' FNL | 1530' FWL | 28-1N-65W |
| 27 | Buford 33-7-1L | N40.02833° | W104.67253° | 470' FNL | 1660' FWL | 28-1N-65W |
| 28 | Buford 33-7-3L | N40.02833° | W104.67253° | 470' FNL | 1660' FWL | 28-1N-65W |
| 29 | Buford 33-6-2L | N40.02834° | W104.66925° | 470' FNL | 2580' FWL | 28-1N-65W |
| 30 | Buford 33-6-4L | N40.02834° | W104.66925° | 470' FNL | 2580' FWL | 28-1N-65W |