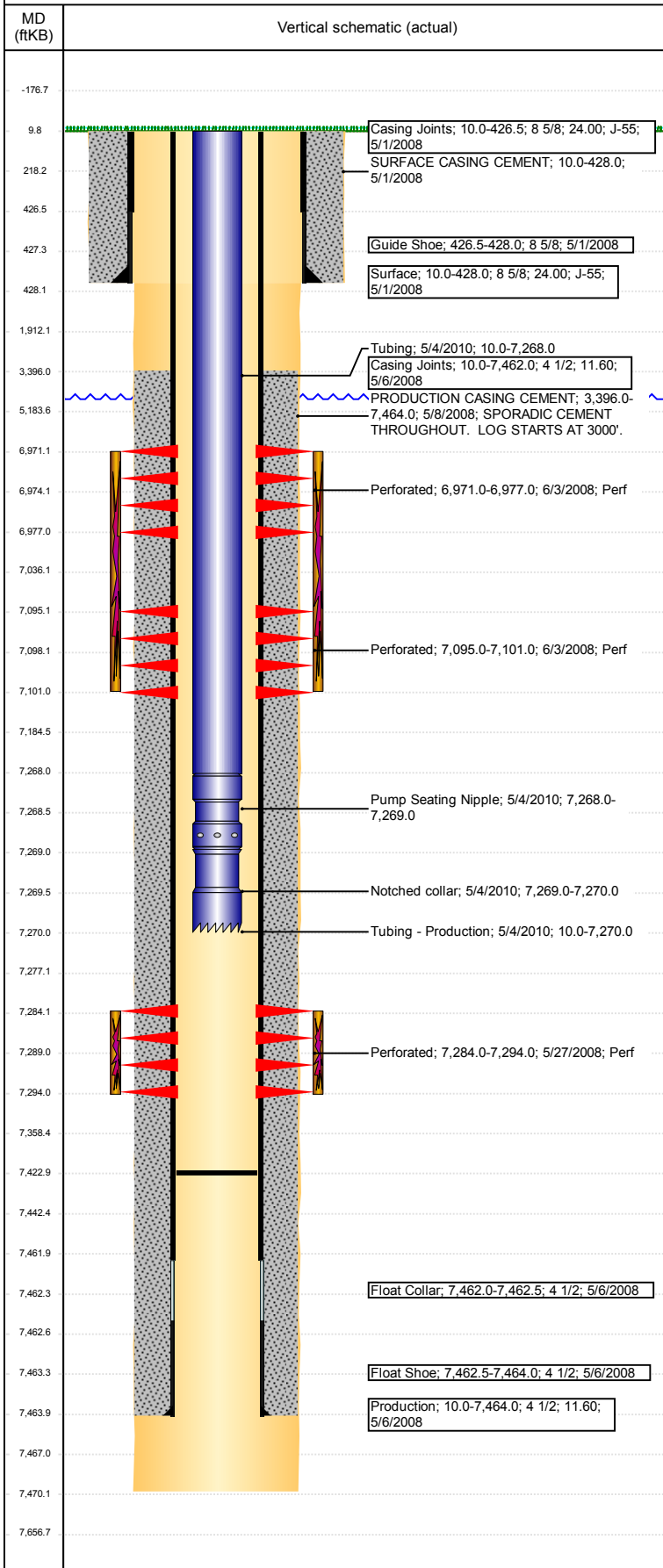


Well Name: CAMENISCH-SUPREME CAMP 05-03B

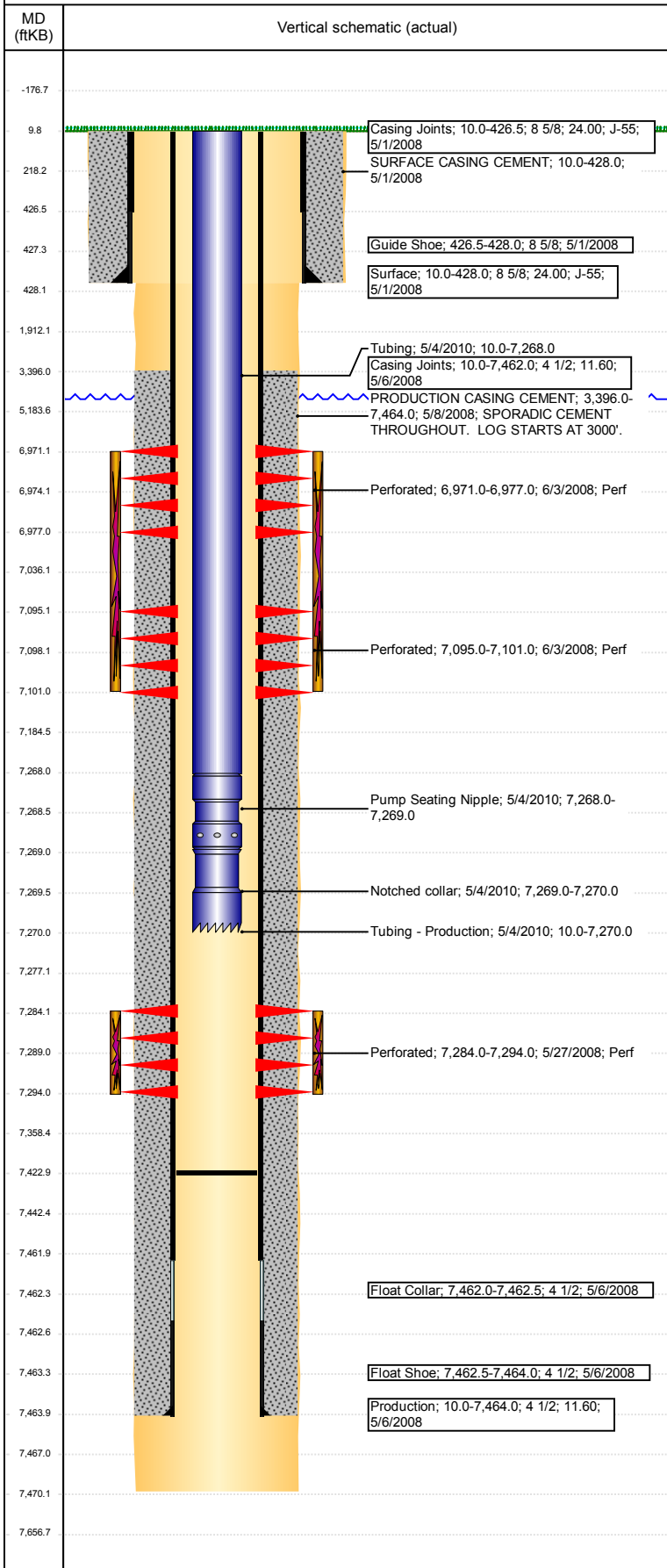
DEVIATED - ORIGINAL HOLE, 5/31/2017 11:05:30 AM



Well Header								
API 05-123-26637	Business Unit DJ BASIN		District 15	Well Config DEVIATED				
Original KB Elevation (ft) 4,694	KB - GL / MSL (ftKB) 10.00		Spud Date 5/1/2008		P & A Date			
Comment								
Directions To Well								
Congressional Location								
Quarter 3 SW	Quarter 4 NW	Section 3	Township 4	Twntshp N/S Dir N	Range 66	Range E/W Dir W		
Bottom Hole Location								
North-South Distance (ft) 2,686.0		From N or S Line NORTH		East-West Distance (ft) 1,050.0		From E or W Line WEST		
Plug Back Total Depths								
Date	Depth (ftKB)	Method		Com				
5/6/2008	7,441.0	CASED HOLE LOG TAG		FLOAT COLLAR ON CASING TALLY				
5/27/2008	7,374.0			DEPTH LOGGER ON CBL				
5/4/2010	7,423.0			CLEANOUT				
Wellbore Sections								
Section Des		Size (in)		Act Top, MD (ftKB)		Act Btm, MD (ftKB)		
SURFACE		12 1/4		10		428		
PRODUCTION		7 7/8		428		7,470		
Zone Statuses								
Zone Name	Status Date	Status	Fluid Type	Job	Prod Method			
CODELL	6/3/2008	PR	Water	DRILLING/CO...	Flowing			
CODELL	7/18/2011	PR						
CODELL	3/27/2017	PR						
NIOBRARA	7/18/2011	PR	Water		Flowing			
Casing Strings								
Surface, 428.0ftKB								
Casing Description Surface		Run Date 5/1/2008	OD (in) 8 5/8	Wt/Len (l...) 24.00	Grade J-55	Top, MD (ft...) 10.0	MD (ftKB) 428.0	
Production, 7,464.0ftKB								
Casing Description Production		Run Date 5/6/2008	OD (in) 4 1/2	Wt/Len (l...) 11.60	Grade	Top, MD (ft...) 10.0	MD (ftKB) 7,464.0	
Cement								
Description SURFACE CASING CEMENT				Top Depth (ftKB) 10.0		Bottom Depth (ftKB) 428.0		
Description PRODUCTION CASING CEMENT				Top Depth (ftKB) 3,396.0		Bottom Depth (ftKB) 7,464.0		
Tubing Strings								
Tubing Description Tubing - Production		Run Date 5/4/2010	String... 2 3/8	ID (in) 2.00	Wt (lb/ft) 4.70	Grade J-55	Len (ft) 7,260.00	Set De...
Tubing Components								
Item Des		OD (in)	Wt (lb/ft)	Grade	Jts	Len (ft)	Btm (ftKB)	Btm (TVD) (ftKB)
Tubing		2 3/8	4.70	J-55	233	7,258.00	7,268.0	
Pump Seating Nipple		2 3/8	1.10			1.00	7,269.0	
Notched collar		2 3/8				1.00	7,270.0	
Other In Hole								
Run Date		Des			OD (in)	Top (ftKB)	Btm (ftKB)	
Logs								
Date		Type				Top, MD (ftKB)	Btm, MD (ftKB)	
5/7/2008		TRIPLE COMBO				413.0	7,468.0	
5/27/2008		CEMENT BOND				3,000.0	7,374.0	
Perforation Data								
Linked Zone		Bnch/St g	Sum of Entered Shot Total	Top (ftKB)		Btm (ftKB)		Date
NIOBRARA, ORIGINAL HOLE		A	36	6,971.00		6,977.00		6/3/2008
NIOBRARA, ORIGINAL HOLE		B	36	7,095.00		7,101.00		6/3/2008
CODELL, ORIGINAL HOLE			40	7,284.00		7,294.00		5/27/2008
Total (Sum)			112					

Well Name: CAMENISCH-SUPREME CAMP 05-03B

DEVIATED - ORIGINAL HOLE, 5/31/2017 11:05:30 AM



Stimulation Intervals

Start Date 6/3/2008	Primary Job Type DRILLING/COMPLETION - ORIGINAL	
Technical Result	Tech Result Details	Tech Result Note
Comment		
Start Date 6/3/2008	Primary Job Type DRILLING/COMPLETION - ORIGINAL	
Technical Result	Tech Result Details	Tech Result Note
Comment		