

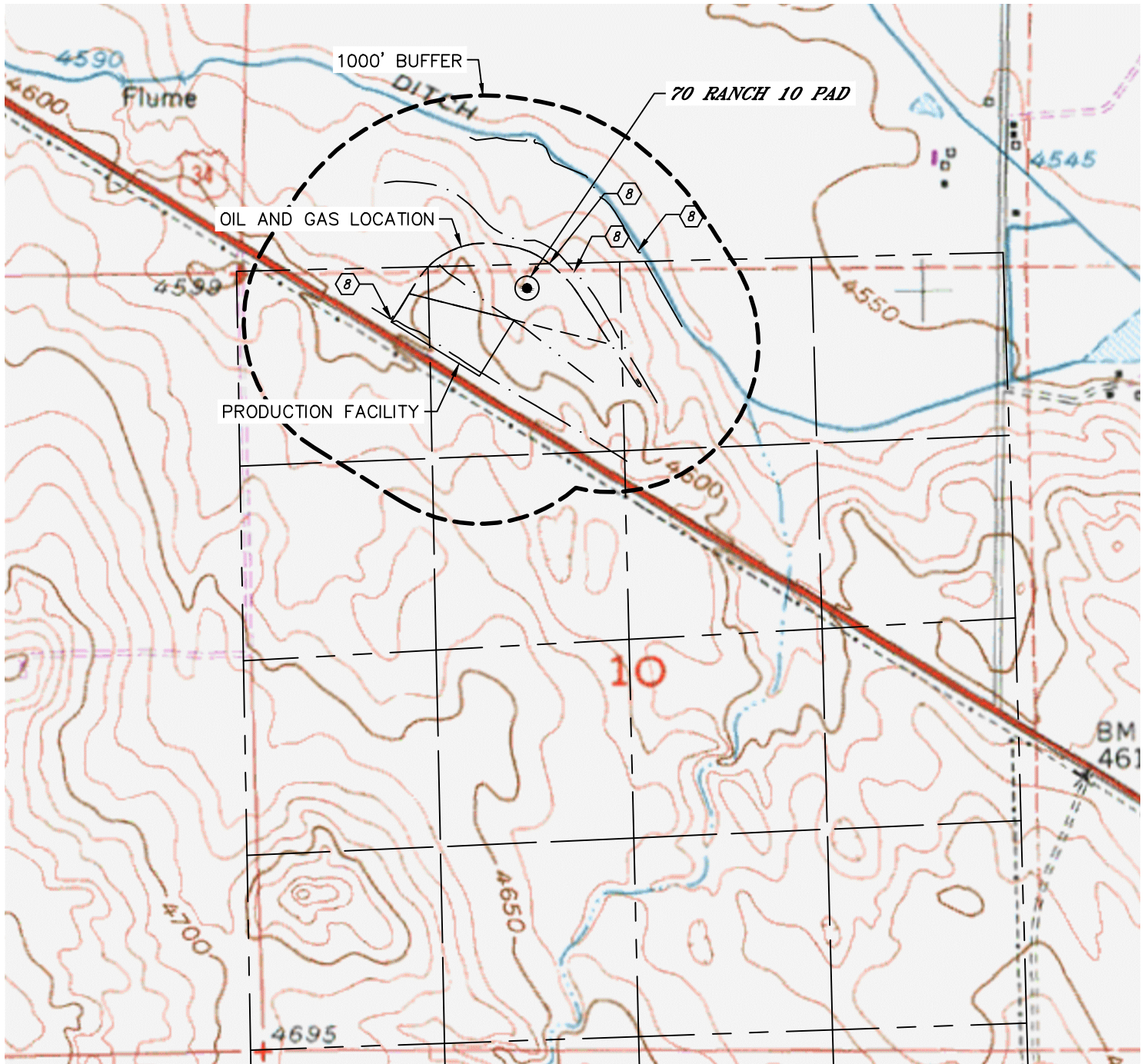


Lat40°, Inc. 6250 W. 10th Street, Unit 2, Greeley, CO 970-515-5294

HYDROLOGY MAP

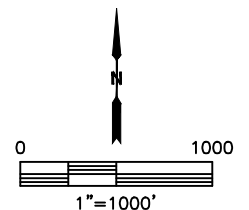
70 RANCH 10 PAD

SECTION: 10
TOWNSHIP: 4N
RANGE: 63W
6TH. P.M.
WELD COUNTY, CO



DISTANCES MEASURED FROM THE EDGE OF THE OIL AND GAS LOCATION.

- ⑧ DITCH 2', 74' & 498' NE, 12' W, 0' (INSIDE PAD)
- ⑨ LOW AREA 0' (INSIDE PAD)



DATE: 5/5/2017
PROJECT#: 2017038