

Inspection Photos

05/22/2017

Operator: PDC ENERGY INC - 69175

Location ID: 319218

Inspection Doc. Number: 682502069

Weld County, CO

Aaron Trujillo

Reclamation Specialist

COGCC



COLORADO
Oil & Gas Conservation
Commission
Department of Natural Resources

Inspection Photos
Operator: PDC ENERGY INC - 69175
Location ID: 319218



Photo 1: Photo of GPS verifying location.

Inspection Photos
Operator: PDC ENERGY INC - 69175
Location ID: 319218



Photo 2: Photo taken from the south end of the location, facing northeast. Photo shows overview of the location.



Photo 3: Photo taken from the south end of the location, facing northwest. Photo shows overview of the location.

Inspection Photos
Operator: PDC ENERGY INC - 69175
Location ID: 319218



Photo 4: Photo taken from the location. Photo shows unlabeled gas can left on location. Gas can is a (close to) full 5 gallon containing chemicals This needs to be placed into a secondary containment or removed.

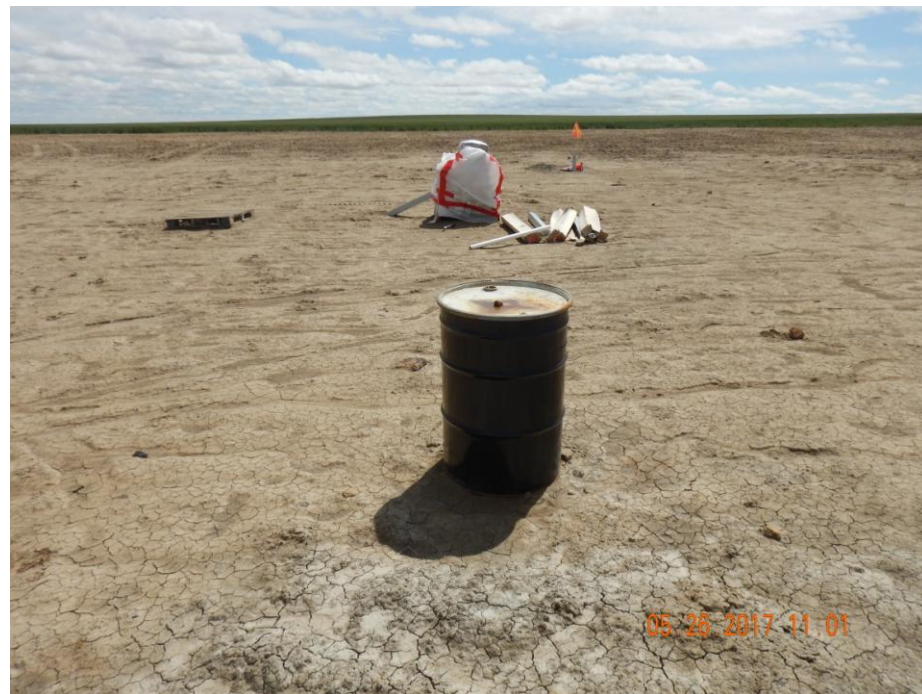


Photo 5: Photo taken from the location. Photo shows unlabeled barrel left on location. This needs to be labeled and placed into a secondary containment or removed. Photo also shows various materials left on location. Materials appear to be plastic pipe and "hole abandonment material".

Inspection Photos
Operator: PDC ENERGY INC - 69175
Location ID: 319218



Photo 6: Photo taken from the location, facing south. Photo show surface owner appears to have made efforts to plant crop on areas of the location without success. Remediation efforts appear to be in process as indicated under remediation project #8954.



Photo 7: Photo taken from the location, facing south. Photo show surface owner appears to have made efforts to plant crop on areas of the location without success. Remediation efforts appear to be in process as indicated under remediation project #8954.

Inspection Photos
Operator: PDC ENERGY INC - 69175
Location ID: 319218



Photo 8: Photo of GPS verifying location.

Inspection Photos
Operator: PDC ENERGY INC - 69175
Location ID: 319218

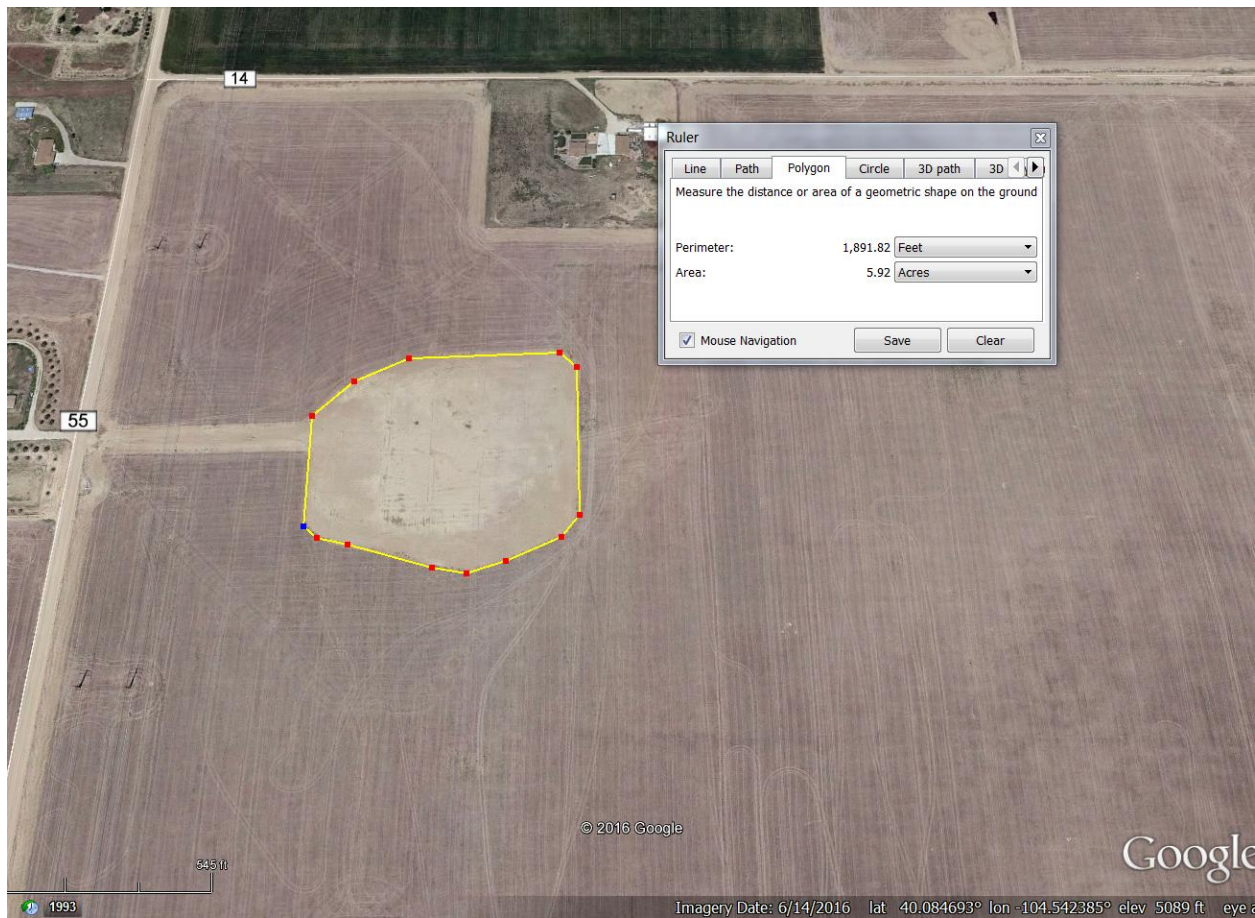


Photo 9: 2016 aerial imagery. Photo shows disturbance of the location (not including access road) is ~6 acres in size without site stabilization and erosion controls.