

Location # 336188, 2 of 6 wellheads with production facility and header in background. Picture taken from west looking east.

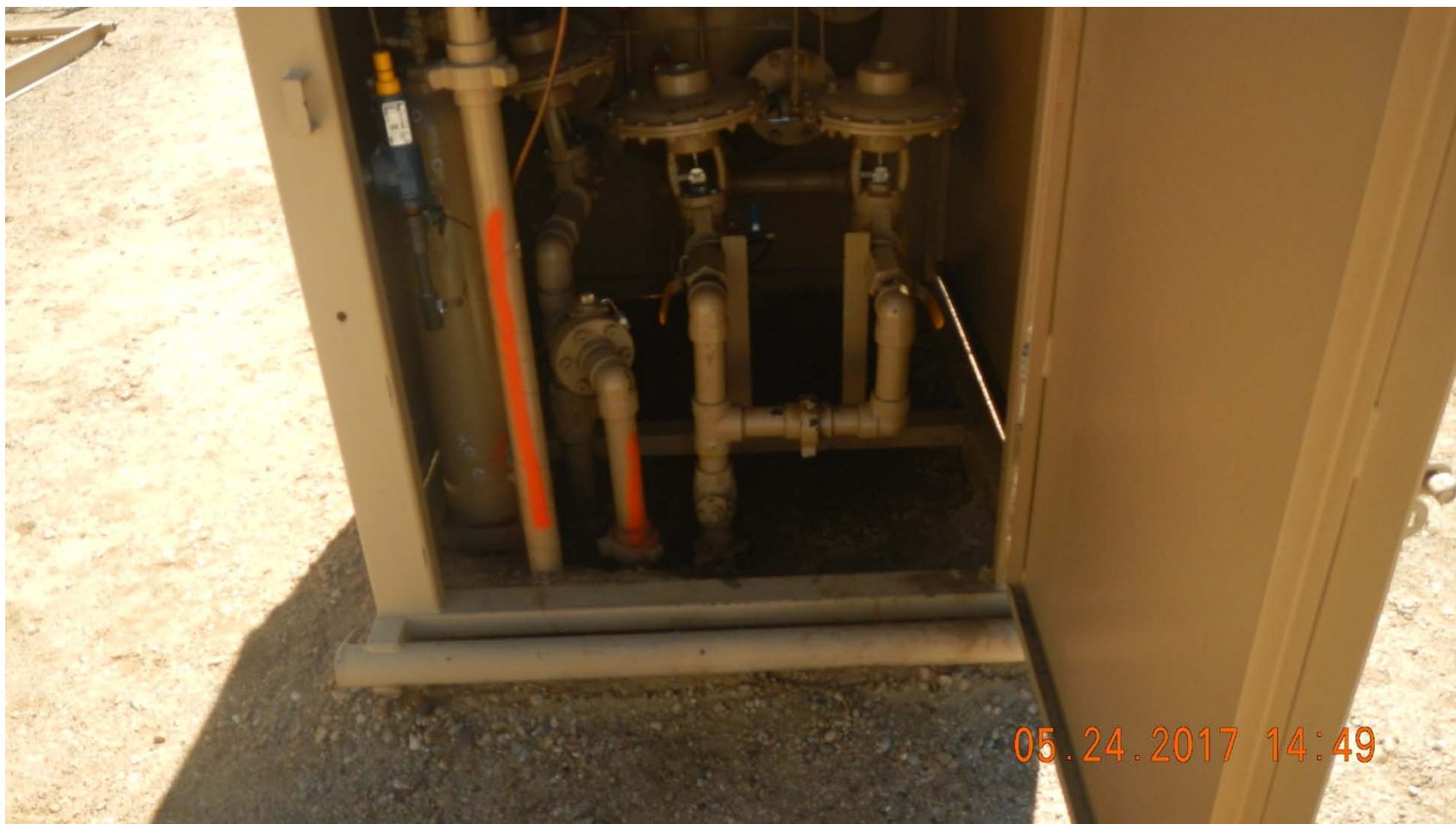


Risers at production Separator.



05.24.2017 14:49

Risers at production Separator.



Risers at Test Separator.



Risers at Gas Sales meter run.



05.24.2017 15:00

Risers at tanks.



05.24.2017 15:01

Risers at tanks.



Riser at well API # 123-09764, from east looking west.



Risers at header on production facility. Wells in background, picture taken from east looking west.

