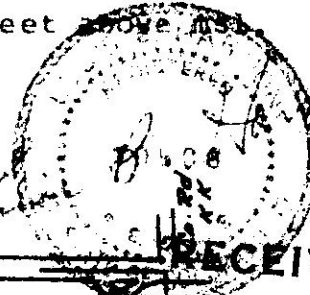




I hereby certify that the accompanying plat is an accurate representation of a correct survey showing the location of a proposed well. This location may be described as a point 1940 feet South of the North line and 660 feet East of the West line of Section 33, T4S, R43W of the 6th PM, Yuma County, Colorado.

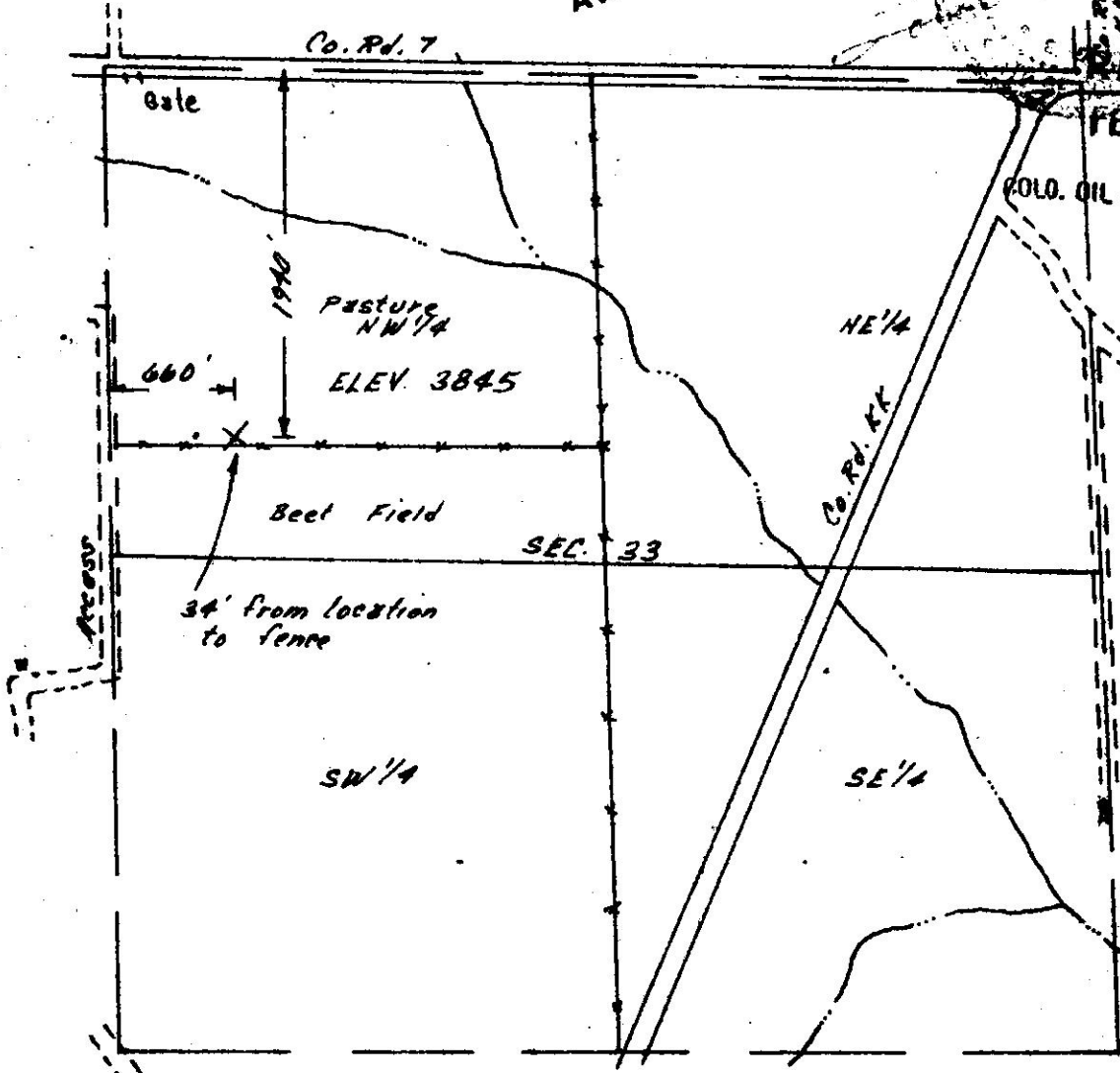
The surface elevation at this point is 3845 feet above MSL.

BEST COPY
AVAILABLE



RECEIVED
FEB 17 1982

COLORADO OIL & GAS CONSERVATION COMMISSION



X SURVEYED POINT
• REFERENCE STAKE (200' West)

**HARMON
ENGINEERING
SERVICES**

#12-33 Devlin et al
SW 1/4 NW 1/4, Section 33 T4S R43W
Lockridge et al 20 January 1982
Yuma County, Colorado
1077-34