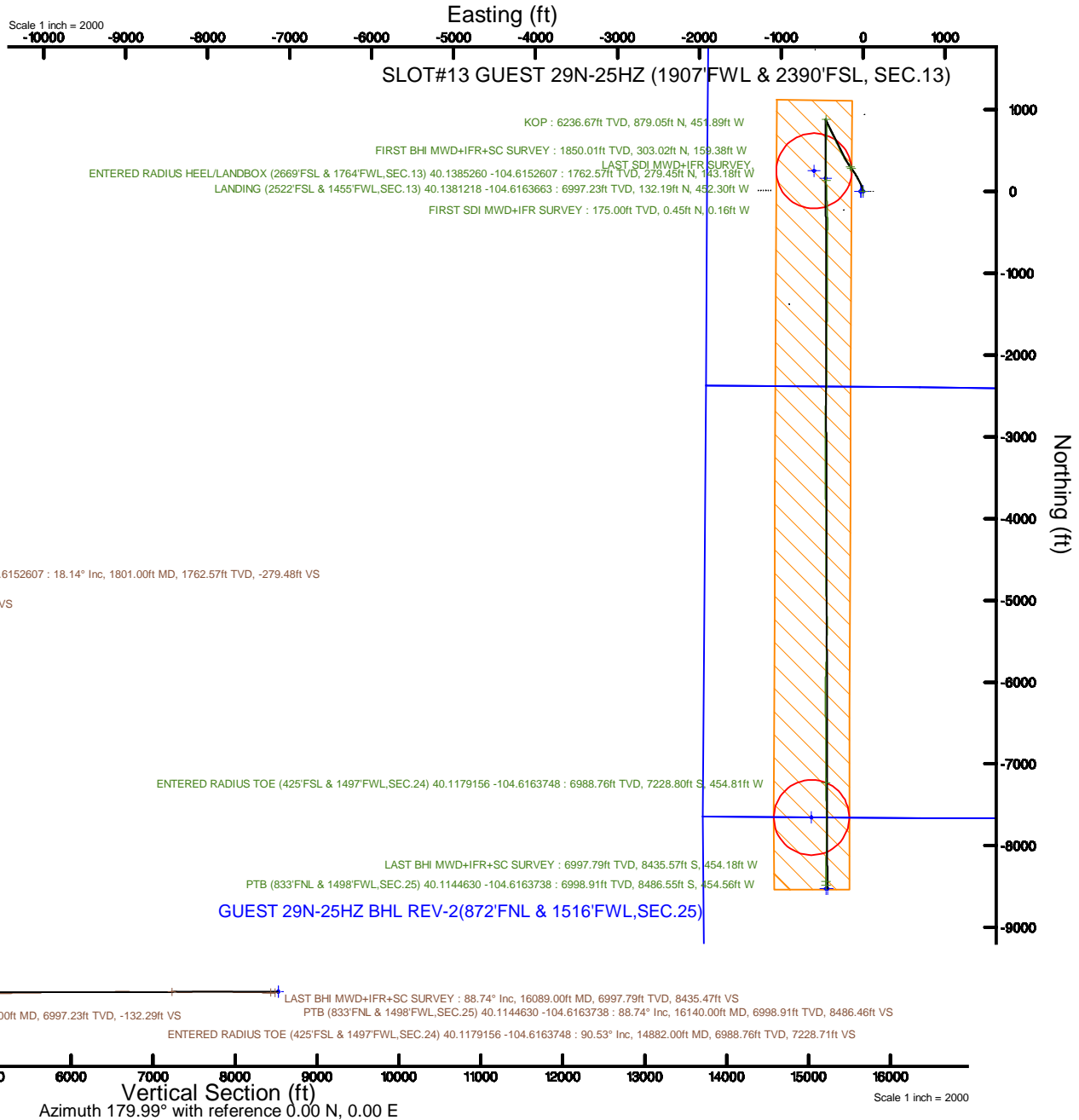


KERR-MCGEE OIL & GAS ONSHORE LP (WA)

Location: COLORADO Slot: SLOT#13 GUEST 29N-25HZ (1907'FWL & 2390'FSL, SEC.13)
 Field: WELD COUNTY (UTM/TRUE NORTH) Well: GUEST 29N-25HZ
 Facility: SEC.13-T2N-R65W Wellbore: GUEST 29N-25HZ PWB

Plot reference wellpath is GUEST 29N-25HZ Rev-C.0 PWB	Grid System: NAD83 / UTM Zone 13 North, US feet
True vertical depths are referenced to Xtreme 22 (17'RKB) (RKB)	* = Wellpath was transformed from a different geodetic datum
Measured depths are referenced to Xtreme 22 (17'RKB) (RKB)	North Reference: True north
Xtreme 22 (17'RKB) (RKB) to Mean Sea Level: 4889 feet	Scale: True distance
Mean Sea Level to Mud line (At Slot: SLOT#13 GUEST 29N-25HZ (1907'FWL & 2390'FSL, SEC.13)): 0 feet	Depths are in feet
Coordinates are in feet referenced to Slot	Created by: painsetr on 2017-03-24
	Database: WA_DEN_Anadarko_Defn



REFERENCE WELLPATH IDENTIFICATION			
Operator	KERR-MCGEE OIL & GAS ONSHORE LP (WA)	Slot	SLOT#13 GUEST 29N-25HZ (1907'FWL & 2390'FSL, SEC.13)
Area	COLORADO	Well	GUEST 29N-25HZ
Field	WELD COUNTY (UTM/TRUE NORTH)	Wellbore	GUEST 29N-25HZ AWB
Facility	SEC.13-T2N-R65W		

REPORT SETUP INFORMATION			
Projection System	NAD83 / UTM Zone 13 North, US feet	Software System	WellArchitect® 5.0
North Reference	True	User	Painsetr
Scale	0.999613	Report Generated	3/24/2017 at 8:48 AM
Convergence at slot	0.25° East	Database/Source file	WA_DEN_Anadarko_Defn/GUEST_29N-25HZ_AWP.xml

WELLPATH LOCATION						
	Local coordinates		Grid coordinates		Geographic coordinates	
	North[ft]	East[ft]	Easting[US ft]	Northing[US ft]	Latitude	Longitude
Slot Location	-2154.36	-2512.93	1748089.70	14577131.00	40°08'15.932"N	104°36'53.095"W
Facility Reference Pt			1750592.08	14579295.65	40°08'37.223"N	104°36'20.740"W
Field Reference Pt			1698235.31	14552047.82	40°04'09.600"N	104°47'36.000"W

WELLPATH DATUM			
Calculation method	Minimum curvature	Xtreme 22 (17'RKB) (RKB) to Facility Vertical Datum	4889.00ft
Horizontal Reference Pt	Slot	Xtreme 22 (17'RKB) (RKB) to Mean Sea Level	4889.00ft
Vertical Reference Pt	Xtreme 22 (17'RKB) (RKB)	Xtreme 22 (17'RKB) (RKB) to Mud Line at Slot (SLOT#13 GUEST 29N-25HZ (1907'FWL & 2390'FSL, SEC.13))	4889.00ft
MD Reference Pt	Xtreme 22 (17'RKB) (RKB)	Section Origin	N 0.00, E 0.00 ft
Field Vertical Reference	Mean Sea Level	Section Azimuth	183.07°

REFERENCE WELLPATH IDENTIFICATION			
Operator	KERR-MCGEE OIL & GAS ONSHORE LP (WA)	Slot	SLOT#13 GUEST 29N-25HZ (1907'FWL & 2390'FSL, SEC.13)
Area	COLORADO	Well	GUEST 29N-25HZ
Field	WELD COUNTY (UTM/TRUE NORTH)	Wellbore	GUEST 29N-25HZ AWB
Facility	SEC.13-T2N-R65W		

WELLPATH DATA (189 stations) † = interpolated/extrapolated station												
MD [ft]	Inclination [°]	Azimuth [°]	TVD [ft]	Vert Sect [ft]	North [ft]	East [ft]	Grid East [US ft]	Grid North [US ft]	Latitude	Longitude	DLS [°/100ft]	Comments
0.00	0.00	340.430	0.00	0.00	0.00	0.00	1748089.70	14577131.00	40°08'15.932"N	104°36'53.095"W	0.00	
17.00	0.00	340.430	17.00	0.00	0.00	0.00	1748089.70	14577131.00	40°08'15.932"N	104°36'53.095"W	0.00	
175.00	0.350	340.430	175.00	-0.45	0.45	-0.16	1748089.54	14577131.46	40°08'15.936"N	104°36'53.097"W	0.22	FIRST SDI MWD+IFR SURVEY
229.00	0.980	348.480	229.00	-1.04	1.06	-0.31	1748089.39	14577132.06	40°08'15.943"N	104°36'53.099"W	1.18	
316.00	2.330	340.040	315.96	-3.39	3.45	-1.06	1748088.62	14577134.45	40°08'15.966"N	104°36'53.109"W	1.57	
402.00	3.450	343.030	401.85	-7.43	7.57	-2.41	1748087.25	14577138.56	40°08'16.007"N	104°36'53.126"W	1.31	
487.00	4.880	339.970	486.62	-13.16	13.42	-4.40	1748085.25	14577144.39	40°08'16.065"N	104°36'53.152"W	1.70	
576.00	6.360	343.440	575.19	-21.29	21.70	-7.10	1748082.51	14577152.66	40°08'16.146"N	104°36'53.186"W	1.71	
664.00	8.240	349.040	662.47	-32.00	32.56	-9.69	1748079.87	14577163.51	40°08'16.254"N	104°36'53.220"W	2.28	
753.00	9.640	343.770	750.39	-45.22	45.98	-12.98	1748076.52	14577176.91	40°08'16.386"N	104°36'53.262"W	1.82	
841.00	11.140	338.800	836.95	-59.92	60.98	-18.12	1748071.32	14577191.88	40°08'16.535"N	104°36'53.328"W	1.98	
926.00	12.420	334.620	920.16	-75.45	76.90	-25.01	1748064.37	14577207.76	40°08'16.692"N	104°36'53.417"W	1.81	
1013.00	13.080	335.260	1005.01	-92.38	94.29	-33.14	1748056.17	14577225.11	40°08'16.864"N	104°36'53.522"W	0.78	
1102.00	13.600	332.050	1091.61	-110.26	112.68	-42.26	1748046.97	14577243.45	40°08'17.046"N	104°36'53.639"W	1.02	
1188.00	14.660	331.470	1175.01	-128.19	131.17	-52.19	1748036.96	14577261.90	40°08'17.228"N	104°36'53.767"W	1.24	
1275.00	14.770	332.800	1259.16	-147.15	150.71	-62.52	1748026.55	14577281.38	40°08'17.421"N	104°36'53.900"W	0.41	
1361.00	15.580	332.130	1342.16	-166.52	170.67	-72.93	1748016.06	14577301.29	40°08'17.619"N	104°36'54.034"W	0.96	
1450.00	16.250	329.370	1427.75	-187.14	191.95	-84.86	1748004.04	14577322.51	40°08'17.829"N	104°36'54.188"W	1.14	
1538.00	16.670	328.980	1512.14	-207.83	213.36	-97.64	1747991.18	14577343.86	40°08'18.040"N	104°36'54.352"W	0.49	
1627.00	17.810	326.330	1597.14	-229.31	235.63	-111.76	1747976.96	14577366.05	40°08'18.261"N	104°36'54.534"W	1.56	
1716.00	18.140	323.510	1681.80	-250.90	258.10	-127.55	1747961.08	14577388.44	40°08'18.483"N	104°36'54.737"W	1.05	
1801.00	18.140	324.110	1762.57	-271.40	279.45	-143.18	1747945.37	14577409.73	40°08'18.694"N	104°36'54.938"W	0.22	LAST SDI MWD+IFR SURVEY, ENTERED RADIUS HEEL/LANDBOX (2669'FSL & 1764'FWL, SEC.13) 40.138
1893.00	18.090	326.870	1850.01	-294.06	303.02	-159.38	1747929.07	14577433.21	40°08'18.926"N	104°36'55.147"W	0.93	FIRST BHI MWD+IFR+SC SURVEY
1981.00	17.270	324.900	1933.86	-315.36	325.15	-174.36	1747914.00	14577455.27	40°08'19.145"N	104°36'55.340"W	1.15	
2068.00	17.740	325.880	2016.83	-336.07	346.69	-189.22	1747899.06	14577476.73	40°08'19.358"N	104°36'55.531"W	0.64	
2155.00	17.190	324.050	2099.82	-356.62	368.07	-204.20	1747883.99	14577498.04	40°08'19.569"N	104°36'55.724"W	0.89	
2243.00	16.180	324.700	2184.11	-376.34	388.60	-218.92	1747869.18	14577518.50	40°08'19.772"N	104°36'55.914"W	1.17	
2330.00	15.270	330.560	2267.86	-395.50	408.47	-231.56	1747856.47	14577538.31	40°08'19.969"N	104°36'56.076"W	2.10	
2418.00	14.880	334.140	2352.83	-415.17	428.73	-242.18	1747845.76	14577558.52	40°08'20.169"N	104°36'56.213"W	1.15	
2505.00	14.120	332.260	2437.06	-434.06	448.18	-251.99	1747835.87	14577577.91	40°08'20.361"N	104°36'56.340"W	1.03	
2593.00	12.790	329.720	2522.65	-451.41	466.09	-261.90	1747825.88	14577595.77	40°08'20.538"N	104°36'56.467"W	1.65	
2680.00	12.910	333.940	2607.47	-467.95	483.14	-271.03	1747816.69	14577612.77	40°08'20.706"N	104°36'56.585"W	1.09	
2768.00	13.110	336.510	2693.21	-485.46	501.12	-279.32	1747808.32	14577630.71	40°08'20.884"N	104°36'56.692"W	0.70	
2855.00	13.970	338.000	2777.79	-503.80	519.91	-287.19	1747800.37	14577649.46	40°08'21.070"N	104°36'56.793"W	1.07	
2942.00	14.550	334.010	2862.11	-522.87	539.47	-295.91	1747791.57	14577668.97	40°08'21.263"N	104°36'56.905"W	1.31	
3030.00	13.800	332.390	2947.43	-541.56	558.71	-305.62	1747781.78	14577688.16	40°08'21.453"N	104°36'57.030"W	0.96	
3117.00	14.540	334.360	3031.79	-560.06	577.75	-315.16	1747772.17	14577707.15	40°08'21.641"N	104°36'57.153"W	1.02	
3205.00	13.310	332.640	3117.20	-578.49	596.70	-324.59	1747762.65	14577726.06	40°08'21.829"N	104°36'57.274"W	1.47	
3292.00	13.750	334.200	3201.79	-596.18	614.90	-333.69	1747753.47	14577744.22	40°08'22.009"N	104°36'57.392"W	0.66	
3380.00	14.510	334.230	3287.12	-614.99	634.25	-343.04	1747744.05	14577763.51	40°08'22.200"N	104°36'57.512"W	0.86	
3467.00	13.590	333.680	3371.52	-633.45	653.23	-352.31	1747734.70	14577782.44	40°08'22.387"N	104°36'57.631"W	1.07	
3555.00	13.610	333.840	3457.05	-651.49	671.79	-361.46	1747725.48	14577800.95	40°08'22.571"N	104°36'57.749"W	0.05	
3667.00	14.270	334.680	3565.75	-675.14	696.09	-373.17	1747713.66	14577825.20	40°08'22.811"N	104°36'57.900"W	0.62	
3755.00	14.790	333.130	3650.94	-694.41	715.91	-382.89	1747703.86	14577844.97	40°08'23.007"N	104°36'58.025"W	0.74	
3842.00	13.750	330.670	3735.25	-712.76	734.83	-392.97	1747693.70	14577863.84	40°08'23.194"N	104°36'58.155"W	1.38	

REFERENCE WELLPATH IDENTIFICATION			
Operator	KERR-MCGEE OIL & GAS ONSHORE LP (WA)	Slot	SLOT#13 GUEST 29N-25HZ (1907'FWL & 2390'FSL, SEC.13)
Area	COLORADO	Well	GUEST 29N-25HZ
Field	WELD COUNTY (UTM/TRUE NORTH)	Wellbore	GUEST 29N-25HZ AWB
Facility	SEC.13-T2N-R65W		

WELLPATH DATA (189 stations) † = interpolated/extrapolated station												
MD [ft]	Inclination [°]	Azimuth [°]	TVD [ft]	Vert Sect [ft]	North [ft]	East [ft]	Grid East [US ft]	Grid North [US ft]	Latitude	Longitude	DLS ["/100ft]	Comments
3930.00	14.040	334.720	3820.68	-730.99	753.60	-402.65	1747683.94	14577882.56	40°08'23.379"N	104°36'58.280"W	1.15	
4016.00	13.770	334.460	3904.16	-749.16	772.27	-411.52	1747675.00	14577901.19	40°08'23.564"N	104°36'58.394"W	0.32	
4104.00	14.910	332.670	3989.42	-768.12	791.78	-421.23	1747665.20	14577920.64	40°08'23.756"N	104°36'58.519"W	1.39	
4191.00	13.640	338.080	4073.73	-787.07	811.24	-430.20	1747656.15	14577940.06	40°08'23.949"N	104°36'58.634"W	2.12	
4279.00	11.030	336.730	4159.69	-804.02	828.60	-437.40	1747648.88	14577957.38	40°08'24.120"N	104°36'58.727"W	2.98	
4366.00	8.830	337.010	4245.38	-817.48	842.40	-443.30	1747642.93	14577971.15	40°08'24.257"N	104°36'58.803"W	2.53	
4454.00	7.460	332.910	4332.50	-828.49	853.70	-448.54	1747637.64	14577982.42	40°08'24.368"N	104°36'58.870"W	1.69	
4541.00	7.000	338.070	4418.80	-838.18	863.65	-453.09	1747633.05	14577992.35	40°08'24.467"N	104°36'58.929"W	0.91	
4629.00	5.590	340.990	4506.27	-847.01	872.68	-456.49	1747629.61	14578001.35	40°08'24.556"N	104°36'58.973"W	1.64	
4715.00	3.910	330.920	4591.98	-853.38	879.20	-459.28	1747626.79	14578007.86	40°08'24.620"N	104°36'59.009"W	2.17	
4803.00	2.100	355.800	4679.85	-857.52	883.43	-460.86	1747625.20	14578012.08	40°08'24.662"N	104°36'59.029"W	2.49	
4891.00	0.340	357.100	4767.83	-859.38	885.30	-460.99	1747625.06	14578013.95	40°08'24.681"N	104°36'59.031"W	2.00	
4978.00	1.040	2.190	4854.82	-860.42	886.35	-460.97	1747625.07	14578015.00	40°08'24.691"N	104°36'59.030"W	0.81	
5065.00	1.610	8.600	4941.80	-862.43	888.34	-460.76	1747625.28	14578017.00	40°08'24.711"N	104°36'59.028"W	0.68	
5153.00	0.830	120.180	5029.79	-863.37	889.25	-460.02	1747626.01	14578017.90	40°08'24.720"N	104°36'59.018"W	2.35	
5241.00	0.940	107.650	5117.78	-862.90	888.71	-458.78	1747627.25	14578017.37	40°08'24.714"N	104°36'59.002"W	0.25	
5328.00	0.990	88.950	5204.77	-862.77	888.50	-457.35	1747628.68	14578017.17	40°08'24.712"N	104°36'58.984"W	0.36	
5416.00	0.750	181.020	5292.76	-862.25	887.94	-456.60	1747629.43	14578016.61	40°08'24.707"N	104°36'58.974"W	1.44	
5503.00	0.590	161.060	5379.75	-861.26	886.95	-456.47	1747629.57	14578015.62	40°08'24.697"N	104°36'58.972"W	0.32	
5591.00	0.400	153.380	5467.75	-860.58	886.25	-456.18	1747629.86	14578014.92	40°08'24.690"N	104°36'58.969"W	0.23	
5678.00	0.590	106.890	5554.75	-860.21	885.84	-455.62	1747630.43	14578014.52	40°08'24.686"N	104°36'58.962"W	0.49	
5765.00	0.370	239.330	5641.74	-859.94	885.57	-455.43	1747630.62	14578014.25	40°08'24.683"N	104°36'58.959"W	1.01	
5853.00	0.140	284.030	5729.74	-859.81	885.45	-455.78	1747630.27	14578014.13	40°08'24.682"N	104°36'58.964"W	0.33	
5940.00	0.410	85.800	5816.74	-859.87	885.50	-455.57	1747630.47	14578014.18	40°08'24.683"N	104°36'58.961"W	0.63	
6028.00	1.090	141.570	5904.74	-859.28	884.87	-454.74	1747631.31	14578013.55	40°08'24.676"N	104°36'58.950"W	1.05	
6115.00	1.340	159.760	5991.72	-857.72	883.26	-453.87	1747632.18	14578011.95	40°08'24.660"N	104°36'58.939"W	0.52	
6203.00	0.980	144.030	6079.70	-856.20	881.69	-453.07	1747632.99	14578010.38	40°08'24.645"N	104°36'58.929"W	0.54	
6290.00	0.530	148.070	6166.69	-855.29	880.75	-452.42	1747633.64	14578009.44	40°08'24.636"N	104°36'58.920"W	0.52	
6380.00†	2.408	165.605	6236.67	-853.62	879.05	-451.89	1747634.19	14578007.74	40°08'24.619"N	104°36'58.913"W	2.73	KOP
6377.00	2.870	166.380	6253.65	-852.87	878.29	-451.70	1747634.38	14578006.98	40°08'24.611"N	104°36'58.911"W	2.73	
6465.00	11.840	178.810	6340.84	-841.73	867.10	-450.99	1747635.13	14577995.80	40°08'24.501"N	104°36'58.902"W	10.29	
6552.00	18.570	178.780	6424.74	-818.99	844.30	-450.51	1747635.71	14577973.01	40°08'24.275"N	104°36'58.896"W	7.74	
6640.00	23.890	175.850	6506.74	-787.32	812.49	-448.92	1747637.44	14577941.23	40°08'23.961"N	104°36'58.875"W	6.16	
6727.00	29.230	176.430	6584.53	-748.71	773.69	-446.32	1747640.21	14577902.45	40°08'23.578"N	104°36'58.842"W	6.15	
6815.00	37.950	182.630	6657.79	-700.21	725.11	-446.22	1747640.51	14577853.89	40°08'23.098"N	104°36'58.841"W	10.64	
6903.00	43.740	183.800	6724.33	-642.68	667.68	-449.48	1747637.50	14577796.47	40°08'22.530"N	104°36'58.882"W	6.64	
6990.00	48.320	181.200	6784.73	-580.10	605.15	-452.16	1747635.10	14577733.95	40°08'21.912"N	104°36'58.917"W	5.69	
7078.00	53.240	179.980	6840.35	-512.01	537.00	-452.83	1747634.72	14577665.82	40°08'21.239"N	104°36'58.926"W	5.69	
7165.00	57.660	180.050	6889.68	-440.47	465.36	-452.85	1747635.01	14577594.21	40°08'20.531"N	104°36'58.926"W	5.08	
7253.00	64.370	179.510	6932.30	-363.67	388.43	-452.55	1747635.65	14577517.31	40°08'19.770"N	104°36'58.922"W	7.64	
7340.00	72.630	180.070	6964.16	-282.92	307.55	-452.26	1747636.28	14577436.47	40°08'18.971"N	104°36'58.918"W	9.51	
7428.00	78.260	180.930	6986.26	-197.87	222.41	-453.01	1747635.90	14577351.37	40°08'18.130"N	104°36'58.928"W	6.47	
7515.00	87.480	178.310	6997.05	-111.80	136.19	-452.42	1747636.87	14577265.18	40°08'17.278"N	104°36'58.920"W	11.01	
7519.00†	87.533	178.295	6997.23	-107.81	132.19	-452.30	1747637.00	14577261.19	40°08'17.238"N	104°36'58.919"W	1.38	LANDING (2522'FSL & 1455'FWL, SEC.13) 40.1381218 -104.6163663
7603.00	88.650	177.980	7000.02	-24.17	48.29	-449.57	1747640.09	14577177.32	40°08'16.409"N	104°36'58.884"W	1.38	

REFERENCE WELLPATH IDENTIFICATION			
Operator	KERR-MCGEE OIL & GAS ONSHORE LP (WA)	Slot	SLOT#13 GUEST 29N-25HZ (1907'FWL & 2390'FSL, SEC.13)
Area	COLORADO	Well	GUEST 29N-25HZ
Field	WELD COUNTY (UTM/TRUE NORTH)	Wellbore	GUEST 29N-25HZ AWB
Facility	SEC.13-T2N-R65W		

WELLPATH DATA (189 stations)												
MD [ft]	Inclination [°]	Azimuth [°]	TVD [ft]	Vert Sect [ft]	North [ft]	East [ft]	Grid East [US ft]	Grid North [US ft]	Latitude	Longitude	DLS [°/100ft]	Comments
7690.00	88.980	178.310	7001.82	62.49	-38.65	-446.76	1747643.29	14577090.43	40°08'15.550"N	104°36'58.847"W	0.54	
7778.00	89.690	177.890	7002.84	150.15	-126.59	-443.84	1747646.58	14577002.54	40°08'14.681"N	104°36'58.810"W	0.94	
7866.00	87.690	178.450	7004.86	237.80	-214.52	-441.03	1747649.77	14576914.66	40°08'13.812"N	104°36'58.773"W	2.36	
7953.00	87.290	177.860	7008.67	324.40	-301.39	-438.23	1747652.95	14576827.83	40°08'12.954"N	104°36'58.737"W	0.82	
8041.00	88.430	180.230	7011.95	412.11	-389.31	-436.77	1747654.79	14576739.96	40°08'12.085"N	104°36'58.719"W	2.99	
8128.00	88.950	180.980	7013.94	499.01	-476.28	-437.69	1747654.25	14576653.01	40°08'11.225"N	104°36'58.730"W	1.05	
8216.00	90.950	180.360	7014.02	586.93	-564.27	-438.72	1747653.60	14576565.06	40°08'10.356"N	104°36'58.744"W	2.38	
8303.00	90.580	180.990	7012.86	673.84	-651.26	-439.74	1747652.96	14576478.10	40°08'09.496"N	104°36'58.757"W	0.84	
8390.00	90.830	180.260	7011.79	760.76	-738.24	-440.69	1747652.38	14576391.14	40°08'08.637"N	104°36'58.769"W	0.89	
8478.00	91.720	179.520	7009.83	848.60	-826.22	-440.52	1747652.93	14576303.20	40°08'07.767"N	104°36'58.767"W	1.32	
8565.00	90.460	181.200	7008.17	935.48	-913.20	-441.07	1747652.76	14576216.26	40°08'06.908"N	104°36'58.774"W	2.41	
8653.00	90.400	180.110	7007.51	1023.40	-1001.19	-442.07	1747652.14	14576128.30	40°08'06.038"N	104°36'58.787"W	1.24	
8740.00	90.180	179.230	7007.07	1110.25	-1088.18	-441.57	1747653.02	14576041.34	40°08'05.178"N	104°36'58.780"W	1.04	
8827.00	91.600	179.750	7005.72	1197.06	-1175.17	-440.80	1747654.17	14575954.39	40°08'04.319"N	104°36'58.770"W	1.74	
8915.00	90.150	180.270	7004.38	1284.92	-1263.16	-440.81	1747654.53	14575866.44	40°08'03.449"N	104°36'58.770"W	1.75	
9002.00	89.290	181.280	7004.80	1371.85	-1350.14	-441.99	1747653.73	14575779.48	40°08'02.590"N	104°36'58.786"W	1.52	
9090.00	88.520	180.440	7006.48	1459.77	-1438.12	-443.31	1747652.80	14575691.54	40°08'01.720"N	104°36'58.803"W	1.29	
9177.00	88.920	179.850	7008.43	1546.63	-1525.09	-443.53	1747652.95	14575604.59	40°08'00.861"N	104°36'58.805"W	0.82	
9265.00	90.400	181.820	7008.95	1634.56	-1613.08	-444.81	1747652.05	14575516.64	40°07'59.991"N	104°36'58.822"W	2.80	
9352.00	90.980	181.380	7007.90	1721.52	-1700.04	-447.24	1747650.00	14575429.71	40°07'59.132"N	104°36'58.853"W	0.84	
9440.00	90.310	180.020	7006.91	1809.44	-1788.02	-448.32	1747649.31	14575341.75	40°07'58.263"N	104°36'58.867"W	1.72	
9527.00	89.540	180.780	7007.03	1896.35	-1875.02	-448.93	1747649.08	14575254.79	40°07'57.403"N	104°36'58.875"W	1.24	
9615.00	89.380	179.770	7007.86	1984.24	-1963.01	-449.35	1747649.04	14575166.83	40°07'56.533"N	104°36'58.880"W	1.16	
9702.00	88.920	179.200	7009.15	2071.06	-2050.00	-448.57	1747650.19	14575079.88	40°07'55.674"N	104°36'58.870"W	0.84	
9790.00	90.310	179.300	7009.74	2158.86	-2137.99	-447.41	1747651.73	14574991.93	40°07'54.804"N	104°36'58.855"W	1.58	
9877.00	90.650	180.850	7009.01	2245.73	-2224.98	-447.53	1747651.99	14574904.97	40°07'53.944"N	104°36'58.857"W	1.82	
9965.00	91.450	180.940	7007.40	2333.65	-2312.95	-448.90	1747651.00	14574817.02	40°07'53.075"N	104°36'58.874"W	0.91	
10053.00	90.740	181.500	7005.71	2421.59	-2400.92	-450.78	1747649.51	14574729.09	40°07'52.206"N	104°36'58.898"W	1.03	
10140.00	89.780	181.840	7005.32	2508.56	-2487.88	-453.31	1747647.35	14574642.15	40°07'51.347"N	104°36'58.931"W	1.17	
10228.00	90.610	181.880	7005.02	2596.54	-2575.83	-456.17	1747644.87	14574554.22	40°07'50.477"N	104°36'58.968"W	0.94	
10316.00	89.450	181.130	7004.97	2684.51	-2663.80	-458.48	1747642.95	14574466.28	40°07'49.608"N	104°36'58.998"W	1.57	
10403.00	90.370	181.600	7005.11	2771.47	-2750.77	-460.55	1747641.25	14574379.33	40°07'48.749"N	104°36'59.024"W	1.19	
10491.00	90.310	179.670	7004.59	2859.38	-2838.76	-461.53	1747640.66	14574291.37	40°07'47.879"N	104°36'59.037"W	2.19	
10578.00	89.570	180.200	7004.68	2946.25	-2925.76	-461.43	1747641.13	14574204.41	40°07'47.019"N	104°36'59.035"W	1.05	
10665.00	89.970	179.710	7005.03	3033.12	-3012.76	-461.36	1747641.58	14574117.44	40°07'46.160"N	104°36'59.035"W	0.73	
10753.00	90.550	180.020	7004.63	3120.98	-3100.76	-461.15	1747642.17	14574029.48	40°07'45.290"N	104°36'59.032"W	0.75	
10841.00	89.970	179.660	7004.23	3208.84	-3188.76	-460.91	1747642.79	14573941.52	40°07'44.420"N	104°36'59.029"W	0.78	
10928.00	88.890	180.280	7005.10	3295.71	-3275.75	-460.86	1747643.22	14573854.56	40°07'43.561"N	104°36'59.028"W	1.43	
11016.00	89.260	180.440	7006.52	3383.60	-3363.74	-461.41	1747643.04	14573766.61	40°07'42.691"N	104°36'59.035"W	0.46	
11103.00	89.570	180.110	7007.40	3470.49	-3450.73	-461.83	1747643.00	14573679.65	40°07'41.832"N	104°36'59.040"W	0.52	
11191.00	89.780	179.480	7007.90	3558.35	-3538.73	-461.52	1747643.70	14573591.68	40°07'40.962"N	104°36'59.036"W	0.75	
11279.00	90.180	179.000	7007.93	3646.15	-3626.72	-460.35	1747645.25	14573503.73	40°07'40.092"N	104°36'59.021"W	0.71	
11366.00	90.490	178.730	7007.43	3732.92	-3713.70	-458.63	1747647.35	14573416.79	40°07'39.233"N	104°36'58.999"W	0.47	
11453.00	89.200	179.400	7007.66	3819.70	-3800.69	-457.21	1747649.14	14573329.85	40°07'38.373"N	104°36'58.981"W	1.67	
11541.00	89.290	179.670	7008.82	3907.53	-3888.68	-456.49	1747650.24	14573241.90	40°07'37.504"N	104°36'58.972"W	0.32	

REFERENCE WELLPATH IDENTIFICATION			
Operator	KERR-MCGEE OIL & GAS ONSHORE LP (WA)	Slot	SLOT#13 GUEST 29N-25HZ (1907'FWL & 2390'FSL, SEC.13)
Area	COLORADO	Well	GUEST 29N-25HZ
Field	WELD COUNTY (UTM/TRUE NORTH)	Wellbore	GUEST 29N-25HZ AWB
Facility	SEC.13-T2N-R65W		

WELLPATH DATA (189 stations) † = interpolated/extrapolated station												
MD [ft]	Inclination [°]	Azimuth [°]	TVD [ft]	Vert Sect [ft]	North [ft]	East [ft]	Grid East [US ft]	Grid North [US ft]	Latitude	Longitude	DLS ["/100ft]	Comments
11628.00	88.860	178.630	7010.22	3994.31	-3975.65	-455.20	1747651.91	14573154.96	40°07'36.644"N	104°36'58.955"W	1.29	
11716.00	90.120	179.300	7011.01	4082.08	-4063.63	-453.61	1747653.88	14573067.02	40°07'35.775"N	104°36'58.935"W	1.62	
11804.00	89.970	178.640	7010.94	4169.85	-4151.62	-452.03	1747655.84	14572979.08	40°07'34.905"N	104°36'58.914"W	0.77	
11891.00	91.170	181.690	7010.07	4256.73	-4238.60	-452.28	1747655.96	14572892.13	40°07'34.046"N	104°36'58.917"W	3.77	
11979.00	91.510	181.250	7008.02	4344.67	-4326.55	-454.54	1747654.09	14572804.21	40°07'33.177"N	104°36'58.946"W	0.63	
12066.00	91.110	179.820	7006.03	4431.56	-4413.52	-455.35	1747653.65	14572717.27	40°07'32.317"N	104°36'58.957"W	1.71	
12154.00	89.820	180.650	7005.31	4519.44	-4501.51	-455.71	1747653.88	14572629.31	40°07'31.448"N	104°36'58.961"W	1.74	
12241.00	89.540	179.680	7005.80	4606.33	-4588.51	-455.96	1747653.80	14572542.34	40°07'30.588"N	104°36'58.965"W	1.16	
12329.00	89.720	179.270	7006.37	4694.16	-4676.51	-455.15	1747654.99	14572454.39	40°07'29.718"N	104°36'58.954"W	0.51	
12416.00	90.340	179.300	7006.32	4780.97	-4763.50	-454.07	1747656.45	14572367.43	40°07'28.859"N	104°36'58.940"W	0.71	
12503.00	90.800	179.020	7005.46	4867.76	-4850.48	-452.79	1747658.10	14572280.49	40°07'27.999"N	104°36'58.924"W	0.62	
12591.00	91.020	178.820	7004.06	4955.52	-4938.46	-451.13	1747660.14	14572192.56	40°07'27.130"N	104°36'58.902"W	0.34	
12678.00	89.350	178.540	7003.78	5042.26	-5025.43	-449.13	1747662.52	14572105.63	40°07'26.270"N	104°36'58.877"W	1.95	
12765.00	89.510	177.950	7004.64	5128.95	-5112.39	-446.47	1747665.56	14572018.72	40°07'25.411"N	104°36'58.842"W	0.70	
12853.00	91.050	178.590	7004.21	5216.63	-5200.34	-443.81	1747668.60	14571930.81	40°07'24.542"N	104°36'58.808"W	1.90	
12940.00	91.780	179.490	7002.06	5303.39	-5287.30	-442.35	1747670.43	14571843.89	40°07'23.682"N	104°36'58.789"W	1.33	
13027.00	91.050	181.410	6999.92	5390.27	-5374.27	-443.04	1747670.13	14571756.96	40°07'22.823"N	104°36'58.798"W	2.36	
13115.00	91.320	180.580	6998.10	5478.19	-5462.23	-444.56	1747668.98	14571669.02	40°07'21.954"N	104°36'58.818"W	0.99	
13203.00	90.370	181.420	6996.80	5566.12	-5550.21	-446.10	1747667.83	14571581.07	40°07'21.084"N	104°36'58.837"W	1.44	
13290.00	91.320	180.640	6995.51	5653.06	-5637.18	-447.66	1747666.64	14571494.12	40°07'20.225"N	104°36'58.858"W	1.41	
13378.00	91.110	181.980	6993.65	5741.00	-5725.14	-449.67	1747665.01	14571406.19	40°07'19.356"N	104°36'58.883"W	1.54	
13465.00	90.770	182.430	6992.22	5827.97	-5812.06	-453.02	1747662.04	14571319.29	40°07'18.497"N	104°36'58.926"W	0.65	
13553.00	89.820	182.160	6991.77	5915.96	-5899.99	-456.55	1747658.90	14571231.38	40°07'17.628"N	104°36'58.972"W	1.12	
13640.00	90.680	181.350	6991.39	6002.94	-5986.95	-459.21	1747656.61	14571144.45	40°07'16.768"N	104°36'59.006"W	1.36	
13727.00	90.280	180.510	6990.66	6089.87	-6073.93	-460.62	1747655.58	14571057.49	40°07'15.909"N	104°36'59.024"W	1.07	
13814.00	89.630	180.030	6990.73	6176.77	-6160.93	-461.03	1747655.55	14570970.53	40°07'15.049"N	104°36'59.030"W	0.93	
13901.00	90.060	179.260	6990.96	6263.61	-6247.93	-460.49	1747656.46	14570883.57	40°07'14.189"N	104°36'59.023"W	1.01	
13989.00	90.650	178.760	6990.42	6351.39	-6335.91	-458.97	1747658.36	14570795.63	40°07'13.320"N	104°36'59.003"W	0.88	
14076.00	90.120	179.370	6989.83	6438.18	-6422.90	-457.55	1747660.16	14570708.68	40°07'12.460"N	104°36'58.985"W	0.93	
14164.00	90.710	178.740	6989.20	6525.96	-6510.88	-456.10	1747661.99	14570620.74	40°07'11.591"N	104°36'58.966"W	0.98	
14251.00	90.220	179.130	6988.49	6612.73	-6597.86	-454.48	1747663.98	14570533.80	40°07'10.731"N	104°36'58.945"W	0.72	
14338.00	89.450	180.350	6988.74	6699.58	-6684.86	-454.09	1747664.76	14570446.84	40°07'09.871"N	104°36'58.940"W	1.66	
14426.00	88.740	179.190	6990.13	6787.42	-6772.85	-453.74	1747665.49	14570358.89	40°07'09.002"N	104°36'58.935"W	1.55	
14513.00	90.090	180.490	6991.02	6874.27	-6859.84	-453.49	1747666.11	14570271.93	40°07'08.142"N	104°36'58.932"W	2.15	
14601.00	90.800	181.060	6990.34	6962.20	-6947.83	-454.68	1747665.30	14570183.97	40°07'07.273"N	104°36'58.948"W	1.03	
14688.00	89.970	180.460	6989.75	7049.13	-7034.81	-455.84	1747664.52	14570097.01	40°07'06.413"N	104°36'58.962"W	1.18	
14776.00	90.030	179.760	6989.75	7137.01	-7122.81	-456.01	1747664.74	14570009.05	40°07'05.544"N	104°36'58.965"W	0.80	
14863.00	90.950	179.070	6989.01	7223.83	-7209.80	-455.12	1747666.00	14569922.10	40°07'04.684"N	104°36'58.953"W	1.32	
14882.00†	90.533	179.076	6988.76	7242.78	-7228.80	-454.81	1747666.39	14569903.11	40°07'04.496"N	104°36'58.949"W	2.19	ENTERED RADIUS TOE (425'FSL & 1497'FWL, SEC.24) 40.1179156 -104.6163748
14951.00	89.020	179.100	6989.03	7311.61	-7297.79	-453.71	1747667.79	14569834.15	40°07'03.814"N	104°36'58.935"W	2.19	
15038.00	89.970	179.110	6989.80	7398.40	-7384.77	-452.35	1747669.52	14569747.21	40°07'02.955"N	104°36'58.917"W	1.09	
15126.00	90.920	178.390	6989.11	7486.14	-7472.75	-450.43	1747671.82	14569659.28	40°07'02.085"N	104°36'58.893"W	1.35	
15214.00	90.340	180.790	6988.15	7573.97	-7560.73	-449.81	1747672.83	14569571.33	40°07'01.216"N	104°36'58.885"W	2.81	
15302.00	89.600	179.730	6988.19	7661.86	-7648.73	-450.20	1747672.81	14569483.37	40°07'00.346"N	104°36'58.890"W	1.47	
15389.00	90.150	179.440	6988.38	7748.70	-7735.73	-449.57	1747673.82	14569396.41	40°06'59.487"N	104°36'58.882"W	0.71	

REFERENCE WELLPATH IDENTIFICATION			
Operator	KERR-MCGEE OIL & GAS ONSHORE LP (WA)	Slot	SLOT#13 GUEST 29N-25HZ (1907'FWL & 2390'FSL, SEC.13)
Area	COLORADO	Well	GUEST 29N-25HZ
Field	WELD COUNTY (UTM/TRUE NORTH)	Wellbore	GUEST 29N-25HZ AWB
Facility	SEC.13-T2N-R65W		

WELLPATH DATA (189 stations)												
MD [ft]	Inclination [°]	Azimuth [°]	TVD [ft]	Vert Sect [ft]	North [ft]	East [ft]	Grid East [US ft]	Grid North [US ft]	Latitude	Longitude	DLS [°/100ft]	Comments
15477.00	91.110	179.540	6987.41	7836.52	-7823.72	-448.79	1747674.99	14569308.45	40°06'58.617"N	104°36'58.872"W	1.10	
15564.00	88.460	180.080	6987.74	7923.38	-7910.71	-448.50	1747675.65	14569221.50	40°06'57.757"N	104°36'58.868"W	3.11	
15652.00	89.480	180.870	6989.32	8011.27	-7998.69	-449.23	1747675.30	14569133.55	40°06'56.888"N	104°36'58.877"W	1.47	
15739.00	89.540	180.480	6990.07	8098.19	-8085.68	-450.26	1747674.66	14569046.59	40°06'56.028"N	104°36'58.890"W	0.45	
15826.00	88.830	180.920	6991.30	8185.11	-8172.67	-451.32	1747673.97	14568959.64	40°06'55.169"N	104°36'58.904"W	0.96	
15914.00	88.000	180.730	6993.74	8273.00	-8260.62	-452.59	1747673.09	14568871.71	40°06'54.300"N	104°36'58.920"W	0.97	
16002.00	88.980	180.470	6996.06	8360.89	-8348.59	-453.51	1747672.55	14568783.78	40°06'53.430"N	104°36'58.932"W	1.15	
16089.00	88.740	180.420	6997.79	8447.78	-8435.57	-454.18	1747672.25	14568696.83	40°06'52.571"N	104°36'58.941"W	0.28	LAST BHI MWD+IFR+SC SURVEY
16140.00	88.740	180.420	6998.91	8498.72	-8486.55	-454.56	1747672.09	14568645.86	40°06'52.067"N	104°36'58.946"W	0.00	PTB (833'FNL & 1498'FWL,SEC.25) 40.1144630 -104.6163738

TARGETS								
Name	TVD [ft]	North [ft]	East [ft]	Grid East [US ft]	Grid North [US ft]	Latitude	Longitude	Shape
SEC.13-T2N-R65W	-9.00	0.00	-29.90	1748059.81	14577130.87	40°08'15.932"N	104°36'53.480"W	polygon
SEC.24-T2N-R65W	-9.00	0.00	-29.90	1748059.81	14577130.87	40°08'15.932"N	104°36'53.480"W	polygon
SEC.25-T2N-R65W	-9.00	0.00	-29.90	1748059.81	14577130.87	40°08'15.932"N	104°36'53.480"W	polygon
GUEST 29N-25HZ BHL REV-1(872'FNL & 1496'FWL,SEC.25)	6986.20	-8525.51	-456.85	1747669.98	14568606.91	40°06'51.682"N	104°36'58.975"W	point
GUEST 29N-25HZ BHL REV-2(872'FNL & 1516'FWL,SEC.25)	6986.20	-8525.51	-436.84	1747689.97	14568607.00	40°06'51.682"N	104°36'58.718"W	point
GUEST 29N-25HZ CIRCLE 1	7005.20	250.40	-600.55	1747488.30	14577378.70	40°08'18.406"N	104°37'00.828"W	polygon
GUEST 29N-25HZ CIRCLE 2	7005.20	-7654.82	-630.92	1747492.20	14569476.50	40°07'00.286"N	104°37'01.216"W	polygon
GUEST 29N-25HZ LANDBOX	7005.20	0.00	0.00	1748089.70	14577131.00	40°08'15.932"N	104°36'53.095"W	polygon
GUEST 29N-25HZ HEEL REV-1(2548'FSL & 1448'FWL,SEC.13)	7005.20	162.22	-458.70	1747630.48	14577291.17	40°08'17.535"N	104°36'59.001"W	point

WELLPATH COMPOSITION - Ref Wellbore: GUEST 29N-25HZ AWB Ref Wellpath: GUEST 29N-25HZ AWP				
Start MD [ft]	End MD [ft]	Positional Uncertainty Model	Log Name/Comment	Wellbore
17.00	1801.00	Custom APC_ISCWSA REV 2 MWD+IFR1 (approximation)	SDI MWD+IFR SURVEYS <175 - 1801>	GUEST 29N-25HZ AWB
1801.00	16089.00	Custom APC_ISCWSA REV 2 MWD+IFR1+SC (approximation)	BHI APC_ISCWSA REV 2 MWD+IFR+SC <1893 - 16089>	GUEST 29N-25HZ AWB
16089.00	16140.00	Blind Drilling (std)	Projection to bit	GUEST 29N-25HZ AWB

REFERENCE WELLPATH IDENTIFICATION			
Operator	KERR-MCGEE OIL & GAS ONSHORE LP (WA)	Slot	SLOT#13 GUEST 29N-25HZ (1907'FWL & 2390'FSL, SEC.13)
Area	COLORADO	Well	GUEST 29N-25HZ
Field	WELD COUNTY (UTM/TRUE NORTH)	Wellbore	GUEST 29N-25HZ AWB
Facility	SEC.13-T2N-R65W		

WELLPATH COMMENTS				
MD [ft]	Inclination [°]	Azimuth [°]	TVD [ft]	Comment
175.00	0.350	340.430	175.00	FIRST SDI MWD+IFR SURVEY
1801.00	18.140	324.110	1762.57	LAST SDI MWD+IFR SURVEY, ENTERED RADIUS HEEL/LANDBOX (2669'FSL & 1764'FWL, SEC.13) 40.1385260 -104.6152607
1893.00	18.090	326.870	1850.01	FIRST BHI MWD+IFR+SC SURVEY
6360.00	2.408	165.605	6236.67	KOP
7519.00	87.533	178.295	6997.23	LANDING (2522'FSL & 1455'FWL, SEC.13) 40.1381218 -104.6163663
14882.00	90.533	179.076	6988.76	ENTERED RADIUS TOE (425'FSL & 1497'FWL, SEC.24) 40.1179156 -104.6163748
16089.00	88.740	180.420	6997.79	LAST BHI MWD+IFR+SC SURVEY
16140.00	88.740	180.420	6998.91	PTB (833'FNL & 1498'FWL, SEC.25) 40.1144630 -104.6163738