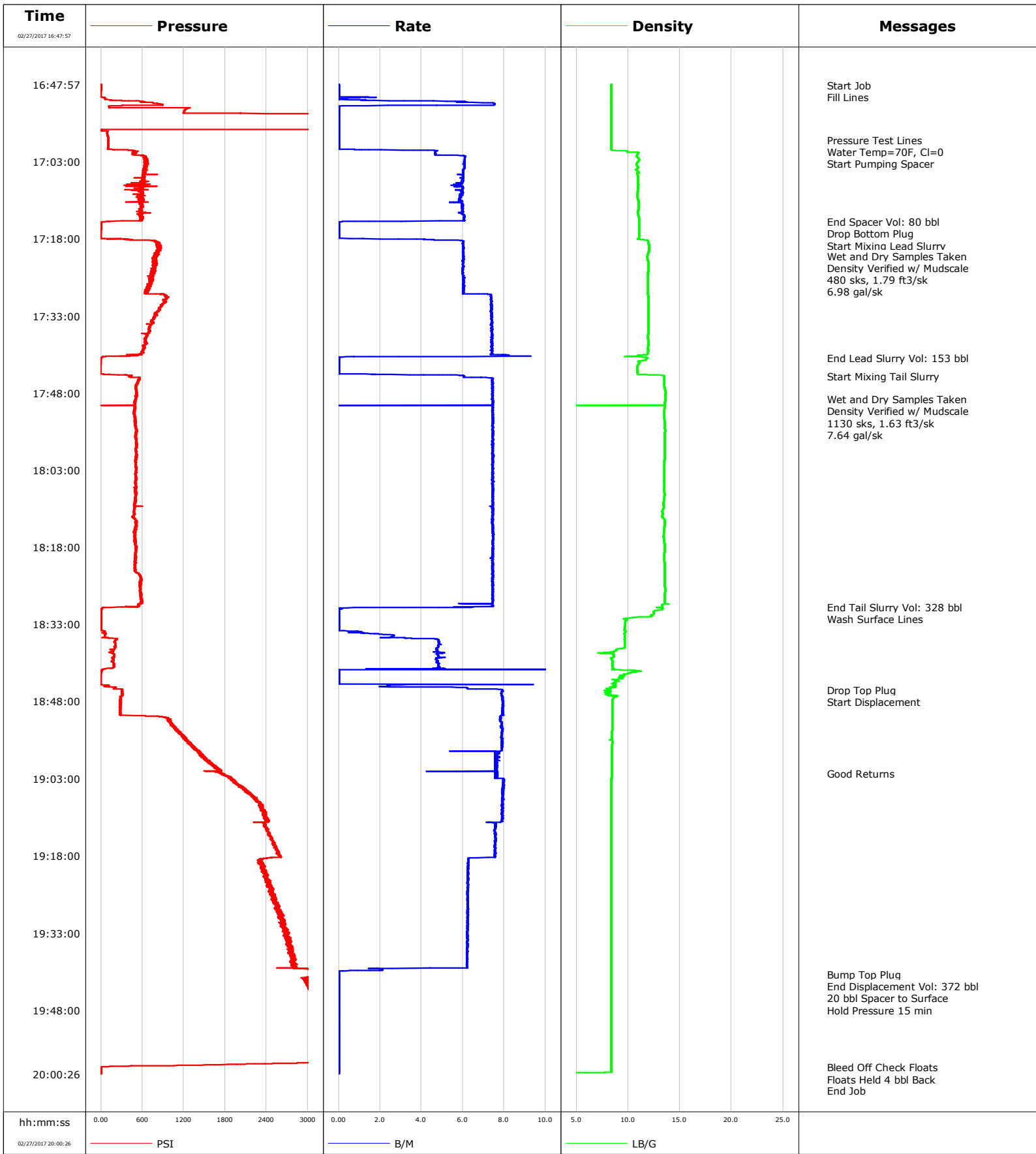


<b>Well</b>	GUEST28N-25HZ	<b>Client</b>	ANADARKO PETROLEUM COMPANY
<b>Field</b>	Wattenberg	<b>SIR No.</b>	DMBW-00700
<b>Engineer</b>	Billy Barg	<b>Job Type</b>	Production
<b>Country</b>	United States	<b>Job Date</b>	02-27-2017



				Customer			Job Number	
				ANADARKO PETROLEUM COMPANY			DMBW-00700	
Well		Location (legal)			Schlumberger Location		Job Start	
GUEST28N-25HZ 0631662928					Cheyenne, WY		Feb/27/2017	
Field		Formation Name/Type		Deviation	Bit Size	Well MD	Well TVD	
Wattenberg				deg	7.9 in	16054.0 ft	7012.0 ft	
County		State/Province		BHP	BHST	BHCT	Pore Press. Gradient	
WELD		Colorado		psi	219 degF	221 degF	lb/gal	
Well Master		API/UWI						
0631662928		05123424540000						
Rig Name	Drilled For		Service Via	Casing/Liner				
Xtreme 22	Oil and Gas		Land					
	Depth, ft	Size, in	Weight, lb/ft	Grade	Thread			
Offshore Zone	1852.0	9.6	36.0	J-55	LTC			
Well Class	16043.2	5.5	17.0	HCP-110	LTC			
New	Development							
Drilling Fluid Type		Max. Density	Plastic Viscosity	Tubing/Drill Pipe				
OBM		9.80 lb/gal	cP					
T/D	Depth, ft	Size, in	Weight, lb/ft	Grade	Thread			
Service Line	Job Type							
Cementing	Production							
Max. Allowed Tub. Press	Max. Allowed Ann. Press	WH Connection		Perforations/Open Hole				
psi	psi	5.5" LTC						
Top, ft	Bottom, ft	shot/ft	No. of Shots	Total Interval				
ft	ft			ft				
ft	ft			Diameter		in		
ft	ft							
Treat Down		Displacement		Packer Type		Packer Depth		
Casing		372.0 bbl				ft		
Tubing Vol.		Casing Vol.		Annular Vol.		Openhole Vol.		
bbl		bbl		527.5 bbl		bbl		
Casing/Tubing Secured		1 Hole Vol. Circulated prior to Cement		Casing Tools		Squeeze Job		
<input type="checkbox"/>		<input type="checkbox"/>						
Lift Pressure		Shoe Type		Shoe Depth		Squeeze Type		
11480 psi		Float		16043.2 ft				
Pipe Rotated		Pipe Reciprocated		Stage Tool Type		Tool Depth		
<input type="checkbox"/>		<input type="checkbox"/>				ft		
No. Centralizers		Top Plugs	Bottom Plugs	Stage Tool Depth		Tail Pipe Size		
		1	1	ft		in		
Cement Head Type		Job Scheduled For		Arrived on Location		Leave Location		
Double		Feb/27/2017 12:00		Feb/27/2017 12:00		Feb/27/2017 21:00		
		Collar Type		Collar Depth		Tail Pipe Depth		
		Float		15993.9 ft		ft		
		Sqz. Total Vol.						
		bbl						
Date	Time 24-hr clock	Treating Pressure PSI	Flow Rate B/M	Density LB/G	Volume BBL	Message		
02/27/2017	16:47:57	0	0.0	8.39	0.0	Started Acquisition		
02/27/2017	16:48:05	-0	0.0	8.39	0.0	Start Job		
02/27/2017	16:48:13	0	0.0	8.39	0.0	Fill Lines		
02/27/2017	16:49:37	-2	0.0	8.39	0.0			
02/27/2017	16:51:17	593	6.1	8.38	1.1			
02/27/2017	16:52:57	1216	0.0	8.39	6.7			
02/27/2017	16:54:37	5100	0.0	8.39	6.7			
02/27/2017	16:56:17	5044	0.0	8.39	6.7			
02/27/2017	16:57:57	99	0.0	8.39	6.7			
02/27/2017	16:58:46	104	0.0	8.39	6.7	Pressure Test Lines		
02/27/2017	16:59:06	102	0.0	8.39	6.7	Water Temp=70F, Cl=0		
02/27/2017	16:59:37	102	0.0	8.39	6.7			
02/27/2017	17:00:51	496	4.8	9.36	7.3	Start Pumping Spacer		
02/27/2017	17:01:17	497	4.7	10.99	9.3			
02/27/2017	17:02:57	684	6.1	10.98	18.8			
02/27/2017	17:04:37	658	6.0	10.77	28.9			
02/27/2017	17:06:17	627	6.0	10.95	38.9			
02/27/2017	17:07:57	564	6.0	10.96	48.8			
02/27/2017	17:09:37	563	5.9	10.90	58.7			
02/27/2017	17:11:17	556	6.0	11.01	68.5			
02/27/2017	17:12:57	578	5.9	10.94	78.4			

Well			Field		Job Start	Customer	Job Number
GUEST28N-25HZ 0631662928			Wattenberg		Feb/27/2017	ANADARKO PETROLEUM COMPANY	DMBW-00700
Date	Time 24-hr clock	Treating Pressure PSI	Flow Rate B/M	Density LB/G	Volume BBL	Message	
02/27/2017	17:14:37	110	0.8	11.07	88.3	Drop Bottom Plug	
02/27/2017	17:16:17	0	0.0	11.07	88.4		
02/27/2017	17:17:57	4	0.6	11.07	88.4		
02/27/2017	17:19:20	836	6.0	12.00	95.8	Start Mixing Lead Slurry	
02/27/2017	17:19:37	862	6.0	12.02	97.5		
02/27/2017	17:21:17	812	6.0	11.87	107.6	Wet and Dry Samples Taken	
02/27/2017	17:21:56	802	6.0	11.86	111.5	Density Verified w/ Mudscale	
02/27/2017	17:22:57	776	6.0	11.97	117.6		
02/27/2017	17:24:01	787	6.0	11.95	124.0	480 sks, 1.79 ft3/sk	
02/27/2017	17:24:11	784	6.0	11.94	125.0	6.98 gal/sk	
02/27/2017	17:24:37	734	6.0	11.91	127.6		
02/27/2017	17:26:17	726	6.0	11.92	137.6		
02/27/2017	17:27:57	668	6.0	11.91	147.7		
02/27/2017	17:29:37	958	7.4	11.94	158.9		
02/27/2017	17:31:17	869	7.4	11.97	171.2		
02/27/2017	17:32:57	804	7.4	11.97	183.5		
02/27/2017	17:34:37	732	7.4	11.97	195.8		
02/27/2017	17:36:17	685	7.4	11.98	208.1		
02/27/2017	17:37:57	633	7.4	11.96	220.5		
02/27/2017	17:39:37	617	7.4	11.94	232.8		
02/27/2017	17:41:10	7	0.0	11.87	242.8	End Lead Slurry Vol: 153 bbl	
02/27/2017	17:41:17	3	0.0	11.84	242.8		
02/27/2017	17:42:57	-9	0.0	10.89	242.8		
02/27/2017	17:44:37	430	6.0	13.47	243.9		
02/27/2017	17:44:39	434	6.1	13.50	244.1	Start Mixing Tail Slurry	
02/27/2017	17:46:17	526	7.4	13.49	255.7		
02/27/2017	17:47:57	509	7.4	13.62	268.1		
02/27/2017	17:49:11	507	7.4	13.58	277.3	Wet and Dry Samples Taken	
02/27/2017	17:49:18	496	7.4	13.58	278.2	Density Verified w/ Mudscale	
02/27/2017	17:49:37	494	7.4	13.57	280.5		
02/27/2017	17:50:13	490	7.4	13.55	285.0	1130 sks, 1.63 ft3/sk	
02/27/2017	17:50:22	495	7.4	13.55	286.1	7.64 gal/sk	
02/27/2017	17:51:17	479	7.4	13.51	292.9		
02/27/2017	17:52:57	487	7.5	13.51	305.3		
02/27/2017	17:54:37	507	7.5	13.55	317.7		
02/27/2017	17:56:17	502	7.4	13.54	330.2		
02/27/2017	17:57:57	510	7.4	13.54	342.6		
02/27/2017	17:59:37	516	7.4	13.54	355.0		
02/27/2017	18:01:17	506	7.4	13.50	367.4		
02/27/2017	18:02:57	511	7.4	13.49	379.8		
02/27/2017	18:04:37	506	7.5	13.48	392.2		
02/27/2017	18:06:17	506	7.4	13.48	404.6		
02/27/2017	18:07:57	511	7.4	13.52	417.0		
02/27/2017	18:09:37	474	7.4	13.39	429.4		
02/27/2017	18:11:17	477	7.4	13.33	441.8		
02/27/2017	18:12:57	519	7.4	13.56	454.2		
02/27/2017	18:14:37	499	7.4	13.49	466.6		
02/27/2017	18:16:17	498	7.5	13.43	479.0		
02/27/2017	18:17:57	501	7.4	13.56	491.5		
02/27/2017	18:19:37	503	7.4	13.50	503.9		
02/27/2017	18:21:17	489	7.5	13.52	516.3		
02/27/2017	18:22:57	520	7.4	13.54	528.7		
02/27/2017	18:24:37	577	7.4	13.56	541.1		
02/27/2017	18:26:17	568	7.4	13.57	553.5		

Well		Field		Job Start		Customer		Job Number	
GUEST28N-25HZ 0631662928		Wattenberg		Feb/27/2017		ANADARKO PETROLEUM COMPANY		DMBW-00700	
Date	Time 24-hr clock	Treating Pressure PSI	Flow Rate B/M	Density LB/G	Volume BBL	Message			
02/27/2017	18:29:37	294	5.9	13.19	578.1				
02/27/2017	18:29:38	294	6.5	13.29	578.2	End Tail Slurry Vol: 328 bbl			
02/27/2017	18:29:44	39	1.7	13.02	578.8	Wash Surface Lines			
02/27/2017	18:31:17	6	0.0	12.27	578.9				
02/27/2017	18:32:57	5	0.0	9.71	578.9				
02/27/2017	18:34:37	64	0.5	9.71	579.2				
02/27/2017	18:36:17	200	4.8	9.65	584.4				
02/27/2017	18:37:57	191	4.8	8.84	592.4				
02/27/2017	18:39:37	159	4.7	8.35	600.4				
02/27/2017	18:41:17	184	4.9	8.47	608.4				
02/27/2017	18:42:57	-3	0.0	9.41	612.4				
02/27/2017	18:44:37	-2	0.0	8.60	612.4				
02/27/2017	18:45:45	301	7.9	8.10	617.6	Drop Top Plug			
02/27/2017	18:45:47	310	7.9	7.92	617.9	Start Displacement			
02/27/2017	18:46:17	305	7.9	8.09	621.8				
02/27/2017	18:47:57	288	7.9	8.47	635.0				
02/27/2017	18:49:37	282	7.9	8.47	648.2				
02/27/2017	18:51:17	982	7.8	8.46	661.3				
02/27/2017	18:52:57	1041	7.8	8.45	674.4				
02/27/2017	18:54:37	1211	7.9	8.44	687.6				
02/27/2017	18:56:17	1278	7.9	8.45	700.7				
02/27/2017	18:57:57	1429	7.7	8.44	713.7				
02/27/2017	18:59:37	1527	7.6	8.44	726.4				
02/27/2017	19:01:17	1730	7.6	8.44	739.0				
02/27/2017	19:01:59	1741	7.6	8.44	744.3	Good Returns			
02/27/2017	19:02:57	1867	8.0	8.44	751.7				
02/27/2017	19:04:37	2003	8.0	8.39	764.9				
02/27/2017	19:06:17	2197	8.0	8.38	778.1				
02/27/2017	19:07:57	2295	7.9	8.38	791.3				
02/27/2017	19:09:37	2349	7.9	8.38	804.5				
02/27/2017	19:11:17	2395	7.9	8.38	817.7				
02/27/2017	19:12:57	2400	7.5	8.38	830.3				
02/27/2017	19:14:37	2477	7.6	8.38	843.0				
02/27/2017	19:16:17	2527	7.6	8.38	855.6				
02/27/2017	19:17:57	2598	7.6	8.38	868.2				
02/27/2017	19:19:37	2300	6.3	8.38	879.1				
02/27/2017	19:21:17	2352	6.2	8.38	889.5				
02/27/2017	19:22:57	2405	6.2	8.38	900.0				
02/27/2017	19:24:37	2464	6.2	8.38	910.4				
02/27/2017	19:26:17	2493	6.2	8.38	920.7				
02/27/2017	19:27:57	2566	6.2	8.38	931.1				
02/27/2017	19:29:37	2628	6.2	8.38	941.5				
02/27/2017	19:31:17	2657	6.3	8.38	951.9				
02/27/2017	19:32:57	2685	6.2	8.38	962.3				
02/27/2017	19:34:37	2702	6.2	8.38	972.6				
02/27/2017	19:36:17	2747	6.2	8.38	983.0				
02/27/2017	19:37:57	2762	6.2	8.38	993.4				
02/27/2017	19:39:37	2793	6.2	8.38	1003.7				
02/27/2017	19:41:07	3448	0.0	8.38	1006.2	Bump Top Plug			
02/27/2017	19:41:08	3457	0.0	8.38	1006.2	End Displacement Vol: 372 bbl			
02/27/2017	19:41:17	3383	0.0	8.38	1006.2				
02/27/2017	19:41:24	3280	0.0	8.38	1006.2	20 bbl Spacer to Surface			
02/27/2017	19:41:57	2951	0.0	8.39	1006.2	Hold Pressure 15 min			
02/27/2017	19:42:57	2974	0.0	8.39	1006.2				

Well		Field		Job Start		Customer		Job Number	
GUEST28N-25HZ 0631662928		Wattenberg		Feb/27/2017		ANADARKO PETROLEUM COMPANY		DMBW-00700	
Date	Time 24-hr clock	Treating Pressure PSI	Flow Rate B/M	Density LB/G	Volume BBL	Message			
02/27/2017	19:46:17	3084	0.0	8.39	1006.2				
02/27/2017	19:47:57	3123	0.0	8.39	1006.2				
02/27/2017	19:49:37	3158	0.0	8.39	1006.2				
02/27/2017	19:51:17	3189	0.0	8.39	1006.2				
02/27/2017	19:52:57	3220	0.0	8.39	1006.2				
02/27/2017	19:54:37	3251	0.0	8.39	1006.2				
02/27/2017	19:56:17	3281	0.0	8.39	1006.2				
02/27/2017	19:57:57	3307	0.0	8.39	1006.2				
02/27/2017	19:59:10	3	0.0	8.39	1006.2	Bleed Off Check Floats			
02/27/2017	19:59:37	4	0.0	8.39	1006.2				
02/27/2017	20:00:03	4	0.0	8.39	1006.2	Floats Held 4 bbl Back			

### Post Job Summary

Average Pump Rates, bbl/min					Volume of Fluid Injected, bbl			
Slurry	N2	Mud	Maximum Rate	Total Slurry	Mud	Spacer	N2	
6.8			25.0	481.0	0.0	80.0		
Treating Pressure Summary, psi					Breakdown Fluid			
Maximum	Final	Average	Bump Plug to	Breakdown	Type	Volume	Density	
5161	3	1284	3000			bbl	lb/gal	
Avg. N2 Percent	Designed Slurry Volume	Displacement	Mix Water Temp	Cement Circulated to Surface?	Volume			
%	481.0 bbl	372.0 bbl	70 degF	<input type="checkbox"/>	bbl		To	ft
				Washed Thru Perfs			Job Completed	<input checked="" type="checkbox"/>
				Circulation Lost				
Customer or Authorized Representative		Schlumberger Supervisor						
Albert Bryan		Billy Barg						