

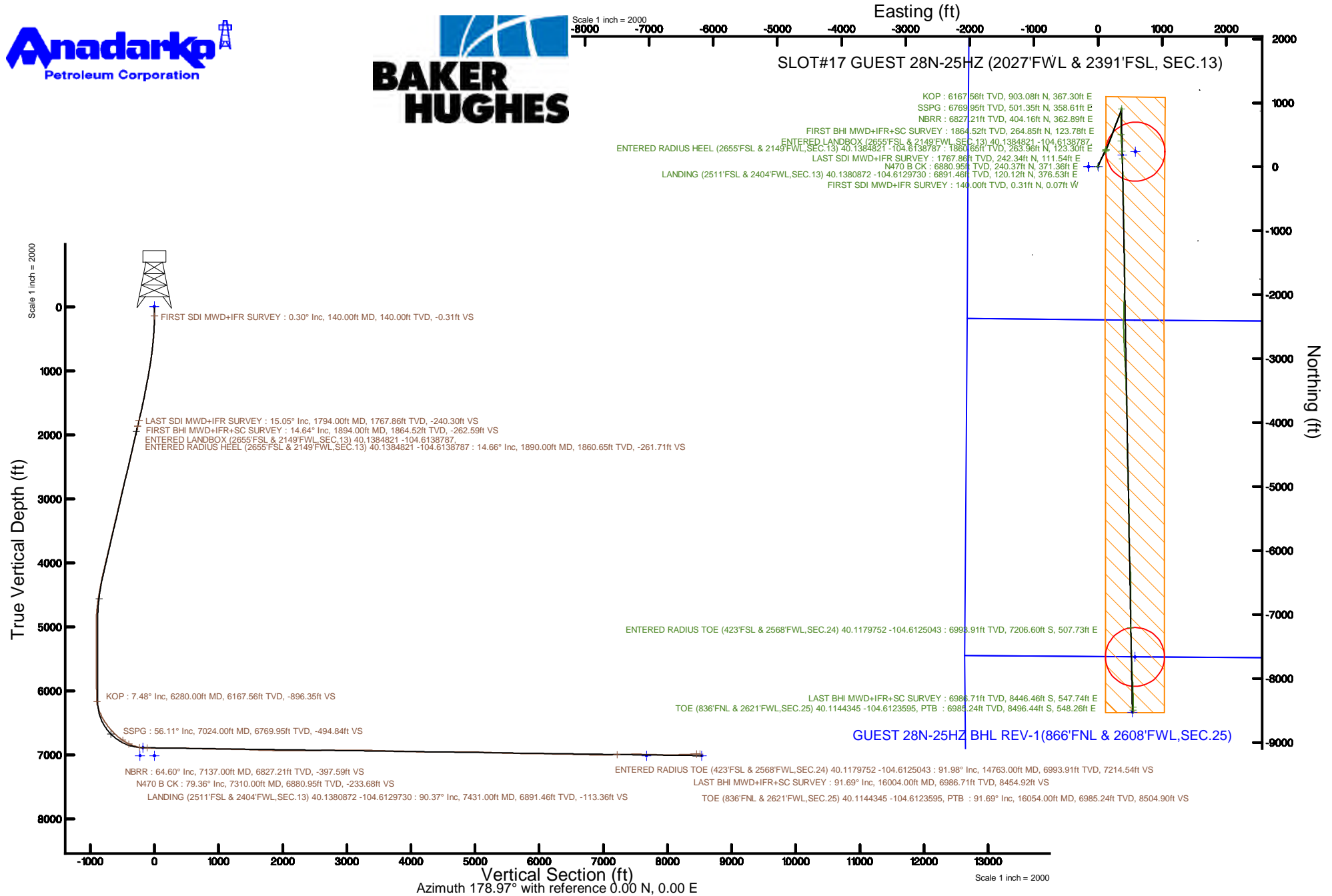
# KERR-MCGEE OIL & GAS ONSHORE LP (WA)

Location: COLORADO Slot: SLOT#17 GUEST 28N-25HZ (2027'FWL & 2391'FSL, SEC.13)  
 Field: WELD COUNTY (UTM/TRUE NORTH) Well: GUEST 28N-25HZ  
 Facility: SEC.13-T2N-R65W Wellbore: GUEST 28N-25HZ PWB

Plot reference wellpath is GUEST 28N-25HZ Rev-C.0 PWP	Grid System: NAD83 / UTM Zone 13 North, US feet
True vertical depths are referenced to Xtreme 22 (17RKB) (RT)	* = Wellpath was transformed from a different geodetic datum
Measured depths are referenced to Xtreme 22 (17RKB) (RT)	North Reference: True north
Xtreme 22 (17RKB) (RT) to Mean Sea Level: 4889 feet	Scale: True distance
Mean Sea Level to Mud line (At Slot: SLOT#17 GUEST 28N-25HZ (2027'FWL & 2391'FSL, SEC.13)); 0 feet	Depths are in feet
Coordinates are in feet referenced to Slot	Created by: painsetr on 2017-03-07
	Database: WA_DEN_Anadarko_Defn



Scale 1 inch = 2000



REFERENCE WELLPATH IDENTIFICATION			
Operator	KERR-MCGEE OIL & GAS ONSHORE LP (WA)	Slot	SLOT#17 GUEST 28N-25HZ (2027'FWL & 2391'FSL, SEC.13)
Area	COLORADO	Well	GUEST 28N-25HZ
Field	WELD COUNTY (UTM/TRUE NORTH)	Wellbore	GUEST 28N-25HZ AWB
Facility	SEC.13-T2N-R65W		

REPORT SETUP INFORMATION			
Projection System	NAD83 / UTM Zone 13 North, US feet	Software System	WellArchitect® 5.0
North Reference	True	User	Painsetr
Scale	0.999613	Report Generated	3/7/2017 at 2:55 PM
Convergence at slot	0.25° East	Database/Source file	WA_DEN_Anadarko_Defn/GUEST_28N-25HZ_AWP.xml

WELLPATH LOCATION						
	Local coordinates		Grid coordinates		Geographic coordinates	
	North[ft]	East[ft]	Easting[US ft]	Northing[US ft]	Latitude	Longitude
Slot Location	-2154.88	-2393.02	1748209.57	14577131.02	40°08'15.927"N	104°36'51.551"W
Facility Reference Pt			1750592.08	14579295.65	40°08'37.223"N	104°36'20.740"W
Field Reference Pt			1698235.31	14552047.82	40°04'09.600"N	104°47'36.000"W

WELLPATH DATUM			
Calculation method	Minimum curvature	Xtreme 22 (17'RKB) (RT) to Facility Vertical Datum	4889.00ft
Horizontal Reference Pt	Slot	Xtreme 22 (17'RKB) (RT) to Mean Sea Level	4889.00ft
Vertical Reference Pt	Xtreme 22 (17'RKB) (RT)	Xtreme 22 (17'RKB) (RT) to Mud Line at Slot (SLOT#17 GUEST 28N-25HZ (2027'FWL & 2391'FSL, SEC.13))	4889.00ft
MD Reference Pt	Xtreme 22 (17'RKB) (RT)	Section Origin	N 0.00, E 0.00 ft
Field Vertical Reference	Mean Sea Level	Section Azimuth	178.97°

REFERENCE WELLPATH IDENTIFICATION				
Operator	KERR-MCGEE OIL & GAS ONSHORE LP (WA)		Slot	SLOT#17 GUEST 28N-25HZ (2027'FWL & 2391'FSL, SEC.13)
Area	COLORADO		Well	GUEST 28N-25HZ
Field	WELD COUNTY (UTM/TRUE NORTH)		Wellbore	GUEST 28N-25HZ AWB
Facility	SEC.13-T2N-R65W			

WELLPATH DATA (191 stations) † = interpolated/extrapolated station												
MD [ft]	Inclination [°]	Azimuth [°]	TVD [ft]	Vert Sect [ft]	North [ft]	East [ft]	Grid East [US ft]	Grid North [US ft]	Latitude	Longitude	DLS ["/100ft]	Comments
0.00†	0.000	346.790	0.00	0.00	0.00	0.00	1748209.57	14577131.02	40°08'15.927"N	104°36'51.551"W	0.00	
17.00	0.000	346.790	17.00	0.00	0.00	0.00	1748209.57	14577131.02	40°08'15.927"N	104°36'51.551"W	0.00	
140.00	0.300	346.790	140.00	-0.31	0.31	-0.07	1748209.50	14577131.33	40°08'15.930"N	104°36'51.552"W	0.24	FIRST SDI MWD+IFR SURVEY
224.00	1.450	18.390	223.99	-1.53	1.54	0.21	1748209.78	14577132.55	40°08'15.942"N	104°36'51.548"W	1.43	
311.00	2.810	17.810	310.93	-4.59	4.61	1.21	1748210.76	14577135.63	40°08'15.973"N	104°36'51.535"W	1.56	
397.00	4.130	15.650	396.77	-9.55	9.60	2.69	1748212.22	14577140.63	40°08'16.022"N	104°36'51.516"W	1.54	
482.00	5.470	20.150	481.47	-16.26	16.35	4.91	1748214.41	14577147.38	40°08'16.089"N	104°36'51.488"W	1.64	
571.00	6.450	22.230	569.99	-24.81	24.96	8.27	1748217.73	14577156.00	40°08'16.174"N	104°36'51.445"W	1.13	
659.00	6.740	23.080	657.40	-34.06	34.29	12.16	1748221.58	14577165.34	40°08'16.266"N	104°36'51.394"W	0.35	
748.00	8.070	23.840	745.66	-44.50	44.81	16.73	1748226.10	14577175.88	40°08'16.370"N	104°36'51.336"W	1.50	
833.00	9.200	25.080	829.69	-56.01	56.42	22.02	1748231.34	14577187.51	40°08'16.485"N	104°36'51.267"W	1.35	
921.00	10.300	23.610	916.42	-69.48	70.00	28.16	1748237.41	14577201.11	40°08'16.619"N	104°36'51.188"W	1.28	
1008.00	10.740	22.410	1001.96	-83.99	84.62	34.36	1748243.55	14577215.75	40°08'16.763"N	104°36'51.109"W	0.56	
1097.00	11.330	23.180	1089.31	-99.57	100.32	40.97	1748250.09	14577231.48	40°08'16.918"N	104°36'51.024"W	0.68	
1183.00	11.720	24.380	1173.58	-115.17	116.05	47.90	1748256.95	14577247.22	40°08'17.074"N	104°36'50.934"W	0.53	
1270.00	11.940	25.570	1258.73	-131.20	132.21	55.43	1748264.40	14577263.42	40°08'17.234"N	104°36'50.837"W	0.38	
1356.00	12.380	26.090	1342.80	-147.36	148.52	63.32	1748272.22	14577279.75	40°08'17.395"N	104°36'50.736"W	0.53	
1445.00	12.890	26.730	1429.65	-164.63	165.95	71.98	1748280.81	14577297.21	40°08'17.567"N	104°36'50.624"W	0.59	
1533.00	13.880	26.270	1515.25	-182.70	184.18	81.07	1748289.81	14577315.48	40°08'17.747"N	104°36'50.507"W	1.13	
1622.00	14.590	27.210	1601.52	-202.06	203.72	90.92	1748299.57	14577335.05	40°08'17.940"N	104°36'50.380"W	0.84	
1711.00	14.680	28.230	1687.63	-221.78	223.63	101.38	1748309.94	14577355.00	40°08'18.137"N	104°36'50.246"W	0.31	
1794.00	15.050	28.770	1767.86	-240.30	242.34	111.54	1748320.02	14577373.75	40°08'18.322"N	104°36'50.115"W	0.48	LAST SDI MWD+IFR SURVEY
1890.00†	14.656	28.300	1860.65	-261.71	263.96	123.30	1748331.68	14577395.41	40°08'18.535"N	104°36'49.963"W	0.43	ENTERED LANDBOX (2655'FSL & 2149'FWL, SEC.13) 40.1384821 -104.6138787, ENTERED RADIUS HEEL (
1894.00	14.640	28.280	1864.52	-262.59	264.85	123.78	1748332.15	14577396.30	40°08'18.544"N	104°36'49.957"W	0.43	Begin Run 1; FIRST BHI MWD+IFR+SC SURVEY
2069.00	14.010	24.990	2034.08	-300.91	303.53	143.20	1748351.40	14577435.04	40°08'18.926"N	104°36'49.707"W	0.59	
2157.00	14.110	16.430	2119.45	-320.72	323.47	150.74	1748358.85	14577455.01	40°08'19.124"N	104°36'49.610"W	2.36	
2244.00	12.930	20.850	2204.04	-339.87	342.74	157.20	1748365.23	14577474.30	40°08'19.314"N	104°36'49.527"W	1.80	
2332.00	13.430	24.920	2289.73	-358.20	361.21	165.01	1748372.95	14577492.80	40°08'19.497"N	104°36'49.426"W	1.20	
2419.00	15.130	24.010	2374.03	-377.57	380.75	173.89	1748381.74	14577512.37	40°08'19.690"N	104°36'49.312"W	1.97	
2506.00	14.360	22.530	2458.17	-397.75	401.08	182.65	1748390.40	14577532.73	40°08'19.891"N	104°36'49.199"W	0.99	

REFERENCE WELLPATH IDENTIFICATION			
Operator	KERR-MCGEE OIL & GAS ONSHORE LP (WA)	Slot	SLOT#17 GUEST 28N-25HZ (2027'FWL & 2391'FSL, SEC.13)
Area	COLORADO	Well	GUEST 28N-25HZ
Field	WELD COUNTY (UTM/TRUE NORTH)	Wellbore	GUEST 28N-25HZ AWB
Facility	SEC.13-T2N-R65W		

WELLPATH DATA (191 stations)												
MD [ft]	Inclination [°]	Azimuth [°]	TVD [ft]	Vert Sect [ft]	North [ft]	East [ft]	Grid East [US ft]	Grid North [US ft]	Latitude	Longitude	DLS ["/100ft]	Comments
2594.00	15.750	20.580	2543.15	-418.85	422.35	191.03	1748398.69	14577554.02	40°08'20.101"N	104°36'49.091"W	1.68	
2682.00	14.920	20.870	2628.01	-440.47	444.11	199.26	1748406.83	14577575.82	40°08'20.316"N	104°36'48.985"W	0.95	
2769.00	15.060	21.130	2712.05	-461.33	465.12	207.32	1748414.80	14577596.85	40°08'20.523"N	104°36'48.882"W	0.18	
2856.00	14.740	19.940	2796.13	-482.13	486.07	215.17	1748422.55	14577617.82	40°08'20.730"N	104°36'48.780"W	0.51	
2944.00	14.090	18.720	2881.36	-502.67	506.74	222.43	1748429.71	14577638.52	40°08'20.935"N	104°36'48.687"W	0.82	
3031.00	13.510	18.050	2965.85	-522.24	526.43	228.98	1748436.17	14577658.23	40°08'21.129"N	104°36'48.603"W	0.69	
3119.00	14.310	19.510	3051.26	-542.14	546.45	235.79	1748442.90	14577678.28	40°08'21.327"N	104°36'48.515"W	0.99	
3206.00	13.590	18.550	3135.70	-561.84	566.28	242.64	1748449.65	14577698.12	40°08'21.523"N	104°36'48.427"W	0.87	
3294.00	13.850	17.390	3221.19	-581.57	586.13	249.07	1748456.00	14577718.00	40°08'21.719"N	104°36'48.344"W	0.43	
3381.00	14.590	19.730	3305.52	-601.70	606.38	255.88	1748462.72	14577738.27	40°08'21.919"N	104°36'48.256"W	1.08	
3469.00	13.680	18.730	3390.86	-621.86	626.67	262.97	1748469.72	14577758.58	40°08'22.120"N	104°36'48.165"W	1.07	
3556.00	13.730	18.720	3475.38	-641.26	646.19	269.59	1748476.25	14577778.12	40°08'22.313"N	104°36'48.080"W	0.06	
3644.00	13.900	23.780	3560.84	-660.68	665.76	277.20	1748483.77	14577797.71	40°08'22.506"N	104°36'47.982"W	1.39	
3731.00	13.910	22.490	3645.29	-679.76	684.98	285.41	1748491.90	14577816.96	40°08'22.696"N	104°36'47.876"W	0.36	
3819.00	14.750	23.090	3730.55	-699.68	705.06	293.85	1748500.25	14577837.07	40°08'22.894"N	104°36'47.767"W	0.97	
3906.00	14.240	21.810	3814.78	-719.65	725.18	302.17	1748508.48	14577857.22	40°08'23.093"N	104°36'47.660"W	0.69	
3993.00	14.700	22.430	3899.02	-739.64	745.32	310.36	1748516.57	14577877.39	40°08'23.292"N	104°36'47.555"W	0.56	
4081.00	14.290	20.250	3984.22	-760.00	765.83	318.38	1748524.50	14577897.92	40°08'23.495"N	104°36'47.452"W	0.78	
4168.00	14.580	22.390	4068.47	-780.06	786.03	326.27	1748532.30	14577918.15	40°08'23.695"N	104°36'47.350"W	0.70	
4255.00	13.440	21.060	4152.88	-799.47	805.59	334.07	1748540.01	14577937.74	40°08'23.888"N	104°36'47.250"W	1.36	
4343.00	12.710	20.370	4238.60	-817.96	824.21	341.12	1748546.98	14577956.38	40°08'24.072"N	104°36'47.159"W	0.85	
4430.00	12.160	19.760	4323.56	-835.44	841.81	347.54	1748553.33	14577973.99	40°08'24.246"N	104°36'47.076"W	0.65	
4518.00	10.490	18.920	4409.84	-851.64	858.11	353.28	1748558.98	14577990.31	40°08'24.407"N	104°36'47.002"W	1.91	
4605.00	9.490	12.410	4495.53	-866.06	872.60	357.39	1748563.03	14578004.82	40°08'24.550"N	104°36'46.949"W	1.73	
4692.00	8.400	8.640	4581.47	-879.30	885.89	359.88	1748565.47	14578018.12	40°08'24.681"N	104°36'46.917"W	1.42	
4718.00	8.120	7.670	4607.20	-882.99	889.59	360.41	1748565.98	14578021.82	40°08'24.718"N	104°36'46.910"W	1.20	
4806.00	6.380	19.040	4694.50	-893.72	900.37	362.84	1748568.36	14578032.60	40°08'24.825"N	104°36'46.879"W	2.55	
4893.00	4.700	26.510	4781.09	-901.43	908.13	366.00	1748571.49	14578040.37	40°08'24.901"N	104°36'46.838"W	2.10	
4981.00	2.850	27.170	4868.89	-906.55	913.30	368.61	1748574.08	14578045.56	40°08'24.952"N	104°36'46.805"W	2.10	
5068.00	0.490	15.380	4955.85	-908.81	915.59	369.70	1748575.15	14578047.84	40°08'24.975"N	104°36'46.791"W	2.73	

REFERENCE WELLPATH IDENTIFICATION			
Operator	KERR-MCGEE OIL & GAS ONSHORE LP (WA)	Slot	SLOT#17 GUEST 28N-25HZ (2027'FWL & 2391'FSL, SEC.13)
Area	COLORADO	Well	GUEST 28N-25HZ
Field	WELD COUNTY (UTM/TRUE NORTH)	Wellbore	GUEST 28N-25HZ AWB
Facility	SEC.13-T2N-R65W		

WELLPATH DATA (191 stations) † = interpolated/extrapolated station												
MD [ft]	Inclination [°]	Azimuth [°]	TVD [ft]	Vert Sect [ft]	North [ft]	East [ft]	Grid East [US ft]	Grid North [US ft]	Latitude	Longitude	DLS ["/100ft]	Comments
5156.00	0.840	244.860	5043.85	-908.91	915.68	369.22	1748574.67	14578047.93	40°08'24.976"N	104°36'46.797"W	1.38	
5243.00	0.810	249.340	5130.84	-908.44	915.19	368.06	1748573.52	14578047.44	40°08'24.971"N	104°36'46.812"W	0.08	
5331.00	0.970	286.540	5218.83	-908.46	915.18	366.77	1748572.22	14578047.42	40°08'24.971"N	104°36'46.829"W	0.67	
5418.00	0.460	205.130	5305.82	-908.37	915.07	365.91	1748571.37	14578047.31	40°08'24.970"N	104°36'46.840"W	1.16	
5506.00	0.840	155.850	5393.82	-907.46	914.17	366.03	1748571.49	14578046.41	40°08'24.961"N	104°36'46.838"W	0.73	
5593.00	0.800	152.650	5480.81	-906.33	913.04	366.57	1748572.03	14578045.29	40°08'24.950"N	104°36'46.831"W	0.07	
5681.00	0.730	144.890	5568.80	-905.31	912.04	367.17	1748572.64	14578044.29	40°08'24.940"N	104°36'46.823"W	0.14	
5768.00	0.260	151.350	5655.80	-904.68	911.41	367.58	1748573.06	14578043.66	40°08'24.934"N	104°36'46.818"W	0.54	
5855.00	0.180	17.520	5742.80	-904.63	911.37	367.72	1748573.19	14578043.62	40°08'24.933"N	104°36'46.816"W	0.47	
5943.00	0.870	197.990	5830.79	-904.13	910.87	367.56	1748573.03	14578043.12	40°08'24.928"N	104°36'46.818"W	1.19	
6030.00	0.670	162.720	5917.79	-903.02	909.75	367.50	1748572.98	14578042.00	40°08'24.917"N	104°36'46.819"W	0.58	
6118.00	0.680	186.160	6005.78	-902.01	908.74	367.60	1748573.08	14578040.99	40°08'24.907"N	104°36'46.818"W	0.31	
6205.00	0.220	154.740	6092.78	-901.34	908.08	367.62	1748573.10	14578040.33	40°08'24.901"N	104°36'46.818"W	0.58	
6280.00†	7.477	184.405	6167.56	-896.35	903.08	367.30	1748572.81	14578035.33	40°08'24.851"N	104°36'46.822"W	9.72	KOP
6293.00	8.740	184.530	6180.43	-894.52	901.25	367.16	1748572.67	14578033.50	40°08'24.833"N	104°36'46.823"W	9.72	
6380.00	17.120	187.860	6265.15	-875.26	881.94	364.88	1748570.48	14578014.19	40°08'24.642"N	104°36'46.853"W	9.67	
6468.00	23.420	186.560	6347.66	-845.09	851.70	361.11	1748566.84	14577983.95	40°08'24.344"N	104°36'46.901"W	7.18	
6555.00	27.990	184.550	6426.03	-807.62	814.16	357.51	1748563.41	14577946.40	40°08'23.973"N	104°36'46.948"W	5.35	
6643.00	34.800	180.710	6501.11	-761.91	768.40	355.56	1748561.66	14577900.66	40°08'23.520"N	104°36'46.973"W	8.06	
6730.00	40.240	179.030	6570.09	-708.95	715.44	355.73	1748562.05	14577847.72	40°08'22.997"N	104°36'46.971"W	6.36	
6818.00	42.830	178.550	6635.95	-650.60	657.11	356.97	1748563.54	14577789.41	40°08'22.421"N	104°36'46.955"W	2.97	
6905.00	47.640	180.370	6697.20	-588.86	595.36	357.51	1748564.35	14577727.69	40°08'21.810"N	104°36'46.948"W	5.72	
6993.00	54.700	178.890	6752.35	-520.36	526.86	357.99	1748565.14	14577659.22	40°08'21.133"N	104°36'46.942"W	8.13	
7024.00†	56.105	178.347	6769.95	-494.84	501.35	358.61	1748565.86	14577633.72	40°08'20.881"N	104°36'46.934"W	4.76	SSPG
7080.00	58.650	177.410	6800.14	-447.69	454.22	360.36	1748567.82	14577586.62	40°08'20.416"N	104°36'46.911"W	4.76	
7137.00†	64.602	176.831	6827.21	-397.59	404.16	362.89	1748570.56	14577536.59	40°08'19.921"N	104°36'46.879"W	10.48	NBRR
7168.00	67.840	176.540	6839.71	-369.24	375.84	364.53	1748572.32	14577508.29	40°08'19.641"N	104°36'46.857"W	10.48	
7255.00	73.880	177.350	6868.22	-287.14	293.80	368.89	1748577.04	14577426.30	40°08'18.830"N	104°36'46.801"W	7.00	
7310.00†	79.361	177.363	6880.95	-233.68	240.37	371.36	1748579.74	14577372.90	40°08'18.302"N	104°36'46.769"W	9.97	N470 B CK
7343.00	82.650	177.370	6886.10	-201.10	207.82	372.86	1748581.38	14577340.37	40°08'17.981"N	104°36'46.750"W	9.97	

REFERENCE WELLPATH IDENTIFICATION			
Operator	KERR-MCGEE OIL & GAS ONSHORE LP (WA)	Slot	SLOT#17 GUEST 28N-25HZ (2027'FWL & 2391'FSL, SEC.13)
Area	COLORADO	Well	GUEST 28N-25HZ
Field	WELD COUNTY (UTM/TRUE NORTH)	Wellbore	GUEST 28N-25HZ AWB
Facility	SEC.13-T2N-R65W		

WELLPATH DATA (191 stations)												
MD [ft]	Inclination [°]	Azimuth [°]	TVD [ft]	Vert Sect [ft]	North [ft]	East [ft]	Grid East [US ft]	Grid North [US ft]	Latitude	Longitude	DLS [°/100ft]	Comments
7431.00	90.370	177.830	6891.46	-113.36	120.12	376.53	1748585.43	14577252.73	40°08'17.114"N	104°36'46.703"W	8.79	LANDING (2511'FSL & 2404'FWL, SEC.13) 40.1380872 -104.6129730
7518.00	89.820	177.330	6891.31	-26.38	33.20	380.21	1748589.48	14577165.86	40°08'16.255"N	104°36'46.656"W	0.85	
7606.00	89.320	176.900	6891.97	61.57	-54.68	384.64	1748594.29	14577078.02	40°08'15.387"N	104°36'46.599"W	0.75	
7693.00	89.140	178.210	6893.14	148.53	-141.59	388.35	1748598.38	14576991.16	40°08'14.528"N	104°36'46.551"W	1.52	
7781.00	90.000	178.210	6893.80	238.52	-229.55	391.10	1748601.51	14576903.26	40°08'13.659"N	104°36'46.515"W	0.98	
7868.00	90.280	180.110	6893.59	323.52	-316.53	392.37	1748603.16	14576816.31	40°08'12.799"N	104°36'46.499"W	2.21	
7956.00	89.350	179.800	6893.87	411.50	-404.53	392.44	1748603.61	14576728.35	40°08'11.929"N	104°36'46.498"W	1.11	
8043.00	88.300	179.830	6895.66	498.47	-491.51	392.72	1748604.27	14576641.40	40°08'11.070"N	104°36'46.495"W	1.21	
8131.00	88.090	179.170	6898.43	586.42	-579.46	393.49	1748605.42	14576553.49	40°08'10.201"N	104°36'46.485"W	0.79	
8218.00	88.150	179.020	6901.28	673.38	-666.41	394.86	1748607.17	14576466.59	40°08'09.341"N	104°36'46.467"W	0.19	
8306.00	88.060	178.050	6904.19	761.33	-754.33	397.11	1748609.80	14576378.71	40°08'08.473"N	104°36'46.438"W	1.11	
8393.00	88.240	177.660	6907.00	848.26	-841.22	400.36	1748613.43	14576291.87	40°08'07.614"N	104°36'46.396"W	0.49	
8481.00	89.940	179.330	6908.40	936.24	-929.17	402.68	1748616.12	14576203.96	40°08'06.745"N	104°36'46.367"W	2.71	
8568.00	89.750	179.170	6908.64	1023.24	-1016.17	403.81	1748617.63	14576117.01	40°08'05.885"N	104°36'46.352"W	0.29	
8655.00	89.450	178.670	6909.24	1110.24	-1103.15	405.45	1748619.65	14576030.07	40°08'05.026"N	104°36'46.331"W	0.67	
8743.00	89.420	178.280	6910.11	1198.23	-1191.11	407.80	1748622.37	14575942.15	40°08'04.156"N	104°36'46.301"W	0.44	
8830.00	90.150	178.220	6910.44	1285.22	-1278.07	410.45	1748625.40	14575855.23	40°08'03.297"N	104°36'46.266"W	0.84	
8918.00	87.570	178.330	6912.19	1373.19	-1366.01	413.10	1748628.43	14575767.35	40°08'02.428"N	104°36'46.232"W	2.93	
9005.00	87.350	178.470	6916.04	1460.10	-1452.89	415.53	1748631.24	14575680.51	40°08'01.569"N	104°36'46.201"W	0.30	
9093.00	87.070	179.500	6920.33	1548.00	-1540.77	417.08	1748633.17	14575592.67	40°08'00.701"N	104°36'46.181"W	1.21	
9180.00	87.720	180.330	6924.28	1634.89	-1627.68	417.21	1748633.68	14575505.80	40°07'59.842"N	104°36'46.179"W	1.21	
9268.00	88.860	180.650	6926.91	1722.82	-1715.63	416.46	1748633.31	14575417.87	40°07'58.973"N	104°36'46.189"W	1.35	
9355.00	88.340	180.270	6929.03	1809.77	-1802.60	415.76	1748632.99	14575330.93	40°07'58.113"N	104°36'46.198"W	0.74	
9443.00	88.890	180.590	6931.16	1897.71	-1890.58	415.10	1748632.71	14575243.00	40°07'57.244"N	104°36'46.207"W	0.72	
9530.00	89.940	182.470	6932.05	1984.62	-1977.53	412.78	1748630.76	14575156.06	40°07'56.385"N	104°36'46.237"W	2.47	
9617.00	89.450	182.940	6932.51	2071.43	-2064.44	408.67	1748627.04	14575069.18	40°07'55.526"N	104°36'46.290"W	0.78	
9705.00	88.490	182.450	6934.09	2159.23	-2152.32	404.54	1748623.28	14574981.31	40°07'54.658"N	104°36'46.343"W	1.22	
9792.00	90.620	181.240	6934.77	2246.11	-2239.27	401.74	1748620.86	14574894.38	40°07'53.798"N	104°36'46.379"W	2.82	
9880.00	90.310	180.810	6934.06	2334.05	-2327.25	400.16	1748619.67	14574806.43	40°07'52.929"N	104°36'46.399"W	0.60	
9968.00	90.310	181.270	6933.58	2421.99	-2415.24	398.57	1748618.45	14574718.47	40°07'52.059"N	104°36'46.420"W	0.52	

REFERENCE WELLPATH IDENTIFICATION			
Operator	KERR-MCGEE OIL & GAS ONSHORE LP (WA)	Slot	SLOT#17 GUEST 28N-25HZ (2027'FWL & 2391'FSL, SEC.13)
Area	COLORADO	Well	GUEST 28N-25HZ
Field	WELD COUNTY (UTM/TRUE NORTH)	Wellbore	GUEST 28N-25HZ AWB
Facility	SEC.13-T2N-R65W		

WELLPATH DATA (191 stations)												
MD [ft]	Inclination [°]	Azimuth [°]	TVD [ft]	Vert Sect [ft]	North [ft]	East [ft]	Grid East [US ft]	Grid North [US ft]	Latitude	Longitude	DLS [°/100ft]	Comments
10055.00	91.420	178.750	6932.27	2508.96	-2502.22	398.55	1748618.82	14574631.52	40°07'51.200"N	104°36'46.420"W	3.16	
10143.00	91.170	178.340	6930.28	2596.93	-2590.17	400.78	1748621.43	14574543.62	40°07'50.331"N	104°36'46.391"W	0.55	
10231.00	91.260	178.110	6928.41	2684.91	-2678.10	403.51	1748624.54	14574455.73	40°07'49.462"N	104°36'46.356"W	0.28	
10318.00	90.860	177.580	6926.80	2771.87	-2765.03	406.78	1748628.18	14574368.86	40°07'48.603"N	104°36'46.314"W	0.76	
10406.00	90.710	177.540	6925.60	2859.84	-2852.94	410.53	1748632.31	14574280.99	40°07'47.734"N	104°36'46.266"W	0.18	
10493.00	90.340	177.070	6924.80	2946.80	-2939.84	414.62	1748636.77	14574194.15	40°07'46.875"N	104°36'46.213"W	0.69	
10581.00	89.880	176.580	6924.63	3034.74	-3027.70	419.49	1748642.03	14574106.34	40°07'46.007"N	104°36'46.150"W	0.76	
10668.00	89.660	176.370	6924.98	3121.65	-3114.54	424.84	1748647.75	14574019.56	40°07'45.149"N	104°36'46.082"W	0.35	
10756.00	89.450	177.230	6925.66	3209.58	-3202.40	429.75	1748653.04	14573931.76	40°07'44.281"N	104°36'46.018"W	1.01	
10843.00	88.770	179.250	6927.01	3296.56	-3289.34	432.42	1748656.09	14573844.86	40°07'43.421"N	104°36'45.984"W	2.45	
10931.00	88.330	178.560	6929.24	3384.53	-3377.30	434.10	1748658.15	14573756.95	40°07'42.552"N	104°36'45.962"W	0.93	
11018.00	87.170	177.010	6932.66	3471.44	-3464.16	437.46	1748661.89	14573670.13	40°07'41.694"N	104°36'45.919"W	2.22	
11106.00	88.770	177.570	6935.77	3559.35	-3552.00	441.62	1748666.42	14573582.34	40°07'40.826"N	104°36'45.866"W	1.93	
11193.00	88.670	178.990	6937.72	3646.32	-3638.94	444.23	1748669.41	14573495.45	40°07'39.967"N	104°36'45.832"W	1.64	
11281.00	88.890	178.870	6939.59	3734.30	-3726.90	445.87	1748671.43	14573407.53	40°07'39.097"N	104°36'45.811"W	0.28	
11369.00	88.920	178.080	6941.27	3822.28	-3814.86	448.22	1748674.16	14573319.62	40°07'38.228"N	104°36'45.781"W	0.90	
11456.00	88.120	177.460	6943.52	3909.23	-3901.76	451.60	1748677.92	14573232.77	40°07'37.369"N	104°36'45.737"W	1.16	
11543.00	87.350	178.580	6946.96	3996.15	-3988.64	454.60	1748681.30	14573145.94	40°07'36.511"N	104°36'45.699"W	1.56	
11631.00	88.190	180.500	6950.38	4084.07	-4076.56	455.31	1748682.38	14573058.05	40°07'35.642"N	104°36'45.690"W	2.38	
11719.00	89.750	180.090	6951.96	4172.03	-4164.55	454.86	1748682.31	14572970.10	40°07'34.773"N	104°36'45.695"W	1.83	
11806.00	88.700	179.800	6953.14	4259.01	-4251.54	454.94	1748682.77	14572883.15	40°07'33.913"N	104°36'45.694"W	1.25	
11894.00	90.460	179.580	6953.79	4346.99	-4339.53	455.42	1748683.63	14572795.19	40°07'33.043"N	104°36'45.688"W	2.02	
11981.00	90.370	178.950	6953.16	4433.99	-4426.52	456.53	1748685.12	14572708.24	40°07'32.184"N	104°36'45.674"W	0.73	
12069.00	90.340	178.940	6952.61	4521.99	-4514.50	458.15	1748687.12	14572620.30	40°07'31.314"N	104°36'45.653"W	0.04	
12156.00	90.490	178.430	6951.98	4608.99	-4601.48	460.15	1748689.50	14572533.37	40°07'30.455"N	104°36'45.627"W	0.61	
12244.00	89.140	178.120	6952.26	4696.98	-4689.43	462.80	1748692.53	14572445.46	40°07'29.586"N	104°36'45.593"W	1.57	
12331.00	89.780	177.550	6953.08	4783.95	-4776.37	466.08	1748696.19	14572358.57	40°07'28.726"N	104°36'45.551"W	0.99	
12419.00	89.350	177.640	6953.75	4871.93	-4864.29	469.78	1748700.26	14572270.70	40°07'27.858"N	104°36'45.504"W	0.50	
12506.00	89.600	178.940	6954.55	4958.91	-4951.24	472.37	1748703.23	14572183.79	40°07'26.998"N	104°36'45.470"W	1.52	
12593.00	88.120	178.460	6956.28	5045.89	-5038.20	474.35	1748705.58	14572096.88	40°07'26.139"N	104°36'45.445"W	1.79	

REFERENCE WELLPATH IDENTIFICATION			
Operator	KERR-MCGEE OIL & GAS ONSHORE LP (WA)	Slot	SLOT#17 GUEST 28N-25HZ (2027'FWL & 2391'FSL, SEC.13)
Area	COLORADO	Well	GUEST 28N-25HZ
Field	WELD COUNTY (UTM/TRUE NORTH)	Wellbore	GUEST 28N-25HZ AWB
Facility	SEC.13-T2N-R65W		

WELLPATH DATA (191 stations) † = interpolated/extrapolated station												
MD (ft)	Inclination (°)	Azimuth (°)	TVD (ft)	Vert Sect (ft)	North (ft)	East (ft)	Grid East (US ft)	Grid North (US ft)	Latitude	Longitude	DLS (°/100ft)	Comments
12680.00	88.860	177.710	6958.57	5132.85	-5125.12	477.25	1748708.86	14572010.01	40°07'25.280"N	104°36'45.407"W	1.21	
12768.00	87.260	179.370	6961.55	5220.79	-5213.04	479.49	1748711.49	14571922.14	40°07'24.411"N	104°36'45.379"W	2.62	
12855.00	87.780	179.100	6965.32	5307.71	-5299.95	480.65	1748713.02	14571835.27	40°07'23.552"N	104°36'45.364"W	0.67	
12943.00	87.380	178.780	6969.03	5395.63	-5387.85	482.28	1748715.03	14571747.40	40°07'22.684"N	104°36'45.343"W	0.58	
13030.00	87.660	181.250	6972.80	5482.53	-5474.76	482.26	1748715.38	14571660.52	40°07'21.825"N	104°36'45.343"W	2.85	
13118.00	89.600	180.900	6974.90	5570.44	-5562.72	480.61	1748714.12	14571572.60	40°07'20.956"N	104°36'45.364"W	2.24	
13206.00	88.890	179.310	6976.06	5658.41	-5650.71	480.45	1748714.34	14571484.64	40°07'20.086"N	104°36'45.366"W	1.98	
13293.00	88.770	178.900	6977.84	5745.39	-5737.68	481.80	1748716.07	14571397.71	40°07'19.227"N	104°36'45.349"W	0.49	
13380.00	89.080	178.460	6979.47	5832.38	-5824.64	483.81	1748718.45	14571310.79	40°07'18.367"N	104°36'45.323"W	0.62	
13468.00	89.140	178.060	6980.84	5920.36	-5912.59	486.48	1748721.50	14571222.89	40°07'17.498"N	104°36'45.289"W	0.46	
13555.00	89.110	178.130	6982.17	6007.34	-5999.53	489.37	1748724.77	14571136.00	40°07'16.639"N	104°36'45.252"W	0.09	
13643.00	90.000	178.250	6982.85	6095.33	-6087.48	492.15	1748727.93	14571048.09	40°07'15.770"N	104°36'45.216"W	1.02	
13730.00	89.480	176.520	6983.24	6182.29	-6174.39	496.12	1748732.28	14570961.24	40°07'14.911"N	104°36'45.165"W	2.08	
13817.00	89.230	176.030	6984.22	6269.19	-6261.20	501.77	1748738.30	14570874.49	40°07'14.053"N	104°36'45.092"W	0.63	
13904.00	89.010	177.680	6985.56	6356.11	-6348.05	506.54	1748743.45	14570787.69	40°07'13.195"N	104°36'45.031"W	1.91	
13991.00	88.370	180.170	6987.55	6443.08	-6435.01	508.18	1748745.46	14570700.77	40°07'12.336"N	104°36'45.010"W	2.95	
14079.00	88.150	180.610	6990.22	6531.02	-6522.97	507.58	1748745.24	14570612.85	40°07'11.466"N	104°36'45.017"W	0.56	
14166.00	88.550	180.440	6992.73	6617.95	-6609.93	506.78	1748744.82	14570525.92	40°07'10.607"N	104°36'45.028"W	0.50	
14254.00	88.860	180.250	6994.71	6705.90	-6697.90	506.25	1748744.67	14570437.98	40°07'09.738"N	104°36'45.034"W	0.41	
14341.00	87.970	179.310	6997.12	6792.86	-6784.87	506.59	1748745.38	14570351.05	40°07'08.878"N	104°36'45.030"W	1.49	
14429.00	88.830	180.240	6999.58	6880.81	-6872.83	506.93	1748746.11	14570263.12	40°07'08.009"N	104°36'45.026"W	1.44	
14516.00	88.300	180.540	7001.76	6967.76	-6959.80	506.34	1748745.90	14570176.18	40°07'07.150"N	104°36'45.033"W	0.70	
14604.00	92.400	179.840	7001.22	7055.72	-7047.78	506.05	1748745.99	14570088.24	40°07'06.280"N	104°36'45.037"W	4.73	
14691.00	93.060	179.540	6997.08	7142.61	-7134.68	506.52	1748746.83	14570001.38	40°07'05.421"N	104°36'45.031"W	0.83	
14763.00†	91.976	178.530	6993.91	7214.54	-7206.60	507.73	1748748.36	14569929.49	40°07'04.711"N	104°36'45.016"W	2.06	ENTERED RADIUS TOE (423'FSL & 2568'FWL SEC.24) 40.1179752 -104.6125043
14778.00	91.750	178.320	6993.43	7229.53	-7221.58	508.14	1748748.83	14569914.51	40°07'04.563"N	104°36'45.010"W	2.06	
14866.00	90.800	177.990	6991.47	7317.50	-7309.51	510.97	1748752.05	14569826.63	40°07'03.694"N	104°36'44.974"W	1.14	
14953.00	90.460	178.070	6990.51	7404.48	-7396.46	513.96	1748755.41	14569739.73	40°07'02.834"N	104°36'44.935"W	0.40	
15041.00	91.350	178.160	6989.12	7492.46	-7484.40	516.86	1748758.69	14569651.84	40°07'01.965"N	104°36'44.898"W	1.02	
15129.00	88.210	178.070	6989.46	7580.44	-7572.34	519.75	1748761.96	14569563.95	40°07'01.096"N	104°36'44.861"W	3.57	

REFERENCE WELLPATH IDENTIFICATION			
Operator	KERR-MCGEE OIL & GAS ONSHORE LP (WA)	Slot	SLOT#17 GUEST 28N-25HZ (2027'FWL & 2391'FSL, SEC.13)
Area	COLORADO	Well	GUEST 28N-25HZ
Field	WELD COUNTY (UTM/TRUE NORTH)	Wellbore	GUEST 28N-25HZ AWB
Facility	SEC.13-T2N-R65W		

WELLPATH DATA (191 stations)												
MD [ft]	Inclination [°]	Azimuth [°]	TVD [ft]	Vert Sect [ft]	North [ft]	East [ft]	Grid East [US ft]	Grid North [US ft]	Latitude	Longitude	DLS [°/100ft]	Comments
15217.00	88.340	177.770	6992.11	7668.38	-7660.24	522.94	1748765.53	14569476.10	40°07'00.228"N	104°36'44.820"W	0.37	
15305.00	88.460	177.700	6994.56	7756.33	-7748.14	526.42	1748769.39	14569388.25	40°06'59.359"N	104°36'44.775"W	0.16	
15392.00	88.490	177.460	6996.88	7843.27	-7835.03	530.09	1748773.44	14569301.41	40°06'58.500"N	104°36'44.728"W	0.28	
15479.00	88.890	177.410	6998.87	7930.22	-7921.92	533.99	1748777.71	14569214.57	40°06'57.642"N	104°36'44.678"W	0.46	
15567.00	90.550	177.670	6999.30	8018.18	-8009.83	537.76	1748781.86	14569126.71	40°06'56.773"N	104°36'44.629"W	1.91	
15654.00	91.020	177.810	6998.11	8105.16	-8096.76	541.19	1748785.67	14569039.83	40°06'55.914"N	104°36'44.585"W	0.56	
15742.00	91.200	177.790	6996.40	8193.12	-8184.68	544.57	1748789.43	14568951.96	40°06'55.045"N	104°36'44.542"W	0.21	
15829.00	92.690	179.710	6993.45	8280.06	-8271.60	546.47	1748791.70	14568865.08	40°06'54.186"N	104°36'44.517"W	2.79	
15917.00	92.220	179.610	6989.68	8367.98	-8359.52	546.99	1748792.60	14568777.20	40°06'53.317"N	104°36'44.510"W	0.55	
16004.00	91.690	179.400	6986.71	8454.92	-8446.46	547.74	1748793.73	14568690.29	40°06'52.458"N	104°36'44.501"W	0.66	End Run 1; LAST BHI MWD+IFR+SC SURVEY
16054.00	91.690	179.400	6985.24	8504.90	-8496.44	548.26	1748794.47	14568640.34	40°06'51.964"N	104°36'44.494"W	0.00	TOE (836'FNL & 2621'FWL, SEC.25) 40.1144345 -104.6123595, PTB

REFERENCE WELLPATH IDENTIFICATION			
Operator	KERR-MCGEE OIL & GAS ONSHORE LP (WA)	Slot	SLOT#17 GUEST 28N-25HZ (2027'FWL & 2391'FSL, SEC.13)
Area	COLORADO	Well	GUEST 28N-25HZ
Field	WELD COUNTY (UTM/TRUE NORTH)	Wellbore	GUEST 28N-25HZ AWB
Facility	SEC.13-T2N-R65W		

TARGETS								
Name	TVD [ft]	North [ft]	East [ft]	Grid East [US ft]	Grid North [US ft]	Latitude	Longitude	Shape
SEC.13-T2N-R65W	-9.00	0.51	-149.82	1748059.81	14577130.87	40°08'15.932"N	104°36'53.480"W	polygon
SEC.24-T2N-R65W	-9.00	0.51	-149.82	1748059.81	14577130.87	40°08'15.932"N	104°36'53.480"W	polygon
SEC.25-T2N-R65W	-9.00	0.51	-149.82	1748059.81	14577130.87	40°08'15.932"N	104°36'53.480"W	polygon
GUEST 28N-25HZ HEEL REV-1(2580'FSL & 2405'FWL,SEC.13)	6887.20	185.98	378.54	1748587.16	14577318.56	40°08'17.765"N	104°36'46.677"W	point
GUEST 28N-25HZ BHL REV-1(866'FNL & 2608'FWL,SEC.25)	7012.20	-8525.77	534.69	1748781.03	14568610.96	40°06'51.674"N	104°36'44.669"W	point
GUEST 28N-25HZ CIRCLE 1	7012.20	-7662.36	575.32	1748817.90	14569474.20	40°07'00.207"N	104°36'44.146"W	polygon
GUEST 28N-25HZ CIRCLE 2	7012.20	236.15	582.48	1748790.80	14577369.60	40°08'18.261"N	104°36'44.051"W	polygon
GUEST 28N-25HZ LANDBOX BOX	7012.20	0.00	0.00	1748209.57	14577131.02	40°08'15.927"N	104°36'51.551"W	polygon

WELLPATH COMPOSITION - Ref Wellbore: GUEST 28N-25HZ AWB Ref Wellpath: GUEST 28N-25HZ AWP				
Start MD [ft]	End MD [ft]	Positional Uncertainty Model	Log Name/Comment	Wellbore
17.00	1794.00	Custom APC_ISCWSA REV 2 MWD+IFR1 (approximation)	SDI MWD+IFR SURVEYS <140 - 1794>	GUEST 28N-25HZ AWB
1794.00	16004.00	Custom APC_ISCWSA REV 2 MWD+IFR1+SC (approximation)	BHI APC_ISCWSA REV 2 MWD+IFR1+SC <1894-16004>	GUEST 28N-25HZ AWB
16004.00	16054.00	Blind Drilling (std)	Projection to bit	GUEST 28N-25HZ AWB

REFERENCE WELLPATH IDENTIFICATION			
Operator	KERR-MCGEE OIL & GAS ONSHORE LP (WA)	Slot	SLOT#17 GUEST 28N-25HZ (2027'FWL & 2391'FSL, SEC.13)
Area	COLORADO	Well	GUEST 28N-25HZ
Field	WELD COUNTY (UTM/TRUE NORTH)	Wellbore	GUEST 28N-25HZ AWB
Facility	SEC.13-T2N-R65W		

WELLPATH COMMENTS				
MD [ft]	Inclination [°]	Azimuth [°]	TVD [ft]	Comment
140.00	0.300	346.790	140.00	FIRST SDI MWD+IFR SURVEY
1794.00	15.050	28.770	1767.86	LAST SDI MWD+IFR SURVEY
1890.00	14.656	28.300	1860.65	ENTERED LANDBOX (2655'FSL & 2149'FWL,SEC.13) 40.1384821 -104.6138787, ENTERED RADIUS HEEL (2655'FSL & 2149'FWL,SEC.13) 40.1384821 -104.6138787
1894.00	14.640	28.280	1864.52	FIRST BHI MWD+IFR+SC SURVEY
6280.00	7.477	184.405	6167.56	KOP
7024.00	56.105	178.347	6769.95	SSPG
7137.00	64.602	176.831	6827.21	NBRR
7310.00	79.361	177.363	6880.95	N470 B CK
7431.00	90.370	177.830	6891.46	LANDING (2511'FSL & 2404'FWL,SEC.13) 40.1380872 -104.6129730
14763.00	91.976	178.530	6993.91	ENTERED RADIUS TOE (423'FSL & 2568'FWL,SEC.24) 40.1179752 -104.6125043
16004.00	91.690	179.400	6986.71	LAST BHI MWD+IFR+SC SURVEY
16054.00	91.690	179.400	6985.24	TOE (836'FNL & 2621'FWL,SEC.25) 40.1144345 -104.6123595, PTB

SURVEY LOG COMMENTS				
MD [ft]	Inclination [°]	Azimuth [°]	TVD [ft]	Comment
1894.00	14.640	28.280	1864.52	Begin Run 1
16004.00	91.690	179.400	6986.71	End Run 1