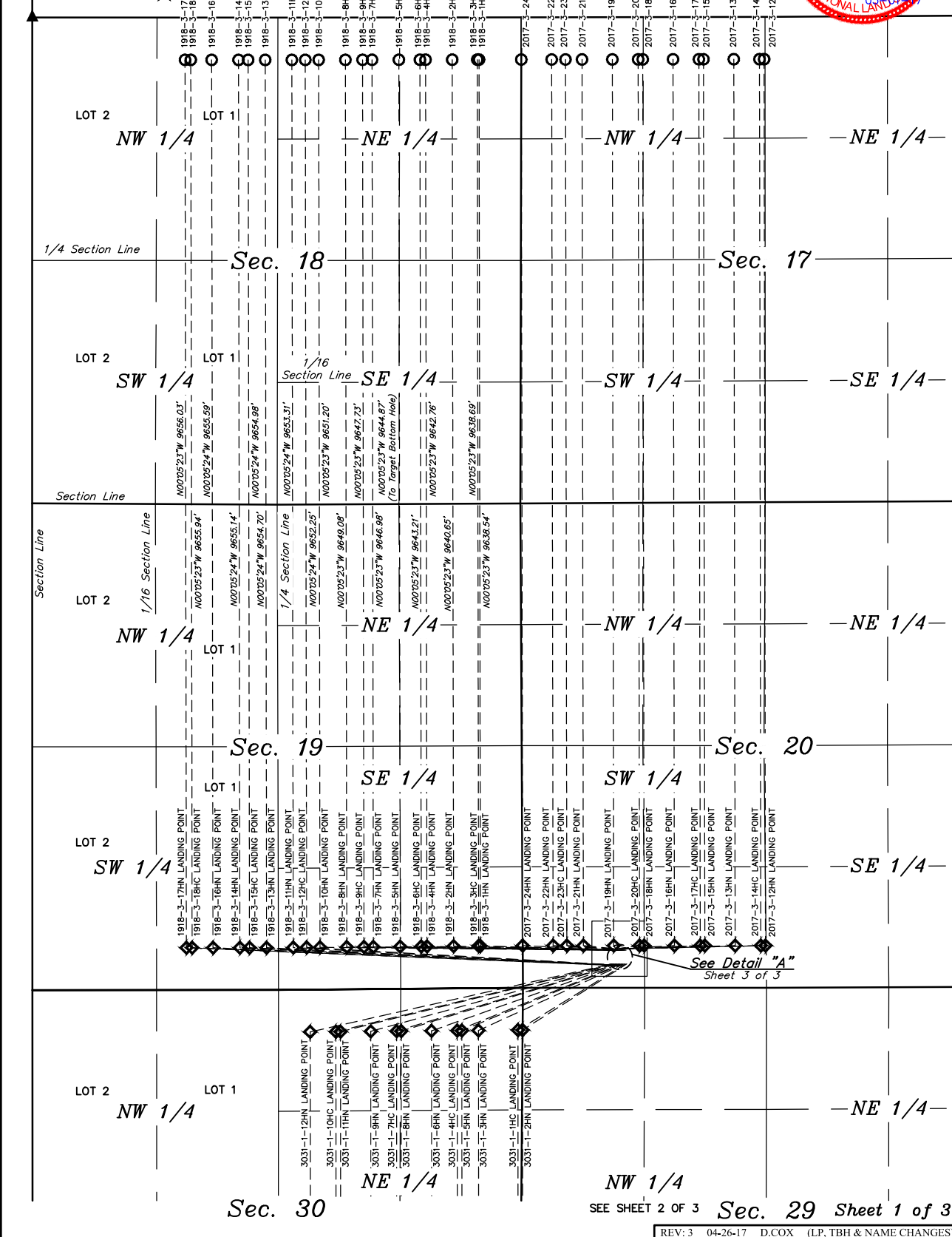


LEGEND:

- = WELLHEAD LOCATION.
- = TARGET BOTTOM HOLE.
- ◇ = LANDING POINT.

R
67
W

R
66
W



NOTES:

WARD PETROLEUM CORPORATION

BRIGHTON LAKES PAD
SW 1/4 SW 1/4, SECTION 20, T15S, R66W, 6th P.M.
ADAMS COUNTY, COLORADO

SURVEYED BY	DALLAS NIELSEN, N.P.	12-12-16	SCALE
DRAWN BY	K.B.	12-20-16	1" = 1000'
MULTI-WELL PLAN		FIGURE #5	



UELS, LLC
Corporate Office * 85 South 200 East
Vernal, UT 84078 * (435) 789-1017

**LEGEND:**

● = WELLHEAD LOCATION.

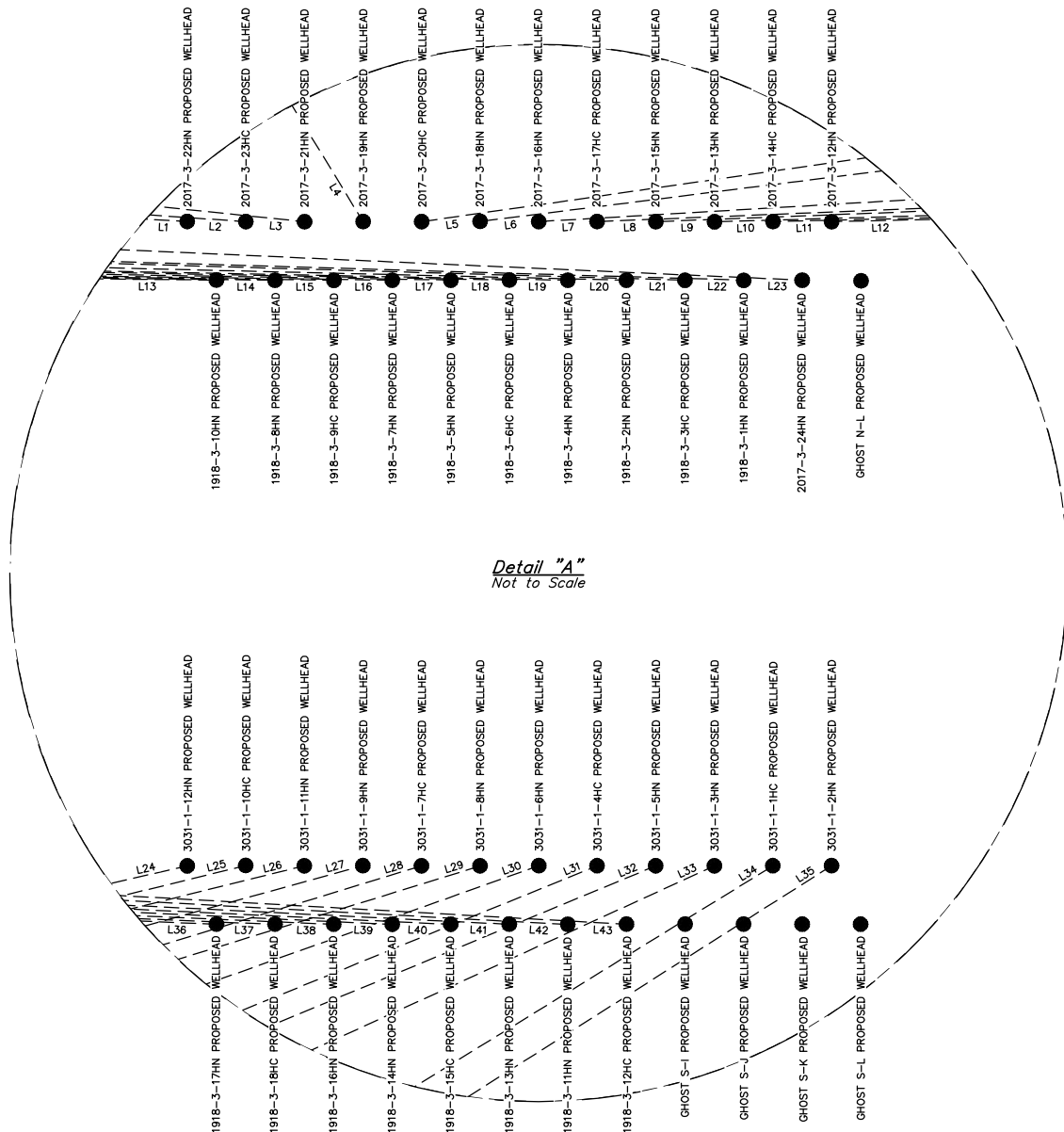


LINE TABLE		
LINE	DIRECTION	LENGTH
L1	N86°50'55"W	637.35'
L2	N85°59'57"W	502.63'
L3	N84°02'55"W	338.28'
L4	N31°28'31"W	41.03'
L5	N81°49'40"E	246.10'
L6	N82°51'30"E	280.79'
L7	N86°37'56"E	594.66'
L8	N87°40'25"E	859.36'
L9	N87°45'47"E	894.31'
L10	N88°20'44"E	1209.12'
L11	N88°38'47"E	1474.04'

LINE TABLE		
LINE	DIRECTION	LENGTH
L12	N88°40'37"E	1509.02'
L13	N89°26'31"W	3177.99'
L14	N89°20'18"W	2902.00'
L15	N89°15'44"W	2730.10'
L16	N89°13'08"W	2642.03'
L17	N89°04'01"W	2366.14'
L18	N88°55'17"W	2152.29'
L19	N88°52'54"W	2105.26'
L20	N88°38'06"W	1830.41'
L21	N88°19'38"W	1574.57'
L22	N88°18'59"W	1569.60'

LINE TABLE		
LINE	DIRECTION	LENGTH
L23	N87°26'49"W	1125.04'
L24	S77°16'43"W	3360.15'
L25	S76°14'32"W	3101.58'
L26	S76°05'46"W	3067.49'
L27	S74°34'57"W	2761.95'
L28	S73°01'34"W	2506.73'
L29	S72°47'59"W	2473.15'
L30	S70°24'50"W	2173.30'
L31	S67°50'11"W	1924.68'
L32	S67°26'56"W	1892.14'
L33	S65°24'47"W	1740.25'

LINE TABLE		
LINE	DIRECTION	LENGTH
L34	S58°19'23"W	1371.77'
L35	S57°33'22"W	1341.86'
L36	N87°38'04"W	4634.75'
L37	N87°36'32"W	4586.80'
L38	N87°29'27"W	4375.01'
L39	N87°19'08"W	4099.31'
L40	N87°15'27"W	4009.38'
L41	N87°08'01"W	3838.60'
L42	N86°53'16"W	3564.03'
L43	N86°44'56"W	3433.32'



Sheet 3 of 3

REV: 2 04-26-17 D.COX (RE-ORDER WELLS & NAME CHANGES)

NOTES:**WARD PETROLEUM CORPORATION**BRIGHTON LAKES PAD
SW 1/4 SW 1/4, SECTION 20, T1S, R66W, 6th P.M.
ADAMS COUNTY, COLORADOUELS, LLC
Corporate Office * 85 South 200 East
Vernal, UT 84078 * (435) 789-1017

SURVEYED BY	DALLAS NIELSEN, N.P.	12-12-16	SCALE
DRAWN BY	K.B.	01-17-17	1" = 1000'
MULTI-WELL PLAN		FIGURE #5	