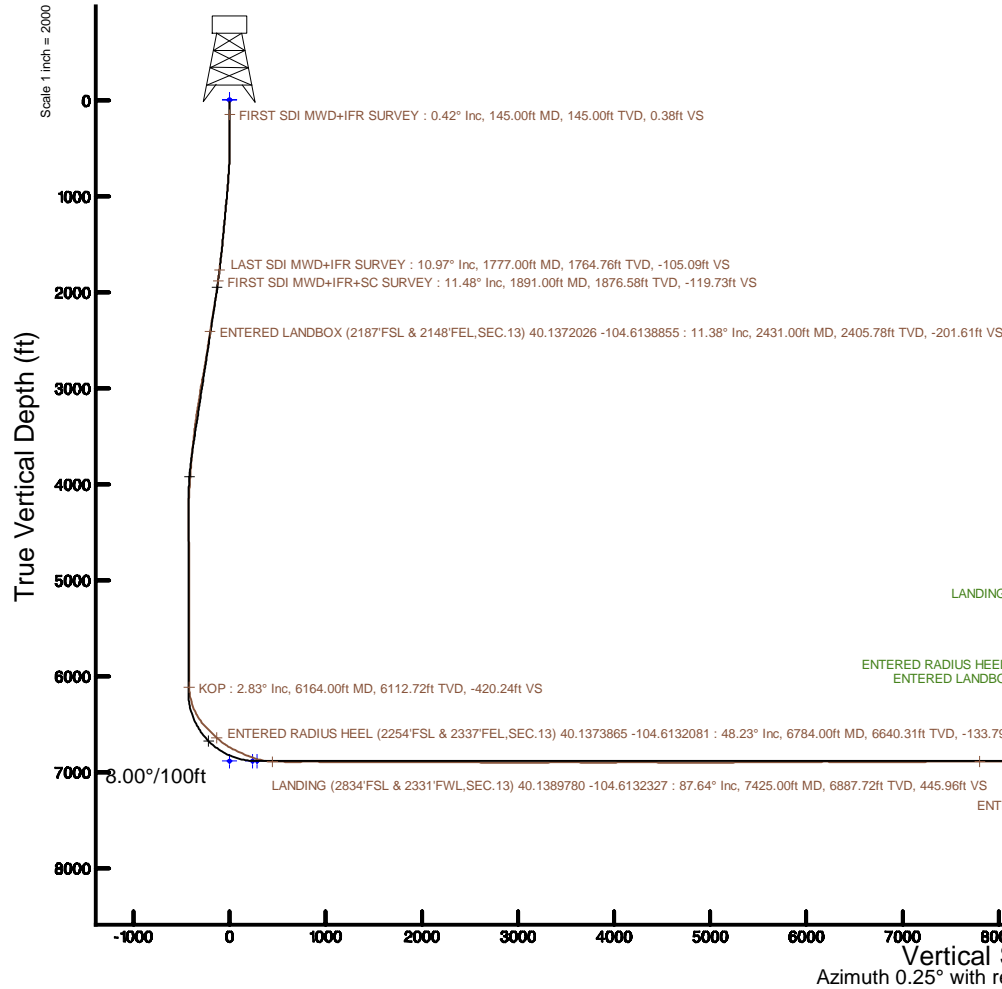
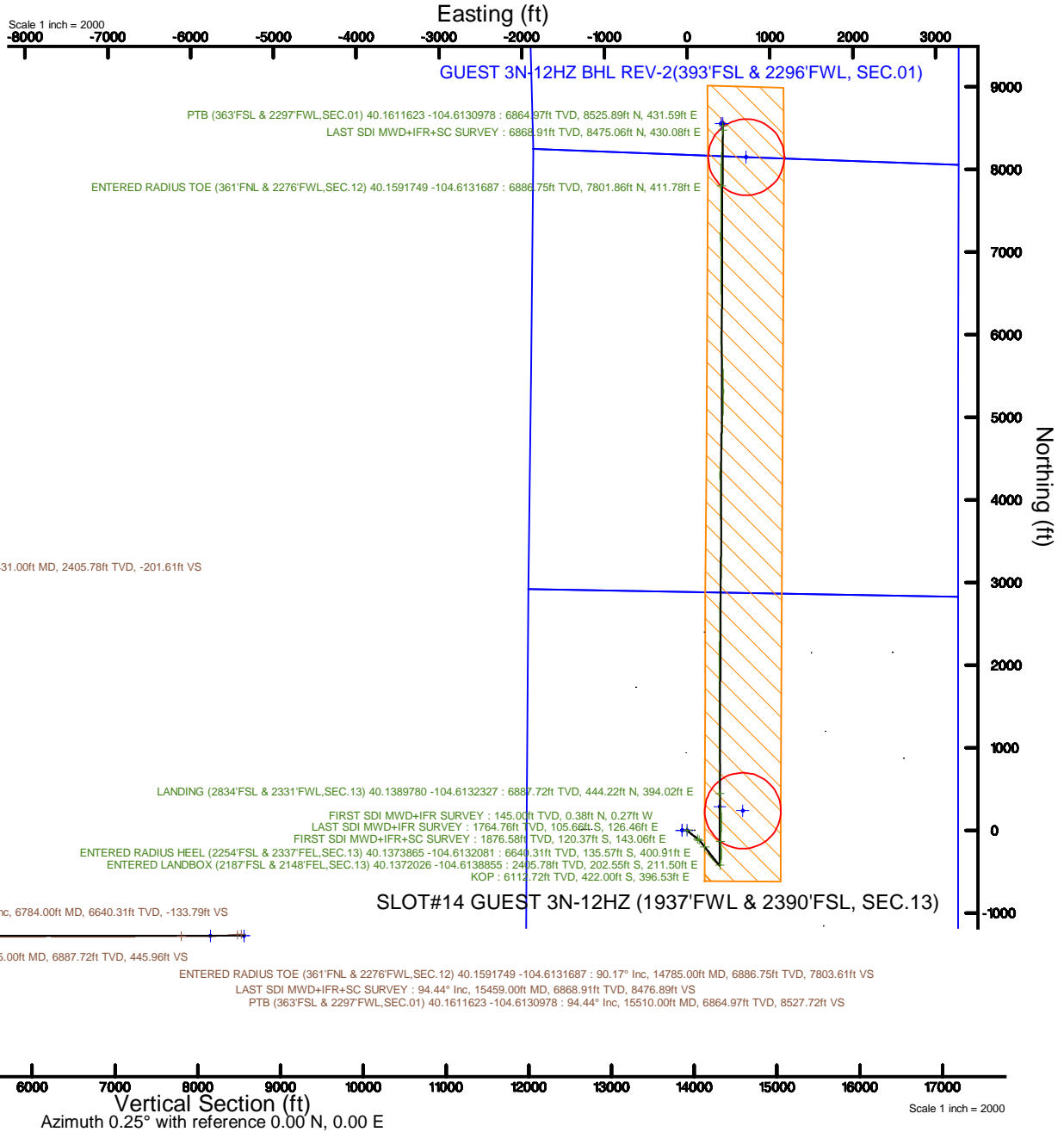


KERR-MCGEE OIL & GAS ONSHORE LP (WA)

Location: COLORADO Slot: SLOT#14 GUEST 3N-12HZ (1937'FWL & 2390'FSL, SEC.13)
 Field: WELD COUNTY (UTM/TRUE NORTH) Well: GUEST 3N-12HZ
 Facility: SEC.13-T2N-R65W Wellbore: GUEST 3N-12HZ PWB

Plot reference wellpath is GUEST 3N-12HZ Rev-C.0 PWP	Grid System: NAD83 / UTM Zone 13 North, US feet
True vertical depths are referenced to Xtreme 22 (17'RKB) (RKB)	* = Wellpath was transformed from a different geodetic datum
Measured depths are referenced to Xtreme 22 (17'RKB) (RKB)	North Reference: True north
Xtreme 22 (17'RKB) (RKB) to Mean Sea Level: 4889 feet	Scale: True distance
Mean Sea Level to Mud line (At Slot: SLOT#14 GUEST 3N-12HZ (1937'FWL & 2390'FSL, SEC.13)): 0 feet	Depths are in feet
Coordinates are in feet referenced to Slot	Created by: painsetr on 2017-03-17
	Database: WA_DEN_Anadarko_Defn



REFERENCE WELLPATH IDENTIFICATION			
Operator	KERR-MCGEE OIL & GAS ONSHORE LP (WA)	Slot	SLOT#14 GUEST 3N-12HZ (1937'FWL & 2390'FSL, SEC.13)
Area	COLORADO	Well	GUEST 3N-12HZ
Field	WELD COUNTY (UTM/TRUE NORTH)	Wellbore	GUEST 3N-12HZ AWB
Facility	SEC.13-T2N-R65W		

REPORT SETUP INFORMATION			
Projection System	NAD83 / UTM Zone 13 North, US feet	Software System	WellArchitect® 5.0
North Reference	True	User	Painsetr
Scale	0.999613	Report Generated	3/17/2017 at 7:55 AM
Convergence at slot	0.25° East	Database/Source file	WA_DEN_Anadarko_Defn/GUEST_3N-12HZ_AWP.xml

WELLPATH LOCATION						
	Local coordinates		Grid coordinates		Geographic coordinates	
	North[ft]	East[ft]	Easting[US ft]	Northing[US ft]	Latitude	Longitude
Slot Location	-2154.47	-2483.11	1748119.51	14577131.03	40°08'15.931"N	104°36'52.711"W
Facility Reference Pt			1750592.08	14579295.65	40°08'37.223"N	104°36'20.740"W
Field Reference Pt			1698235.31	14552047.82	40°04'09.600"N	104°47'36.000"W

WELLPATH DATUM			
Calculation method	Minimum curvature	Xtreme 22 (17'RKB) (RKB) to Facility Vertical Datum	4889.00ft
Horizontal Reference Pt	Slot	Xtreme 22 (17'RKB) (RKB) to Mean Sea Level	4889.00ft
Vertical Reference Pt	Xtreme 22 (17'RKB) (RKB)	Xtreme 22 (17'RKB) (RKB) to Mud Line at Slot (SLOT#14 GUEST 3N-12HZ (1937'FWL & 2390'FSL, SEC.13))	4889.00ft
MD Reference Pt	Xtreme 22 (17'RKB) (RKB)	Section Origin	N 0.00, E 0.00 ft
Field Vertical Reference	Mean Sea Level	Section Azimuth	2.90°

REFERENCE WELLPATH IDENTIFICATION			
Operator	KERR-MCGEE OIL & GAS ONSHORE LP (WA)	Slot	SLOT#14 GUEST 3N-12HZ (1937'FWL & 2390'FSL, SEC.13)
Area	COLORADO	Well	GUEST 3N-12HZ
Field	WELD COUNTY (UTM/TRUE NORTH)	Wellbore	GUEST 3N-12HZ AWB
Facility	SEC.13-T2N-R65W		

WELLPATH DATA (184 stations) † = interpolated/extrapolated station												
MD [ft]	Inclination [°]	Azimuth [°]	TVD [ft]	Vert Sect [ft]	North [ft]	East [ft]	Grid East [US ft]	Grid North [US ft]	Latitude	Longitude	DLS [°/100ft]	Comments
0.00†	0.000	325.000	0.00	0.00	0.00	0.00	1748119.51	14577131.03	40°08'15.931"N	104°36'52.711"W	0.00	
17.00	0.000	325.000	17.00	0.00	0.00	0.00	1748119.51	14577131.03	40°08'15.931"N	104°36'52.711"W	0.00	
145.00	0.420	325.000	145.00	0.37	0.38	-0.27	1748119.24	14577131.41	40°08'15.935"N	104°36'52.714"W	0.33	FIRST SDI MWD+IFR SURVEY
204.00	0.770	338.600	204.00	0.90	0.93	-0.54	1748118.97	14577131.96	40°08'15.940"N	104°36'52.718"W	0.64	
316.00	0.620	82.340	315.99	1.70	1.71	-0.21	1748119.29	14577132.74	40°08'15.948"N	104°36'52.714"W	0.98	
402.00	0.380	124.200	401.99	1.64	1.61	0.49	1748119.99	14577132.65	40°08'15.947"N	104°36'52.705"W	0.49	
487.00	0.450	162.370	486.99	1.18	1.14	0.82	1748120.33	14577132.17	40°08'15.942"N	104°36'52.700"W	0.33	
531.00	1.070	155.200	530.98	0.65	0.60	1.04	1748120.55	14577131.63	40°08'15.937"N	104°36'52.698"W	1.42	
620.00	2.550	155.560	619.93	-1.84	-1.96	2.21	1748121.73	14577129.08	40°08'15.912"N	104°36'52.683"W	1.66	
709.00	4.100	144.500	708.78	-6.10	-6.35	4.88	1748124.42	14577124.70	40°08'15.868"N	104°36'52.648"W	1.88	
795.00	5.460	136.760	794.48	-11.34	-11.83	9.47	1748129.03	14577119.24	40°08'15.814"N	104°36'52.589"W	1.75	
971.00	8.300	129.250	969.20	-24.68	-25.97	25.04	1748144.66	14577105.18	40°08'15.674"N	104°36'52.389"W	1.69	
1057.00	8.880	127.400	1054.24	-32.11	-33.93	35.12	1748154.77	14577097.26	40°08'15.596"N	104°36'52.259"W	0.75	
1146.00	8.910	127.150	1142.17	-39.88	-42.27	46.07	1748165.75	14577088.98	40°08'15.513"N	104°36'52.118"W	0.05	
1231.00	8.900	125.590	1226.14	-47.14	-50.07	56.67	1748176.38	14577081.23	40°08'15.436"N	104°36'51.981"W	0.28	
1316.00	8.710	128.570	1310.14	-54.45	-57.91	67.05	1748186.78	14577073.44	40°08'15.359"N	104°36'51.848"W	0.58	
1405.00	8.690	128.700	1398.12	-62.31	-66.31	77.56	1748197.33	14577065.08	40°08'15.276"N	104°36'51.712"W	0.03	
1494.00	9.140	127.760	1486.04	-70.28	-74.85	88.40	1748208.20	14577056.60	40°08'15.191"N	104°36'51.573"W	0.53	
1583.00	9.500	129.280	1573.87	-78.68	-83.83	99.67	1748219.51	14577047.67	40°08'15.103"N	104°36'51.428"W	0.49	
1671.00	10.160	127.820	1660.57	-87.43	-93.18	111.43	1748231.30	14577038.37	40°08'15.010"N	104°36'51.276"W	0.80	
1760.00	10.960	131.110	1748.07	-97.16	-103.56	124.00	1748243.91	14577028.05	40°08'14.908"N	104°36'51.114"W	1.13	
1777.00	10.970	129.760	1764.76	-99.13	-105.66	126.46	1748246.38	14577025.97	40°08'14.887"N	104°36'51.083"W	1.51	LAST SDI MWD+IFR SURVEY
1891.00	11.480	133.260	1876.58	-112.98	-120.37	143.06	1748263.04	14577011.33	40°08'14.742"N	104°36'50.869"W	0.75	FIRST SDI MWD+IFR+SC SURVEY
1979.00	10.900	131.430	1962.90	-123.84	-131.88	155.68	1748275.70	14576999.88	40°08'14.628"N	104°36'50.707"W	0.77	
2067.00	10.560	142.950	2049.37	-135.20	-143.82	166.78	1748286.85	14576987.99	40°08'14.510"N	104°36'50.564"W	2.46	
2154.00	12.290	146.530	2134.65	-148.77	-157.91	176.69	1748296.81	14576973.95	40°08'14.371"N	104°36'50.436"W	2.15	
2241.00	12.040	141.060	2219.70	-162.99	-172.69	187.50	1748307.68	14576959.22	40°08'14.224"N	104°36'50.297"W	1.36	
2329.00	11.640	137.440	2305.83	-176.05	-186.37	199.27	1748319.51	14576945.60	40°08'14.089"N	104°36'50.145"W	0.96	
2416.00	11.420	147.140	2391.08	-189.20	-200.07	209.88	1748330.18	14576931.95	40°08'13.954"N	104°36'50.009"W	2.24	
2431.00†	11.377	146.475	2405.78	-191.60	-202.55	211.50	1748331.81	14576929.48	40°08'13.929"N	104°36'49.988"W	0.92	ENTERED LANDBOX (2187'FSL & 2148'FEL, SEC.13) 40.1372026 -104.6138855

REFERENCE WELLPATH IDENTIFICATION			
Operator	KERR-MCGEE OIL & GAS ONSHORE LP (WA)	Slot	SLOT#14 GUEST 3N-12HZ (1937'FWL & 2390'FSL, SEC.13)
Area	COLORADO	Well	GUEST 3N-12HZ
Field	WELD COUNTY (UTM/TRUE NORTH)	Wellbore	GUEST 3N-12HZ AWB
Facility	SEC.13-T2N-R65W		

WELLPATH DATA (184 stations)												
MD [ft]	Inclination [°]	Azimuth [°]	TVD [ft]	Vert Sect [ft]	North [ft]	East [ft]	Grid East [US ft]	Grid North [US ft]	Latitude	Longitude	DLS [°/100ft]	Comments
2504.00	11.190	143.170	2477.37	-202.84	-214.22	219.73	1748340.08	14576917.85	40°08'13.814"N	104°36'49.882"W	0.92	
2591.00	10.190	138.900	2562.86	-214.87	-226.78	229.85	1748350.25	14576905.34	40°08'13.690"N	104°36'49.752"W	1.47	
2679.00	10.260	147.110	2649.47	-226.82	-239.22	239.22	1748359.67	14576892.94	40°08'13.567"N	104°36'49.631"W	1.66	
2766.00	11.360	148.200	2734.92	-240.15	-253.01	247.94	1748368.45	14576879.19	40°08'13.431"N	104°36'49.519"W	1.29	
2854.00	12.250	151.730	2821.06	-255.27	-268.60	256.93	1748377.50	14576863.65	40°08'13.277"N	104°36'49.403"W	1.30	
2941.00	12.010	150.020	2906.12	-270.77	-284.57	265.83	1748386.47	14576847.73	40°08'13.119"N	104°36'49.288"W	0.50	
3029.00	11.410	148.380	2992.29	-285.63	-299.91	274.96	1748395.67	14576832.43	40°08'12.967"N	104°36'49.171"W	0.78	
3116.00	10.740	146.650	3077.67	-299.26	-314.01	283.93	1748404.69	14576818.37	40°08'12.828"N	104°36'49.055"W	0.86	
3204.00	11.630	143.490	3164.00	-312.72	-327.99	293.72	1748414.53	14576804.44	40°08'12.690"N	104°36'48.929"W	1.23	
3291.00	10.930	140.610	3249.32	-325.60	-341.41	304.17	1748425.04	14576791.07	40°08'12.557"N	104°36'48.795"W	1.03	
3379.00	11.480	135.930	3335.64	-337.75	-354.15	315.55	1748436.48	14576778.38	40°08'12.431"N	104°36'48.648"W	1.21	
3466.00	10.120	130.460	3421.10	-348.32	-365.34	327.39	1748448.36	14576767.26	40°08'12.321"N	104°36'48.496"W	1.96	
3553.00	9.900	130.080	3506.78	-357.50	-375.11	338.93	1748459.93	14576757.54	40°08'12.224"N	104°36'48.347"W	0.26	
3641.00	9.570	129.720	3593.51	-366.45	-384.66	350.35	1748471.39	14576748.05	40°08'12.130"N	104°36'48.200"W	0.38	
3754.00	7.630	123.600	3705.24	-375.91	-394.81	363.82	1748484.90	14576737.95	40°08'12.029"N	104°36'48.027"W	1.90	
3842.00	7.060	128.630	3792.51	-382.05	-401.42	372.91	1748494.02	14576731.39	40°08'11.964"N	104°36'47.910"W	0.98	
3929.00	6.370	122.210	3878.92	-387.54	-407.33	381.17	1748502.30	14576725.51	40°08'11.906"N	104°36'47.803"W	1.17	
4016.00	5.900	137.230	3965.42	-393.03	-413.19	388.29	1748509.44	14576719.69	40°08'11.848"N	104°36'47.712"W	1.92	
4104.00	4.580	151.470	4053.06	-399.19	-419.59	393.04	1748514.22	14576713.31	40°08'11.784"N	104°36'47.650"W	2.09	
4191.00	2.770	160.860	4139.88	-404.10	-424.63	395.39	1748516.59	14576708.28	40°08'11.735"N	104°36'47.620"W	2.19	
4278.00	1.620	109.870	4226.82	-406.41	-427.04	397.24	1748518.44	14576705.89	40°08'11.711"N	104°36'47.596"W	2.48	
4366.00	0.340	79.430	4314.80	-406.71	-427.41	398.66	1748519.87	14576705.52	40°08'11.707"N	104°36'47.578"W	1.52	
4453.00	0.530	60.310	4401.80	-406.43	-427.17	399.27	1748520.47	14576705.77	40°08'11.710"N	104°36'47.570"W	0.27	
4541.00	0.830	38.700	4489.80	-405.70	-426.47	400.02	1748521.22	14576706.47	40°08'11.717"N	104°36'47.561"W	0.44	
4628.00	1.100	31.210	4576.78	-404.45	-425.26	400.85	1748522.04	14576707.68	40°08'11.729"N	104°36'47.550"W	0.34	
4715.00	1.050	298.750	4663.77	-403.37	-424.16	400.58	1748521.77	14576708.77	40°08'11.739"N	104°36'47.553"W	1.78	
4803.00	0.780	244.980	4751.76	-403.30	-424.03	399.33	1748520.52	14576708.90	40°08'11.741"N	104°36'47.569"W	0.98	
4890.00	0.250	287.350	4838.76	-403.53	-424.22	398.61	1748519.80	14576708.71	40°08'11.739"N	104°36'47.579"W	0.71	
4978.00	0.190	330.300	4926.76	-403.36	-424.04	398.36	1748519.55	14576708.89	40°08'11.741"N	104°36'47.582"W	0.19	
5065.00	0.290	312.960	5013.76	-403.09	-423.76	398.12	1748519.31	14576709.16	40°08'11.743"N	104°36'47.585"W	0.14	

REFERENCE WELLPATH IDENTIFICATION			
Operator	KERR-MCGEE OIL & GAS ONSHORE LP (WA)	Slot	SLOT#14 GUEST 3N-12HZ (1937'FWL & 2390'FSL, SEC.13)
Area	COLORADO	Well	GUEST 3N-12HZ
Field	WELD COUNTY (UTM/TRUE NORTH)	Wellbore	GUEST 3N-12HZ AWB
Facility	SEC.13-T2N-R65W		

WELLPATH DATA (184 stations) † = interpolated/extrapolated station												
MD [ft]	Inclination [°]	Azimuth [°]	TVD [ft]	Vert Sect [ft]	North [ft]	East [ft]	Grid East [US ft]	Grid North [US ft]	Latitude	Longitude	DLS [°/100ft]	Comments
5153.00	0.430	318.400	5101.76	-402.71	-423.36	397.74	1748518.93	14576709.56	40°08'11.747"N	104°36'47.590"W	0.16	
5240.00	0.820	342.330	5188.75	-401.90	-422.53	397.34	1748518.52	14576710.39	40°08'11.756"N	104°36'47.595"W	0.53	
5328.00	0.150	154.230	5276.75	-401.41	-422.03	397.19	1748518.38	14576710.89	40°08'11.760"N	104°36'47.597"W	1.10	
5416.00	0.110	49.870	5364.75	-401.45	-422.08	397.31	1748518.49	14576710.84	40°08'11.760"N	104°36'47.596"W	0.24	
5503.00	0.560	351.060	5451.75	-400.98	-421.61	397.31	1748518.49	14576711.31	40°08'11.765"N	104°36'47.596"W	0.59	
5590.00	0.280	261.220	5538.75	-400.61	-421.22	397.03	1748518.21	14576711.70	40°08'11.768"N	104°36'47.599"W	0.72	
5678.00	0.150	210.460	5626.75	-400.75	-421.35	396.76	1748517.94	14576711.57	40°08'11.767"N	104°36'47.603"W	0.25	
5765.00	0.220	190.370	5713.75	-401.02	-421.61	396.67	1748517.85	14576711.31	40°08'11.765"N	104°36'47.604"W	0.11	
5852.00	0.200	233.050	5800.74	-401.28	-421.87	396.52	1748517.70	14576711.05	40°08'11.762"N	104°36'47.606"W	0.18	
5940.00	0.230	190.450	5888.74	-401.56	-422.13	396.37	1748517.55	14576710.78	40°08'11.759"N	104°36'47.608"W	0.18	
6028.00	0.410	182.100	5976.74	-402.05	-422.62	396.32	1748517.51	14576710.29	40°08'11.755"N	104°36'47.608"W	0.21	
6115.00	0.240	161.160	6063.74	-402.53	-423.11	396.37	1748517.56	14576709.81	40°08'11.750"N	104°36'47.608"W	0.24	
6164.00†	2.826	5.811	6112.72	-401.41	-422.00	396.53	1748517.71	14576710.92	40°08'11.761"N	104°36'47.606"W	6.22	KOP
6203.00	5.250	4.940	6151.62	-398.67	-419.27	396.78	1748517.95	14576713.65	40°08'11.788"N	104°36'47.602"W	6.22	
6290.00	14.290	10.320	6237.27	-384.02	-404.71	399.05	1748520.16	14576728.21	40°08'11.932"N	104°36'47.573"W	10.43	
6377.00	20.460	9.950	6320.26	-358.25	-379.14	403.60	1748524.60	14576753.79	40°08'12.184"N	104°36'47.514"W	7.09	
6465.00	28.250	7.480	6400.37	-322.17	-343.29	408.98	1748529.82	14576789.65	40°08'12.539"N	104°36'47.445"W	8.93	
6552.00	38.870	359.840	6472.80	-274.23	-295.42	411.59	1748532.22	14576837.52	40°08'13.012"N	104°36'47.412"W	13.12	
6640.00	44.440	355.570	6538.54	-216.04	-237.03	409.13	1748529.51	14576895.87	40°08'13.589"N	104°36'47.443"W	7.10	
6727.00	44.120	353.450	6600.83	-155.96	-176.58	403.33	1748523.44	14576956.27	40°08'14.186"N	104°36'47.518"W	1.74	
6784.00†	48.230	359.584	6640.31	-115.13	-135.57	400.91	1748520.85	14576997.25	40°08'14.591"N	104°36'47.549"W	10.59	ENTERED RADIUS HEEL (2254'FSL & 2337'FEL, SEC.13) 40.1373865 -104.6132081
6815.00	50.590	2.590	6660.48	-91.61	-112.04	401.36	1748521.20	14577020.77	40°08'14.824"N	104°36'47.543"W	10.59	
6903.00	56.200	5.430	6712.94	-21.02	-41.62	406.37	1748525.90	14577091.19	40°08'15.520"N	104°36'47.479"W	6.88	
6990.00	62.620	2.710	6757.20	53.81	33.04	411.62	1748530.82	14577165.84	40°08'16.257"N	104°36'47.411"W	7.85	
7077.00	66.730	358.050	6794.42	132.32	111.63	412.09	1748530.95	14577244.40	40°08'17.034"N	104°36'47.405"W	6.76	
7165.00	67.760	356.940	6828.46	213.11	192.70	408.54	1748527.05	14577325.43	40°08'17.835"N	104°36'47.451"W	1.65	
7252.00	74.100	355.580	6856.87	294.74	274.71	403.16	1748521.32	14577407.38	40°08'18.646"N	104°36'47.520"W	7.44	
7340.00	78.660	355.960	6877.59	379.58	359.98	396.85	1748514.65	14577492.58	40°08'19.488"N	104°36'47.601"W	5.20	
7425.00†	87.642	0.154	6887.72	463.57	444.22	394.02	1748511.45	14577576.78	40°08'20.321"N	104°36'47.638"W	11.65	LANDING (2834'FSL & 2331'FWL, SEC.13) 40.1389780 -104.6132327
7428.00	87.960	0.300	6887.83	466.56	447.22	394.04	1748511.45	14577579.78	40°08'20.350"N	104°36'47.637"W	11.65	

REFERENCE WELLPATH IDENTIFICATION			
Operator	KERR-MCGEE OIL & GAS ONSHORE LP (WA)	Slot	SLOT#14 GUEST 3N-12HZ (1937'FWL & 2390'FSL, SEC.13)
Area	COLORADO	Well	GUEST 3N-12HZ
Field	WELD COUNTY (UTM/TRUE NORTH)	Wellbore	GUEST 3N-12HZ AWB
Facility	SEC.13-T2N-R65W		

WELLPATH DATA (184 stations)

MD [ft]	Inclination [°]	Azimuth [°]	TVD [ft]	Vert Sect [ft]	North [ft]	East [ft]	Grid East [US ft]	Grid North [US ft]	Latitude	Longitude	DLS [°/100ft]	Comments
7515.00	89.450	0.010	6889.80	553.44	534.19	394.27	1748511.31	14577666.72	40°08'21.210"N	104°36'47.634"W	1.74	
7603.00	90.000	359.850	6890.22	641.32	622.19	394.16	1748510.82	14577754.68	40°08'22.079"N	104°36'47.636"W	0.65	
7690.00	90.060	0.350	6890.17	728.22	709.19	394.32	1748510.60	14577841.65	40°08'22.939"N	104°36'47.634"W	0.58	
7778.00	90.860	359.650	6889.47	816.10	797.18	394.32	1748510.22	14577929.61	40°08'23.809"N	104°36'47.634"W	1.21	
7865.00	89.140	359.180	6889.47	902.94	884.18	393.43	1748508.95	14578016.56	40°08'24.668"N	104°36'47.645"W	2.05	
7953.00	88.830	359.090	6891.03	990.73	972.15	392.10	1748507.24	14578104.50	40°08'25.538"N	104°36'47.662"W	0.37	
8040.00	88.520	358.770	6893.04	1077.50	1059.11	390.47	1748505.24	14578191.41	40°08'26.397"N	104°36'47.683"W	0.51	
8128.00	89.660	359.350	6894.44	1165.29	1147.09	389.03	1748503.42	14578279.35	40°08'27.267"N	104°36'47.702"W	1.45	
8215.00	89.780	0.210	6894.86	1252.16	1234.09	388.70	1748502.71	14578366.31	40°08'28.126"N	104°36'47.706"W	1.00	
8303.00	89.780	359.770	6895.20	1340.04	1322.09	388.68	1748502.31	14578454.27	40°08'28.996"N	104°36'47.706"W	0.50	
8390.00	89.820	0.560	6895.50	1426.94	1409.08	388.93	1748502.18	14578541.24	40°08'29.856"N	104°36'47.703"W	0.91	
8478.00	89.780	0.120	6895.81	1514.86	1497.08	389.45	1748502.32	14578629.20	40°08'30.725"N	104°36'47.696"W	0.50	
8565.00	90.220	1.170	6895.81	1601.79	1584.07	390.43	1748502.93	14578716.17	40°08'31.585"N	104°36'47.684"W	1.31	
8653.00	90.250	0.990	6895.45	1689.74	1672.06	392.09	1748504.20	14578804.12	40°08'32.454"N	104°36'47.662"W	0.21	
8740.00	90.860	0.690	6894.61	1776.68	1759.04	393.37	1748505.10	14578891.08	40°08'33.314"N	104°36'47.646"W	0.78	
8827.00	91.700	0.300	6892.66	1863.58	1846.02	394.12	1748505.47	14578978.02	40°08'34.173"N	104°36'47.636"W	1.06	
8915.00	89.750	359.780	6891.55	1951.46	1934.01	394.18	1748505.15	14579065.98	40°08'35.043"N	104°36'47.635"W	2.29	
9002.00	89.010	358.920	6892.49	2038.29	2020.99	393.19	1748503.79	14579152.92	40°08'35.903"N	104°36'47.648"W	1.30	
9090.00	89.450	0.970	6893.67	2126.16	2108.98	393.11	1748503.33	14579240.88	40°08'36.772"N	104°36'47.649"W	2.38	
9177.00	88.950	359.650	6894.89	2213.06	2195.97	393.58	1748503.42	14579327.83	40°08'37.632"N	104°36'47.643"W	1.62	
9265.00	90.770	1.370	6895.10	2300.98	2283.96	394.36	1748503.82	14579415.79	40°08'38.501"N	104°36'47.633"W	2.85	
9352.00	90.990	0.680	6893.77	2387.92	2370.93	395.92	1748505.00	14579502.74	40°08'39.361"N	104°36'47.613"W	0.83	
9440.00	89.320	0.400	6893.53	2475.84	2458.93	396.75	1748505.45	14579590.70	40°08'40.230"N	104°36'47.602"W	1.92	
9527.00	88.550	359.840	6895.15	2562.72	2545.91	396.93	1748505.25	14579677.65	40°08'41.090"N	104°36'47.600"W	1.09	
9615.00	88.550	0.940	6897.37	2650.61	2633.88	397.53	1748505.47	14579765.58	40°08'41.959"N	104°36'47.592"W	1.25	
9702.00	89.260	1.540	6899.04	2737.55	2720.84	399.41	1748506.97	14579852.52	40°08'42.819"N	104°36'47.568"W	1.07	
9790.00	90.250	2.010	6899.41	2825.54	2808.80	402.14	1748509.32	14579940.45	40°08'43.688"N	104°36'47.533"W	1.25	
9877.00	89.880	1.220	6899.31	2912.51	2895.76	404.59	1748511.39	14580027.39	40°08'44.547"N	104°36'47.501"W	1.00	
9965.00	89.230	0.850	6900.00	3000.46	2983.74	406.18	1748512.60	14580115.35	40°08'45.417"N	104°36'47.481"W	0.85	
10052.00	90.460	1.990	6900.23	3087.43	3070.71	408.34	1748514.38	14580202.29	40°08'46.276"N	104°36'47.453"W	1.93	

REFERENCE WELLPATH IDENTIFICATION			
Operator	KERR-MCGEE OIL & GAS ONSHORE LP (WA)	Slot	SLOT#14 GUEST 3N-12HZ (1937'FWL & 2390'FSL, SEC.13)
Area	COLORADO	Well	GUEST 3N-12HZ
Field	WELD COUNTY (UTM/TRUE NORTH)	Wellbore	GUEST 3N-12HZ AWB
Facility	SEC.13-T2N-R65W		

WELLPATH DATA (184 stations)

MD [ft]	Inclination [°]	Azimuth [°]	TVD [ft]	Vert Sect [ft]	North [ft]	East [ft]	Grid East [US ft]	Grid North [US ft]	Latitude	Longitude	DLS [°/100ft]	Comments
10140.00	90.860	1.580	6899.22	3175.41	3158.67	411.08	1748516.74	14580290.22	40°08'47.145"N	104°36'47.417"W	0.65	
10228.00	90.580	0.640	6898.11	3263.36	3246.64	412.78	1748518.06	14580378.17	40°08'48.015"N	104°36'47.396"W	1.11	
10315.00	91.510	0.600	6896.53	3350.27	3333.62	413.72	1748518.62	14580465.12	40°08'48.874"N	104°36'47.383"W	1.07	
10403.00	90.060	359.000	6895.32	3438.13	3421.61	413.41	1748517.93	14580553.07	40°08'49.744"N	104°36'47.387"W	2.45	
10490.00	89.230	357.810	6895.86	3524.86	3508.57	410.99	1748515.14	14580639.98	40°08'50.603"N	104°36'47.418"W	1.67	
10578.00	89.940	0.030	6896.50	3612.64	3596.54	409.33	1748513.10	14580727.92	40°08'51.472"N	104°36'47.440"W	2.65	
10665.00	89.480	359.490	6896.94	3699.51	3683.54	408.97	1748512.36	14580814.88	40°08'52.332"N	104°36'47.444"W	0.82	
10753.00	88.710	358.540	6898.33	3787.29	3771.52	407.46	1748510.46	14580902.81	40°08'53.201"N	104°36'47.464"W	1.39	
10840.00	90.400	0.040	6899.00	3874.11	3858.50	406.38	1748509.01	14580989.76	40°08'54.061"N	104°36'47.478"W	2.60	
10928.00	90.960	359.820	6897.96	3961.99	3946.49	406.27	1748508.52	14581077.72	40°08'54.931"N	104°36'47.479"W	0.68	
11016.00	90.890	358.700	6896.54	4049.80	4034.47	405.14	1748507.00	14581165.65	40°08'55.800"N	104°36'47.494"W	1.28	
11103.00	90.030	359.110	6895.84	4136.58	4121.45	403.47	1748504.96	14581252.59	40°08'56.659"N	104°36'47.515"W	1.10	
11191.00	89.970	358.520	6895.84	4224.36	4209.44	401.65	1748502.76	14581340.53	40°08'57.529"N	104°36'47.539"W	0.67	
11278.00	89.450	359.440	6896.28	4311.15	4296.42	400.11	1748500.84	14581427.47	40°08'58.389"N	104°36'47.559"W	1.21	
11366.00	90.060	3.740	6896.66	4399.11	4384.36	402.55	1748502.90	14581515.39	40°08'59.258"N	104°36'47.527"W	4.94	
11453.00	89.660	3.250	6896.87	4486.10	4471.20	407.85	1748507.82	14581602.22	40°09'00.116"N	104°36'47.459"W	0.73	
11541.00	89.480	2.470	6897.53	4574.10	4559.09	412.24	1748511.83	14581690.09	40°09'00.984"N	104°36'47.402"W	0.91	
11628.00	89.780	2.340	6898.09	4661.09	4646.01	415.89	1748515.10	14581776.99	40°09'01.843"N	104°36'47.355"W	0.38	
11716.00	89.780	1.690	6898.43	4749.08	4733.95	418.99	1748517.81	14581864.92	40°09'02.712"N	104°36'47.315"W	0.74	
11803.00	89.410	1.230	6899.04	4836.05	4820.92	421.20	1748519.65	14581951.86	40°09'03.572"N	104°36'47.287"W	0.68	
11891.00	89.450	1.370	6899.92	4924.01	4908.90	423.20	1748521.27	14582039.81	40°09'04.441"N	104°36'47.261"W	0.17	
11978.00	90.590	2.410	6899.89	5011.00	4995.85	426.07	1748523.76	14582126.73	40°09'05.300"N	104°36'47.224"W	1.77	
12066.00	90.650	2.090	6898.94	5098.99	5083.77	429.52	1748526.83	14582214.64	40°09'06.169"N	104°36'47.179"W	0.37	
12153.00	90.800	1.150	6897.84	5185.96	5170.73	431.98	1748528.91	14582301.58	40°09'07.029"N	104°36'47.148"W	1.09	
12241.00	90.770	1.310	6896.63	5273.91	5258.70	433.87	1748530.42	14582389.52	40°09'07.898"N	104°36'47.123"W	0.18	
12328.00	90.220	358.970	6895.88	5360.80	5345.69	434.08	1748530.25	14582476.48	40°09'08.757"N	104°36'47.121"W	2.76	
12416.00	89.480	358.100	6896.11	5448.54	5433.66	431.83	1748527.62	14582564.40	40°09'09.627"N	104°36'47.150"W	1.30	
12503.00	90.860	358.640	6895.85	5535.27	5520.62	429.36	1748524.77	14582651.32	40°09'10.486"N	104°36'47.181"W	1.70	
12590.00	89.820	357.210	6895.33	5621.94	5607.56	426.21	1748521.25	14582738.21	40°09'11.345"N	104°36'47.222"W	2.03	
12677.00	90.710	357.500	6894.93	5708.53	5694.47	422.19	1748516.86	14582825.06	40°09'12.204"N	104°36'47.274"W	1.08	

REFERENCE WELLPATH IDENTIFICATION			
Operator	KERR-MCGEE OIL & GAS ONSHORE LP (WA)	Slot	SLOT#14 GUEST 3N-12HZ (1937'FWL & 2390'FSL, SEC.13)
Area	COLORADO	Well	GUEST 3N-12HZ
Field	WELD COUNTY (UTM/TRUE NORTH)	Wellbore	GUEST 3N-12HZ AWB
Facility	SEC.13-T2N-R65W		

WELLPATH DATA (184 stations) † = interpolated/extrapolated station												
MD (ft)	Inclination (°)	Azimuth (°)	TVD (ft)	Vert Sect (ft)	North (ft)	East (ft)	Grid East (US ft)	Grid North (US ft)	Latitude	Longitude	DLS (°/100ft)	Comments
12765.00	91.230	356.870	6893.44	5796.08	5782.35	417.87	1748512.16	14582912.89	40°09'13.073"N	104°36'47.329"W	0.93	
12853.00	89.230	358.490	6893.09	5883.71	5870.27	414.31	1748508.22	14583000.76	40°09'13.941"N	104°36'47.375"W	2.92	
12940.00	89.200	359.960	6894.28	5970.52	5957.25	413.13	1748506.66	14583087.70	40°09'14.801"N	104°36'47.390"W	1.69	
13027.00	91.630	1.670	6893.65	6057.45	6044.23	414.37	1748507.52	14583174.65	40°09'15.660"N	104°36'47.374"W	3.42	
13115.00	91.970	1.150	6890.89	6145.37	6132.16	416.54	1748509.31	14583262.55	40°09'16.529"N	104°36'47.346"W	0.71	
13203.00	89.320	0.300	6889.90	6233.30	6220.14	417.65	1748510.04	14583350.50	40°09'17.399"N	104°36'47.332"W	3.16	
13290.00	89.570	359.860	6890.74	6320.19	6307.13	417.77	1748509.78	14583437.46	40°09'18.258"N	104°36'47.331"W	0.58	
13378.00	90.090	358.940	6891.00	6408.02	6395.13	416.85	1748508.48	14583525.42	40°09'19.128"N	104°36'47.342"W	1.20	
13465.00	90.030	358.020	6890.91	6494.76	6482.09	414.54	1748505.80	14583612.34	40°09'19.987"N	104°36'47.372"W	1.06	
13553.00	90.370	359.570	6890.60	6582.53	6570.07	412.69	1748503.56	14583700.27	40°09'20.857"N	104°36'47.396"W	1.80	
13640.00	89.140	0.420	6890.97	6669.42	6657.07	412.68	1748503.18	14583787.24	40°09'21.717"N	104°36'47.396"W	1.72	
13727.00	90.180	0.610	6891.49	6756.34	6744.06	413.47	1748503.58	14583874.20	40°09'22.576"N	104°36'47.386"W	1.22	
13814.00	90.310	359.970	6891.12	6843.25	6831.06	413.91	1748503.65	14583961.16	40°09'23.436"N	104°36'47.380"W	0.75	
13901.00	90.150	0.560	6890.77	6930.16	6918.06	414.31	1748503.67	14584048.13	40°09'24.296"N	104°36'47.375"W	0.70	
13989.00	90.370	356.890	6890.37	7017.91	7006.02	412.35	1748501.33	14584136.05	40°09'25.165"N	104°36'47.400"W	4.18	
14076.00	89.750	358.150	6890.28	7104.52	7092.94	408.59	1748497.19	14584222.91	40°09'26.024"N	104°36'47.449"W	1.61	
14164.00	90.280	0.010	6890.25	7192.32	7180.92	407.17	1748495.40	14584310.86	40°09'26.893"N	104°36'47.467"W	2.20	
14251.00	90.090	1.170	6889.97	7279.25	7267.91	408.07	1748495.92	14584397.82	40°09'27.753"N	104°36'47.455"W	1.35	
14338.00	90.490	359.150	6889.53	7366.14	7354.91	408.31	1748495.79	14584484.78	40°09'28.613"N	104°36'47.452"W	2.37	
14425.00	90.150	1.070	6889.05	7453.04	7441.90	408.48	1748495.58	14584571.74	40°09'29.472"N	104°36'47.450"W	2.24	
14512.00	90.520	1.180	6888.54	7539.99	7528.88	410.19	1748496.91	14584658.69	40°09'30.332"N	104°36'47.428"W	0.44	
14600.00	90.710	0.630	6887.59	7627.93	7616.87	411.58	1748497.91	14584746.65	40°09'31.201"N	104°36'47.410"W	0.66	
14687.00	90.090	359.530	6886.99	7714.82	7703.86	411.70	1748497.66	14584833.61	40°09'32.061"N	104°36'47.408"W	1.45	
14775.00	90.180	0.480	6886.78	7802.71	7791.86	411.71	1748497.28	14584921.57	40°09'32.931"N	104°36'47.408"W	1.08	
14785.00†	90.170	0.401	6886.75	7812.70	7801.86	411.78	1748497.32	14584931.57	40°09'33.029"N	104°36'47.407"W	0.80	ENTERED RADIUS TOE (361'FNL & 2276'FWL, SEC.12) 40.1591749 -104.6131687
14862.00	90.090	359.790	6886.57	7889.61	7878.86	411.91	1748497.11	14585008.54	40°09'33.790"N	104°36'47.406"W	0.80	
14950.00	89.720	0.450	6886.72	7977.51	7966.86	412.09	1748496.92	14585096.50	40°09'34.660"N	104°36'47.403"W	0.86	
15037.00	90.340	2.270	6886.67	8064.47	8053.83	414.16	1748498.60	14585183.45	40°09'35.519"N	104°36'47.377"W	2.21	
15125.00	91.260	2.630	6885.45	8152.46	8141.74	417.92	1748501.98	14585271.34	40°09'36.388"N	104°36'47.328"W	1.12	
15213.00	92.060	2.260	6882.90	8240.42	8229.62	421.67	1748505.35	14585359.20	40°09'37.257"N	104°36'47.280"W	1.00	

REFERENCE WELLPATH IDENTIFICATION			
Operator	KERR-MCGEE OIL & GAS ONSHORE LP (WA)	Slot	SLOT#14 GUEST 3N-12HZ (1937'FWL & 2390'FSL, SEC.13)
Area	COLORADO	Well	GUEST 3N-12HZ
Field	WELD COUNTY (UTM/TRUE NORTH)	Wellbore	GUEST 3N-12HZ AWB
Facility	SEC.13-T2N-R65W		

WELLPATH DATA (184 stations)												
MD [ft]	Inclination [°]	Azimuth [°]	TVD [ft]	Vert Sect [ft]	North [ft]	East [ft]	Grid East [US ft]	Grid North [US ft]	Latitude	Longitude	DLS [°/100ft]	Comments
15301.00	92.930	2.090	6879.07	8328.33	8317.48	425.01	1748508.31	14585447.04	40°09'38.125"N	104°36'47.237"W	1.01	
15388.00	93.760	1.770	6873.99	8415.16	8404.28	427.94	1748510.85	14585533.82	40°09'38.983"N	104°36'47.199"W	1.02	
15459.00	94.440	1.700	6868.91	8485.97	8475.06	430.08	1748512.69	14585604.58	40°09'39.682"N	104°36'47.171"W	0.96	LAST SDI MWD+IFR+SC SURVEY
15510.00	94.440	1.700	6864.97	8536.80	8525.89	431.59	1748513.98	14585655.39	40°09'40.184"N	104°36'47.152"W	0.00	PTB (363'FSL & 2297'FWL,SEC.01) 40.1611623 -104.6130978

REFERENCE WELLPATH IDENTIFICATION			
Operator	KERR-MCGEE OIL & GAS ONSHORE LP (WA)	Slot	SLOT#14 GUEST 3N-12HZ (1937'FWL & 2390'FSL, SEC.13)
Area	COLORADO	Well	GUEST 3N-12HZ
Field	WELD COUNTY (UTM/TRUE NORTH)	Wellbore	GUEST 3N-12HZ AWB
Facility	SEC.13-T2N-R65W		

TARGETS								
Name	TVD [ft]	North [ft]	East [ft]	Grid East [US ft]	Grid North [US ft]	Latitude	Longitude	Shape
SEC.01-T2N-R65W	-9.00	0.10	-59.73	1748059.81	14577130.87	40°08'15.932"N	104°36'53.480"W	polygon
SEC.12-T2N-R65W	-9.00	0.10	-59.73	1748059.81	14577130.87	40°08'15.932"N	104°36'53.480"W	polygon
SEC.13-T2N-R65W	-9.00	0.10	-59.73	1748059.81	14577130.87	40°08'15.932"N	104°36'53.480"W	polygon
GUEST 3N-12HZ CIRCLE 1	6883.20	235.75	672.58	1748790.80	14577369.60	40°08'18.261"N	104°36'44.051"W	polygon
GUEST 3N-12HZ CIRCLE 2	6883.20	8149.02	712.99	1748796.90	14585279.90	40°09'36.460"N	104°36'43.528"W	polygon
GUEST 3N-12HZ LANDBOX	6883.20	0.00	0.00	1748119.51	14577131.03	40°08'15.931"N	104°36'52.711"W	polygon
GUEST 3N-12HZ BHL REV-1(393'FSL & 2276'FWL, SEC.01)	6883.20	8555.60	410.86	1748493.13	14585685.01	40°09'40.478"N	104°36'47.419"W	point
GUEST 3N-12HZ BHL REV-2(393'FSL & 2296'FWL, SEC.01)	6883.20	8555.60	430.86	1748513.12	14585685.10	40°09'40.478"N	104°36'47.161"W	point
GUEST 3N-12HZ HEEL REV-1(2590'FNL & 2330'FWL, SEC.13)	6883.20	286.78	394.23	1748512.34	14577419.41	40°08'18.765"N	104°36'47.635"W	point

WELLPATH COMPOSITION - Ref Wellbore: GUEST 3N-12HZ AWB Ref Wellpath: GUEST 3N-12HZ AWP				
Start MD [ft]	End MD [ft]	Positional Uncertainty Model	Log Name/Comment	Wellbore
17.00	1777.00	Custom APC ISCWSA REV 2 MWD+IFR1 (approximation)	SDI MWD+IFR SURVEYS <145 - 1777>	GUEST 3N-12HZ AWB
1777.00	15459.00	Custom APC ISCWSA REV 2 MWD+IFR1+SC (approximation)	BHI APC ISCWSA REV 2 MWD+IFR1+SC <1891 - 15459>	GUEST 3N-12HZ AWB
15459.00	15510.00	Blind Drilling (std)	Projection to bit	GUEST 3N-12HZ AWB

REFERENCE WELLPATH IDENTIFICATION			
Operator	KERR-MCGEE OIL & GAS ONSHORE LP (WA)	Slot	SLOT#14 GUEST 3N-12HZ (1937'FWL & 2390'FSL, SEC.13)
Area	COLORADO	Well	GUEST 3N-12HZ
Field	WELD COUNTY (UTM/TRUE NORTH)	Wellbore	GUEST 3N-12HZ AWB
Facility	SEC.13-T2N-R65W		

WELLPATH COMMENTS				
MD [ft]	Inclination [°]	Azimuth [°]	TVD [ft]	Comment
145.00	0.420	325.000	145.00	FIRST SDI MWD+IFR SURVEY
1777.00	10.970	129.760	1764.76	LAST SDI MWD+IFR SURVEY
1891.00	11.480	133.260	1876.58	FIRST SDI MWD+IFR+SC SURVEY
2431.00	11.377	146.475	2405.78	ENTERED LANDBOX (2187'FSL & 2148'FEL, SEC.13) 40.1372026 -104.6138855
6164.00	2.826	5.811	6112.72	KOP
6784.00	48.230	359.584	6640.31	ENTERED RADIUS HEEL (2254'FSL & 2337'FEL, SEC.13) 40.1373865 -104.6132081
7425.00	87.642	0.154	6887.72	LANDING (2834'FSL & 2331'FWL, SEC.13) 40.1389780 -104.6132327
14785.00	90.170	0.401	6886.75	ENTERED RADIUS TOE (361'FNL & 2276'FWL, SEC.12) 40.1591749 -104.6131687
15459.00	94.440	1.700	6868.91	LAST SDI MWD+IFR+SC SURVEY
15510.00	94.440	1.700	6864.97	PTB (363'FSL & 2297'FWL, SEC.01) 40.1611623 -104.6130978