

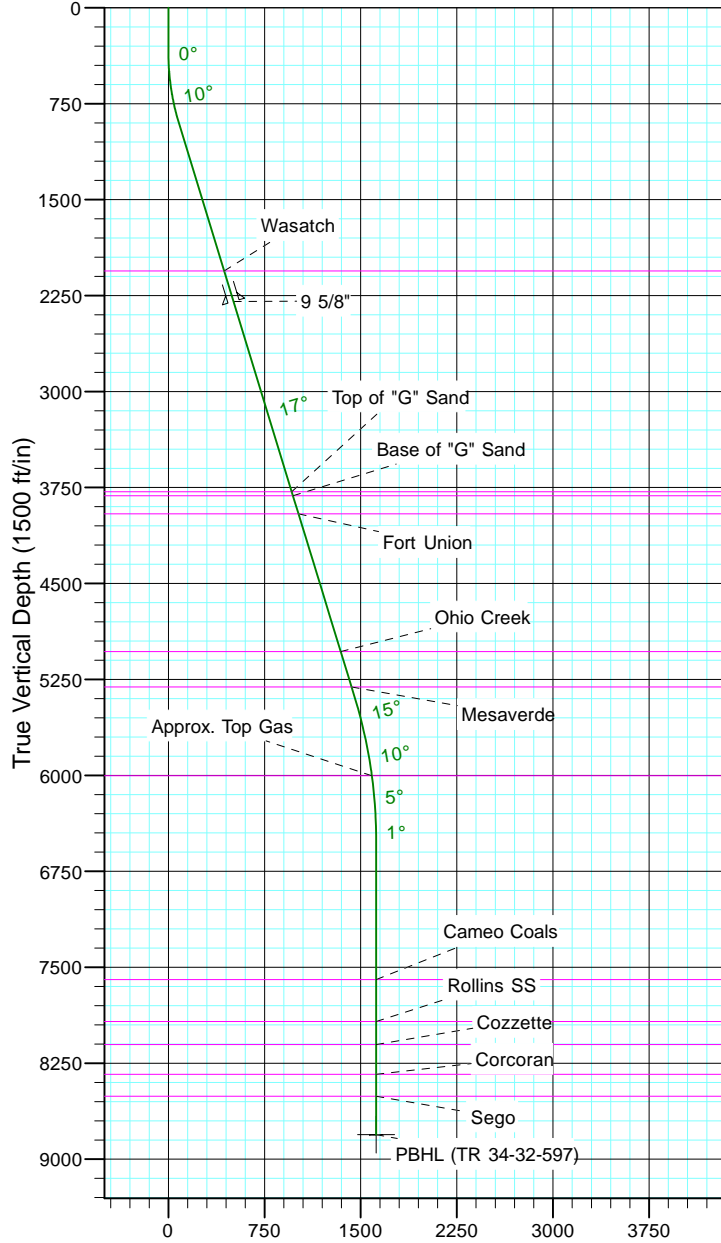
TEP Rocky Mountain LLC

Project: Garfield County, CO NAD83
 Site: TR 43-32-597 Pad
 Well: TR 34-32-597
 Wellbore: OH
 Design: Plan #1



Azimuths to True North
 Magnetic North: 9.85°

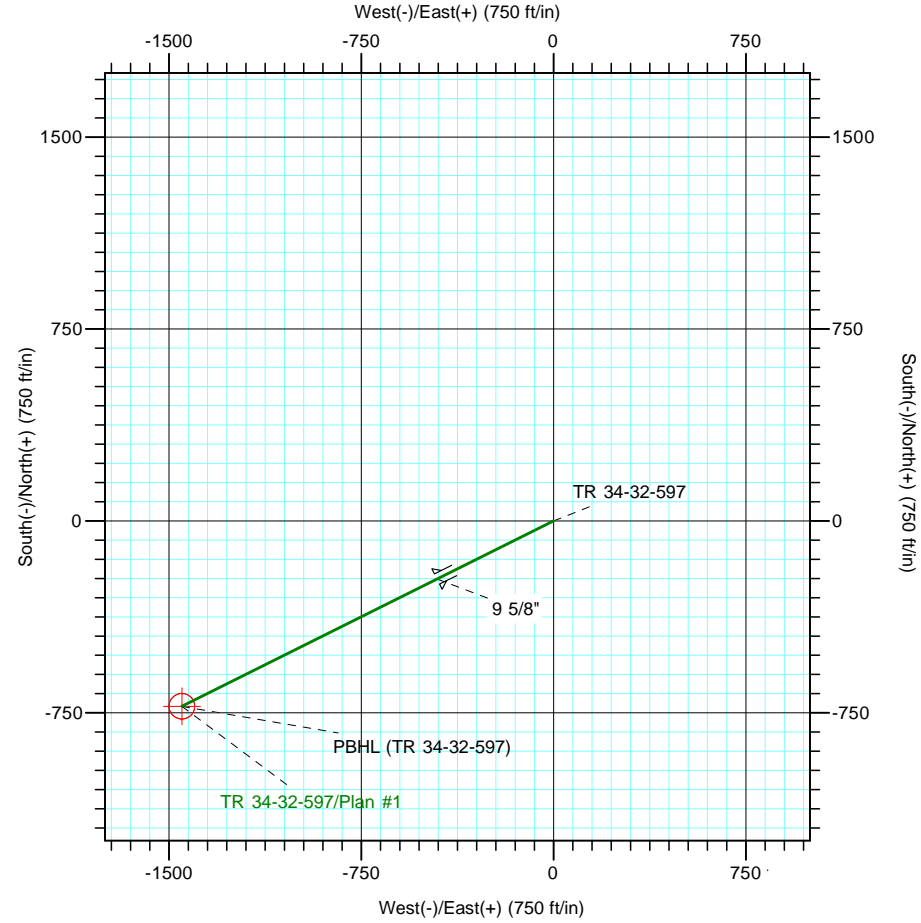
Magnetic Field
 Strength: 51523.9snT
 Dip Angle: 65.59°
 Date: 5/11/2017
 Model: IGRF2015



Vertical Section at 243.46° (1500 ft/in)

CASING DETAILS				
TVD	MD	Name	Size	
2297.3	2369.0	9 5/8"	9.625	

FORMATION TOP DETAILS				
TVDPath	MDPath	Formation		
2058.0	2118.8	Wasatch		
3783.0	3922.6	Top of "G" Sand		
3815.0	3956.1	Base of "G" Sand		
3956.0	4103.5	Fort Union		
5033.0	5229.7	Ohio Creek		
5309.0	5518.3	Mesaverde		
6004.0	6232.1	Approx. Top Gas		
7597.0	7826.6	Cameo Coals		
7925.0	8154.6	Rollins SS		
8105.0	8334.6	Cozzette		
8338.0	8567.6	Corcoran		
8509.0	8738.6	Sego		



Name	TVD	DESIGN TARGET DETAILS					
		+N/-S	+E/-W	Northing	Easting	Latitude	Longitude
PBHL (TR 34-32-597)	8809.0	-724.3	-1449.9	1643377.40	2210967.60	39° 33' 59.309 N	108° 17' 57.338 W

Sec	MD	Inc	Azi	TVD	SECTION DETAILS					
					+N/-S	+E/-W	Dleg	TFace	VSect	Target
1	0.0	0.00	0.00	0.0	0.0	0.0	0.00	0.00	0.0	0.0
2	350.0	0.00	0.00	350.0	0.0	0.0	0.00	0.00	0.0	0.0
3	916.6	17.00	243.46	908.3	-37.3	-74.6	3.00	243.46	83.4	
4	5604.4	17.00	243.46	5391.3	-649.7	-1300.6	0.00	0.00	1453.9	
5	6737.6	0.00	0.00	6508.0	-724.3	-1449.9	1.50	180.00	1620.7	
6	9038.6	0.00	0.00	8809.0	-724.3	-1449.9	0.00	0.00	1620.7	PBHL (TR 34-32-597)