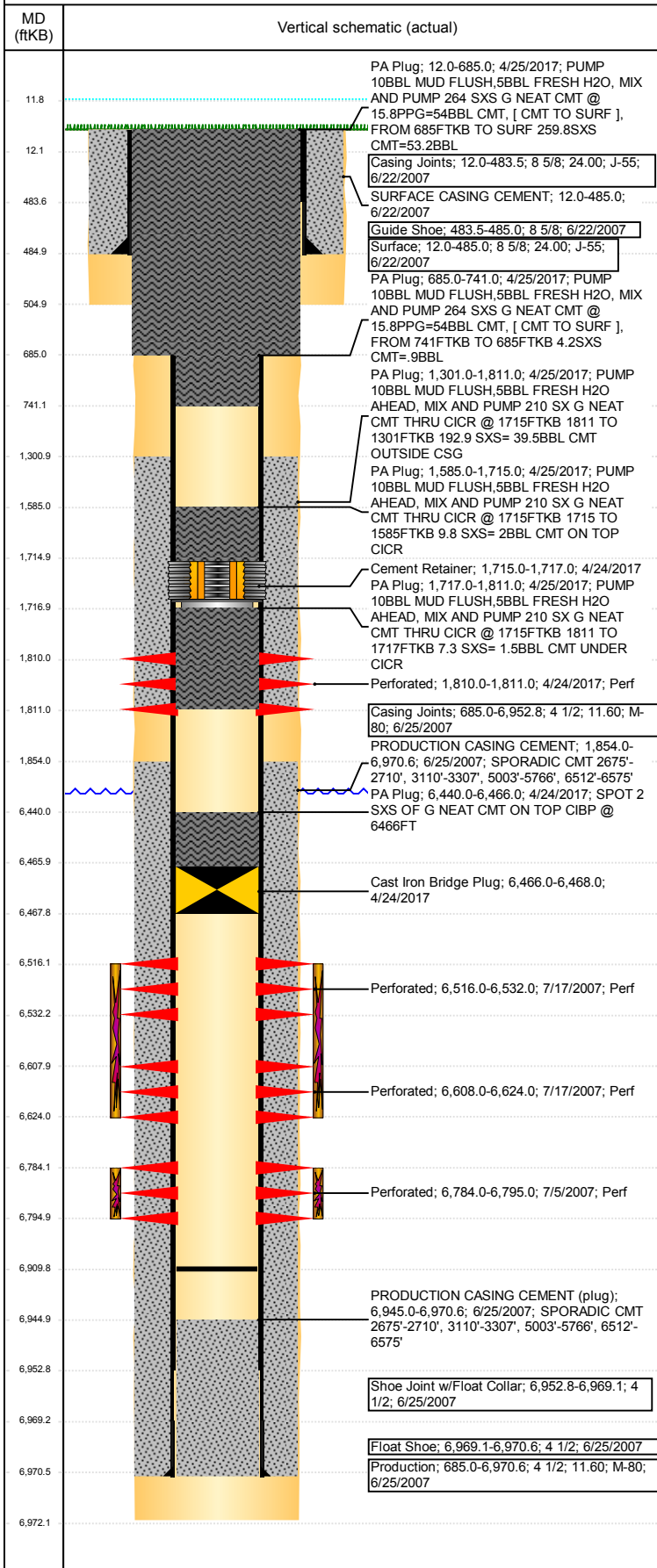


Well Name: WELLS RANCH USX BB 05-15

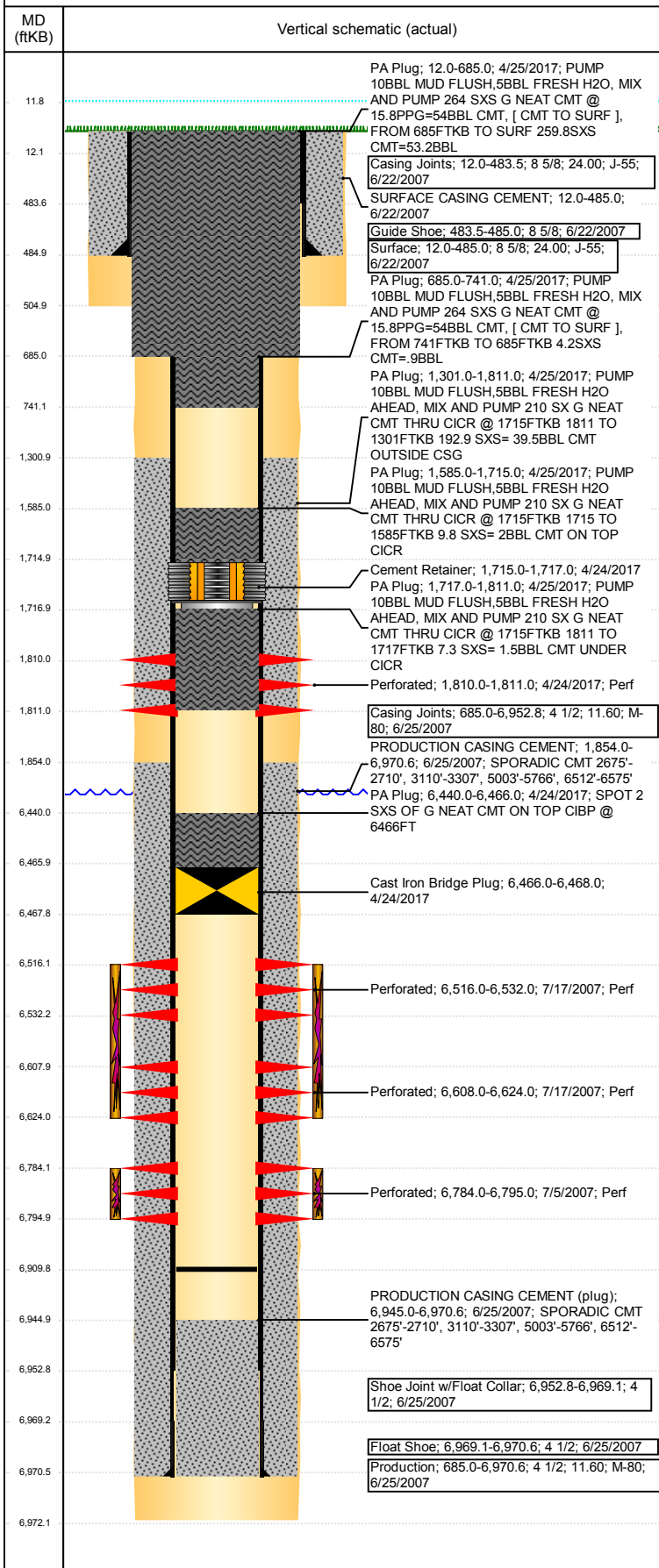
VERTICAL - ORIGINAL HOLE, 5/25/2017 7:39:14 AM



Well Header						
API 05-123-25281	Business Unit DJ BASIN		District 15		Well Config VERTICAL	
Original KB Elevation (ft) 4,740	KB - GL / MSL (ftKB) 12.00		Spud Date 6/21/2007		P & A Date 4/25/2017	
Comment						
Directions To Well						
Congressional Location						
Quarter 3 SW	Quarter 4 SE	Section 5	Township 5	Twntshp N/S Dir N	Range 63	Range E/W Dir W
Bottom Hole Location						
North-South Distance (ft)		From N or S Line		East-West Distance (ft)		From E or W Line
Plug Back Total Depths						
Date	Depth (ftKB)	Method		Com		
6/25/2007	6,953.0	CASING TALLY		FLOAT SHOE W/COLLAR		
6/28/2007	6,945.0	CASED HOLE LOG		DEPTH LOGGER ON CBL		
9/20/2007	6,909.8	TAG		C/O TO 6909.8		
Wellbore Sections						
Section Des		Size (in)		Act Top, MD (ftKB)		Act Btm, MD (ftKB)
SURFACE		12 1/4		12		505
PRODUCTION		7 7/8		505		6,972
Zone Statuses						
Zone Name	Status Date	Status	Fluid Type	Job	Prod Method	
NIOBRARA	7/20/2007	PR		DRILLING/CO...		
NIOBRARA	4/24/2017	P&A		PLUG AND AB...		
CODELL	7/20/2007	PR		DRILLING/CO...		
CODELL	4/24/2017	P&A		PLUG AND AB...		
Casing Strings						
Surface, 485.0ftKB						
Casing Description Surface	Run Date 6/22/2007	OD (in) 8 5/8	Wt/Len (l...) 24.00	Grade J-55	Top, MD (ft...) 12.0	MD (ftKB) 485.0
Production, 6,970.6ftKB						
Casing Description Production	Run Date 6/25/2007	OD (in) 4 1/2	Wt/Len (l...) 11.60	Grade M-80	Top, MD (ft...) 12.0	MD (ftKB) 6,970.6
Cement						
Description SURFACE CASING CEMENT				Top Depth (ftKB) 12.0		Bottom Depth (ftKB) 485.0
Description PRODUCTION CASING CEMENT				Top Depth (ftKB) 1,854.0		Bottom Depth (ftKB) 6,970.6
Description PA Plug				Top Depth (ftKB) 6,440.0		Bottom Depth (ftKB) 6,466.0
Description PA Plug				Top Depth (ftKB) 1,585.0		Bottom Depth (ftKB) 1,715.0
Description PA Plug				Top Depth (ftKB) 1,717.0		Bottom Depth (ftKB) 1,811.0
Description PA Plug				Top Depth (ftKB) 1,301.0		Bottom Depth (ftKB) 1,811.0
Description PA Plug				Top Depth (ftKB) 685.0		Bottom Depth (ftKB) 741.0
Description PA Plug				Top Depth (ftKB) 12.0		Bottom Depth (ftKB) 685.0
Tubing Strings						
Tubing Description Tubing - Production	Run Date 9/21/2007	String... 2 3/8	ID (in) 2.00	Wt (lb/ft) 4.70	Grade J-55	Len (ft) 6,757.00
Set De...						
Other In Hole						
Run Date		Des		OD (in)	Top (ftKB)	Btm (ftKB)
4/24/2017		Cast Iron Bridge Plug		3.99	6,466.0	6,468.0
4/24/2017		Cement Retainer		3.99	1,715.0	1,717.0
Logs						
Date	Type			Top, MD (ftKB)		Btm, MD (ftKB)
6/24/2007	COMPENSATED DENSITY			2,700.0		6,952.0
6/24/2007	INDUCTION			12.0		6,972.0
6/28/2007	CBL/CCL/GR			1,730.0		6,938.0
5/7/2015	GYRO			12.0		6,700.0

Well Name: WELLS RANCH USX BB 05-15

VERTICAL - ORIGINAL HOLE, 5/25/2017 7:39:14 AM



Perforation Data

Linked Zone	Bnch/St g	Sum of Entered Shot Total	Top (ftKB)	Btm (ftKB)	Date
CODELL, ORIGINAL HOLE		6	1,810.00	1,811.00	4/24/2017
NIOBRARA, ORIGINAL HOLE		64	6,516.00	6,532.00	7/17/2007
NIOBRARA, ORIGINAL HOLE		64	6,608.00	6,624.00	7/17/2007
CODELL, ORIGINAL HOLE		44	6,784.00	6,795.00	7/5/2007

Total (Sum)

178

Stimulation Intervals

Start Date 7/17/2007	Primary Job Type DRILLING/COMPLETION - ORIGINAL	
Technical Result	Tech Result Details	Tech Result Note
Comment		
Start Date 7/17/2007	Primary Job Type DRILLING/COMPLETION - ORIGINAL	
Technical Result	Tech Result Details	Tech Result Note
Comment		