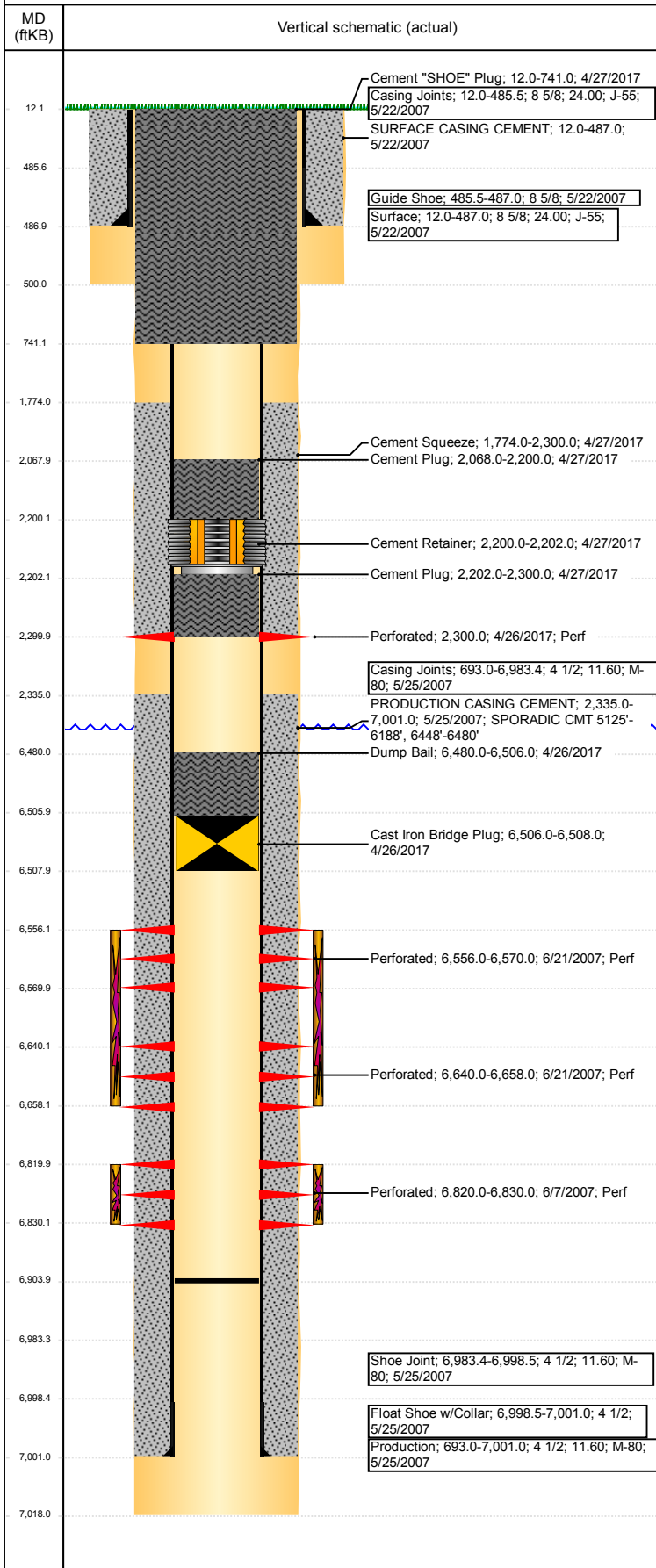


Well Name: WELLS RANCH USX AA33-23

VERTICAL - ORIGINAL HOLE, 5/23/2017 4:44:20 PM



Well Header

API 05-123-25114	Business Unit DJ BASIN	District 15	Well Config VERTICAL
Original KB Elevation (ft) 4,811	KB - GL / MSL (ftKB) 12.00	Spud Date 5/21/2007	P & A Date 4/27/2017

Comment
DISCREPANCY IN TD: 7018' DAILY DRLG RPT & TD LOGGER/ 7017' RPT TO COGCC

Directions To Well

67 & 68, E 2/10, S 2.8MI TO SS OF COW CAMP, SW 1/2, W 3/10, N INTO

Congressional Location

Quarter 3 SW	Quarter 4 SE	Section 33	Township 6	Twntshp N/S Dir N	Range 63	Range E/W Dir W
-----------------	-----------------	---------------	---------------	----------------------	-------------	--------------------

Bottom Hole Location

North-South Distance (ft)	From N or S Line	East-West Distance (ft)	From E or W Line
---------------------------	------------------	-------------------------	------------------

Plug Back Total Depths

Date	Depth (ftKB)	Method	Com
5/25/2007	6,984.0	CASING TALLY	FLOAT SHOE W/COLLAR
6/4/2007	6,966.0	CASED HOLE LOG	DEPTH LOGGER ON CBL
12/5/2007	6,904.0	TAG	C/O TO 6904'

Wellbore Sections

Section Des	Size (in)	Act Top, MD (ftKB)	Act Btm, MD (ftKB)
SURFACE	12 1/4	12	500
PRODUCTION	7 7/8	500	7,018

Zone Statuses

Zone Name	Status Date	Status	Fluid Type	Job	Prod Method
CODELL	7/9/2007	PR		DRILLING/CO...	
CODELL	4/26/2017	P&A		PLUG AND AB...	
NIOBRARA	7/9/2007	PR		DRILLING/CO...	
NIOBRARA	4/26/2017	P&A		PLUG AND AB...	

Casing Strings

Surface, 487.0ftKB

Casing Description	Run Date	OD (in)	Wt/Len (l...)	Grade	Top, MD (ft...)	MD (ftKB)
Surface	5/22/2007	8 5/8	24.00	J-55	12.0	487.0

Production, 7,001.0ftKB

Casing Description	Run Date	OD (in)	Wt/Len (l...)	Grade	Top, MD (ft...)	MD (ftKB)
Production	5/25/2007	4 1/2	11.60	M-80	12.0	7,001.0

Cement

Description	Top Depth (ftKB)	Bottom Depth (ftKB)
SURFACE CASING CEMENT	12.0	487.0
PRODUCTION CASING CEMENT	2,335.0	7,001.0
Dump Bail	6,480.0	6,506.0
Cement Plug	2,068.0	2,200.0
Cement Plug	2,202.0	2,300.0
Cement Squeeze	1,774.0	2,300.0
Cement "SHOE" Plug	12.0	741.0

Tubing Strings

Tubing Description	Run Date	String...	ID (in)	Wt (lb/ft)	Grade	Len (ft)	Set De...
Tubing - Production	12/5/2007	2 3/8		4.70	J-55	6,796.00	

Other In Hole

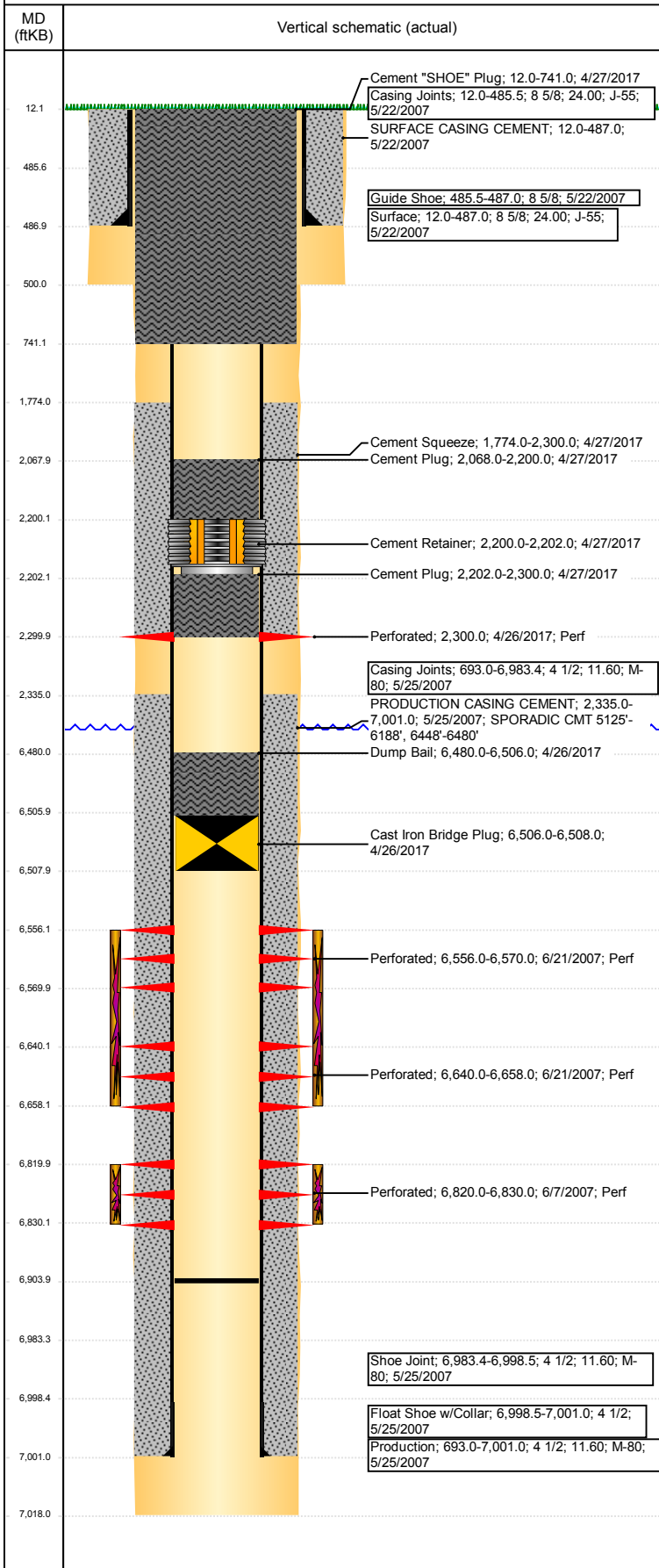
Run Date	Des	OD (in)	Top (ftKB)	Btm (ftKB)
4/26/2017	Cast Iron Bridge Plug	3.99	6,506.0	6,508.0
4/27/2017	Cement Retainer	3.99	2,200.0	2,202.0

Logs

Date	Type	Top, MD (ftKB)	Btm, MD (ftKB)
5/25/2007	COMPENSATED DENSITY	2,800.0	6,998.0
5/25/2007	INDUCTION	12.0	7,018.0
6/4/2007	CBL/CCL/GR	2,230.0	6,959.0
5/4/2015	GYRO	12.0	6,700.0

Well Name: WELLS RANCH USX AA33-23

VERTICAL - ORIGINAL HOLE, 5/23/2017 4:44:20 PM



Perforation Data					
Linked Zone	Bnch/St g	Sum of Entered Shot Total	Top (ftKB)	Btm (ftKB)	Date
NIOBARRA, ORIGINAL HOLE	A	0	2,300.00	2,300.00	4/26/2017
NIOBARRA, ORIGINAL HOLE	B	56	6,556.00	6,570.00	6/21/2007
CODELL, ORIGINAL HOLE		72	6,640.00	6,658.00	6/21/2007
		40	6,820.00	6,830.00	6/7/2007
Total (Sum)		168			
Stimulation Intervals					
Start Date		Primary Job Type			
6/21/2007		DRILLING/COMPLETION - ORIGINAL			
Technical Result		Tech Result Details		Tech Result Note	
Comment					
Start Date		Primary Job Type			
6/21/2007		DRILLING/COMPLETION - ORIGINAL			
Technical Result		Tech Result Details		Tech Result Note	
Comment					