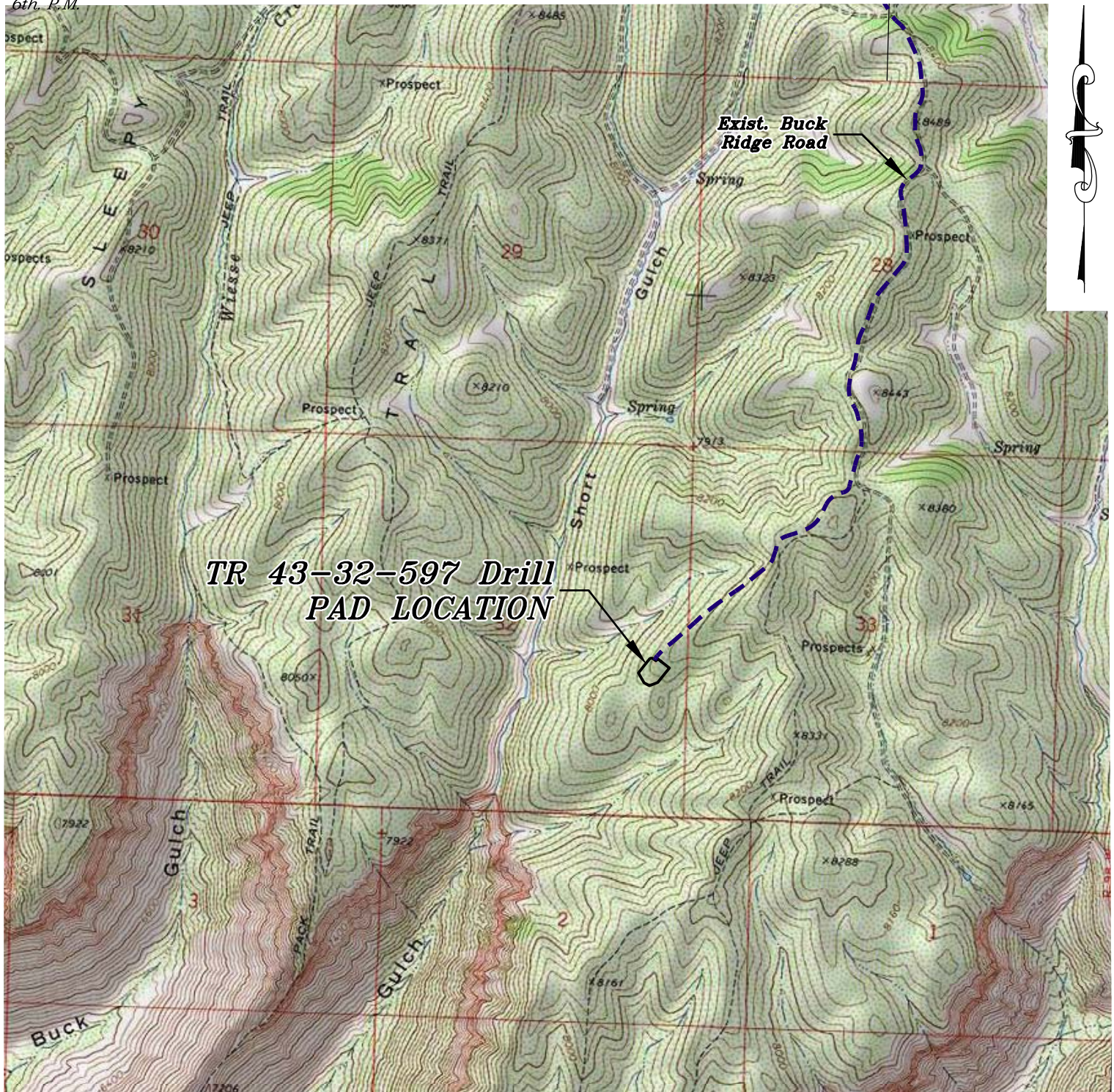


Section 32
T. 5 S., R 97 W
6th. R.M.



**TR 43-32-597 Drill
PAD LOCATION**

ACCESS DESCRIPTION:

FROM THE INTERSECTION OF THE I-70 FRONTAGE ROAD AND COUNTY ROAD 215 AT PARACHUTE, PROCEED IN A NORTHERLY DIRECTION ALONG COUNTY ROAD 215 ± 7.2 MILES TO THE INTERSECTION WITH GARDEN GULCH ROAD, PROCEED LEFT IN A WESTERLY DIRECTION ALONG GARDEN GULCH ROAD ± 23.1 MILES TO THE INTERSECTION WITH BUCK RIDGE, A DIRT/GRAVEL ROAD, PROCEED LEFT IN A SOUTHERLY DIRECTION ± 3.1 MILES TO THE EXISTING TR 43-32-597 DRILL PAD LOCATION, AS SHOWN HEREON.

136 East Third Street
Rifle, Colorado 81650
Ph. (970) 625-2720
Fax (970) 625-2773



BOOKCLIFF
Survey Services, Inc.

SCALE: 1" = 2000'
DATE: 5/2/17
PLAT: 5 of 10
PROJECT: Trail Ridge
DFT: cs

Construction Plan Prepared for:



TEP Rocky Mountain LLC

TR 43-32-597 Drill Pad - Plat 5
ACCESS ROAD & TOPO MAP