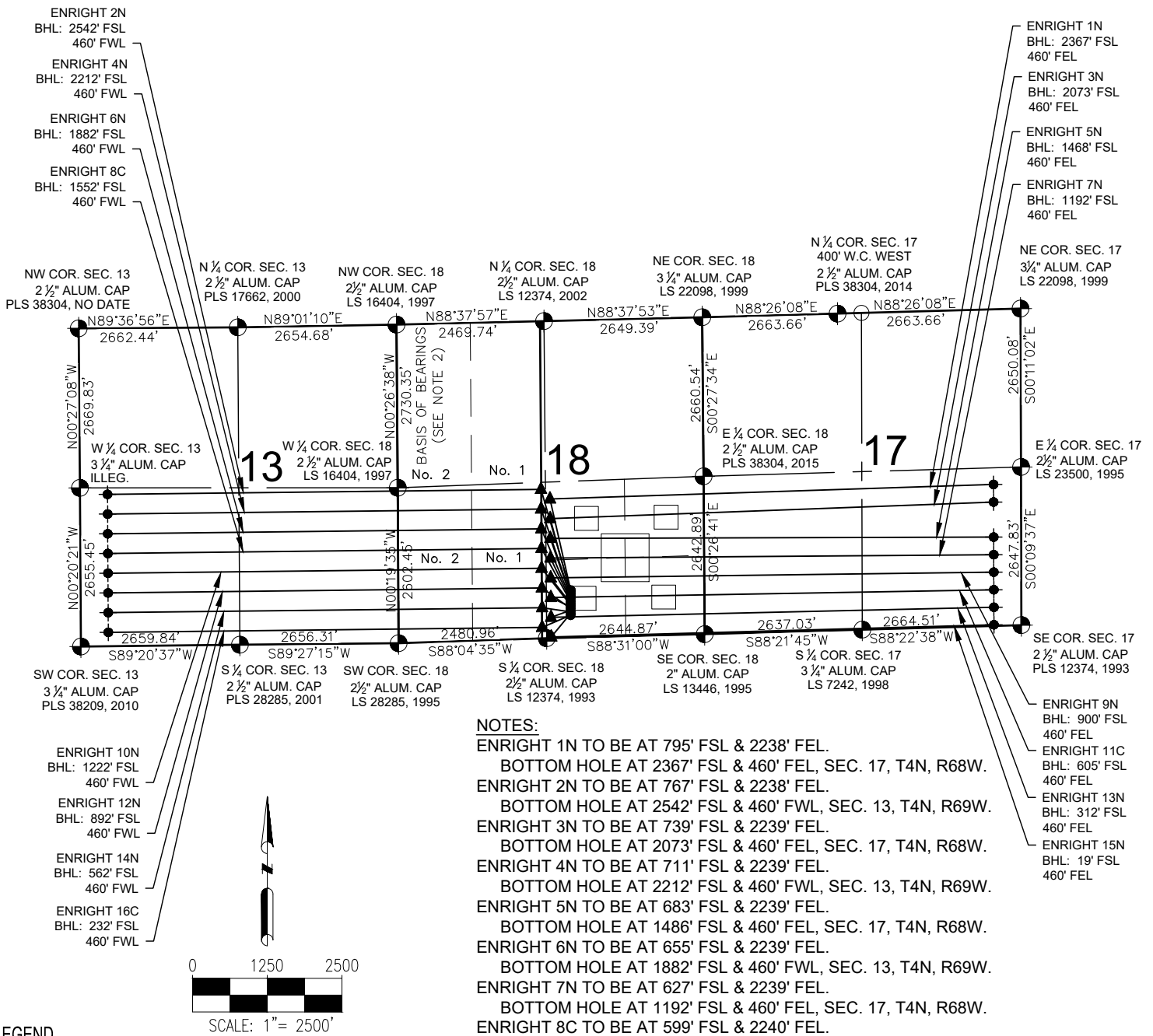








ENRIGHT 18-N PAD MULTI-WELL PLAN



NOTES:

ENRIGHT 1N TO BE AT 795' FSL & 2238' FEL.
 BOTTOM HOLE AT 2367' FSL & 460' FEL, SEC. 17, T4N, R68W.
 ENRIGHT 2N TO BE AT 767' FSL & 2238' FEL.
 BOTTOM HOLE AT 2542' FSL & 460' FWL, SEC. 13, T4N, R69W.
 ENRIGHT 3N TO BE AT 739' FSL & 2239' FEL.
 BOTTOM HOLE AT 2073' FSL & 460' FEL, SEC. 17, T4N, R68W.
 ENRIGHT 4N TO BE AT 711' FSL & 2239' FEL.
 BOTTOM HOLE AT 2212' FSL & 460' FWL, SEC. 13, T4N, R69W.
 ENRIGHT 5N TO BE AT 683' FSL & 2239' FEL.
 BOTTOM HOLE AT 1486' FSL & 460' FEL, SEC. 17, T4N, R68W.
 ENRIGHT 6N TO BE AT 655' FSL & 2239' FEL.
 BOTTOM HOLE AT 1882' FSL & 460' FWL, SEC. 13, T4N, R69W.
 ENRIGHT 7N TO BE AT 627' FSL & 2239' FEL.
 BOTTOM HOLE AT 1192' FSL & 460' FEL, SEC. 17, T4N, R68W.
 ENRIGHT 8C TO BE AT 599' FSL & 2240' FEL.
 BOTTOM HOLE AT 1552' FSL & 460' FWL, SEC. 13, T4N, R69W.
 ENRIGHT 9N TO BE AT 571' FSL & 2240' FEL.
 BOTTOM HOLE AT 900' FSL & 460' FEL, SEC. 17, T4N, R68W.
 ENRIGHT 10N TO BE AT 543' FSL & 2240' FEL.
 BOTTOM HOLE AT 1222' FSL & 460' FWL, SEC. 13, T4N, R69W.
 ENRIGHT 11C TO BE AT 515' FSL & 2240' FEL.
 BOTTOM HOLE AT 605' FSL & 460' FEL, SEC. 17, T4N, R68W.
 ENRIGHT 12N TO BE AT 487' FSL & 2241' FEL.
 BOTTOM HOLE AT 892' FSL & 460' FWL, SEC. 13, T4N, R69W.
 ENRIGHT 13N TO BE AT 459' FSL & 2241' FEL.
 BOTTOM HOLE AT 312' FSL & 460' FEL, SEC. 17, T4N, R68W.
 ENRIGHT 14N TO BE AT 431' FSL & 2241' FEL.
 BOTTOM HOLE AT 562' FSL & 460' FWL, SEC. 13, T4N, R69W.
 ENRIGHT 15N TO BE AT 403' FSL & 2241' FEL.
 BOTTOM HOLE AT 19' FSL & 460' FEL, SEC. 17, T4N, R68W.
 ENRIGHT 16C TO BE AT 375' FSL & 2241' FEL.
 BOTTOM HOLE AT 232' FSL & 460' FWL, SEC. 13, T4N, R69W.

LEGEND

-  = EXISTING MONUMENT  = CALCULATED POSITION
 = PROPOSED WELL  = BOTTOM HOLE
 = EXISTING WELL  = LANDING POINT
LP = LANDING POINT
BHL = BOTTOM HOLE LOCATION

NOTES:

1. THIS FIELD SURVEY CONFORMS TO THE MINIMUM STANDARDS SET BY THE C.O.G.C.C., RULE NO. 215
2. BEARINGS AND DISTANCE SHOWN HEREON ARE GRID AND BASED ON THE COLORADO STATE PLANE COORDINATE SYSTEM, NAD 83/2011 BETWEEN MONUMENTS AS LABELED HEREON AND ELEVATIONS SHOWN ARE NAVD 88, AS DERIVED BY GPS OBSERVATIONS.
3. GRID DISTANCES ARE SHOWN, AS MEASURED IN THE FIELD, WITH TIES TO WELLS MEASURED PERPENDICULAR TO SECTION LINES.



7535 Hilltop Circle
Denver, CO 80221
(303) 928-7128
www.ascentgeomatics.com

DRAWING DAT

BY	C
----	---

10

F.

CHECKED BY:

ENRIGHT

SURFACE LOCATION:

SW 1/4 SE 1/4 S

WELD COUNTY, COLORADO

Page 10 of 10