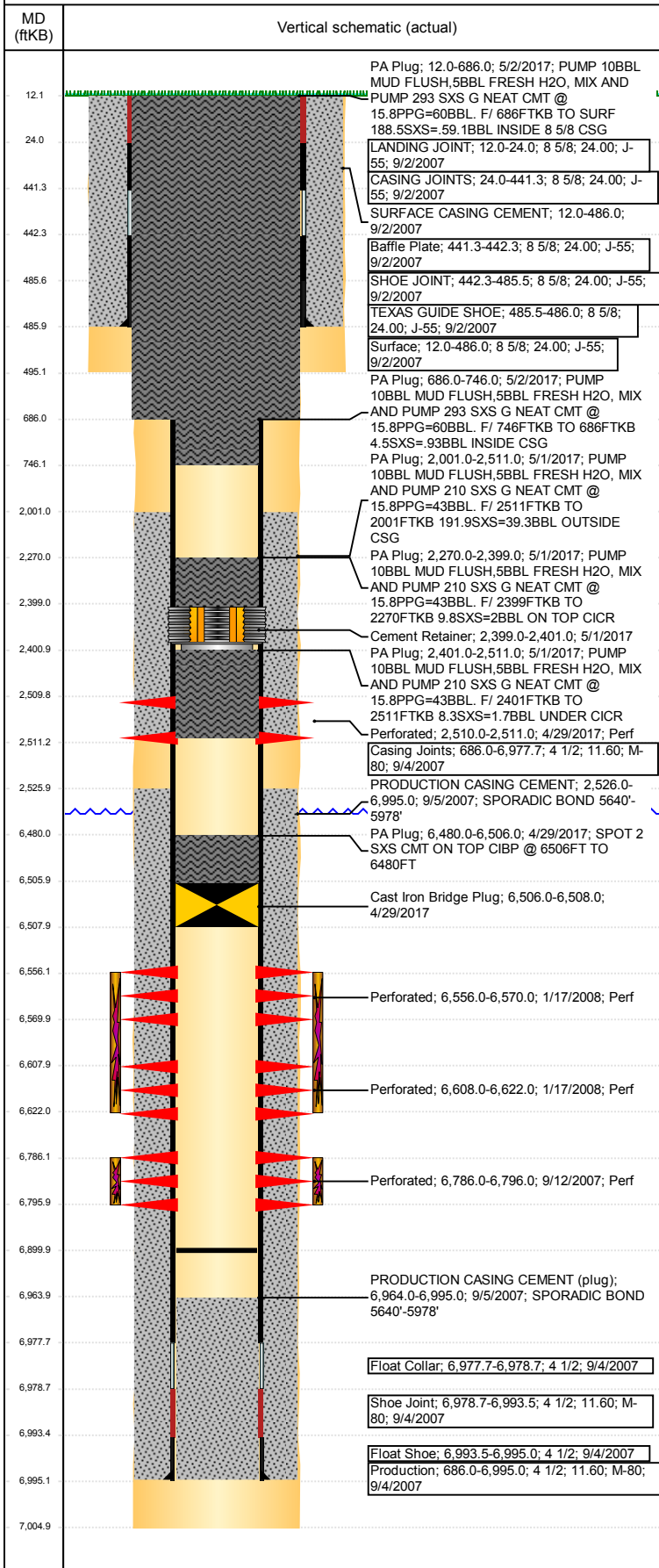


**Well Name: WELLS RANCH USX BB05-11**

VERTICAL - ORIGINAL HOLE, 5/22/2017 1:34:43 PM



## Well Header

API 05-123-26211	Business Unit DJ BASIN	District 15	Well Config VERTICAL
Original KB Elevation (ft) 4,716	KB - GL / MSL (ftKB) 12.00	Spud Date 9/1/2007	P & A Date 5/2/2017

## Comment

TD DISCREPANCY: LOGGERS TD 7005', DRILLERS AND STATE RPT 6998'

## Directions To Well

From WCR 67 & WCR 68, East .2 mile, South 2.5 miles to Cow Camp, Southwest .5 mile, South 1 mile, West 1.75 mile, North .1 mile, Northeast .1 mile to location

## Congressional Location

Quarter 3 NE	Quarter 4 SW	Section 5	Township 5	Twnshp N/S Dir N	Range 63	Range E/W Dir W
-----------------	-----------------	--------------	---------------	---------------------	-------------	--------------------

## Bottom Hole Location

North-South Distance (ft)	From N or S Line	East-West Distance (ft)	From E or W Line
---------------------------	------------------	-------------------------	------------------

## Plug Back Total Depths

Date	Depth (ftKB)	Method	Com
9/5/2007	6,977.7	CASING TALLY	TOP OF FLOAT COLLAR
9/11/2007	6,964.0	CASED HOLE LOG	DEPTH LOGGER ON CBL
3/31/2008	6,900.0	TUBING TALLY	CHASED CIFT DOWN TO 6900'

## Wellbore Sections

Section Des	Size (in)	Act Top, MD (ftKB)	Act Btm, MD (ftKB)
SURFACE	12 1/4	12	495
PRODUCTION	7 7/8	495	7,005

## Zone Statuses

Zone Name	Status Date	Status	Fluid Type	Job	Prod Method
NIOBRARA	1/21/2008	PR		DRILLING/CO...	
NIOBRARA	4/29/2017	P&A		PLUG AND AB...	
CODELL	1/21/2008	PR		DRILLING/CO...	
CODELL	4/29/2017	P&A		PLUG AND AB...	

## Casing Strings

### Surface, 486.0ftKB

Casing Description	Run Date	OD (in)	Wt/Len (l...)	Grade	Top, MD (ft...)	MD (ftKB)
Surface	9/2/2007	8 5/8	24.00	J-55	12.0	486.0

### Production, 6,995.0ftKB

Casing Description	Run Date	OD (in)	Wt/Len (l...)	Grade	Top, MD (ft...)	MD (ftKB)
Production	9/4/2007	4 1/2	11.60	M-80	12.0	6,995.0

## Cement

Description	Top Depth (ftKB)	Bottom Depth (ftKB)
SURFACE CASING CEMENT	12.0	486.0
PRODUCTION CASING CEMENT	2,526.0	6,995.0
PA Plug	6,480.0	6,506.0
PA Plug	2,270.0	2,399.0
PA Plug	2,401.0	2,511.0
PA Plug	2,001.0	2,511.0
PA Plug	686.0	746.0
PA Plug	12.0	686.0

## Tubing Strings

Tubing Description	Run Date	String...	ID (in)	Wt (lb/ft)	Grade	Len (ft)	Set De...
Tubing - Production	4/1/2008	2 3/8	2.00	4.70	J-55	6,763.33	

## Other In Hole

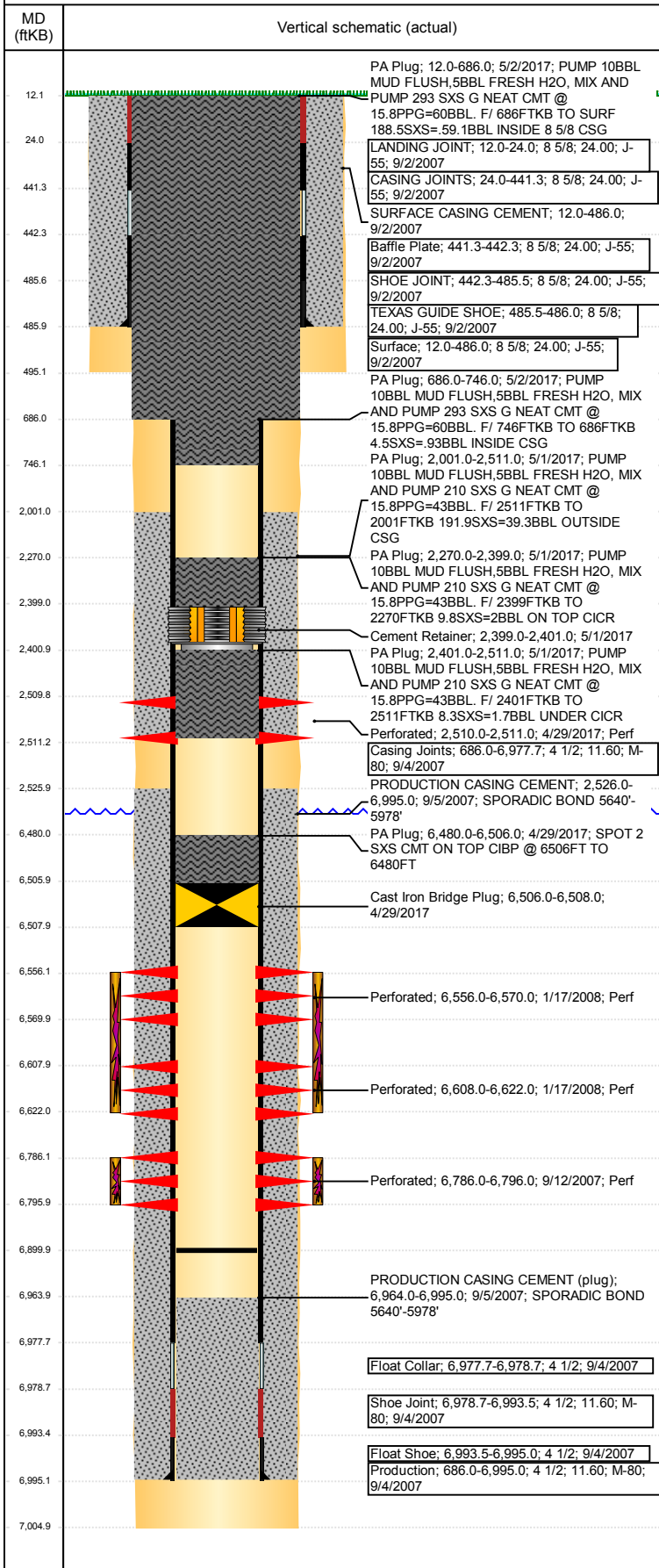
Run Date	Des	OD (in)	Top (ftKB)	Btm (ftKB)
4/29/2017	Cast Iron Bridge Plug	3.99	6,506.0	6,508.0
5/1/2017	Cement Retainer	3.99	2,399.0	2,401.0

## Logs

Date	Type	Top, MD (ftKB)	Btm, MD (ftKB)
9/4/2007	COMPENSATED DENSITY	2,600.0	6,985.0
9/4/2007	INDUCTION	486.0	6,998.0
9/11/2007	CBL/CCL/GR	2,400.0	6,962.0
5/14/2015	GYRO	12.0	6,700.0

**Well Name: WELLS RANCH USX BB05-11**

VERTICAL - ORIGINAL HOLE, 5/22/2017 1:34:44 PM



## Perforation Data

Linked Zone	Bnch/St g	Sum of Entered Shot Total	Top (ftKB)	Btm (ftKB)	Date
CODELL, ORIGINAL HOLE		6	2,510.00	2,511.00	4/29/2017
NIOBRARA, ORIGINAL HOLE	A	56	6,556.00	6,570.00	1/17/2008
NIOBRARA, ORIGINAL HOLE	B	56	6,608.00	6,622.00	1/17/2008
CODELL, ORIGINAL HOLE		40	6,786.00	6,796.00	9/12/2007
<b>Total (Sum)</b>		<b>158</b>			

## Stimulation Intervals

Start Date 1/17/2008	Primary Job Type DRILLING/COMPLETION - ORIGINAL	
Technical Result Success	Tech Result Details According to Plan	Tech Result Note
Comment (Codell): A good overall treatment. Nolte Slope: The treatment exhibited a flat pressure response throughout the sand laden stages of the treatment.		
Start Date 1/17/2008	Primary Job Type DRILLING/COMPLETION - ORIGINAL	
Technical Result Failure	Tech Result Details Mechanical	Tech Result Note
Comment (Niobrara): Early issues with pumps and wellhead valve. The Deck engine on the blender started having issues at the end of the 3.0 ppg sand stage. Deck engine was able to be restarted and treatment was able to be walk back up to 4.0 ppg sand when the deck engine was lost again and the well was flushed 52,000 lbs of 4.0 ppg sand short.		
Nolte Slope: The treatment exhibited a slightly positive trend throughout throughout the sand laden stages (Nolte = 0.077).		