



May 15, 2017

Colorado Oil and Gas Conservation Commission
1120 Lincoln Street, Suite 801
Denver, CO 80203

RE: Proposed Wellbore Spacing Unit
Raindance FD 20-362HNX
Niobrara New Drill
NENE Sec. 30, Township 6N, Range 67W
Weld County, Colorado

Dear Director Lepore,

Great Western Operating Company, LLC (Great Western) is planning to drill the above captioned well in accordance with the provisions of Colorado Oil and Gas Conservation Commission (COGCC) Rule 318A.e.

Great Western's proposed wellbore spacing unit consists of:

Township 6 North, Range 67 West (Weld County):
Section 19: SESE
Section 20: S2S2

Total Acres: 200 ac

The 30 day notification time period has passed and we have not yet received any objections to such well locations or proposed spacing unit, therefore Great Western hereby requests the Director to approve the above mentioned well. Great Western respectfully requests the COGCC review the enclosed map illustrating the proposed wellbore spacing unit.

Respectfully,

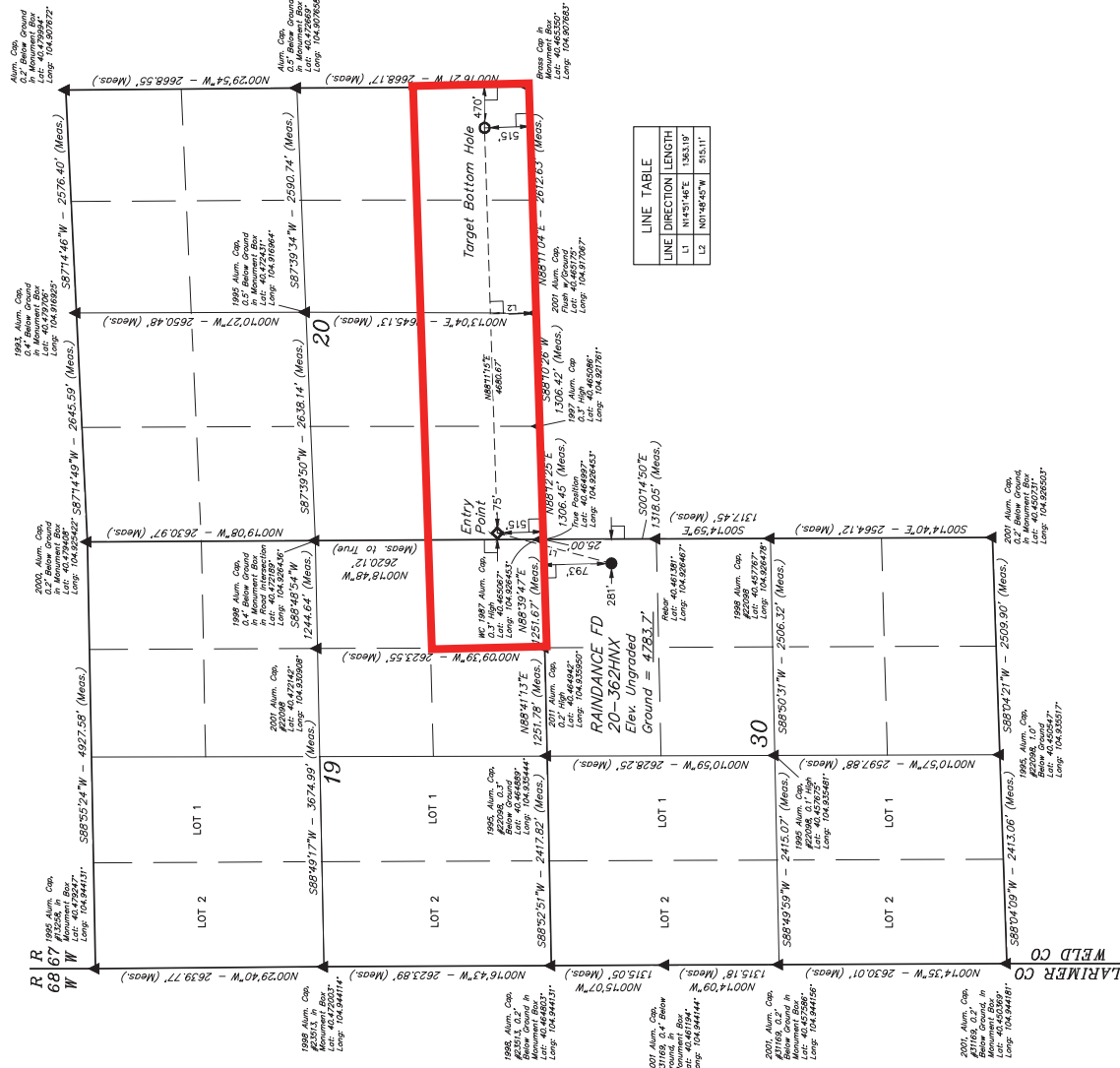
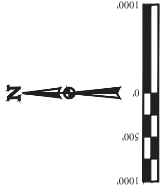
Ashley Noonan

Ashley Noonan
Senior Regulatory Analyst
Great Western Operating Company, LLC

T6N, R67W, 6th P.M.

GREAT WESTERN OPERATING COMPANY
RAINANCE FD 20-362HXX
NE 1/4 NE 1/4, SECTION 30, T6N, R67W, 6th P.M.
WELD COUNTY, COLORADO

THIS SURVEY IS BASED ON THE
BASIS OF BEARINGS AND DISTANCES
BASIS OF ELEVATION
USGS COOPERATIVE BASE NETWORK CONTROL STATION
DESIGNATION "VERMILYEA". NGS DATA SHEET LISTS THE
NAD 83 ELEVATION AS BEING 5629 FEET.



LINE TABLE		
LINE	DIRECTION	LENGTH
L1	N45°46'E	1.56319'
L2	N07°48'45"W	515.117'

LEGEND:
= 90° SWIREL
= PROPOSED WELLSHEAD
= TARGET BOTTOM HOLE
= SECTION CORNERS LOCATED (NAD 83)
= SECTION CORNERS RE-ESTABLISHED
(Not Set on Ground) (NAD 83)

POOP = 1.5	
NAD 83 SURFACE LOCATION	NAD 83 ENTRY POINT
POINT OF BEGINNING (POB) LONGITUDE = 104°58'34.97" (104.973160) LATITUDE = 40°27'58.17" (40.466436) ELEVATION = 5629.00'	POINT OF BEGINNING (POB) LONGITUDE = 104°58'34.97" (104.973160) LATITUDE = 40°27'58.17" (40.466436) ELEVATION = 5629.00'
NAD 83 SURFACE LOCATION	NAD 83 TARGET BOTTOM HOLE
POINT OF BEGINNING (POB) LONGITUDE = 104°58'34.97" (104.973160) LATITUDE = 40°27'58.17" (40.466436) ELEVATION = 5629.00'	POINT OF BEGINNING (POB) LONGITUDE = 104°58'34.97" (104.973160) LATITUDE = 40°27'58.17" (40.466436) ELEVATION = 5629.00'

JUNTAH
SURVEYING & MAPPING, LLC
1000 E. 10th St., Suite 200
Fort Collins, CO 80504
Phone: 970.225.1111
Fax: 970.225.1112
www.juntahsurvey.com

CERTIFIED AND REGISTERED
TO THE STATE OF COLORADO
JUL 19 2023
RENEWAL DATE: JUL 19 2026
STATE OF COLORADO
LAND SURVEYING
STATION NO. 16

REV:3 10-26-16 K.B. (SHL:EP:TBH&NAME CHANGE)

UTLS LLC
Corporate Office: 45 South 200 East
Vernal, UT 84078 • (435) 798-1017

DRAWN BY: CHAD MEHRES, L.C.
K.B.
DATE: 10-11-16
SCALE: 1" = 1000'

WELL LOCATION PLAT