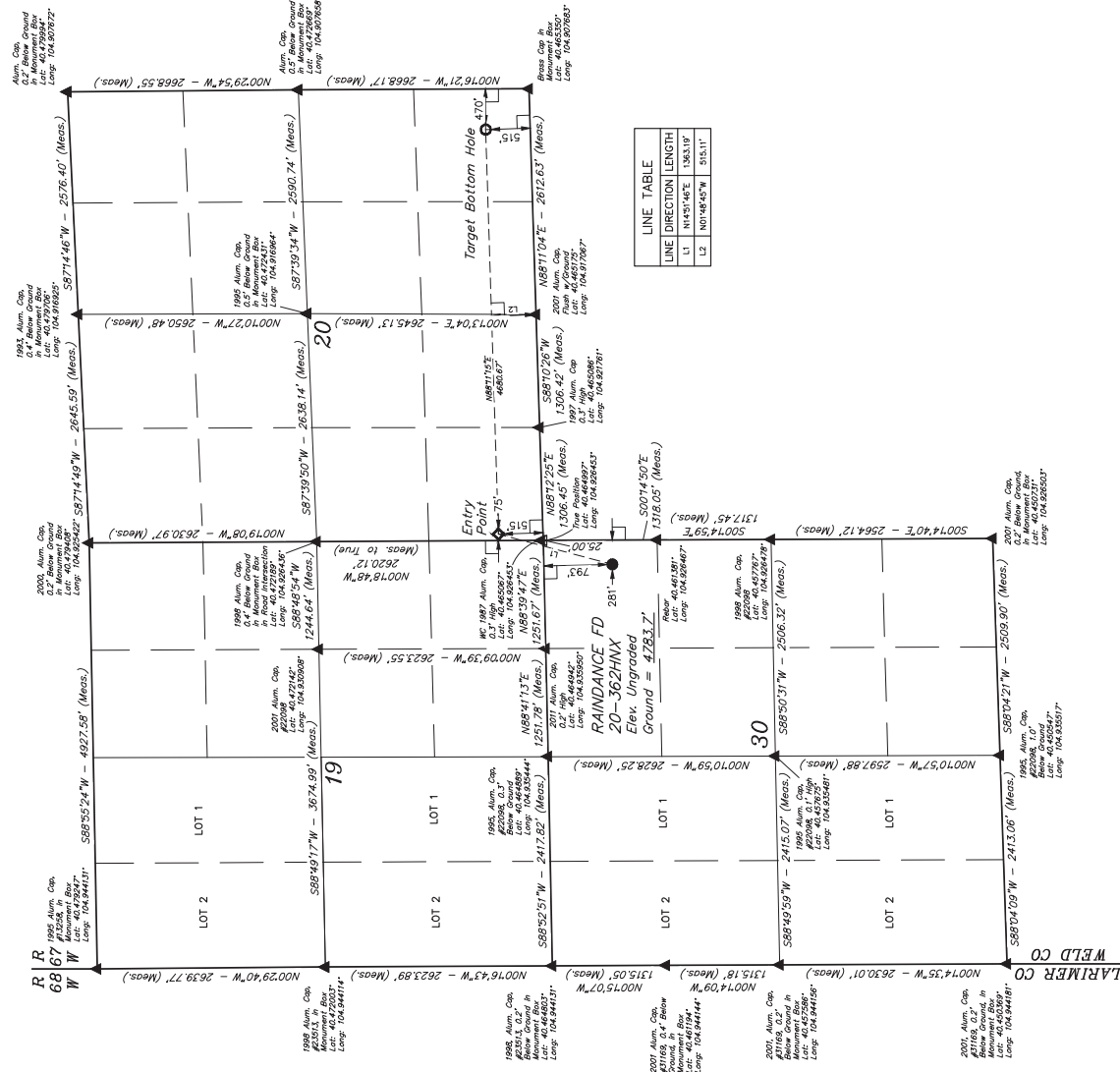


GREAT WESTERN OPERATING COMPANY
 RANDANCE FD 20-362HNX
 NE 1/4 NE 1/4, SECTION 30, T6N, R67W, 6th P.M.
 WELD COUNTY, COLORADO

T6N, R67W, 6th P.M.

BASIS OF BEARINGS
BASIS OF BEARINGS IS A G.P.S. OBSERVATION

BASIS OF ELEVATION
USGS COOPERATIVE BASE NATION CONTROL STATION,
DESIGNATION "VERMILYEA". NGS DATA SHEET LISTS
THE NAVD 88 ELEVATION AS BEING 5026 FEET.



LINE TABLE		
LINE	DIRECTION	LENGTH
L1	N14°51'46"E	1363.19'
L2	N01°48'45"W	515.11'

THIS IS TO CERTIFY THAT THE ABOVE
 IS A TRUE AND CORRECT COPY
 OF THE RECORD AS THE SAME IS
 IN THE RECORDS OF THE
 COUNTY OF [] AND STATE OF []
 AND THAT THE SAME ARE TRUE AND
 CORRECT AS THE SAME ARE IN THE
 RECORDS OF THE COUNTY OF []
 AND STATE OF [] AND BELIEVE

CERTIFICATE

RECORDED
 NO. 2825
 STATE OF []

THE CLERK OF THE COUNTY OF []

16

REV: 3 10-26-16 K.B. (SHL, EP, TBH & NAME CHANGE)

JINTAH
 INTERNATIONAL & LOCAL SERVICES GROUP
 UEL S, LLC
 Corporate Office • 85 South 200 East
 Vernal, UT 84078 • (435) 789-1017

DESIGNED BY	CHAD MEIERS, J.C.	10-14-16	SCALE
DRAWN BY	K.B.	02-25-16	1" = 1000'

WELL LOCATION PLAT

		PDOP = 1.5	
NAD83(SURFACE LOCATION)	NAD83(ENTRY POINT)	NAD83(TARGET LOCATION)	NAD83(TARGET ENTRY POINT)
LATITUDE = 40°27'46.11" (40.462808)	LATITUDE = 40°27'50.10" (40.466417)	LATITUDE = 40°28'00.33" (40.466731)	LATITUDE = 40°28'00.33" (40.466731)
LONGITUDE = 40°55'38.90" (40.927469)	LONGITUDE = 40°55'34.25" (40.926181)	LONGITUDE = 40°54'33.22" (40.909352)	LONGITUDE = 40°54'33.22" (40.909352)
NAD27(SURFACE LOCATION)	NAD27(ENTRY POINT)	NAD27(TARGET LOCATION)	NAD27(TARGET ENTRY POINT)
LATITUDE = 40°27'46.11" (40.462825)	LATITUDE = 40°27'50.17" (40.466436)	LATITUDE = 40°28'00.37" (40.466750)	LATITUDE = 40°28'00.37" (40.466750)
LONGITUDE = 40°55'36.98" (40.926939)	LONGITUDE = 40°55'32.34" (40.925650)	LONGITUDE = 40°54'31.50" (40.908839)	LONGITUDE = 40°54'31.50" (40.908839)

○ - SET SYMBOL
 ○ - PROPOSED WELLHEAD
 ○ - TARGET BOTTOM HOLE
 ○ - ENTRY POINT
 ○ - SECTION CORNERS LOCATED (NAD 83)
 △ - SECTION CORNERS RE-ESTABLISHED

—