

**Federal 11-90-15 #1:**

- (1A) (existing well location)  
 39.09424° N 548 FSL  
 107.43781° W 1527 FWL

**Federal 11-90-15 #2:**

- (2A) Surface Location  
 39.09428° N 562 FSL  
 107.43783° W 1522 FWL  
 (2B) Bottom Hole Location  
 39.10308° N 1495 FNL  
 107.44771° W 1277 FEL

**Federal 11-90-15 #3:**

- (3A) Surface Location  
 39.09432° N 575 FSL  
 107.43785° W 1516 FWL  
 (3B) Bottom Hole Location  
 39.09482° N 739 FSL  
 107.42675° W 631 FEL

**Federal 11-90-15 #3L1:**

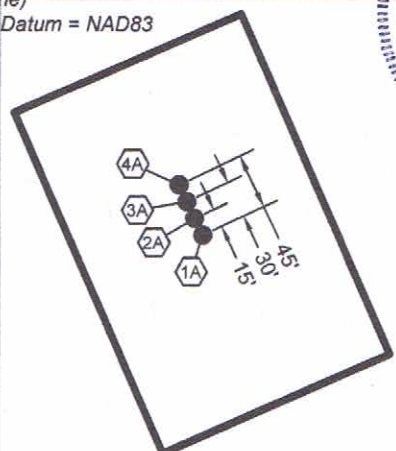
- (3C) Estimated Top of Production  
 39.09463° N 688 FSL  
 107.43702° W 1752 FWL  
 (3D) Bottom Hole Location  
 39.09846° N 2065 FSL  
 107.42645° W 545 FEL

**Federal 11-90-15 #4:**

- (4A) Surface Location  
 39.09435° N 589 FSL  
 107.43788° W 1509 FWL  
 (4B) Bottom Hole Location  
 39.08767° N 1871 FNL  
 107.42683° W 663 FEL

**Note:**

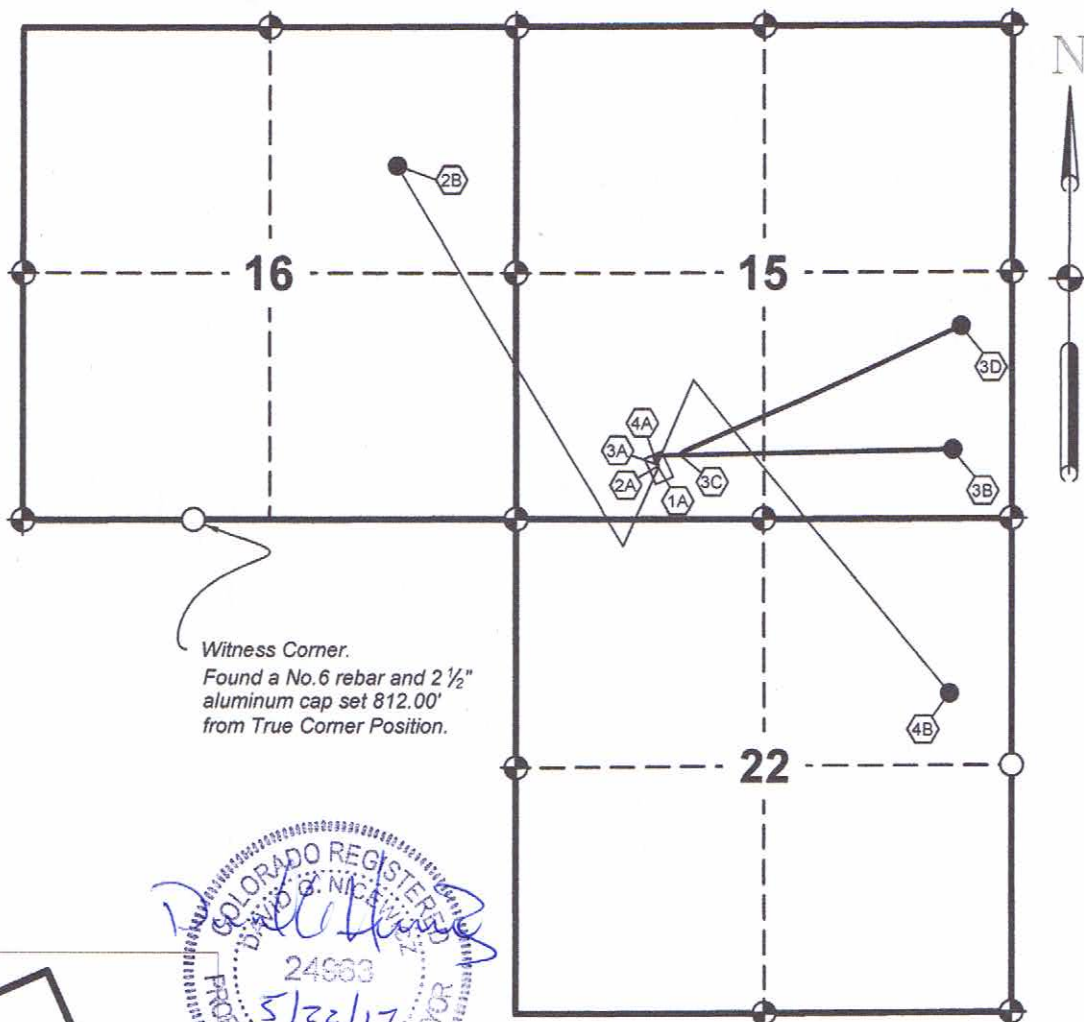
- ~ FNL, FSL, FEL and FWL is the footage to the nearest section line measured perpendicularly. (i.e. feet North to Line)  
 ~ Horizontal Datum = NAD83

**SURFACE LOCATION DETAIL:**

Not to Scale

0' 2000' 4000' 6000'

Scale: 1" = 2000 U.S. Survey feet

**LEGEND**

- ◆ ~ FOUND ORIGINAL STONE
- ⊙ ~ FOUND GLO BRASS CAP ON STEEL POST
- ⊕ ~ FOUND REBAR AND CAP BY LS15710
- ⊗ ~ FOUND No.6 REBAR WITH A 2 1/2" ALUMINUM CAP, LS24963
- ~ WELL FEATURES

**MULTIWELL LOCATION PLAT**

SG INTEREST I, LTD.

FEDERAL 11-90-15 #1, 2, 3, 3L1 &amp; 4

Located in the SW 1/4 of Section 15, T. 11 S., R. 90 W.,  
 Sixth P.M., Gunnison County, Colorado

SURVEYED BY: DGN	DWG DATE: 05/19/2017	AECOM David G. Nicewicz, PLS 804 Colorado Ave, Suite 201 Glenwood Springs Co 81610 cell: (720) 456-1104 email: david.nicewicz@aecom.com
DRAFTED BY: MLD	SCALE: 1" = 2000'	
JOB NO.: 22243490.01000	SHEET NO. 1 of 1	