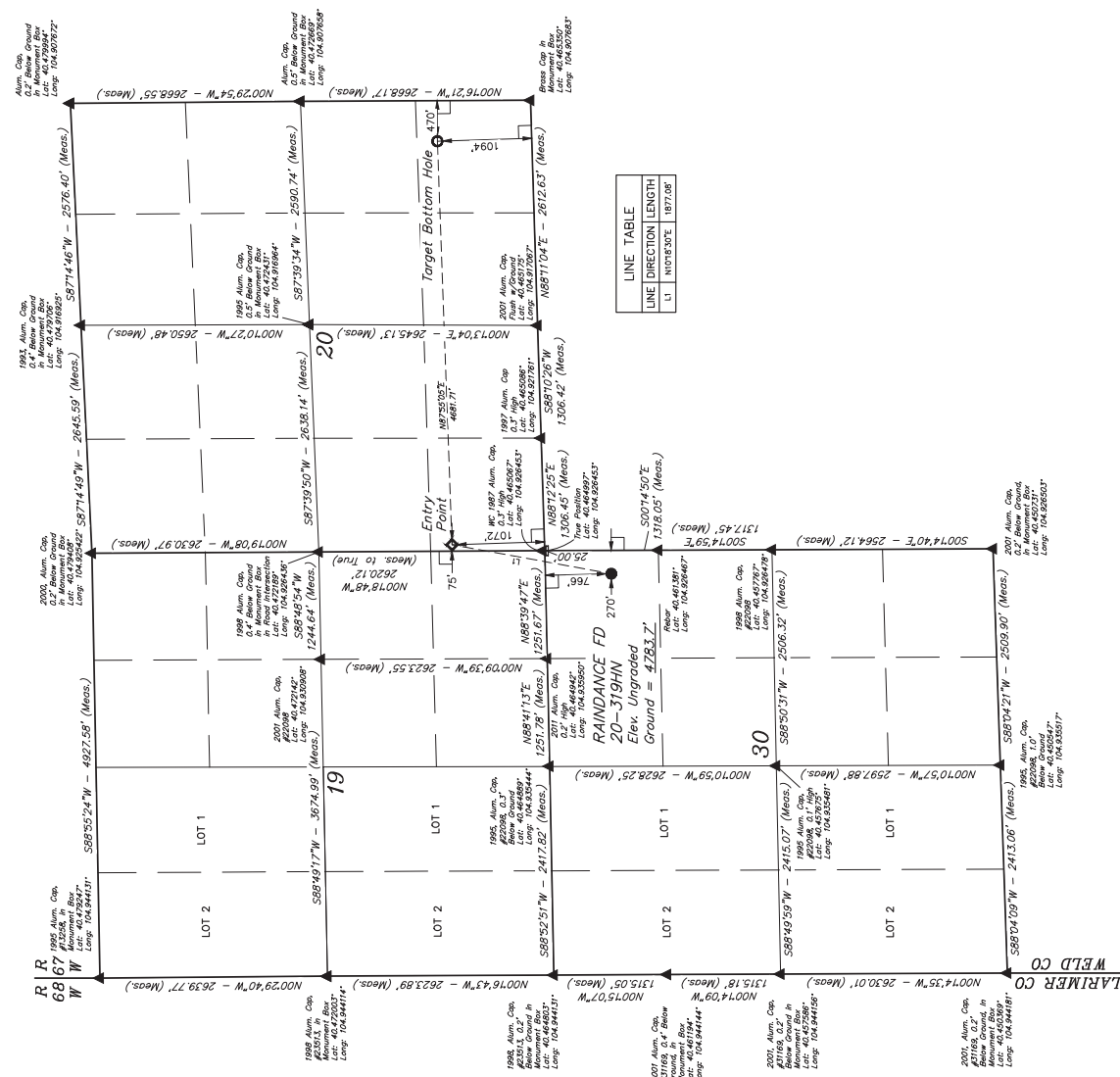
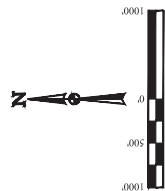


GREAT WESTERN OPERATING COMPANY
RAINDANCE FD 20-319HN
NE 1/4 NE 1/4, SECTION 30, T6N, R67W, 6th P.M.
WELD COUNTY, COLORADO

T6N, R67W, 6th P.M.

BASIS OF BEARINGS
BASIS OF BEARINGS IS A G.P.S. OBSERVATION
BASIS OF ELEVATION
USGS COOPERATIVE BASE NETWORK CONTROL STATION,
DESIGNATION "VERMILYEA." NGDS DATA SHEET LISTS THE
NAVD 88 ELEVATION AS BEING 5026 FEET.



LINE TABLE		
LINE	DIRECTION	LENGTH
L1	N107°6'30"E	1877.06'


THIS IS TO CERTIFY THAT THE ABOVE
NOTES OF ACTUAL SURVEYS MADE
AND THAT THE SAME ARE TRUE AT
KNOWLEDGE AND BELIEF.

REV: 3 10-26-16 K.B. (SHL, EP, TBH & NAME CHANGE)


JINTAH
 ENGINEERING & CONSTRUCTION, INC.
 UELS, LLC
 Corporate Office • 85 South 200 East
 Vernal, UT 84078 • (435) 789-1017
 SURVEYED BY CHAD MEIERS, J.C.
 DRAWN BY K.B.
 SCALE 1" = 1000'
WELL LOCATION PLAT

[illegible]

LEGEND:

-  = 80° SYMBOL
-  = PROPOSED WELLHEAD.
-  = TARGET BOTTOM HOLE.
-  = ENTRY POINT.
-  = SECTION CORNERS LOCATED. (NAD 83)
-  = SECTION CORNERS RE-ESTABLISHED.

	UN-29.20.84	UN-29.22.31	UN-29.26.01	UN-29.31.00	UN-29.35.31
(Not Set on Ground) (MAD 8.5)	UN-29.20.84	UN-29.22.31	UN-29.26.01	UN-29.31.00	UN-29.35.31