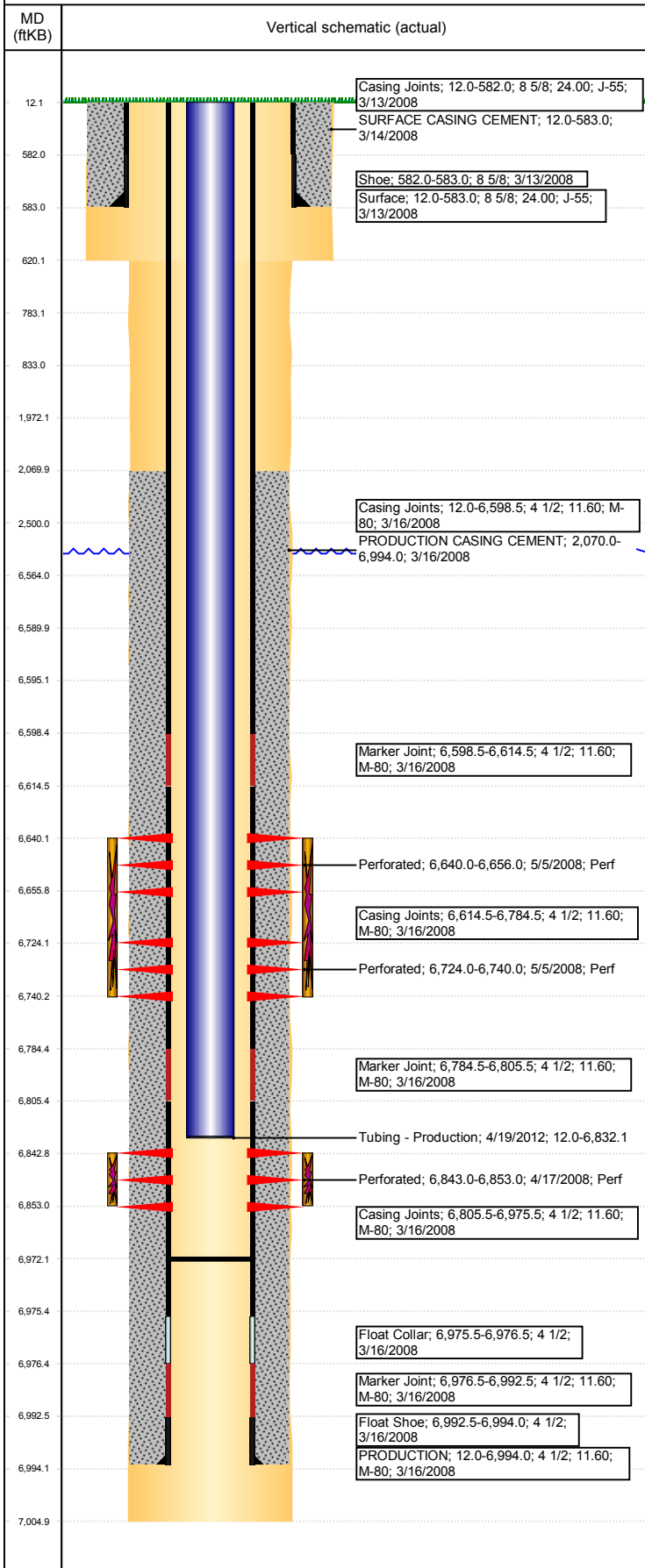


Operations Wellbore Schematic Report

Well Name: WELLS RANCH AA26-04

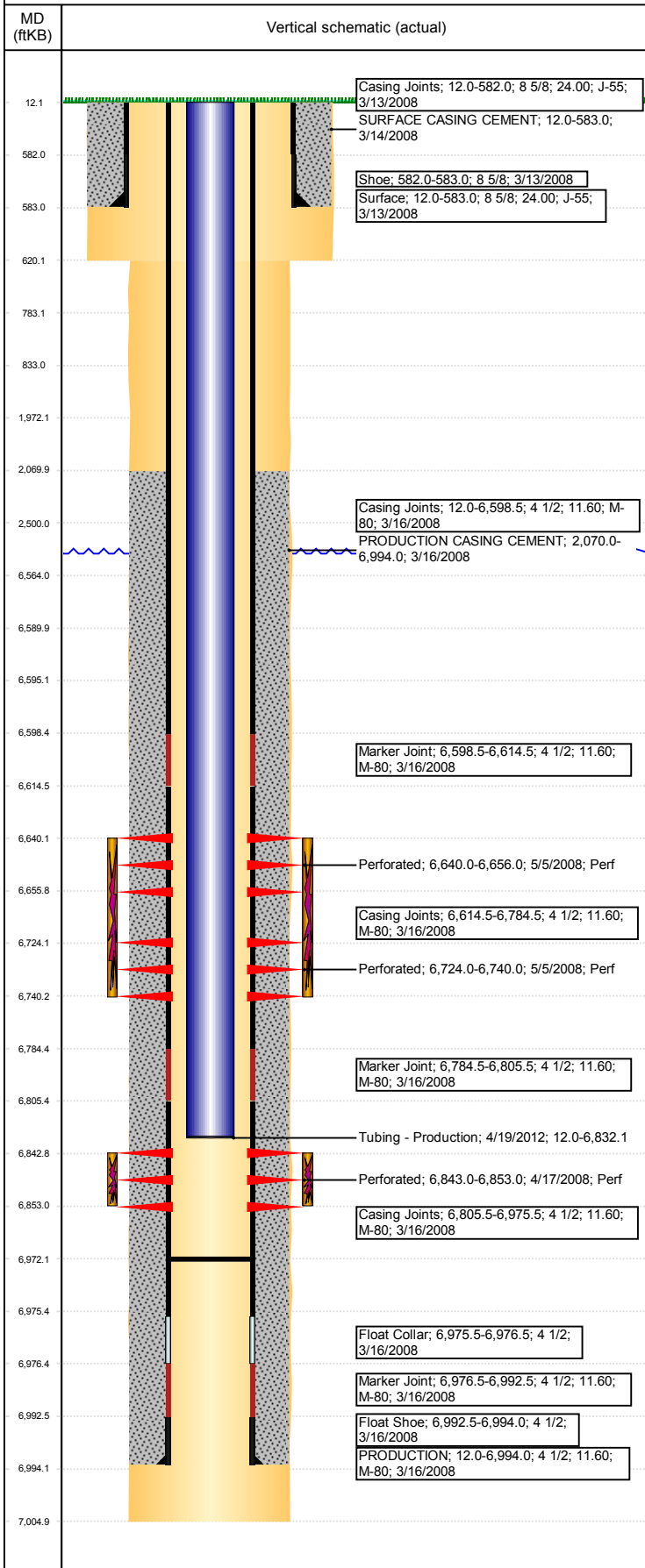
VERTICAL - ORIGINAL HOLE, 5/21/2017 8:47:47 AM



Well Header						
API 05-123-25382	Business Unit DJ BASIN	District 15	Well Config VERTICAL			
Original KB Elevation (ft) 4,830	KB - GL / MSL (ftKB) 12.00	Spud Date 3/14/2008		P & A Date		
Comment						
Directions To Well WCR 68 & 67, E .2, S 1.75, E .75, N .5, NW INTO LOCATION.						
Current PBTD (mKB) ORIGINAL HOLE - 6,972.0						
Surface Location (Congressional)						
Quarter 3 NW	Quarter 4 NW	Section 26	Township 6	Twnshp N/S Dir N	Range 63	Range E/W Dir W
Bottom Hole Location						
North-South Distance (ft) 516.0		From N or S Line FNL		East-West Distance (ft) 626.0		From E or W Line FWL
Plug Back Total Depths						
Date	Depth (ftKB)	Method		Com		
3/16/2008	6,976.0	CASING TALLY		DEPTH LOGGER ON CBL DRILL CIFTP AND CHASE TO 6972' W/ 223 JTS		
4/4/2008	6,963.0	TAG				
5/13/2008	6,972.0	TUBING TALLY				
Wellbore Sections						
Section Des		Size (in)		Act Top, MD (ftKB)		Act Btm, MD (ftKB)
SURFACE		12 1/4		12		620
PRODUCTION		7 7/8		620		7,005
Zone Statuses						
Zone Name	Status Date	Status	Fluid Type	Job		Prod Method
CODELL	6/19/2008	PR	Water	DRILLING/COMPLETION - ORIGINAL, 3/14/2008...		Flowing
CODELL	2/5/2010	PR		DRILLING/COMPLETION - ORIGINAL, 3/14/2008...		
NIOBRARA	6/19/2008	PR	Water			Flowing
NIOBRARA	2/5/2010	PR				
NIOBRARA	1/26/2015	PR				
Casing Strings						
Csg Des	Run Date	OD (in)	Wt/Len (lb/ft)	Grade	Top, MD (ftKB)	MD (ftKB)
Surface	3/13/2008	8 5/8	24.00	J-55	12.0	583.0
PRODUCTION	3/16/2008	4 1/2	11.60	M-80	12.0	6,994.0
Cement						
Des				Top (ftKB)		Btm (ftKB)
SURFACE CASING CEMENT				12.0		583.0
PRODUCTION CASING CEMENT				2,070.0		6,994.0
Tubing Components						
Item Des		OD (in)	Wt (lb/ft)	Grade	Jts	Len (ft)
Perforation Data						
Linked Zone	Bnch/Stg	Sum of Entered Shot Total	Top (ftKB)	Btm (ftKB)	Date	
NIOBRARA, ORIGINAL HOLE	A	64	6,640.00	6,656.00	5/5/2008	
NIOBRARA, ORIGINAL HOLE	B	64	6,724.00	6,740.00	5/5/2008	
CODELL, ORIGINAL HOLE		40	6,843.00	6,853.00	4/17/2008	
Total (Sum)		168				
Other In Hole						
Run Date	Des			OD (in)	Top (ftKB)	Btm (ftKB)
5/13/2008	Cast Iron Bridge Plug			3.99	6,590.0	6,595.0
Logs						
Date	Type			Top, MD (ftKB)	Btm, MD (ftKB)	
3/16/2008	COMPENSATED DENSITY			2,750.0	6,984.0	
3/16/2008	INDUCTION			595.0	7,004.0	
4/4/2008	CBL/CCL/GR			1,990.0	6,956.0	
1/9/2012	GYRO			12.0	6,800.0	

Well Name: WELLS RANCH AA26-04

VERTICAL - ORIGINAL HOLE, 5/21/2017 8:47:47 AM



Stimulation Intervals				
Bnch/Stg	Start Date	Primary Job Type		
	5/2/2008	DRILLING/COMPLETION - ORIGINAL		
Comment (CODELL)				
Volume Slurry Total (gal)				
142,286.35				
Treat Pressure Avg (psi)	Treat Pressure Max (psi)		Slurry Rate Avg (bbl/min)	Slurry Rate Max (bbl/min)
4,110.0	4,699.0		18.9	19.1
Bnch/Stg	Start Date	Primary Job Type		
A & B	5/7/2008	DRILLING/COMPLETION - ORIGINAL		
Comment				
FRAC THE NIOBRARA - NO PROBLEMS TO REPORT				
Volume Slurry Total (gal)				
184,858.81				
Treat Pressure Avg (psi)	Treat Pressure Max (psi)		Slurry Rate Avg (bbl/min)	Slurry Rate Max (bbl/min)
4,787.0	4,966.0		51.6	52.7