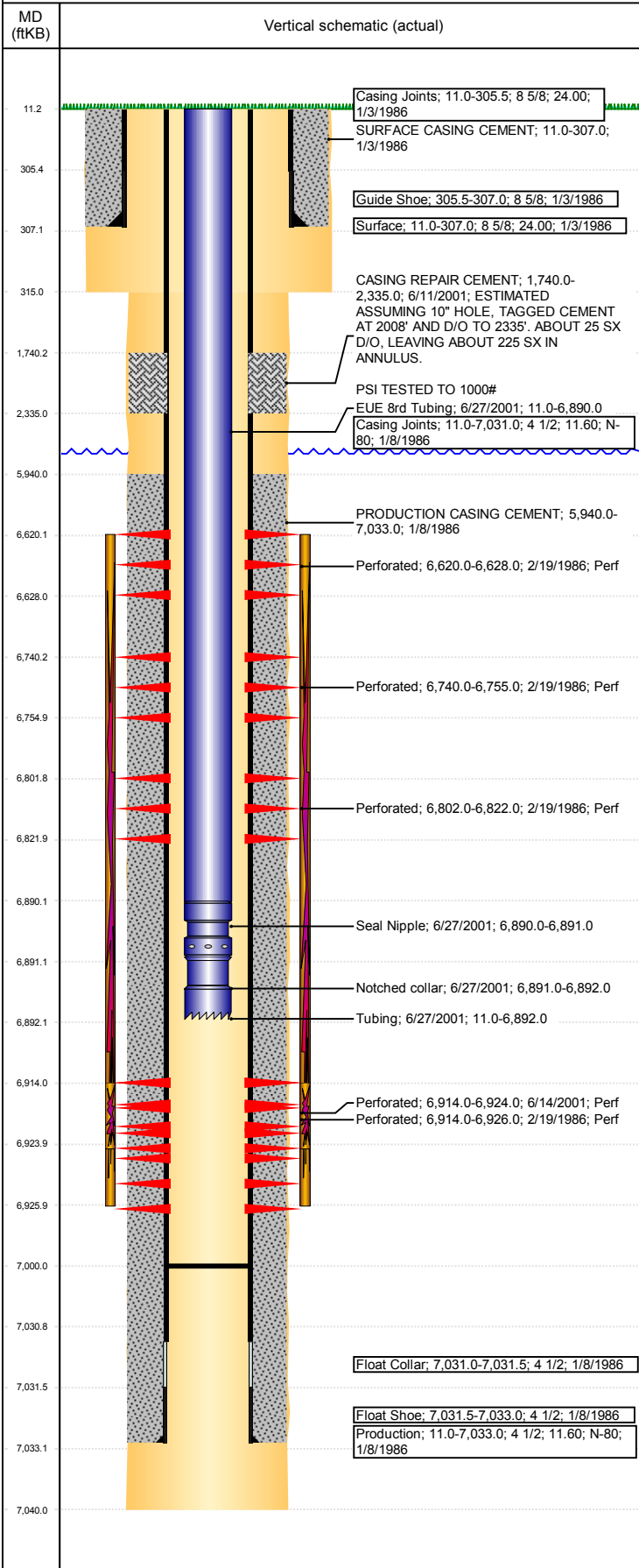


Well Name: FOE 16-20

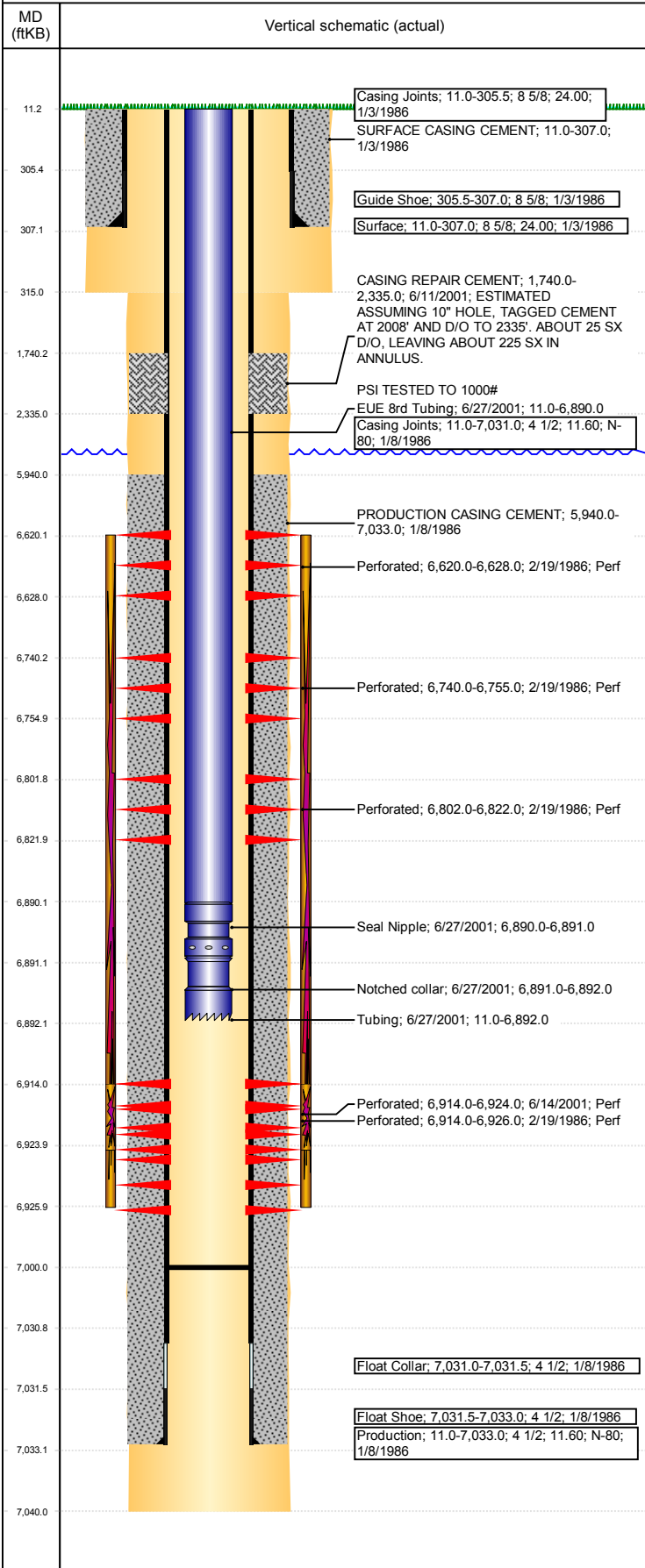
VERTICAL - ORIGINAL HOLE, 5/21/2017 9:15:48 AM



Well Header			
API	Business Unit	District	Well Config
05-123-12828	DJ BASIN	15	VERTICAL
Original KB Elevation (ft)	KB - GL / MSL (ftKB)	Spud Date	P & A Date
4,721	11.00	1/3/1986	
Comment			
FOUND HIC FROM 2173 TO 2330; SQZ'D HIC W/ 250 SX G NEAT CEMENT IN 2001. CEMENT STAGE ESTIMATED FROM 1740' TO 2335', NEED TO RUN CBL			
Directions To Well			
Current PBTD (mKB)			
ORIGINAL HOLE - 7,000.0			
Surface Location (Congressional)			
Quarter 3	Quarter 4	Section	Township
SE	SE	20	6
Twnshp N/S Dir	Range	Range E/W Dir	
N	64	W	
Bottom Hole Location			
North-South Distance (ft)	From N or S Line	East-West Distance (ft)	From E or W Line
Plug Back Total Depths			
Date	Depth (ftKB)	Method	Com
2/15/1986	6,879.0	CASED HOLE LOG	DEPTH LOGGER ON CBL
6/27/2001	7,000.0	TAG	CLEAN OUT TO LAND TUBING
Wellbore Sections			
Section Des	Size (in)	Act Top, MD (ftKB)	Act Btm, MD (ftKB)
SURFACE	12 1/4	11	315
PRODUCTION	7 7/8	315	7,040
Zone Statuses			
Zone Name	Status Date	Status	Fluid Type
NIOBRARA	3/20/1986	PR	Water
NIOBRARA	5/24/2014	PR	
NIOBRARA	2/17/2016	PR	
CODELL	3/20/1986	PR	Water
CODELL	7/2/2001	PR	
CODELL	5/24/2014	PR	
Job			
DRILLING - ORIGINAL, 1/3/1986 00:00			
DRILLING - ORIGINAL, 1/3/1986 00:00			
RE-FRAC, 6/7/2001 00:00			
Prod Method			
Flowing			
Flowing			
Casing Strings			
Csg Des	Run Date	OD (in)	Wt/Len (lb/ft)
Surface	1/3/1986	8 5/8	24.00
Production	1/8/1986	4 1/2	11.60
Grade	Top, MD (ftKB)	MD (ftKB)	
N-80	11.0	7,033.0	
Cement			
Des	Top (ftKB)	Btm (ftKB)	
SURFACE CASING CEMENT	11.0	307.0	
PRODUCTION CASING CEMENT	5,940.0	7,033.0	
CASING REPAIR CEMENT	1,740.0	2,335.0	
Tubing Components			
Item Des	OD (in)	Wt (lb/ft)	Grade
EUE 8rd Tubing	2 3/8	4.70	J-55
Seal Nipple	2 3/8		
Notched collar	2 3/8		
Jts	Len (ft)		
223	6,879.00		
1	1.00		
1	1.00		
Perforation Data			
Linked Zone	Bnch/Stg	Sum of Entered Shot Total	Date
NIOBRARA, ORIGINAL HOLE	A	2	2/19/1986
NIOBRARA, ORIGINAL HOLE	B	4	2/19/1986
NIOBRARA, ORIGINAL HOLE	C	3	2/19/1986
CODELL, ORIGINAL HOLE		20	6/14/2001
CODELL, ORIGINAL HOLE		5	2/19/1986
Total (Sum)		34	
Other In Hole			
Run Date	Des	OD (in)	Top (ftKB)
			Btm (ftKB)
Logs			
Date	Type	Top, MD (ftKB)	Btm, MD (ftKB)
1/7/1986	COMPENSATED DENSITY	3,500.0	6,984.0
1/7/1986	INDUCTION	307.0	6,970.0
2/15/1986	CEMENT BOND	5,756.0	6,878.0
12/30/2015	GYRO	0.0	6,850.0

Well Name: FOE 16-20

VERTICAL - ORIGINAL HOLE, 5/21/2017 9:15:49 AM



Stimulation Intervals			
Bnch/Stg	Start Date	Primary Job Type	
	2/20/1986	COMPLETION - ORIGINAL	
Comment			
Volume Slurry Total (gal)			
108,024.00			
Treat Pressure Avg (psi)	Treat Pressure Max (psi)	Slurry Rate Avg (bbl/min)	Slurry Rate Max (bbl/min)
	4,600.0	37.0	
Bnch/Stg	Start Date	Primary Job Type	
	6/19/2001	RE-FRAC	
Comment			
Volume Slurry Total (gal)			
125,622.00			
Treat Pressure Avg (psi)	Treat Pressure Max (psi)	Slurry Rate Avg (bbl/min)	Slurry Rate Max (bbl/min)
4,571.0	5,284.0	15.1	