

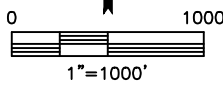
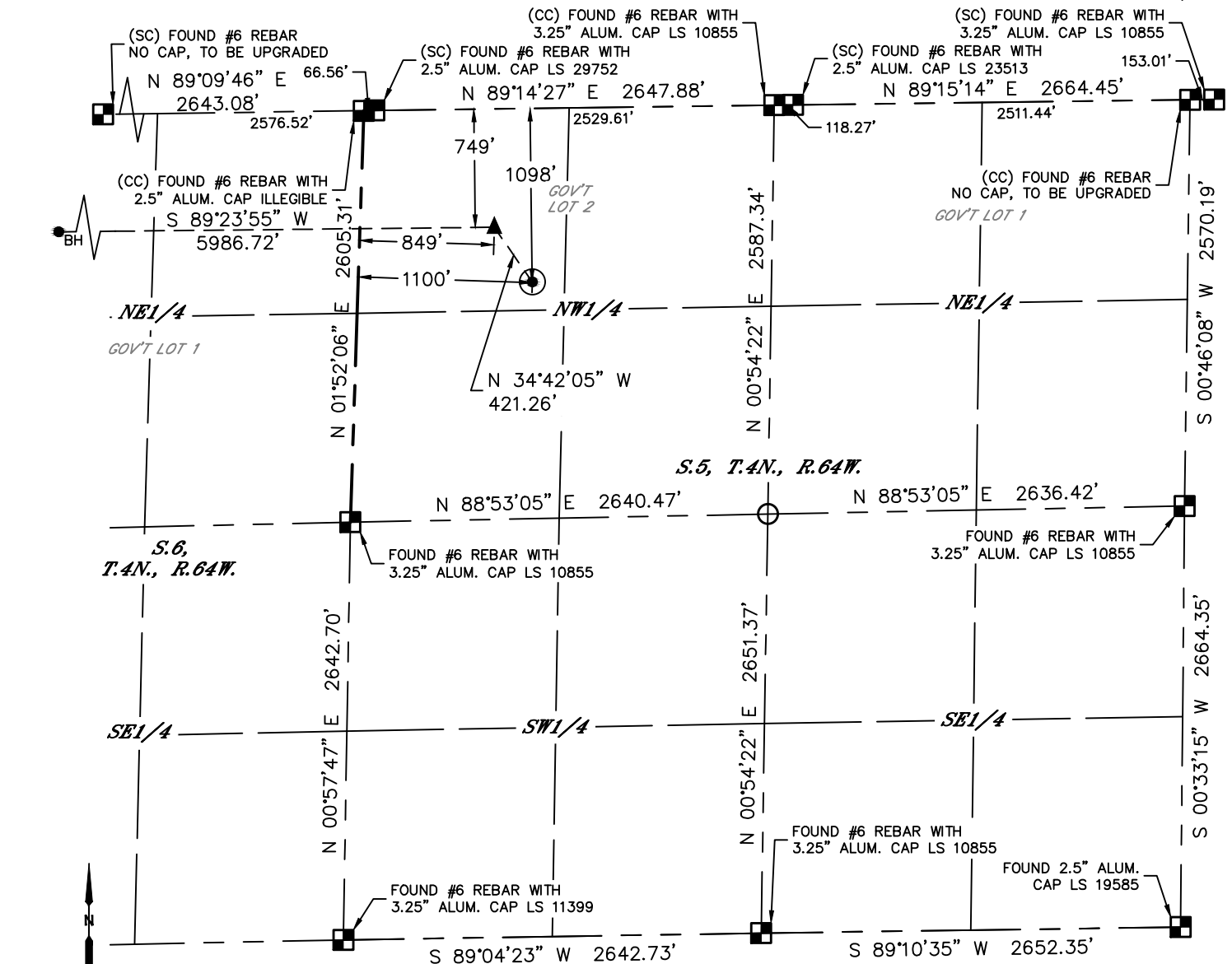


Lat40°, Inc. 6250 W. 10th Street, Unit 2, Greeley, CO 970-515-5294

# WELL LOCATION CERTIFICATE

WILMOTH W 5A-314

SECTION: 5  
TOWNSHIP: 4N  
RANGE: 64W  
6TH. P.M.  
WELD COUNTY, CO



- LEGEND**
- = ALIQUOT MONUMENT AS DESCRIBED
  - = CALCULATED POSITION
  - = SURFACE HOLE LOCATION (SHL)
  - ▲ = ENTRY POINT LOCATION (EP)
  - = BOTTOM HOLE LOCATION (BHL)
  - ⊙ = EXISTING WELL
  - ⊙ = ABANDONED WELL

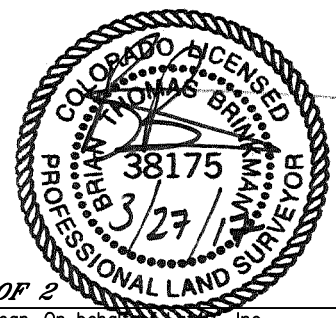
CLIENT: PDC ENERGY, INC.				LANDSMAN: MAC NEUMANN					
INSTRUMENT OPERATOR: BRIAN ROTTINGAUS				SURVEY DATE: 11/03/2016		SURFACE USE: CROP LAND			
SHL FOOTAGE	SHL LAT °	SHL LONG °	SHL PDOP	SHL ELEV	SHL 1/4/1/4	SHL S-T-R			
1098	FNL	1100	FWL	40.34547	-104.57953	1.3	4738	NWNW	5-4-64

BHL FOOTAGE	BHL LAT °	BHL LONG °	BHL S-T-R	EP LAT °	EP LONG °	EP S-T-R
724	FNL	50	FWL	40.34643	-104.60185	6-4-64

NEAREST CULTURAL ITEMS	
BUILDING	±1293' NW
BUILDING UNIT	±1294' NE
HIGH OCCUPANCY BUILDING UNIT	5280'+
DESIGNATED OUTSIDE ACTIVITY AREA	5280'+
PUBLIC ROAD (COUNTY ROAD 50)	±1086' N
ABOVE GROUND UTILITY	±1070' W
RAILROAD	5280'+
PROPERTY LINE	±1098' N

**NOTE:**

- Bearings shown are Grid Bearings of the Colorado State Plane Coordinate System, North Zone, North American Datum 1983. The lineal dimensions as contained herein are based upon the "U.S. Survey Foot."
- Distances to section lines measured at 90 degrees from said section lines.
- Ground elevations are based on an observed GPS elevation (NAVD 1988 DATUM).
- Latitude and Longitude shown are (NAD 83 DATUM).
- IMPROVEMENTS: See LOCATION DRAWING for all visible improvements within 500' of oil and gas location.
- This map does not represent a boundary survey.



**SHEET 1 OF 2**  
 Brian T. Brinkman—On behalf of Lat40°, Inc.  
 Colorado Licensed Professional Land Surveyor No. 38175  
 DATE: 3/24/2017  
 PROJECT#: 2016109

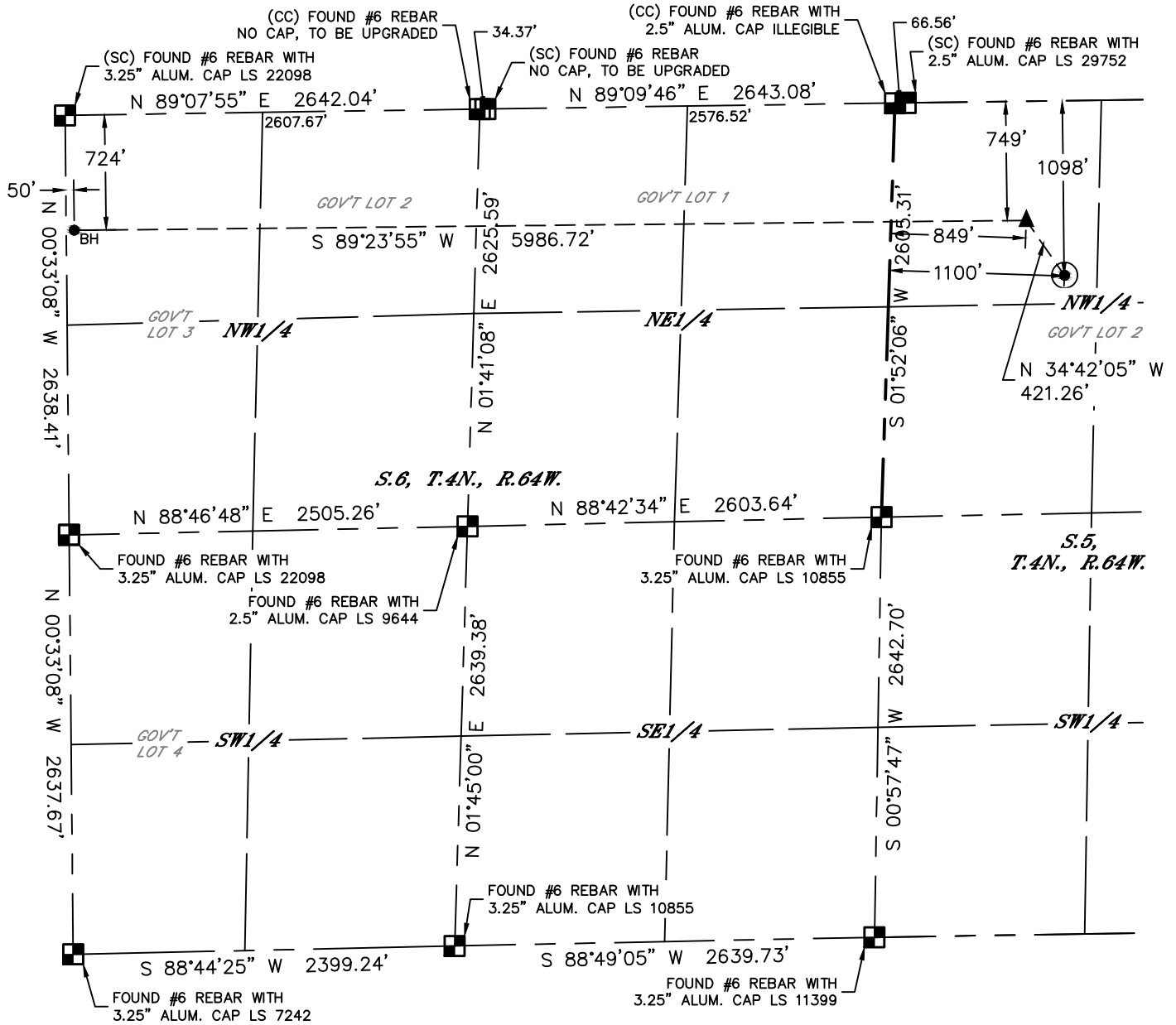


Lat40°, Inc. 6250 W. 10th Street, Unit 2, Greeley, CO 970-515-5294

# WELL LOCATION CERTIFICATE

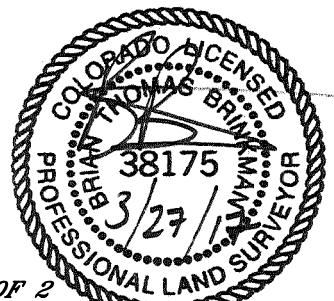
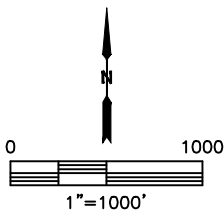
WILMOTH W 5A-314

SECTION: 5  
TOWNSHIP: 4N  
RANGE: 64W  
6TH. P.M.  
WELD COUNTY, CO



### LEGEND

- = ALIQUOT MONUMENT AS DESCRIBED
- = CALCULATED POSITION
- = SURFACE HOLE LOCATION (SHL)
- = ENTRY POINT LOCATION (EP)
- = BOTTOM HOLE LOCATION (BHL)
- = EXISTING WELL
- = ABANDONED WELL



**SHEET 2 OF 2**

Brian T. Brinkman—On behalf of Lat40°, Inc.  
Colorado Licensed Professional Land Surveyor No. 38175  
DATE: 3/24/2017  
PROJECT#: 2016109