

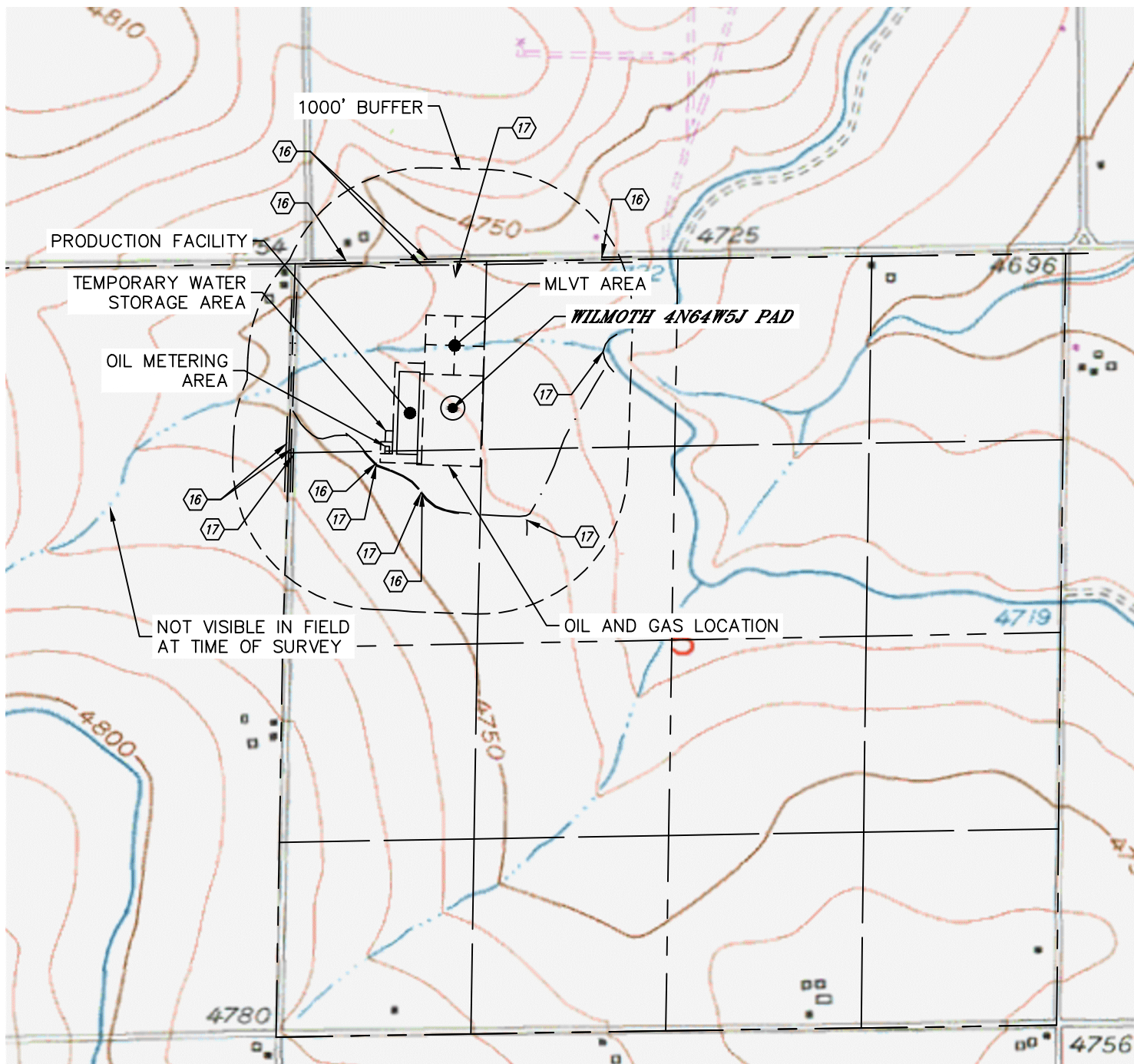


Lat40°, Inc. 6250 W. 10th Street, Unit 2, Greeley, CO 970-515-5294

HYDROLOGY MAP

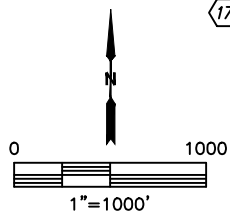
WILMOTH 4N64W5J PAD

SECTION: 5
TOWNSHIP: 4N
RANGE: 64W
6TH. P.M.
WELD COUNTY, CO



DISTANCES MEASURED FROM THE EDGE OF THE OIL AND GAS LOCATION.

- ① BORROW DITCH 27' SW, 193' S, 339' & 378' N, 605' & 640' W, 662' NW, 888' NE
- ② DITCH 34' SW, 191' S, 267' N, 482' SE, 589' W, 806' E



NEAREST DOWN GRADIENT SURFACE WATER: DITCH 806' E

DATE: 11/18/2016
PROJECT#: 2016109