



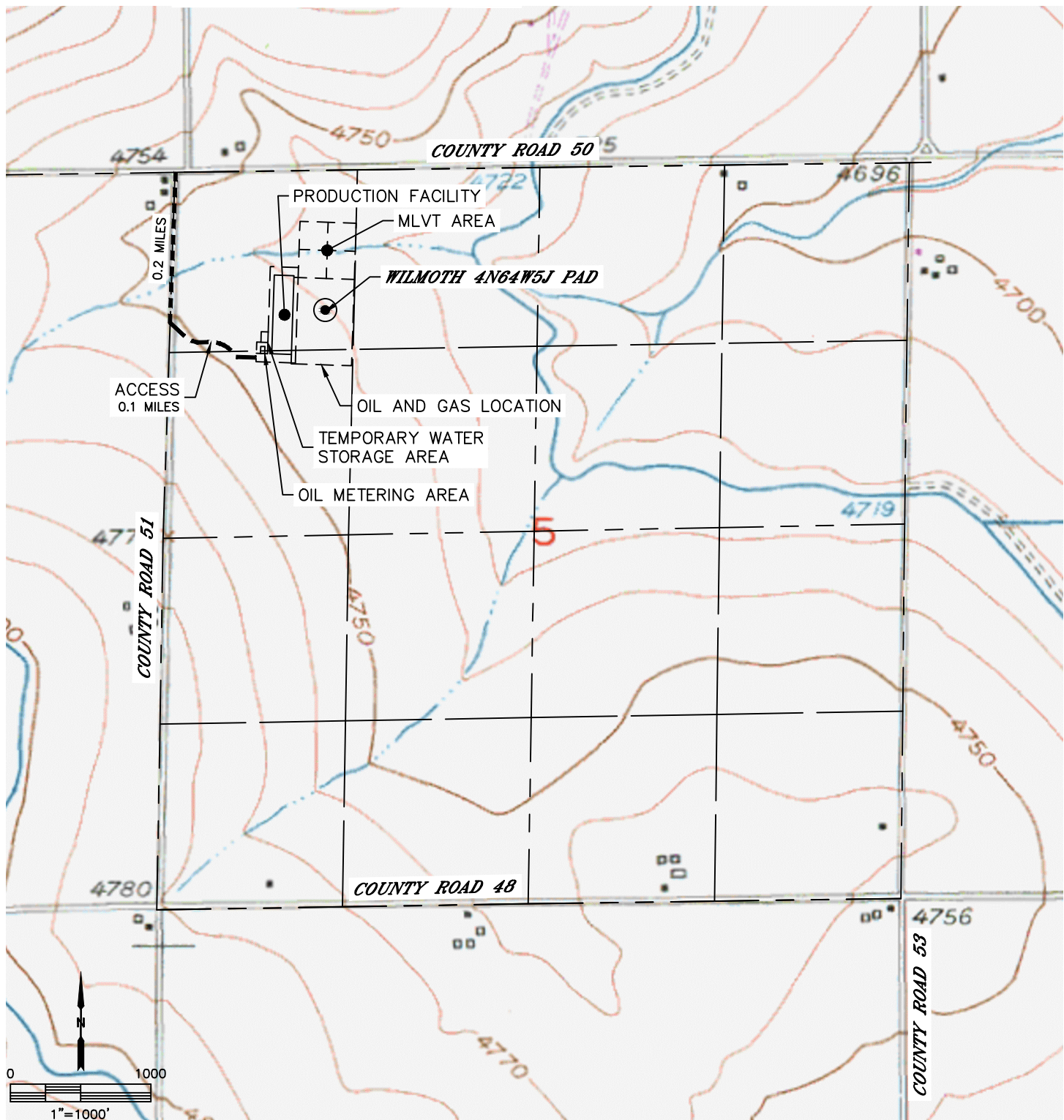
Lat40°, Inc. 6250 W. 10th Street, Unit 2, Greeley, CO 970-515-5294

ACCESS ROAD MAP

WILMOTH 4N64W5J PAD

SECTION: 5
TOWNSHIP: 4N
RANGE: 64W
6TH. P.M.
WELD COUNTY, CO

DRIVING DIRECTIONS TO WILMOTH 4N64W5J PAD:
FROM THE INTERSECTION OF COUNTY ROAD 50 AND COUNTY ROAD 51, DRIVE SOUTH ON
COUNTY ROAD 51 FOR 0.2 MILES. TURN SOUTHEAST AND DRIVE ON EXISTING ACCESS ROAD
FOR 0.1 MILES TO THE PROPOSED LOCATION.





Lat40°, Inc. 6250 W. 10th Street, Unit 2, Greeley, CO 970-515-5294

ACCESS ROAD MAP

WILMOTH 4N64W5J PAD

SECTION: 5
TOWNSHIP: 4N
RANGE: 64W
6TH. P.M.
WELD COUNTY, CO

