

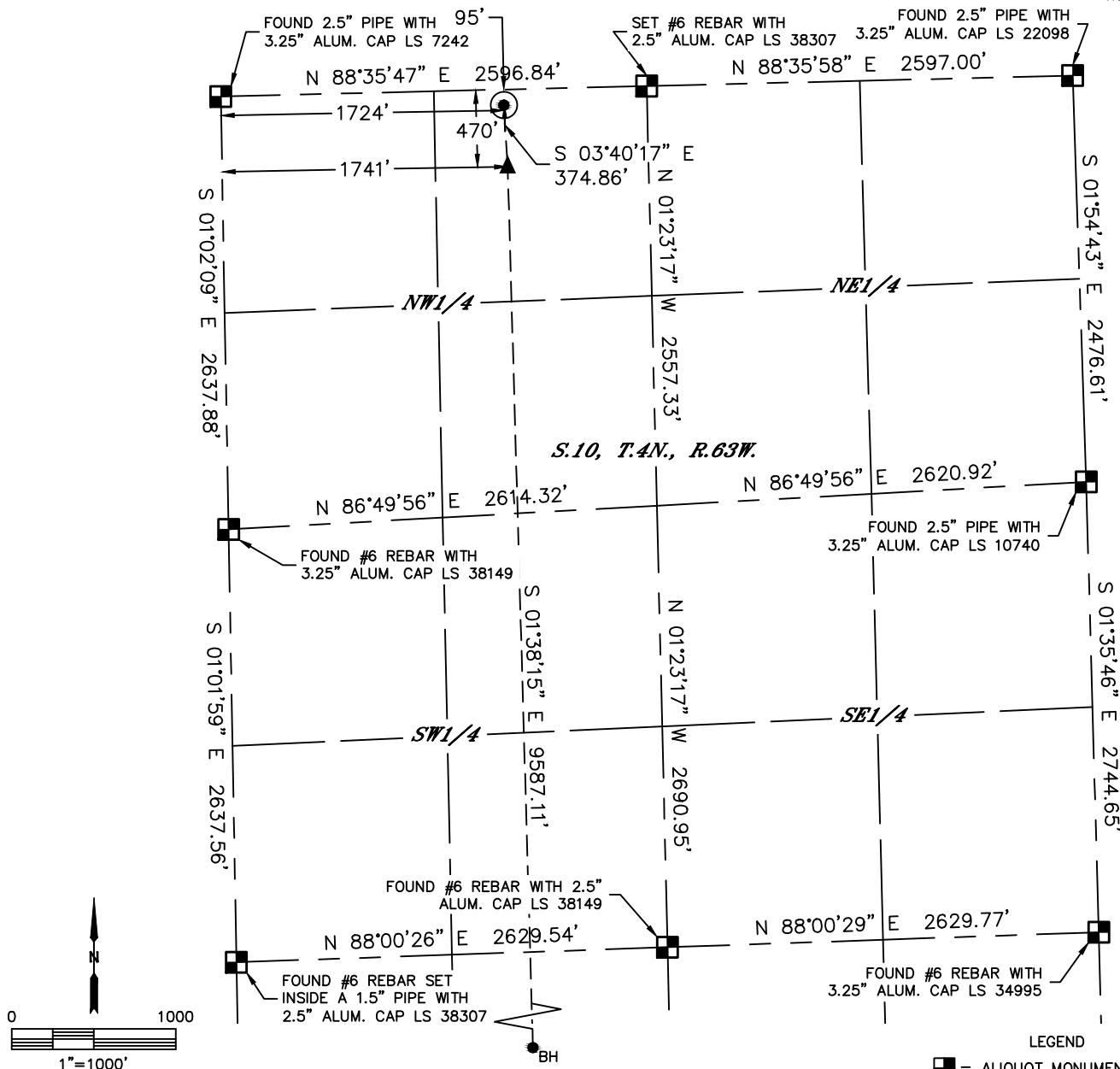


Lat40°, Inc. 6250 W. 10th Street, Unit 2, Greeley, CO 970-515-5294

# WELL LOCATION CERTIFICATE

70 RANCH 10-6-2L

SECTION: 10  
TOWNSHIP: 4N  
RANGE: 63W  
6TH. P.M.  
WELD COUNTY, CO



|                                  |          |            |          |                         |             |                        |
|----------------------------------|----------|------------|----------|-------------------------|-------------|------------------------|
| CLIENT: CONFLUENCE RESOURCES LP  |          |            |          | LANDMAN: MIKE DICKINSON |             |                        |
| INSTRUMENT OPERATOR: JAKE STILLE |          |            |          | SURVEY DATE: 4/27/2017  |             | SURFACE USE: RANGELAND |
| SHL FOOTAGE                      | SHL LAT° | SHL LONG°  | SHL PDOP | SHL ELEV (FT.)          | SHL 1/4/1/4 | SHL S-T-R              |
| 95 FNL 1724 FWL                  | 40.33366 | -104.42770 | 2.2      | 4606                    | NENW        | 10-4N-63W              |

|                  |          |            |           |          |            |           |
|------------------|----------|------------|-----------|----------|------------|-----------|
| BHL FOOTAGE      | BHL LAT° | BHL LONG°  | BHL S-T-R | EP LAT°  | EP LONG°   | EP S-T-R  |
| 470 FSL 1828 FWL | 40.30632 | -104.42706 | 15-4N-63W | 40.33263 | -104.42763 | 10-4N-63W |

NOTE:  
1) Bearings shown are Grid Bearings of the Colorado State Plane Coordinate System, North Zone, North American Datum 1983. The lineal dimensions as contained herein are based upon the "U.S. Survey Foot."  
2) Distances to section lines measured at 90 degrees from said section lines.  
3) Ground elevations are based on an observed GPS elevation (NAVD 1988 DATUM).  
4) Latitude and Longitude shown are (NAD 83 DATUM).  
5) IMPROVEMENTS: See LOCATION DRAWING for all visible improvements within 500' of oil and gas location.  
6) This map does not represent a boundary survey.

| NEAREST CULTURAL ITEMS           |          |
|----------------------------------|----------|
| BUILDING                         | ±4142'SE |
| BUILDING UNIT                    | ±4142'SE |
| HIGH OCCUPANCY BUILDING UNIT     | 5280+    |
| DESIGNATED OUTSIDE ACTIVITY AREA | 5280+    |
| PUBLIC ROAD (HWY 34)             | ±662'SW  |
| ABOVE GROUND UTILITY             | ±750'SW  |
| RAILROAD                         | 5280+    |
| PROPERTY LINE                    | ±95'N    |

- LEGEND
- = ALIQUOT MONUMENT AS DESCRIBED
  - = CALCULATED POSITION
  - = SURFACE HOLE LOCATION (SHL)
  - ▲ = ENTRY POINT LOCATION (EP)
  - = BOTTOM HOLE LOCATION (BHL)
  - ⊙ = EXISTING WELL
  - ⊙ = ABANDONED WELL



SHEET 1 OF 2

Kyle E. Rutz-On behalf of Lat40°, Inc.  
Colorado Licensed Professional Land Surveyor No. 38307  
DATE: 5/5/2017  
PROJECT#: 2017038

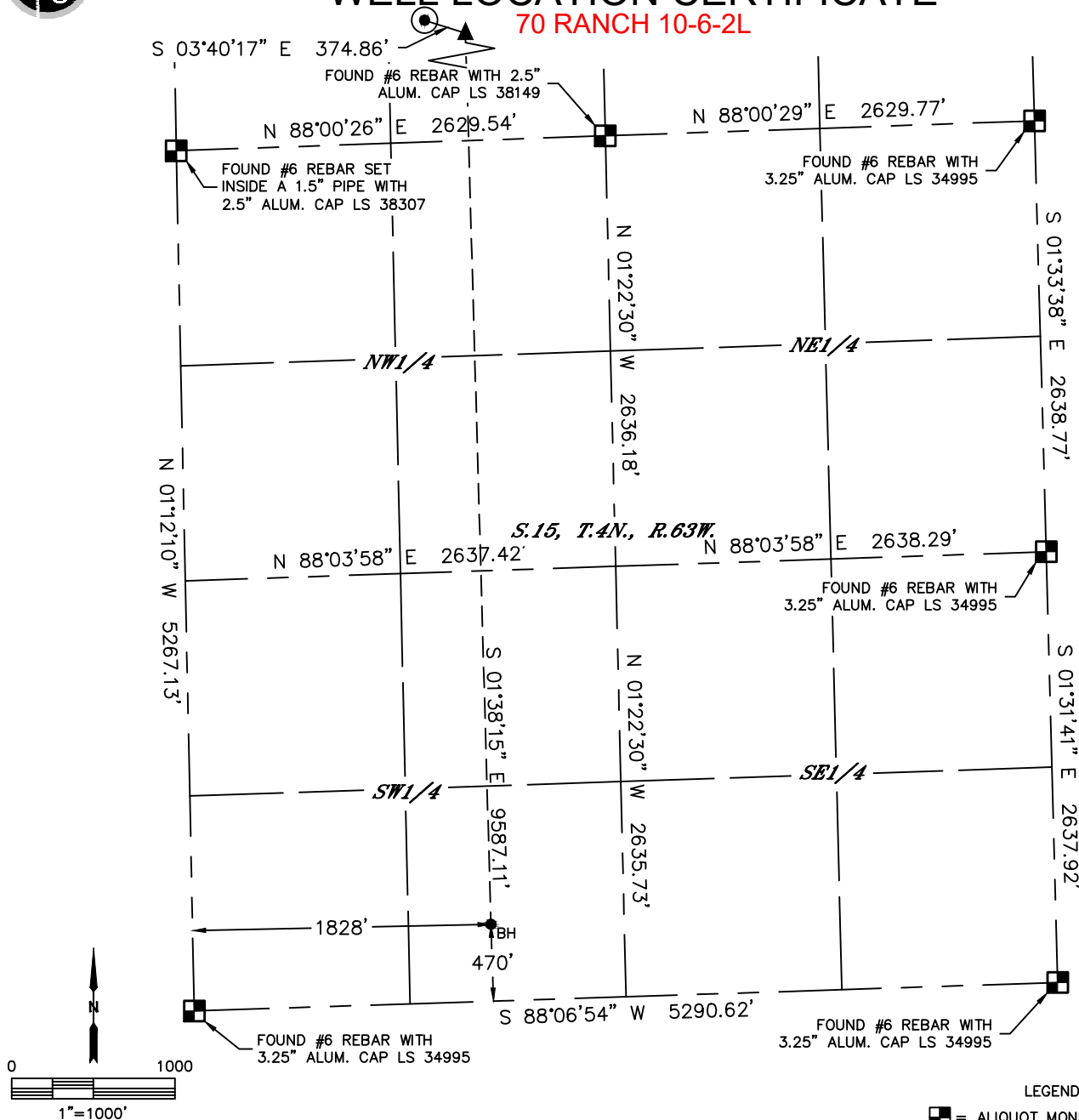


Lat40°, Inc. 6250 W. 10th Street, Unit 2, Greeley, CO 970-515-5294

# WELL LOCATION CERTIFICATE

70 RANCH 10-6-2L

SECTION: 10  
TOWNSHIP: 4N  
RANGE: 63W  
6TH. P.M.  
WELD COUNTY, CO

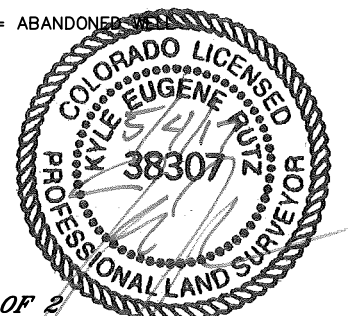


## LEGEND

- = ALIQUOT MONUMENT AS DESCRIBED
- = CALCULATED POSITION
- = SURFACE HOLE LOCATION (SHL)
- ▲ = ENTRY POINT LOCATION (EP)
- BH = BOTTOM HOLE LOCATION (BHL)
- ⊕ = EXISTING WELL
- ⊕ ABANDONED = ABANDONED WELL

## NOTE:

- 1) Bearings shown are Grid Bearings of the Colorado State Plane Coordinate System, North Zone, North American Datum 1983. The lineal dimensions as contained herein are based upon the "U.S. Survey Foot."
- 2) Distances to section lines measured at 90 degrees from said section lines.
- 3) Ground elevations are based on an observed GPS elevation (NAVD 1988 DATUM).
- 4) Latitude and Longitude shown are (NAD 83 DATUM).
- 5) IMPROVEMENTS: See LOCATION DRAWING for all visible improvements within 500' of oil and gas location.
- 6) This map does not represent a boundary survey.



SHEET 2 OF 2

Kyle E. Rutz—On behalf of Lat40°, Inc.  
Colorado Licensed Professional Land Surveyor No. 38307  
DATE: 5/5/2017  
PROJECT#: 2017038