



SRC ENERGY

**Operator:** Blue Chip Oil  
**Well Name:** North Poudre #2-30  
**Legal:** NENE, Section 30, Township 6N, Range 66W  
**Location:** Weld County, CO  
**API:** 05-123-33823

Deepest Water Well Within 1  
Mile = 60'





### Wellbore History

Spud Date: 09/21/2011  
Surf Csg: 8.625", 24# @ 489' – 410sx  
Prod Csg: 4.5", 11.6# @ 7878' - 640 sx  
TOC: 3100' (CBL)  
Perfs: NIO-CODELL: 6950'-7256'  
J SAND: 7720' – 7730'

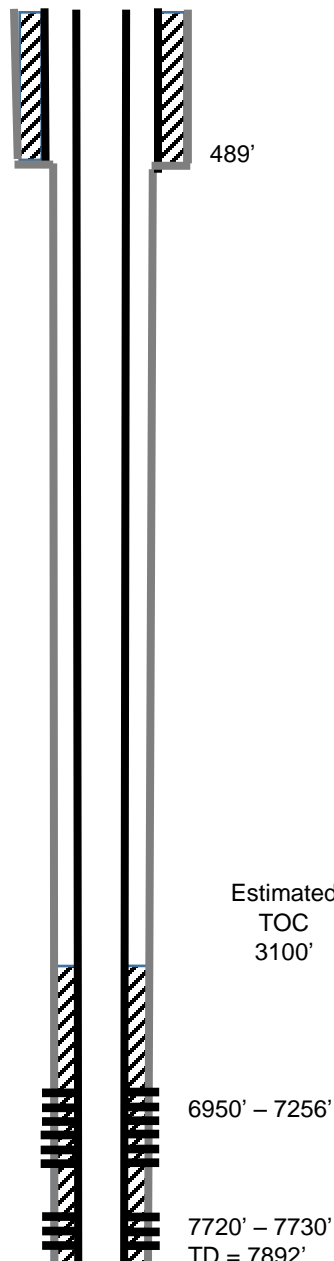
### P&A Procedure

Set CIBP @ 7645'  
Dump bail 2 sx on CIBP  
Set retainer@ 6875' and squeeze perfs  
Set 5 sx on top of retainer (50' plug)  
Perf @ 4150' & circ 30 sx on backside  
Pump 10 sx @ 4150' – 4050' (100' plug)  
Cut Casing @ 499'  
Pmp 225 sx @ 549' to surface

### Key

-  Existing Cement Coverage
-  Retainer
-  Cement Pumped
-  CIBP

### Current



### Proposed

