



SRC ENERGY

**Operator:** Blue Chip Oil  
**Well Name:** North Poudre #1  
**Legal:** NENE, Section 30, Township 6N, Range 66W  
**Location:** Weld County, CO  
**API:** 05-123-13140

Deepest Water Well Within 1

Mile = 60'

### Wellbore History

Spud Date: 08/22/1986

Surf Csg: 8.625", 24# @ 302' – 240sx

Prod Csg: 5.5", 15.1#, 17# @ 7215' -  
175 sx

TOC: 5904' (CBL)

Perfs: CODELL: 7130'-7140'

### P&A Procedure

Set retainer@ 7055' and squeeze perfs

Set 40 sx on top of retainer (255' plug)

Perf @ 4150' & circ 25 sx on backside

Pump 15 sx @ 4150' – 4050' (100' plug)

Cut Casing @ 312'

Pmp 145 sx @ 362' to surface

### Key



Existing Cement Coverage



Retainer

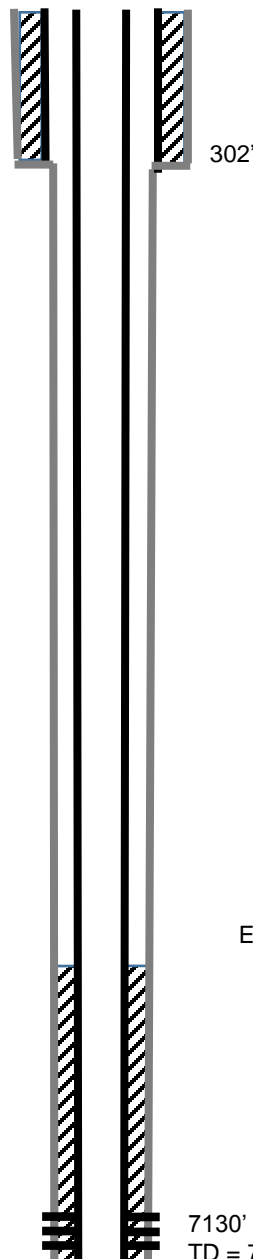


Cement Pumped

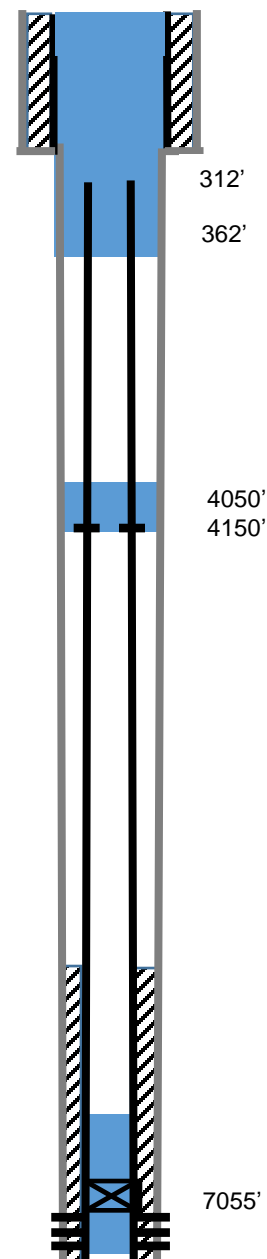


CIBP

### Current



### Proposed



Estimated  
TOC  
5904'