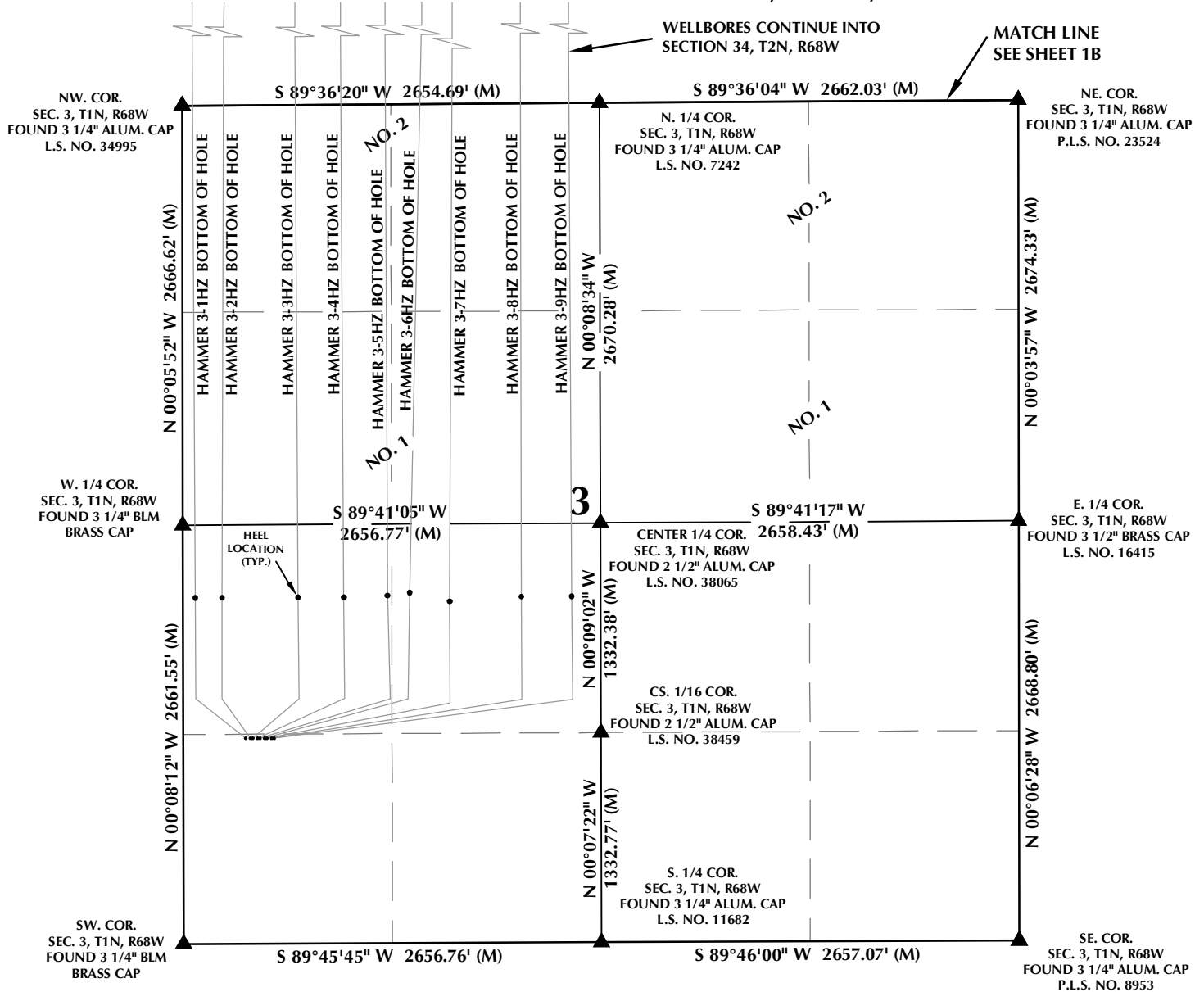


MULTI-WELL PLAN SECTION 3, T1N, R68W



WELL NOTES:

HAMMER 3-1HZ

SURFACE: 1306' FSL, 396' FWL, SEC. 3, T1N, R68W
BOTTOM HOLE: 52' FNL, 46' FWL, SEC. 34, T2N, R68W

HAMMER 3-2HZ

SURFACE: 1306' FSL, 426' FWL, SEC. 3, T1N, R68W
BOTTOM HOLE: 52' FNL, 292' FWL, SEC. 34, T2N, R68W

HAMMER 3-3HZ

SURFACE: 1306' FSL, 441' FWL, SEC. 3, T1N, R68W
BOTTOM HOLE: 52' FNL, 701' FWL, SEC. 34, T2N, R68W

HAMMER 3-4HZ

SURFACE: 1306' FSL, 471' FWL, SEC. 3, T1N, R68W
BOTTOM HOLE: 53' FNL, 991' FWL, SEC. 34, T2N, R68W

HAMMER 3-5HZ

SURFACE: 1306' FSL, 486' FWL, SEC. 3, T1N, R68W
BOTTOM HOLE: 53' FNL, 1281' FWL, SEC. 34, T2N, R68W

HAMMER 3-6HZ

SURFACE: 1306' FSL, 516' FWL, SEC. 3, T1N, R68W
BOTTOM HOLE: 53' FNL, 1634' FWL, SEC. 34, T2N, R68W

HAMMER 3-7HZ

SURFACE: 1306' FSL, 531' FWL, SEC. 3, T1N, R68W
BOTTOM HOLE: 53' FNL, 1750' FWL, SEC. 34, T2N, R68W

HAMMER 3-8HZ

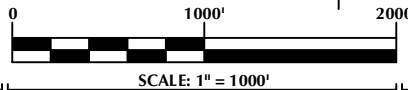
SURFACE: 1306' FSL, 561' FWL, SEC. 3, T1N, R68W
BOTTOM HOLE: 52' FNL, 2152' FWL, SEC. 34, T2N, R68W

HAMMER 3-9HZ

SURFACE: 1306' FSL, 576' FWL, SEC. 3, T1N, R68W
BOTTOM HOLE: 52' FNL, 2442' FWL, SEC. 34, T2N, R68W

NOTES:

- ▲ INDICATES SECTION CORNER
- INDICATES CALCULATED CORNER
- BASIS OF BEARING DERIVED FROM COLORADO COORDINATE SYSTEM OF 1983 NORTH ZONE.
- ALL MEASURED DISTANCES ARE GRID. COMBINED SCALE FACTOR: .99972258 CALCULATED FROM THE SW. CORNER OF SECTION 3, T1N, R68W
- WELL FOOTAGES ARE MEASURED AT RIGHT ANGLES TO THE SECTION LINES.
- NO. 1 & NO. 2 AS SHOWN HEREON ARE GOVERNMENT LOTS 1 & 2 PER THE ORIGINAL GLO SURVEY



WELL PAD - HAMMER 3-5HZ

MULTI-WELL PLAN
HAMMER 3-1HZ, HAMMER 3-2HZ, HAMMER 3-3HZ,
HAMMER 3-4HZ, HAMMER 3-5HZ, HAMMER 3-6HZ,
HAMMER 3-7HZ, HAMMER 3-8HZ & HAMMER 3-9HZ
LOCATED IN SECTION 3, T1N, R68W, 6TH P.M. &
LOCATED IN SECTION 34, T2N, R68W, 6TH P.M.
WELD COUNTY, COLORADO

**Kerr-McGee Oil &
Gas Onshore L.P.**
1099 18th Street
Denver, Colorado 80202



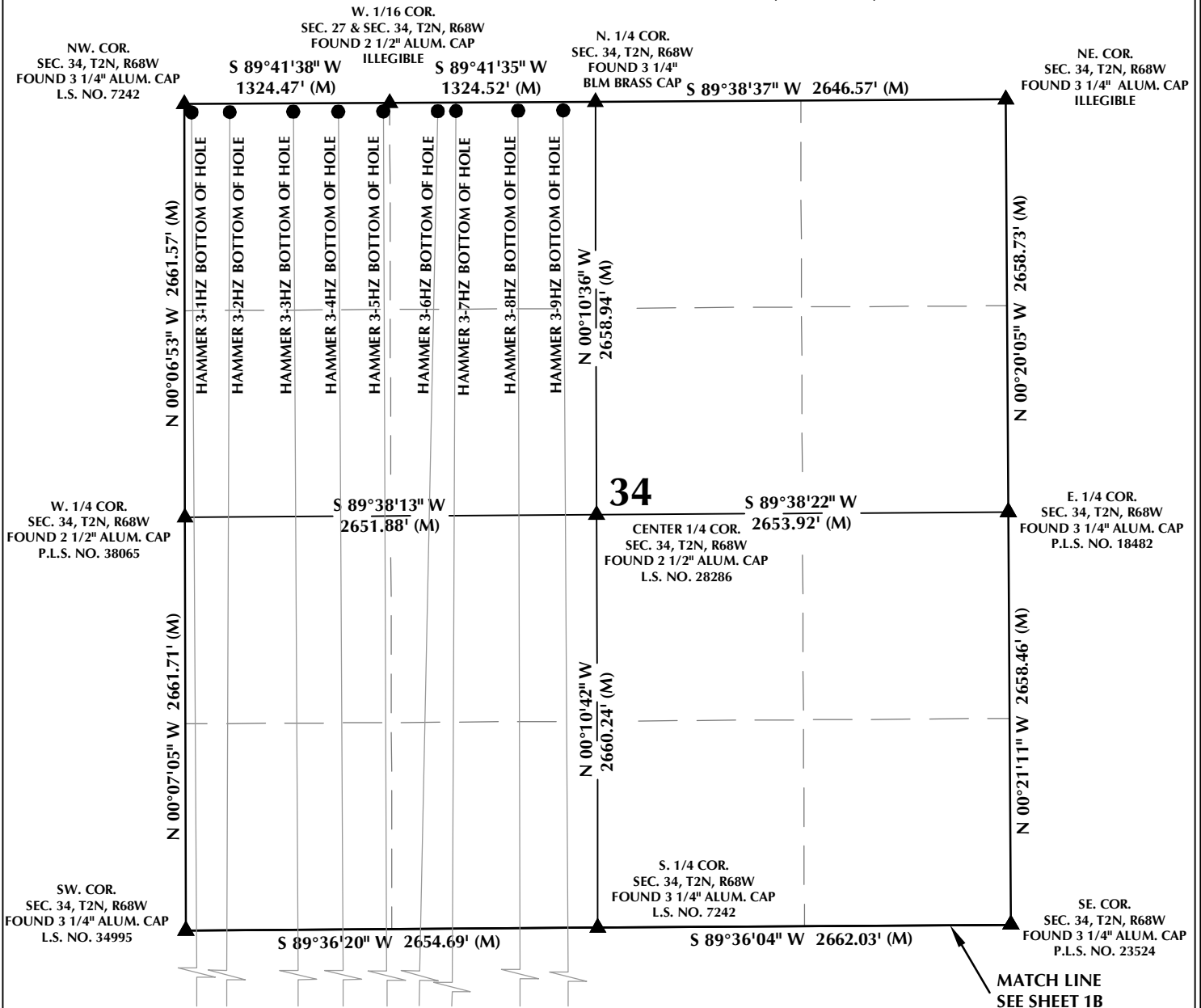
CONSULTING, LLC

SHERIDAN OFFICE
1095 Saberton Avenue
Sheridan, Wyoming 82801
Phone 307-674-0609

LOVELAND OFFICE
1635 Foxtrail Drive, Suite 204
Loveland, Colorado 80538
Phone 970-776-4331

DRAFTED BY:	LMO	CHECKED BY:	RKF	SHEET NO:
DATE DRAFTED:	2/20/17	DATE SURVEYED:	12/15/16	1A
REVISED:	4/21/17	FILE NAME:	14-106	1A OF 1

MULTI-WELL PLAN SECTION 34, T2N, R68W



WELL NOTES:

HAMMER 3-1HZ

SURFACE: 1306' FSL, 396' FWL, SEC. 3, T1N, R68W
BOTTOM HOLE: 52' FNL, 46' FWL, SEC. 34, T2N, R68W

HAMMER 3-2HZ

SURFACE: 1306' FSL, 426' FWL, SEC. 3, T1N, R68W
BOTTOM HOLE: 52' FNL, 292' FWL, SEC. 34, T2N, R68W

HAMMER 3-3HZ

SURFACE: 1306' FSL, 441' FWL, SEC. 3, T1N, R68W
BOTTOM HOLE: 52' FNL, 701' FWL, SEC. 34, T2N, R68W

HAMMER 3-4HZ

SURFACE: 1306' FSL, 471' FWL, SEC. 3, T1N, R68W
BOTTOM HOLE: 53' FNL, 991' FWL, SEC. 34, T2N, R68W

HAMMER 3-5HZ

SURFACE: 1306' FSL, 486' FWL, SEC. 3, T1N, R68W
BOTTOM HOLE: 53' FNL, 1281' FWL, SEC. 34, T2N, R68W

HAMMER 3-6HZ

SURFACE: 1306' FSL, 516' FWL, SEC. 3, T1N, R68W
BOTTOM HOLE: 53' FNL, 1634' FWL, SEC. 34, T2N, R68W

HAMMER 3-7HZ

SURFACE: 1306' FSL, 531' FWL, SEC. 3, T1N, R68W
BOTTOM HOLE: 53' FNL, 1750' FWL, SEC. 34, T2N, R68W

HAMMER 3-8HZ

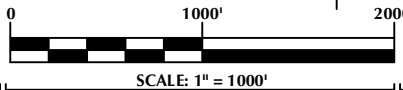
SURFACE: 1306' FSL, 561' FWL, SEC. 3, T1N, R68W
BOTTOM HOLE: 52' FNL, 2152' FWL, SEC. 34, T2N, R68W

HAMMER 3-9HZ

SURFACE: 1306' FSL, 576' FWL, SEC. 3, T1N, R68W
BOTTOM HOLE: 52' FNL, 2442' FWL, SEC. 34, T2N, R68W

NOTES:

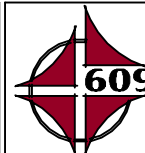
- INDICATES SECTION CORNER
- INDICATES CALCULATED CORNER
- BASIS OF BEARING DERIVED FROM COLORADO COORDINATE SYSTEM OF 1983 NORTH ZONE.
- ALL MEASURED DISTANCES ARE GRID. COMBINED SCALE FACTOR: .99972258 CALCULATED FROM THE SW. CORNER OF SECTION 3, T1N, R68W
- WELL FOOTAGES ARE MEASURED AT RIGHT ANGLES TO THE SECTION LINES.



WELL PAD - HAMMER 3-5HZ

MULTI-WELL PLAN
HAMMER 3-1HZ, HAMMER 3-2HZ, HAMMER 3-3HZ,
HAMMER 3-4HZ, HAMMER 3-5HZ, HAMMER 3-6HZ,
HAMMER 3-7HZ, HAMMER 3-8HZ & HAMMER 3-9HZ
LOCATED IN SECTION 3, T1N, R68W, 6TH P.M. &
LOCATED IN SECTION 34, T2N, R68W, 6TH P.M.
WELD COUNTY, COLORADO

**Kerr-McGee Oil &
Gas Onshore L.P.**
1099 18th Street
Denver, Colorado 80202



CONSULTING, LLC

SHERIDAN OFFICE
1095 Saberton Avenue
Sheridan, Wyoming 82801
Phone 307-674-0609

LOVELAND OFFICE
1635 Foxtrail Drive, Suite 204
Loveland, Colorado 80538
Phone 970-776-4331

DRAFTED BY:	LMO	CHECKED BY:	RKF	SHEET NO:
DATE DRAFTED:	2/20/17	DATE SURVEYED:	12/15/16	1B
REVISED:	4/21/17	FILE NAME:	14-106	1B OF 1