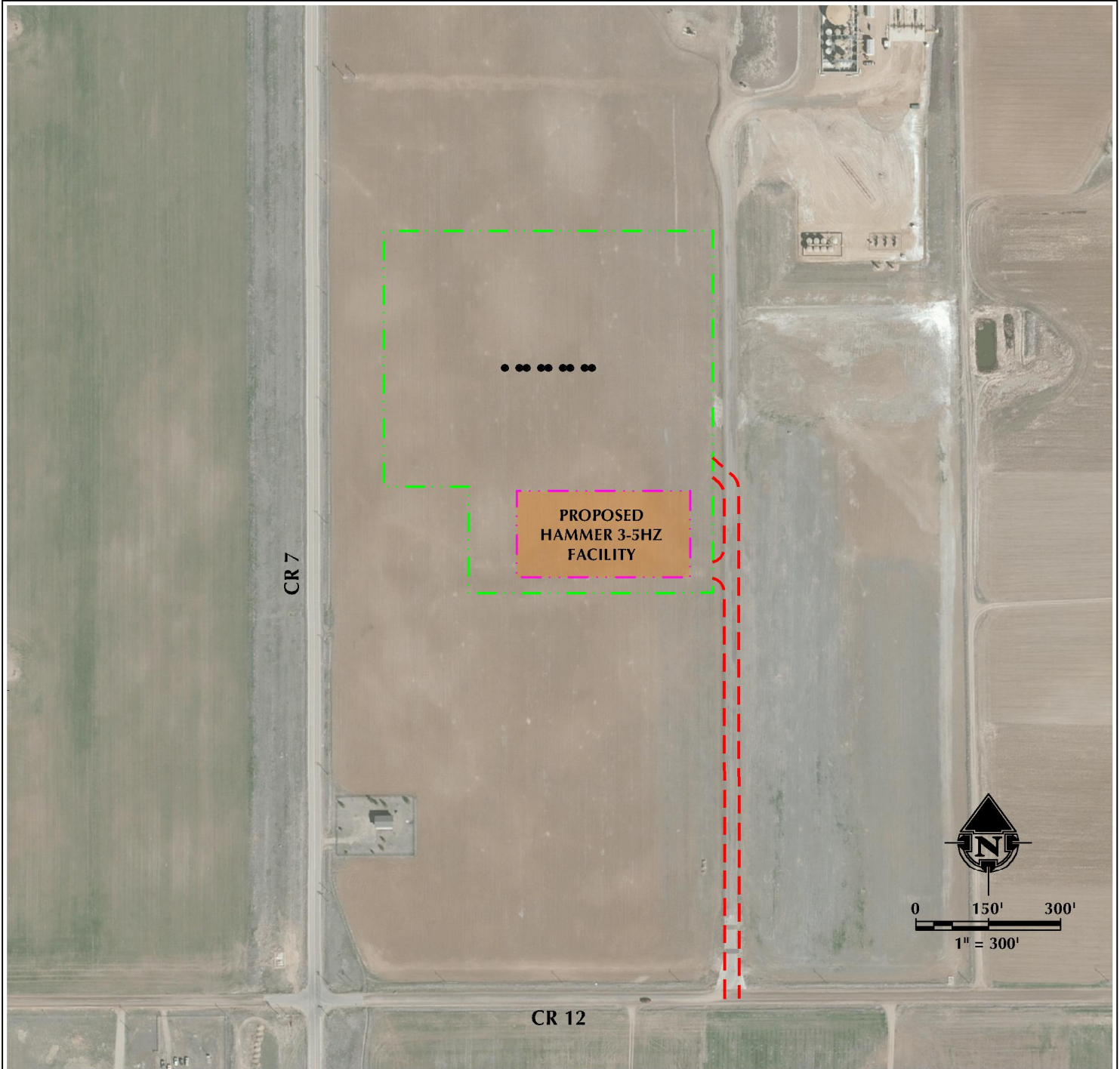


HAMMER 3-5HZ ACCESS MAP

W1/2 SW1/4 SECTION 3, TOWNSHIP 1 NORTH, RANGE 68 WEST, 6TH P.M.



LEGEND

- PROPOSED WELL
- ACCESS
- PROPOSED FACILITY
- DISTURBANCE AREA



609 CONSULTING, LLC
LOVELAND OFFICE
1615 Foxtrail Drive, Suite 204
Loveland, Colorado 80538
Phone 970-776-4331

SHERIDAN OFFICE
1095 Saberton Avenue
Sheridan, Wyoming 82801
Phone 307-674-0609

DATE SURVEYED: 12/15/16
DATE: 2/21/17
DRAFTER: CDJ
REVISED:

DATA SOURCES:
- AERIAL COURTESY OF ESRI, INC.

PREPARED FOR:
Kerr-McGee Oil & Gas Onshore L.P.