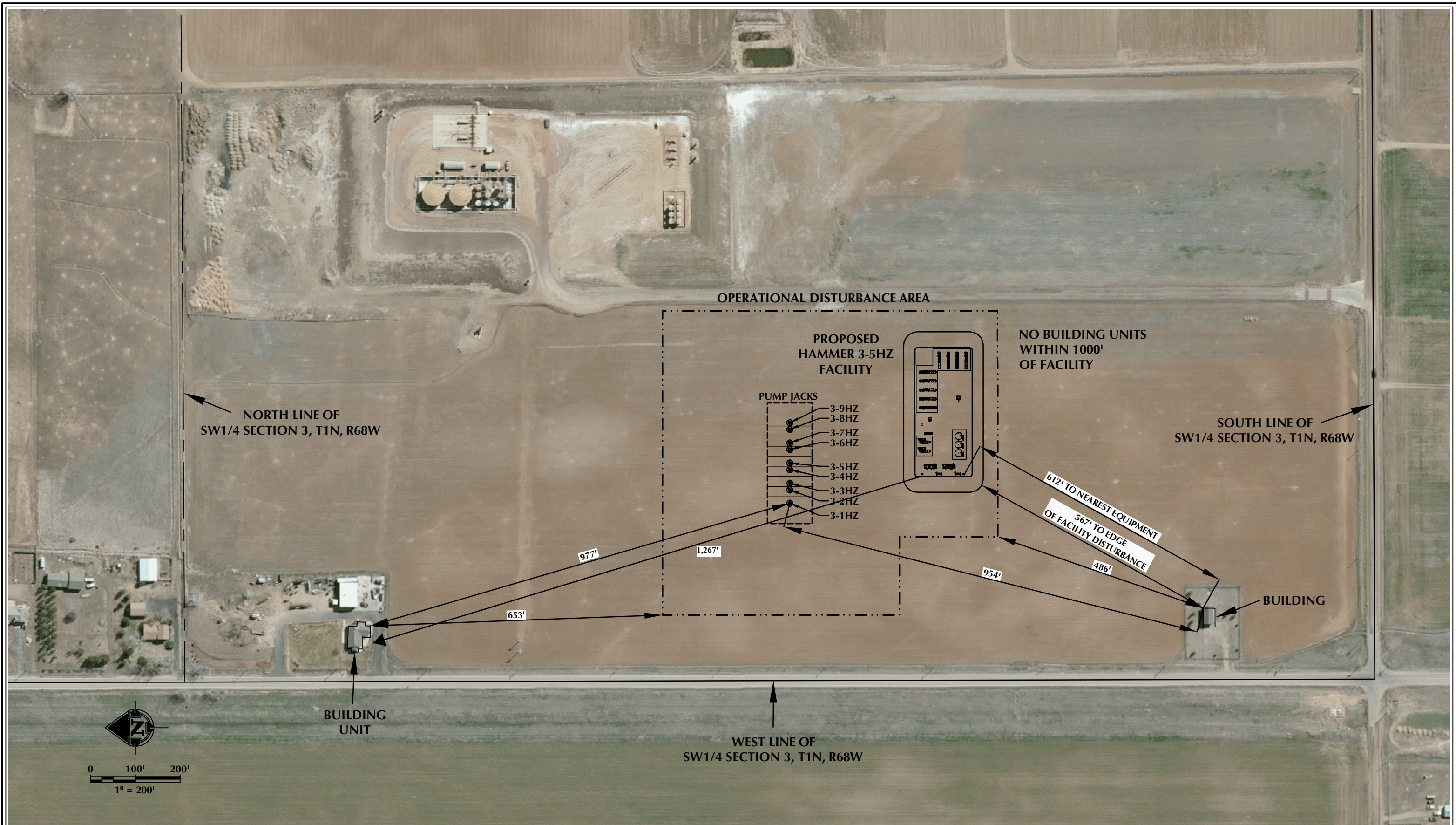


K:\ANADARKO\2014\2014-100-SUMMITFIELD\_ERIE-CORPORATE\_SEC\_10\_T14\_R68W\DWG GRADING PLANS\SW SEC 4\SEC 3\_OP.dwg, 2/2/2017 10:51 PM, steven



**NOTES:**  
1. EQUIPMENT PLACEMENT IS APPROXIMATE AND SUBJECT TO MINOR MODIFICATION DUE TO SPECIFIC CIRCUMSTANCES.

**DATA SOURCES:**  
- AERIAL COURTESY OF ESRI, INC.

  
**609**  
**CONSULTING, LLC**  
LOVELAND OFFICE  
1635 Foxtrail Drive, Suite 204  
Loveland, Colorado 80538  
Phone 970-776-4331  
SHERIDAN OFFICE  
1095 Saberton Avenue  
Sheridan, Wyoming 82801  
Phone 307-674-0609

  
**Anadarko**  
Petroleum Corporation  
1099 18th Street  
Denver, CO 80202

SCALE: 1" = 200'  
DATE SURVEYED: 12/15/16  
DATE: 2/14/17  
DRAFTER: CDR  
REVISED:

**FACILITY LAYOUT AERIAL**  
**HAMMER 3-5HZ**  
LOCATED IN SECTION 3, T1N, R68W, 6TH P.M.  
WELD COUNTY, COLORADO





FILE LOCATION: N:\Projects\Madariko\14081 - 2015 Production Facilities\3D Models\Hammer\Drawings\Permit\Y22084 - STOR-01-PP-2020 REV 1.dwg  
LAST SAVED: 1/5/2017 BY: Rocky Goodwin  
PLOT STYLE: HWY20B