

LEGEND:

- = 90° SYMBOL
● = PROPOSED WELLHEAD.
◆ = PRODUCTION INTERVAL.
○ = TARGET BOTTOM HOLE.
▲ = SECTION CORNERS LOCATED. (NAD 83)
△ = SECTION CORNERS RE-ESTABLISHED.
(Not Set on Ground.)
(NAD 83)

LINE TABLE		
LINE	DIRECTION	LENGTH
L1	N78°01'18"W	3244.46'
L2	S89°51'41"W	135.03'
L3	S85°44'09"W	2089.32'
L4	S89°51'41"W	135.03'

T5S, R65W, 6th P.M.



ConocoPhillips Company

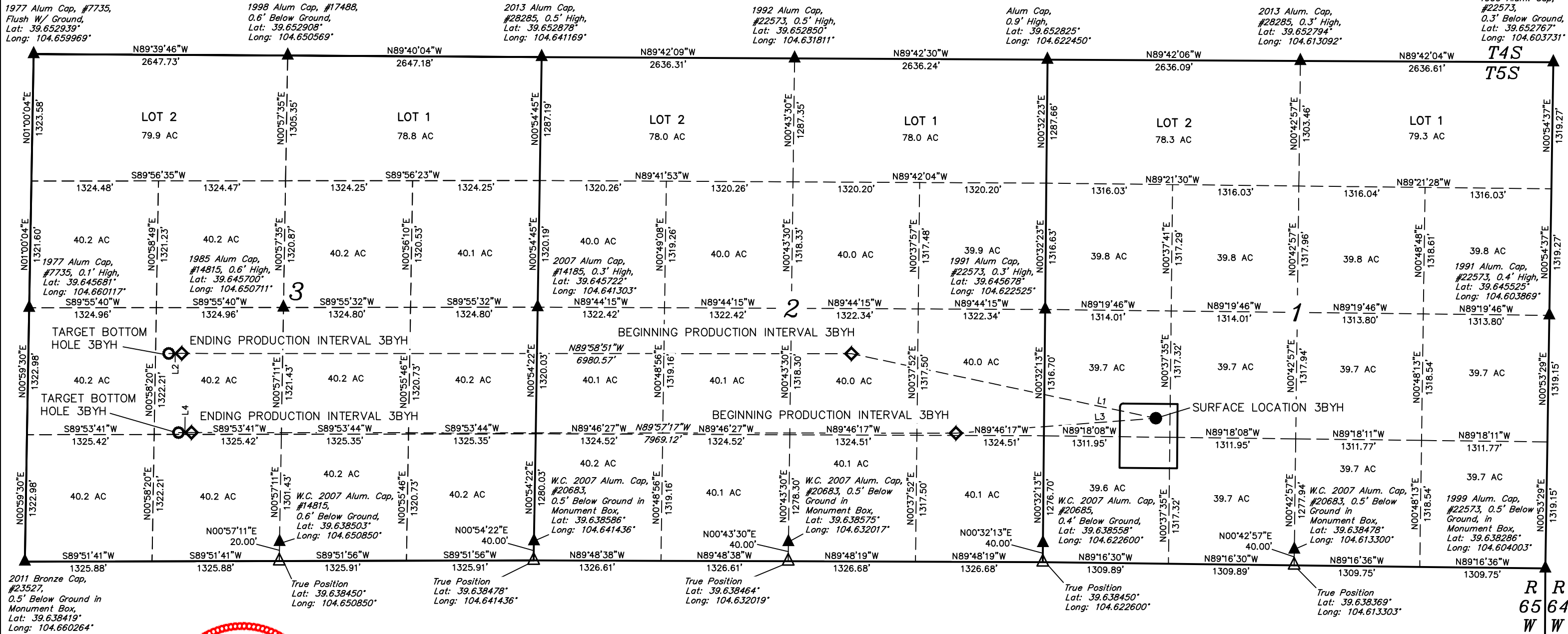
STATE CHALLENGER 5-65 2-3 3BYH
NW 1/4 SW 1/4, SECTION 1, T5S, R65W, 6th P.M.
ARAPAHOE COUNTY, COLORADO

BASIS OF BEARINGS

BASIS OF BEARINGS IS A G.P.S. OBSERVATION

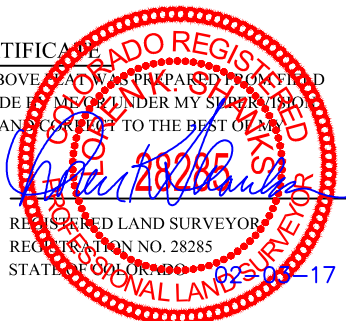
BASIS OF ELEVATION

BENCHMARK 374 LOCATED ON THE SECTION LINE BETWEEN
SECTIONS 12 & 13, T5S, R64W, 6th. P.M., TAKEN FROM 1988
PUBLISHED DATUM BY THE UNITED STATES DEPARTMENT OF THE
INTERIOR, GEOLOGICAL SURVEY AS BEING 6054.61 FEET.



CERTIFICATE

THIS IS TO CERTIFY THAT THE ABOVE MAP WAS PREPARED FROM FIELD
NOTES OF ACTUAL SURVEYS MADE BY ME OR UNDER MY SUPERVISION
AND THAT THE SAME ARE TRUE AND CORRECT TO THE BEST OF MY
KNOWLEDGE AND BELIEF.



REGISTERED LAND SURVEYOR
REGISTRATION NO. 28285
STATE OF COLORADO
28285-17

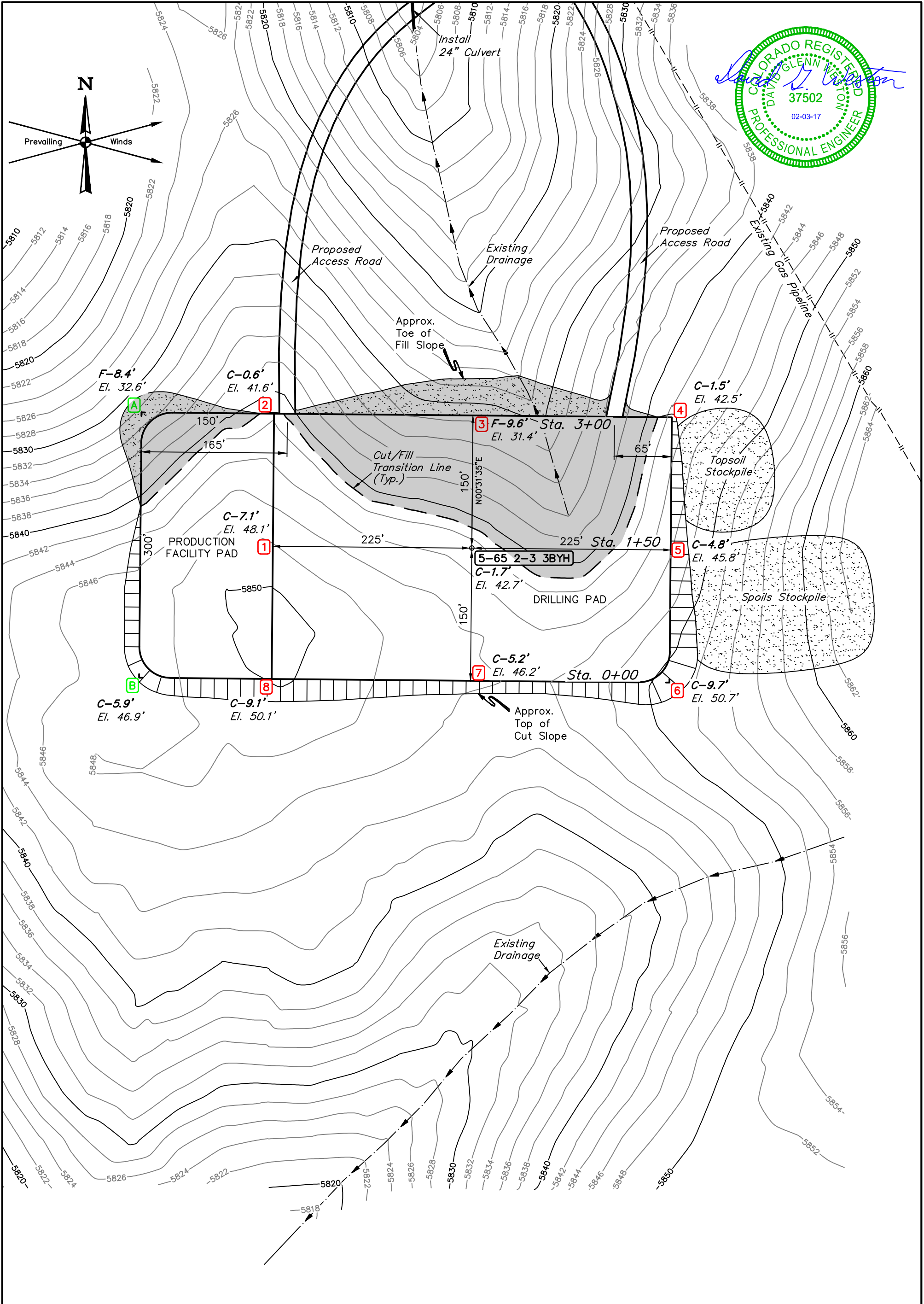
WELL	SURFACE LOCATION	BEGINNING PRODUCTION INTERVAL	ENDING PRODUCTION INTERVAL	TARGET BOTTOM HOLE
3BYH	1514' FSL 1165' FWL	2166' FSL 2015' FEL	2166' FSL 1597' FWL	2166' FSL 1462' FWL
3BYH	1514' FSL 1165' FWL	1341' FSL 917' FEL	1341' FSL 1713' FWL	1341' FSL 1578' FWL



UELS, LLC
Corporate Office * 85 South 200 East
Vernal, UT 84078 * (435) 789-1017

SURVEYED BY	DALLAS NIELSEN, C.M.	01-16-17	SCALE
DRAWN BY	J.M.C.	01-25-17	1" = 1000'

SECTION BREAKDOWN



FINISHED GRADE ELEVATION = 5841.0'

REV: 1 01-25-17 J.M.C. (NAME CHANGE)

NOTES:

- Round corners at 35' radius or as needed.
- Construct diversion ditches as needed.
- Contours shown at 2' intervals.
- Cut/Fill slopes 3:1 (Typ.).



UELS, LLC

Corporate Office * 85 South 200 East

Vernal, UT 84078 * (435) 789-1017

ConocoPhillips Company

STATE CHALLENGER 5-65 2-3 3BYH

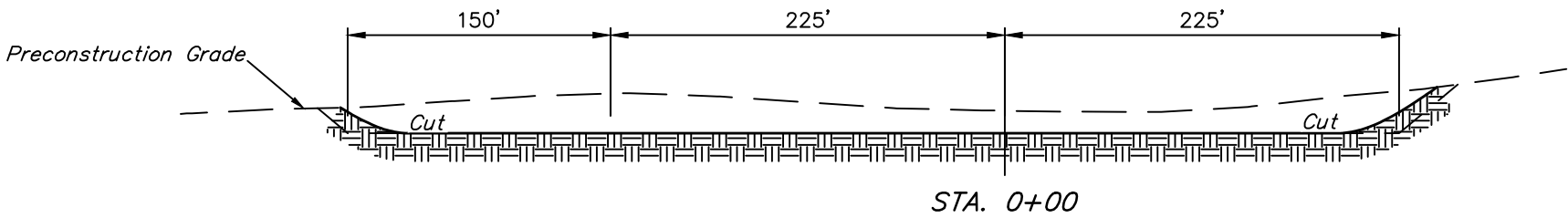
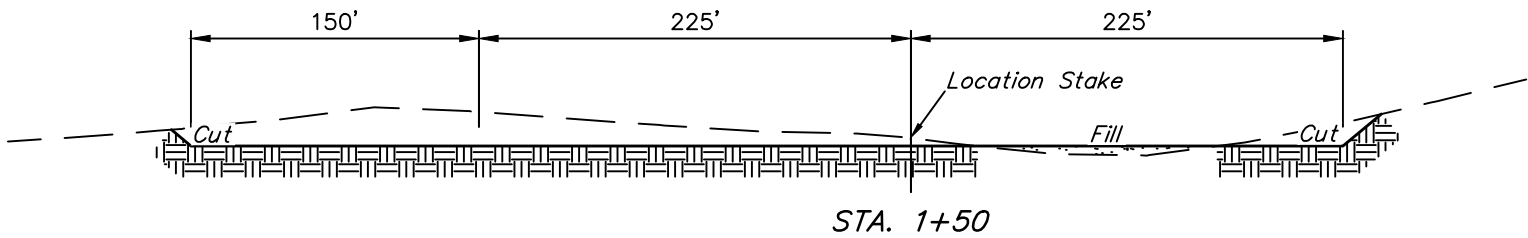
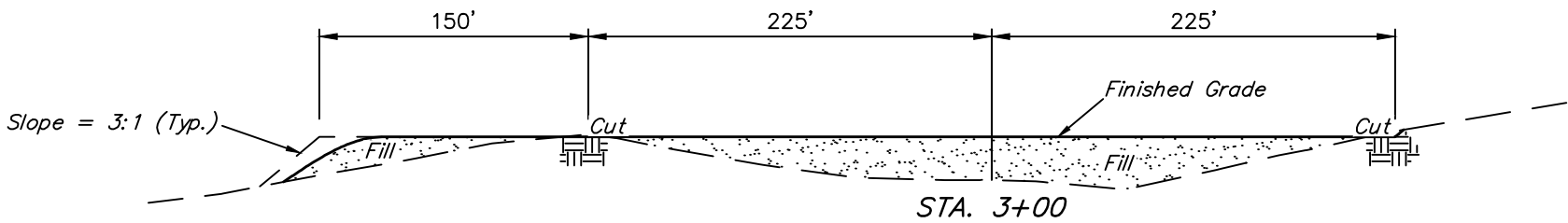
NW 1/4 SW 1/4, SECTION 1, T5S, R65W, 6th P.M.

ARAPAHOE COUNTY, COLORADO

SURVEYED BY	DALLAS NIELSEN, C.M.	01-16-17	SCALE
DRAWN BY	B.D.H.	01-18-17	1" = 100'

CONSTRUCTION LAYOUTFIGURE #1

1" = 40'
X-Section
Scale
1" = 100'



APPROXIMATE EARTHWORK QUANTITIES	
(6") TOPSOIL STRIPPING	3,990 Cu. Yds.
REMAINING LOCATION	22,700 Cu. Yds.
TOTAL CUT	26,690 Cu. Yds.
FILL	12,620 Cu. Yds.
EXCESS MATERIAL	14,070 Cu. Yds.
TOPSOIL	3,990 Cu. Yds.
EXCESS UNBALANCE (After Interim Rehabilitation)	10,080 Cu. Yds.

APPROXIMATE SURFACE DISTURBANCE AREAS		
	DISTANCE	ACRES
WELL SITE DISTURBANCE	NA	±5.893
60' WIDE ACCESS ROAD R-O-W DISTURBANCE	±4,230'	±5.826
TOTAL SURFACE USE AREA		±11.719

REV: 1 01-25-17 J.M.C. (NAME CHANGE)

- NOTES:**
- Fill quantity includes 10% for compaction.
 - Calculations based on 6" of topsoil stripping.
 - Cut/Fill slopes 3:1 (Typ.).

ConocoPhillips Company

STATE CHALLENGER 5-65 2-3 3BYH
NW 1/4 SW 1/4, SECTION 1, T5S, R65W, 6th P.M.
ARAPAHOE COUNTY, COLORADO

SURVEYED BY	DALLAS NIELSEN, C.M.	01-16-17	SCALE
DRAWN BY	B.D.H.	01-18-17	AS SHOWN
CONSTRUCTION LAYOUT CROSS SECTIONS			FIGURE #2



UELS, LLC
Corporate Office * 85 South 200 East
Vernal, UT 84078 * (435) 789-1017