

Company	URSA OPERATING COMPANY		
Well	B&V 14A-07-07-95		
Field	WILDCAT		
County	Garfield	State	CO
Company URSA OPERATING COMPANY Well B&V 14A-07-07-95 Field WILDCAT County Garfield State CO			
API No.:	05-045-227210000	Serv. #:	903923356
Location:	BHL: 1253' FSL & 580' FWL		Other Services
Sec: 7 Twp: 7S Rge: 95W Ground Level Elevation 5084' KB, 17 Ft. above perm. datum KB			JB/GR

Date @ Time Logged	25-MARCH-2017		Type Fluid in Hole	FRESH WATER
Run No.	ONE	Density of Fluid	8.4 PPG	
Depth - Driller	6300 FT	Fluid Level	FULL	
Depth - Logger	6186 FT	Cement Top Est. Logged	N/A	
Bottom - Logged Interval	6180 FT	Equipment / Location	11808537 / RS	
Top - Log Interval	2500 FT	Recorded by	Pedro Gonzalez Baqueiro	
Max. Recorded Temp.	200 °F	Witnessed by	Luke Grieger	
CEMENTING DATA		Protection String	Production String	Liner
Date / Time Cemented		String	String	
Primary / Squeeze				
Expected Compressive Strength	psi@ hrs	psi@ hrs	psi@ hrs	psi@ hrs
Cement Volume				
Cement Type / Weight Formulation	/	/	/	/
Mud Type / Mud Wgt.	/	/	/	/
Borehole Record				
Run Number	Bit	From	To	Size
ONE	24"	SURFACE	60'	16"
TWO	12.25"	SURFACE	1700'	8.625"
THREE	7.875"	SURFACE	6300'	4.5"
Casing & Tubing Record				
	Weight	From	To	
	75	SURFACE	60'	
	32	SURFACE	1700'	
	11.6	SURFACE	6300'	

<<< Fold Here >>>

HALLIBURTON DOES NOT GUARANTEE THE ACCURACY OF ANY INTERPRETATION OF THE LOG DATA, CONVERSION OF LOG DATA TO PHYSICAL ROCK PARAMETERS OR RECOMMENDATIONS WHICH MAY BE GIVEN BY HALLIBURTON PERSONNEL OR WHICH APPEAR ON THE LOG OR IN ANY OTHER FORM. ANY USER OF SUCH DATA, INTERPRETATIONS, CONVERSIONS, OR RECOMMENDATIONS AGREES THAT HALLIBURTON IS NOT RESPONSIBLE EXCEPT WHERE DUE TO GROSS NEGLIGENCE OR WILLFUL MISCONDUCT, FOR ANY LOSS, DAMAGES, OR EXPENSES RESULTING FROM THE USE THEREOF.

Comments

HES Reservoir Monitor log First Run in to the Hole
 Log Correlated By KB 17'
 Log Interval Per Customer Request
 Log Ran in combo with CBL-M tool

THANK YOU FOR CHOOSING HALLIBURTON ENERGY SERVICES ROCK SPRING WY

MAIN PASS



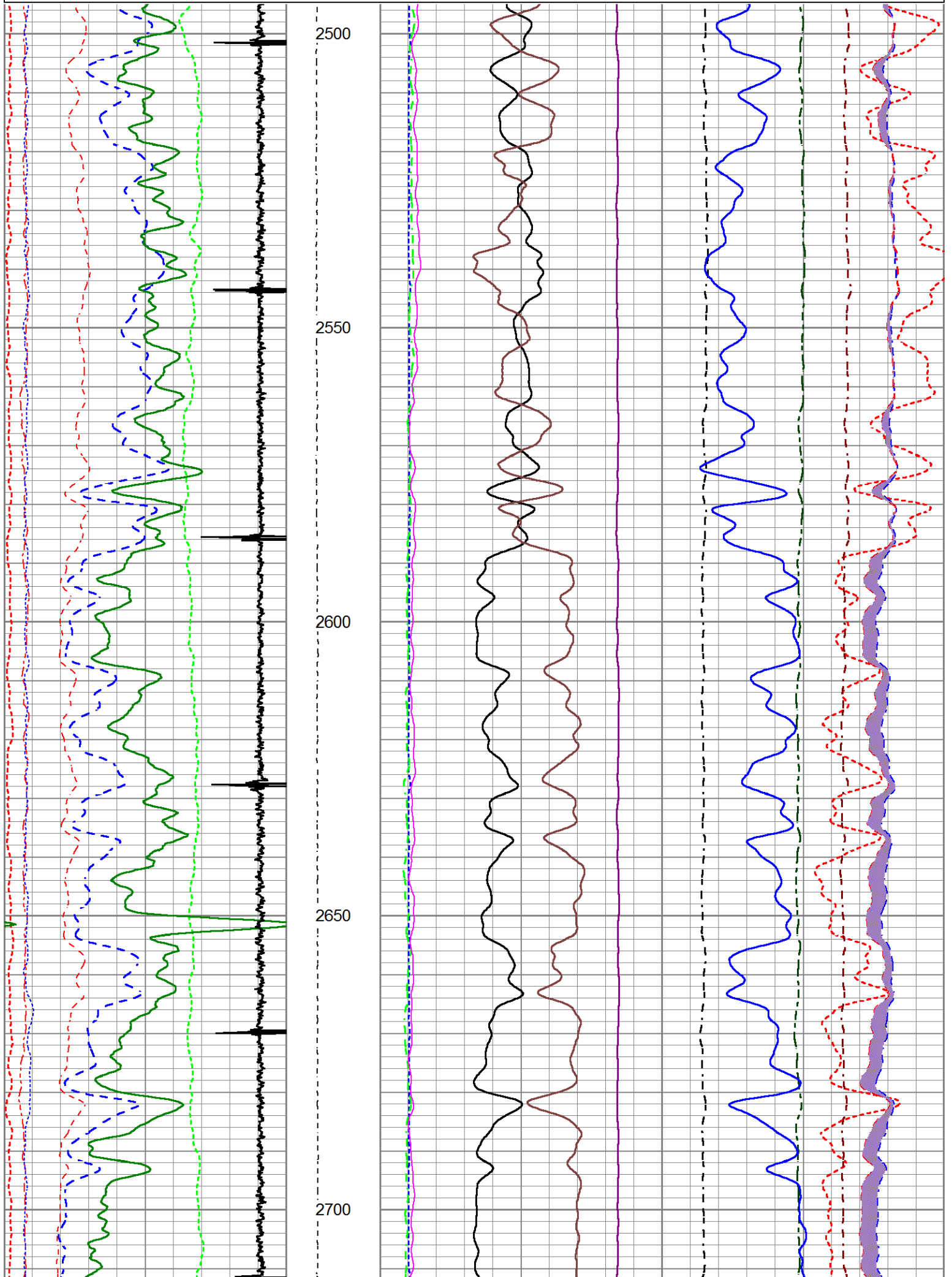
5"=100'

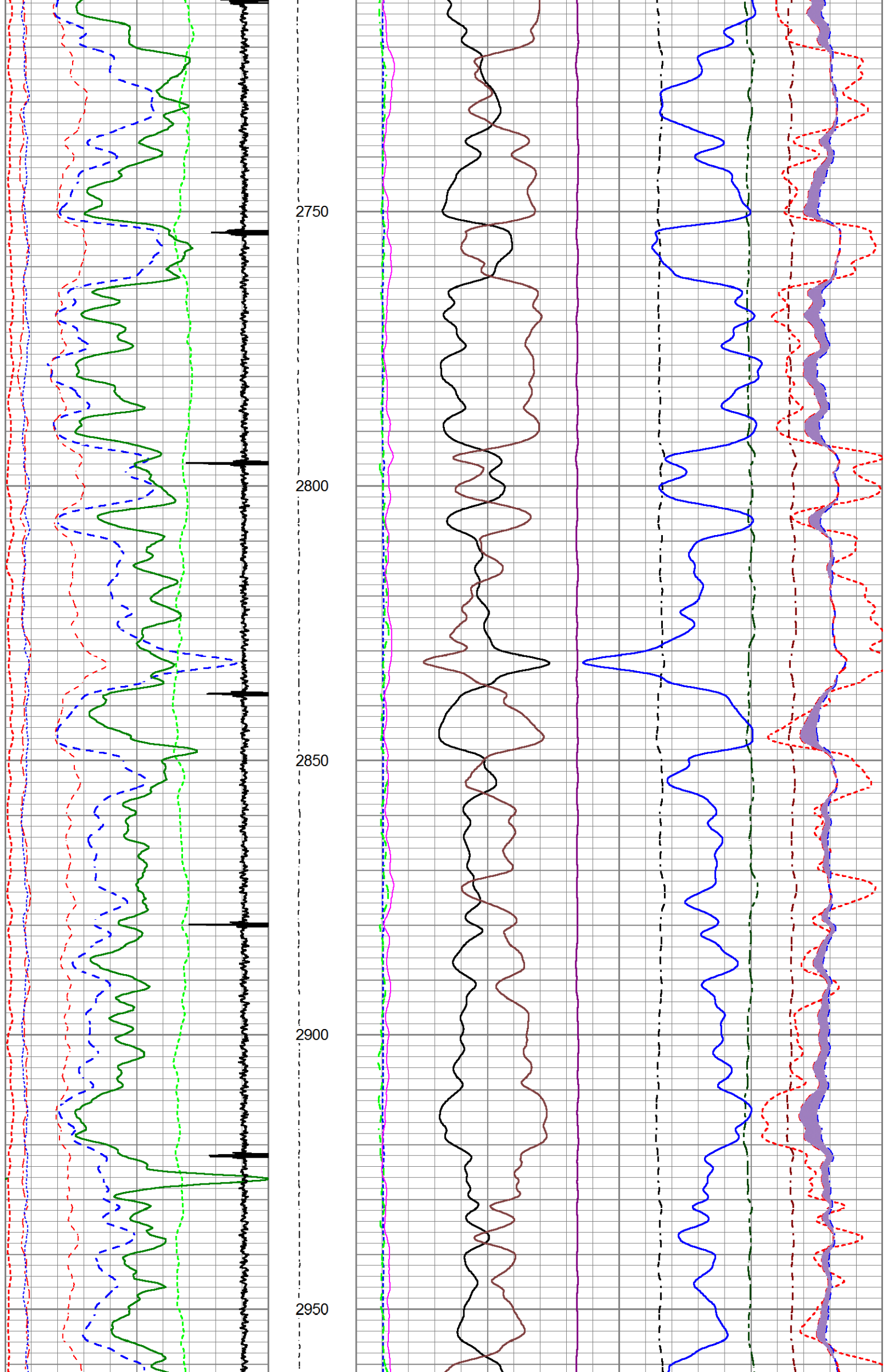
Database File c:\users\h182119\desktop\ursa b&v logs\first 12\b&v 14a-07-07-95\b&v 14a-07-07-95.db
 Dataset Pathname WC/B&V_14A-07-07-95/run1/MAIN
 Presentation Format Unknown
 Dataset Creation Sat Mar 25 08:13:29 2017
 Charted by Depth in Feet scaled 1:240

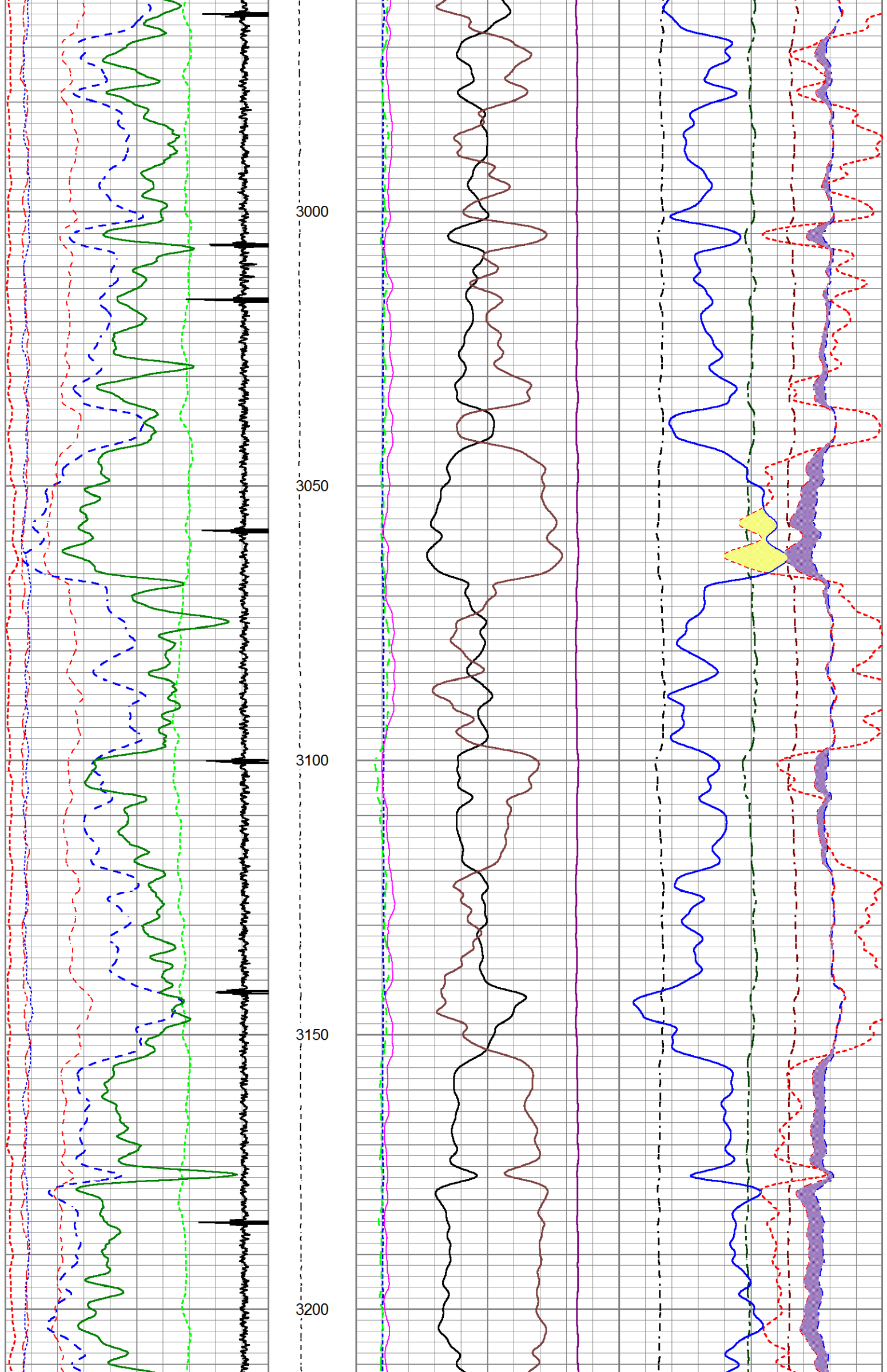
200	Near Bore Si (SGBN)	0	TENSION	0	RATIO (RNF)	1
0	OAI	100	(lb/1800)	60	SGIN	0

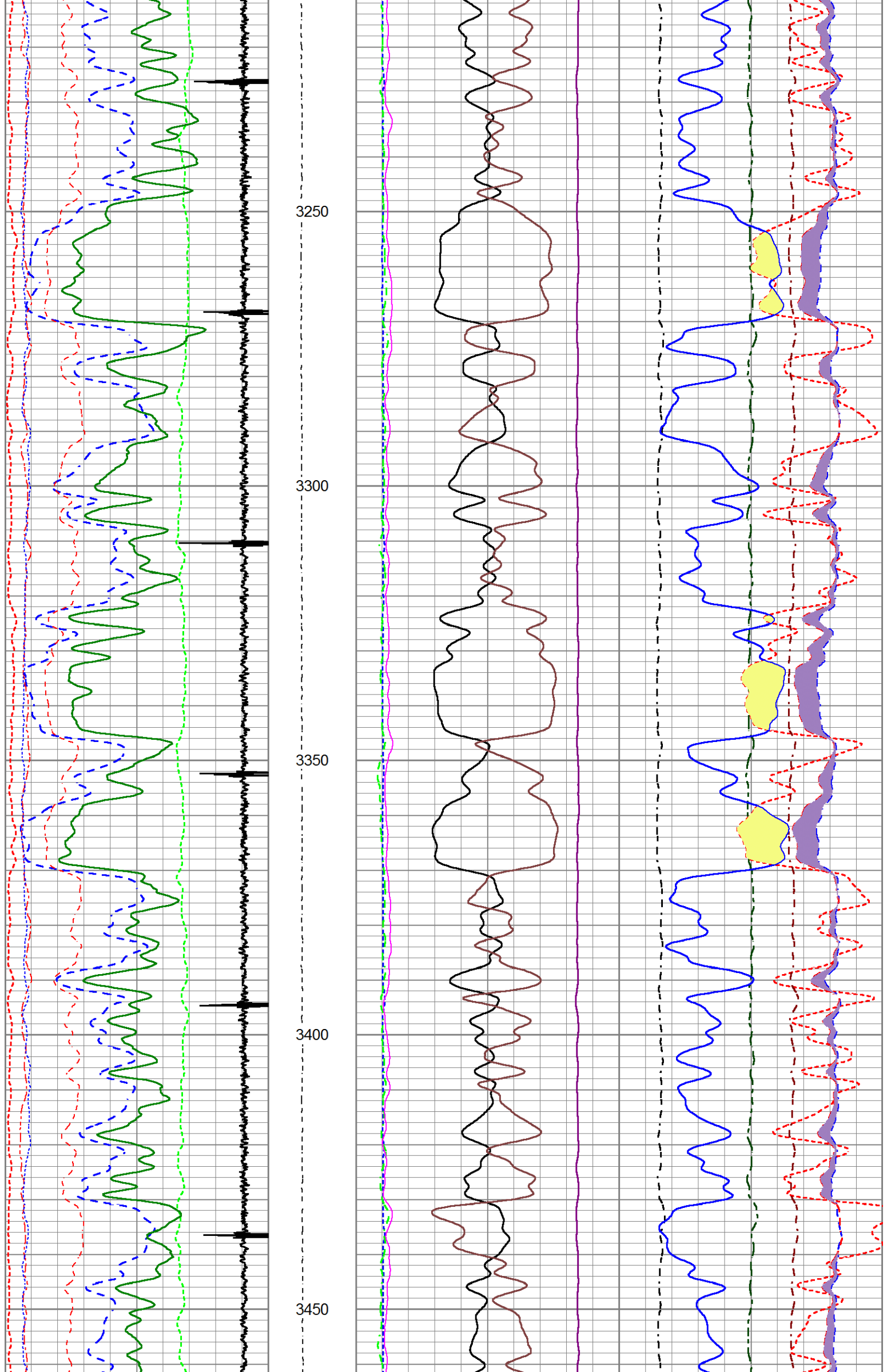
10	FAR FIT ERR (SGFF)	40
0	GR (GAPI)	150
0	NEAR FIT ERR (SGFN)	100
-3500	CCL	350
0	IN FIT ERR (CFTR1) NEAR	1
0	IN FIT ERR CFTR2) FAR	1

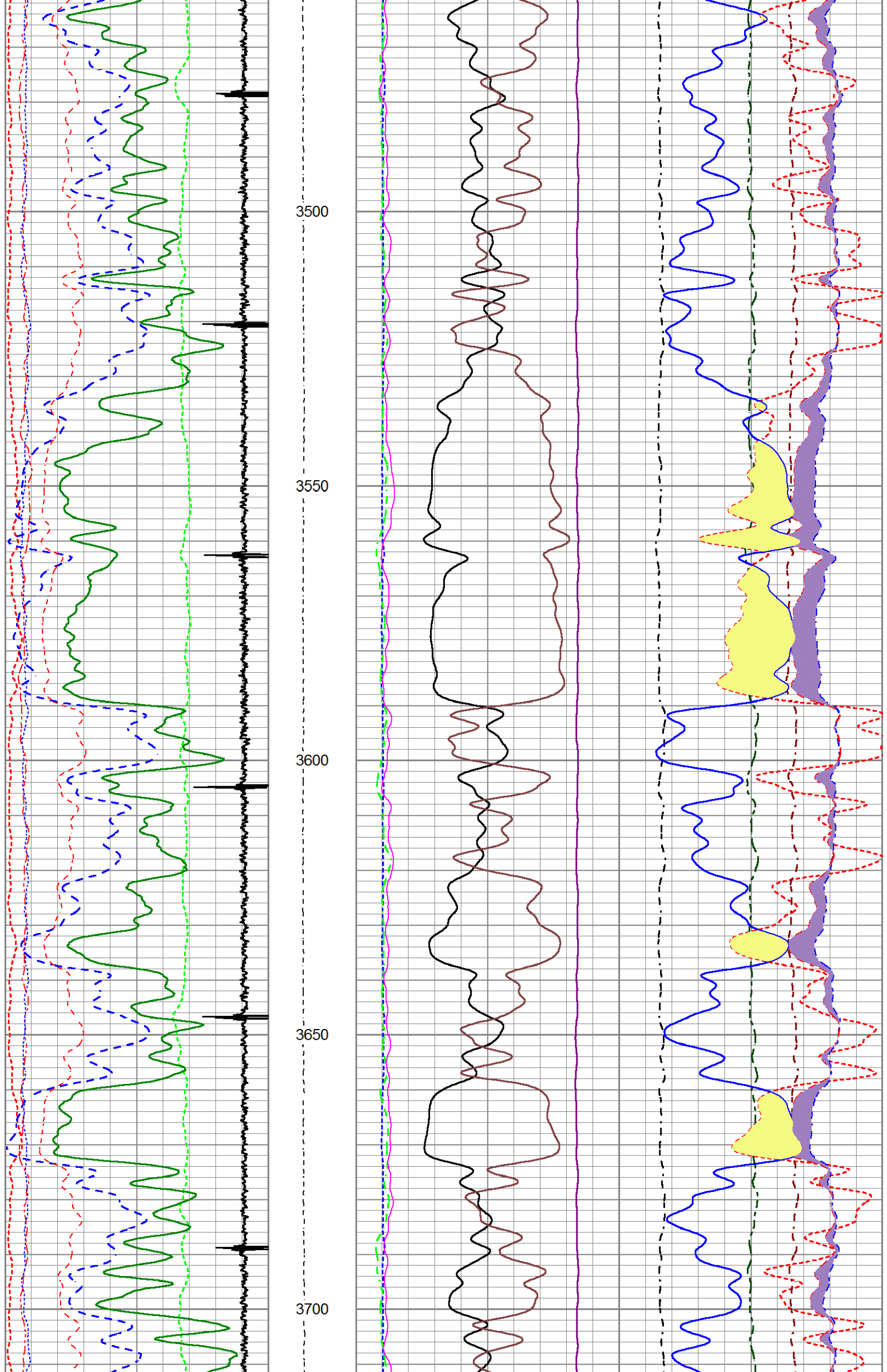
0	RIN	9	60000	Near Counts (NCAP)	0
0	RICF	6	60000	Far Counts (FCAP)	0
0	H YIELD (YH2)	1	100000	FAR INTEL CT (FSIN)	0
0	H YIELD (YH1)	1	10000	(NEAR INTEL CT (NSIN)	0
0.9	PHIT ()	-0.1	ET INL NEAR (NNI		
			INOX2	50000	-1000
				-1500	1500

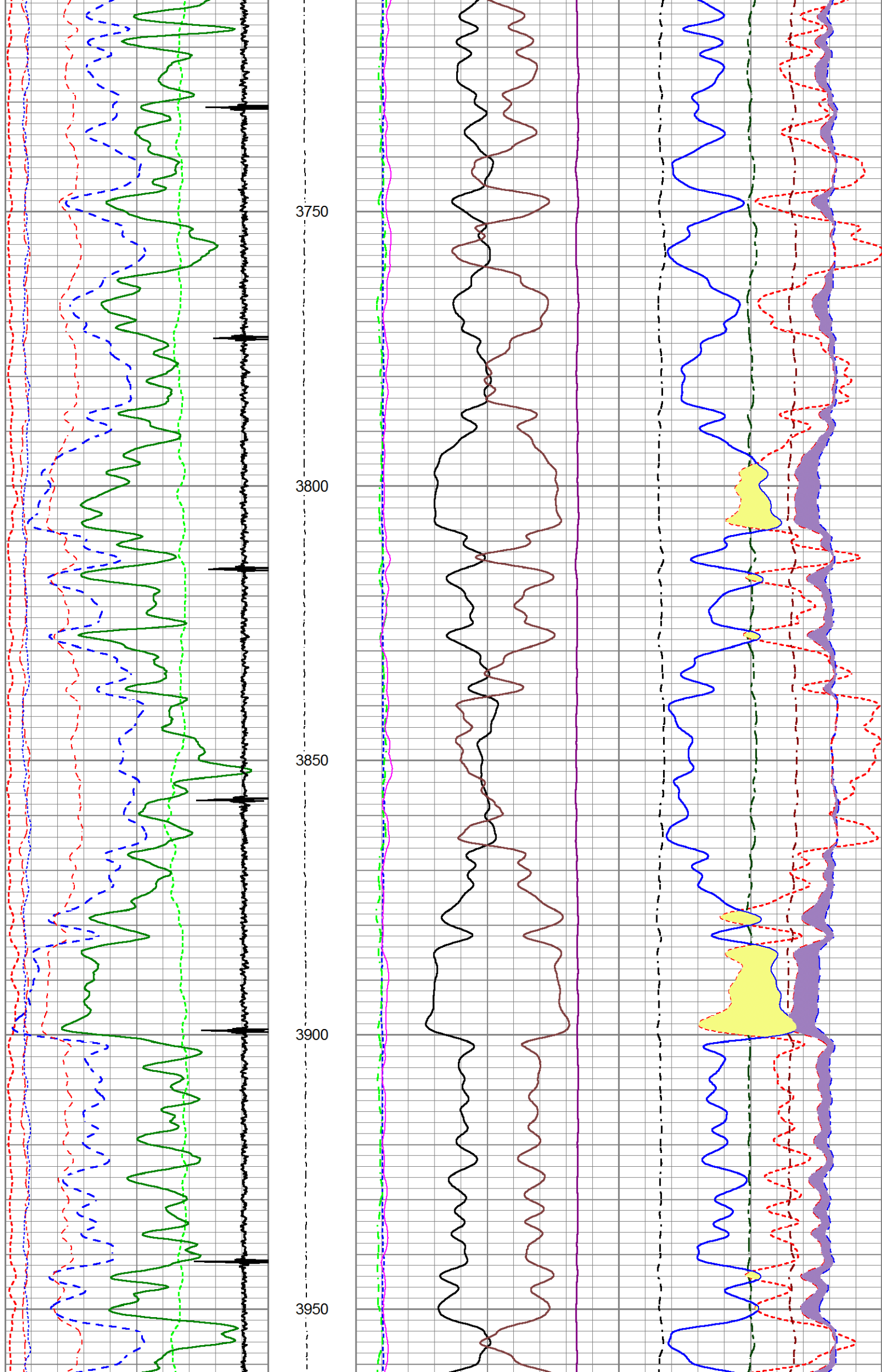


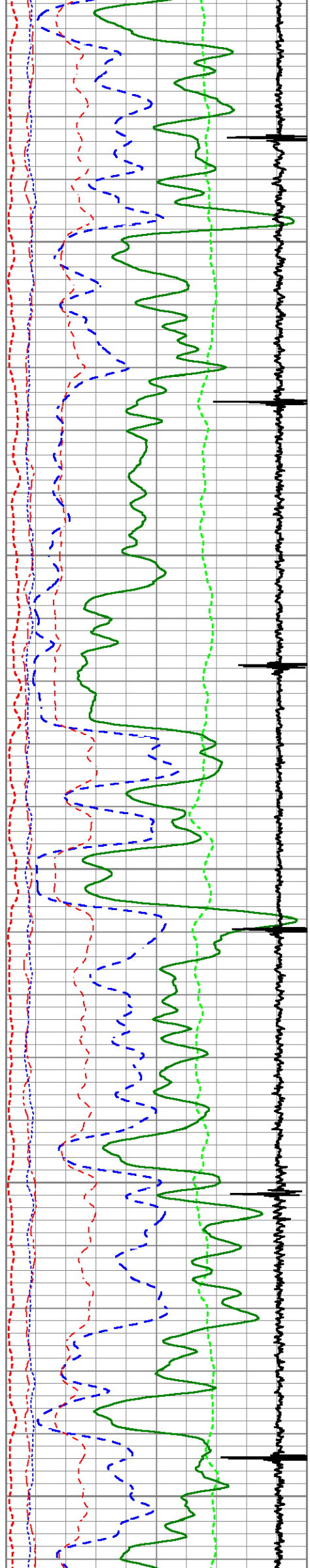




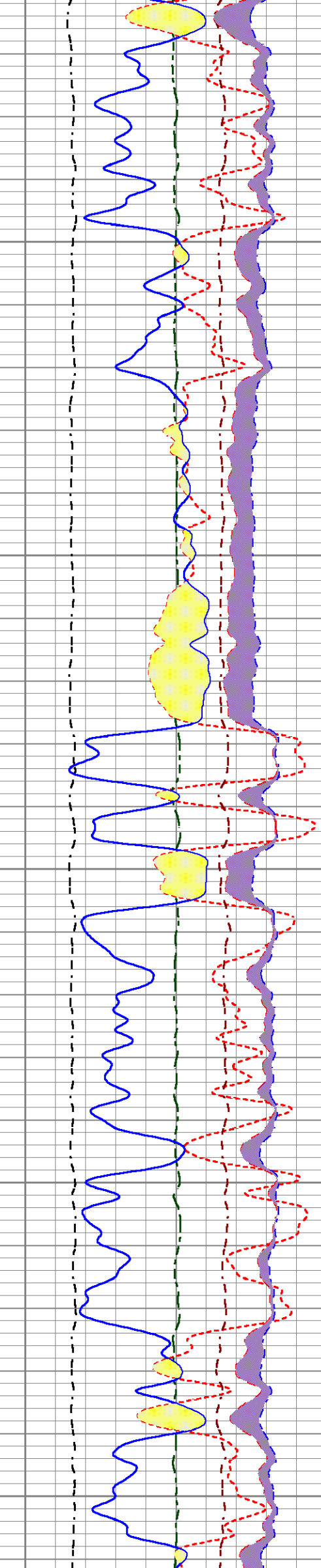


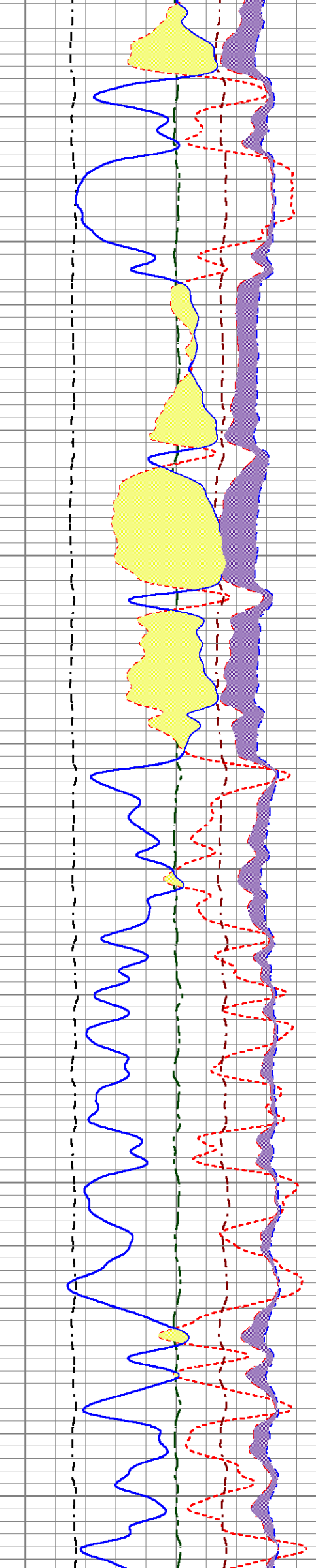
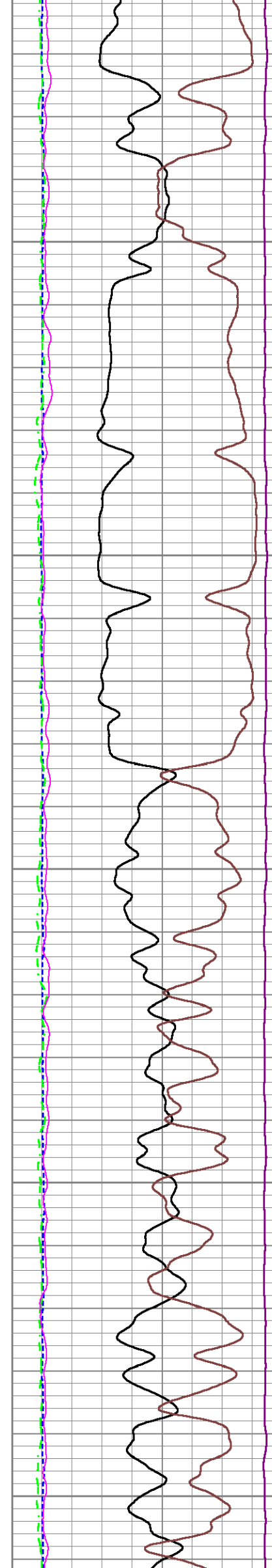
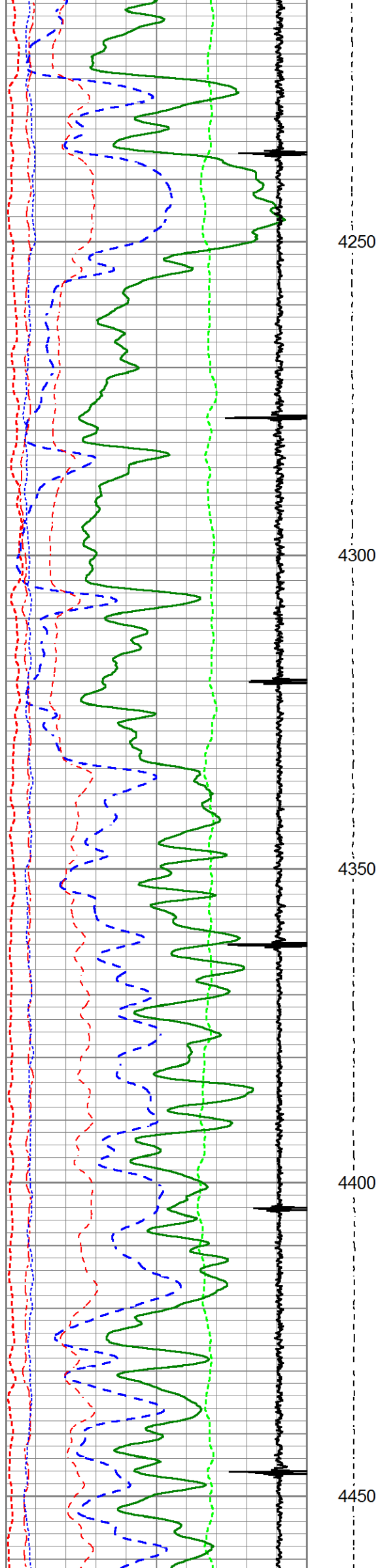


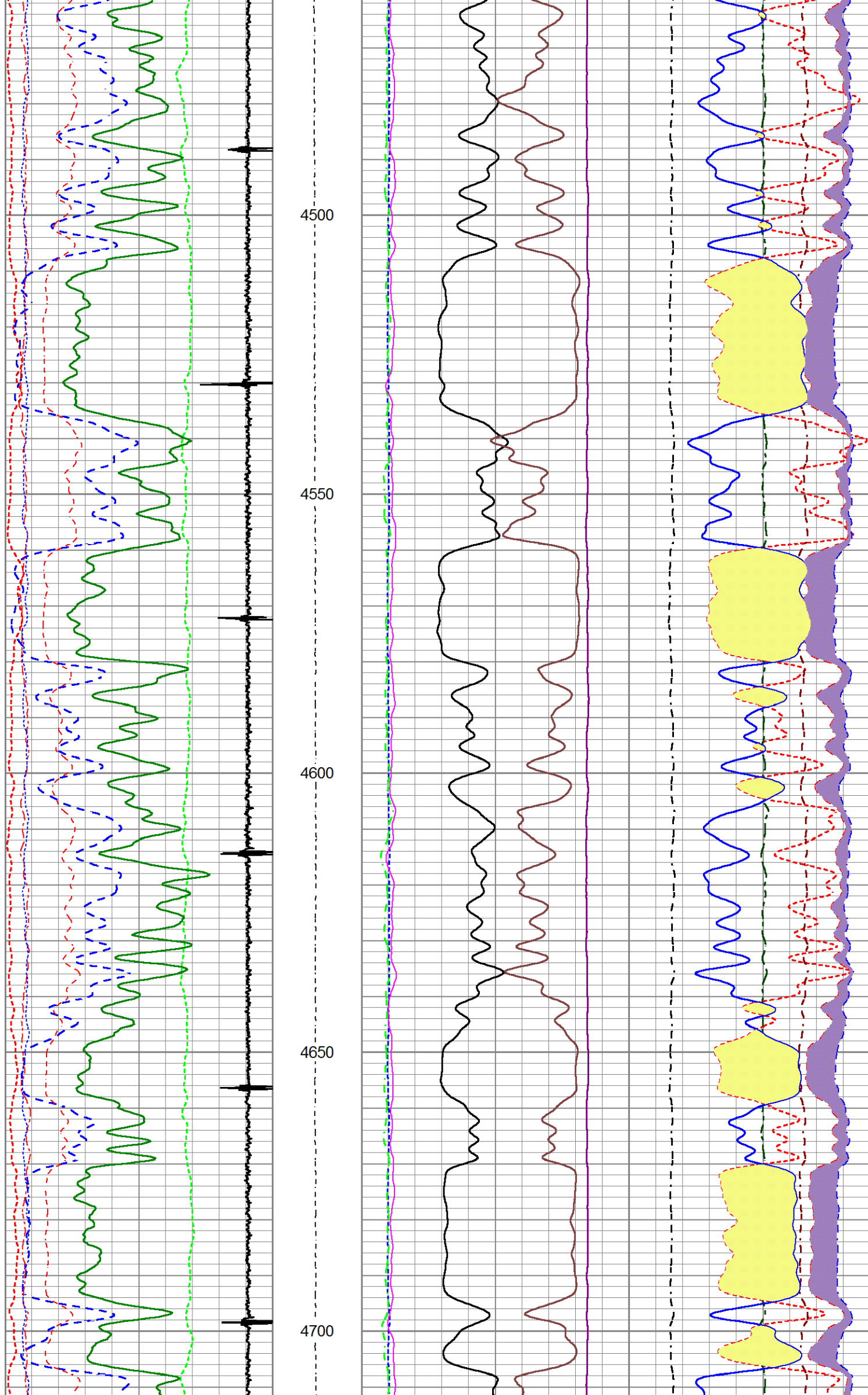


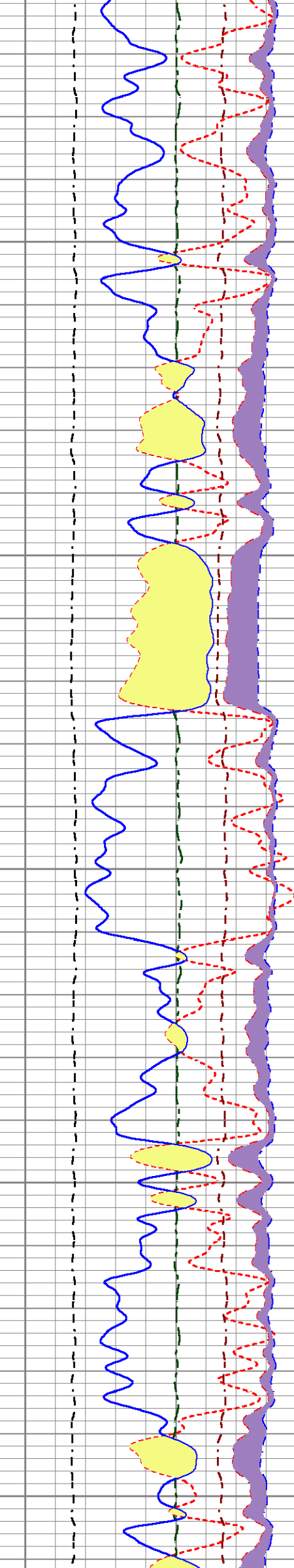
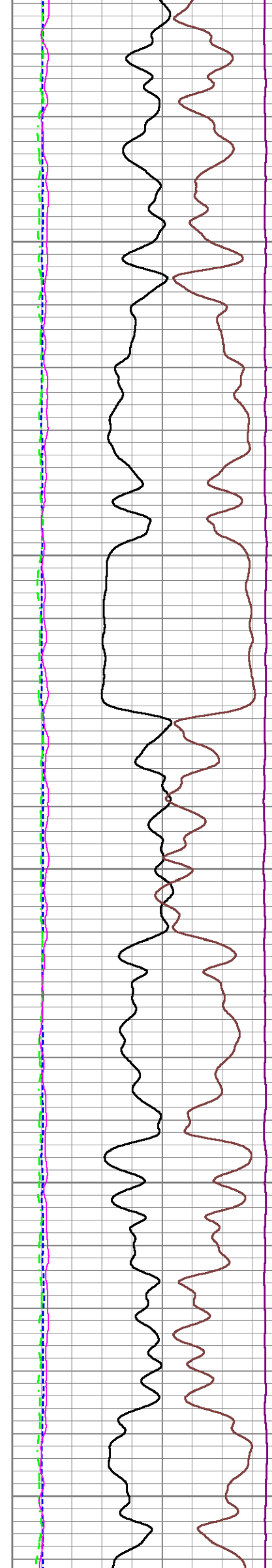
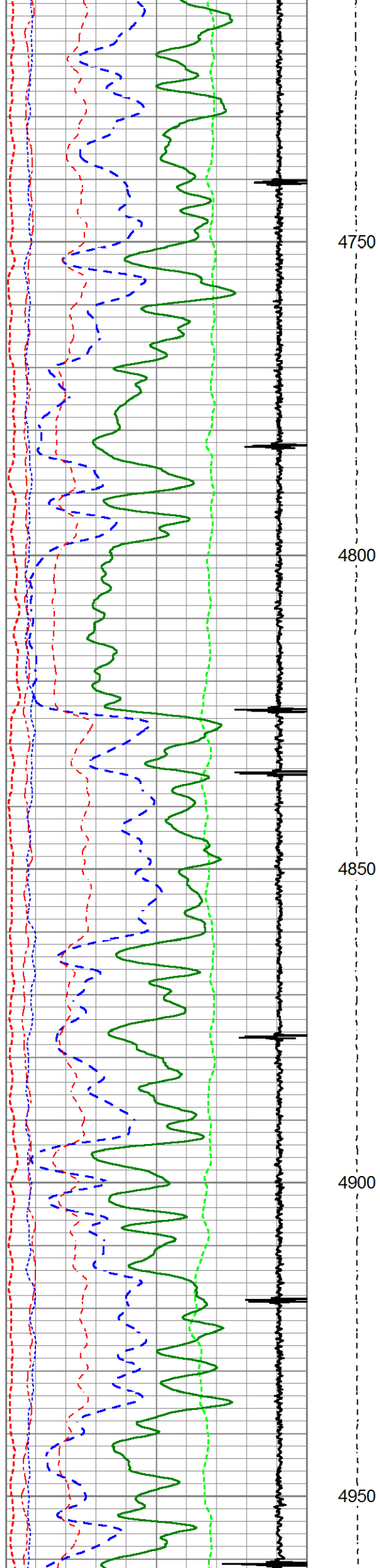


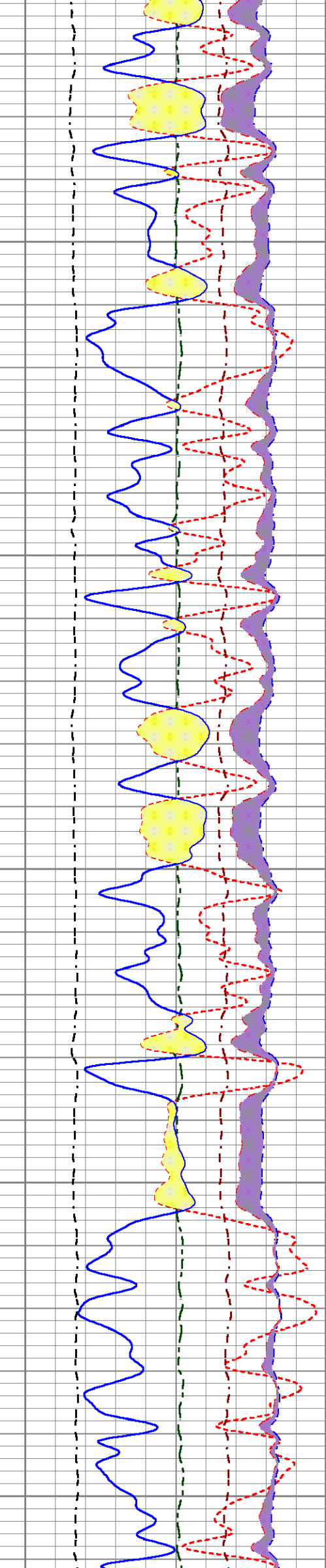
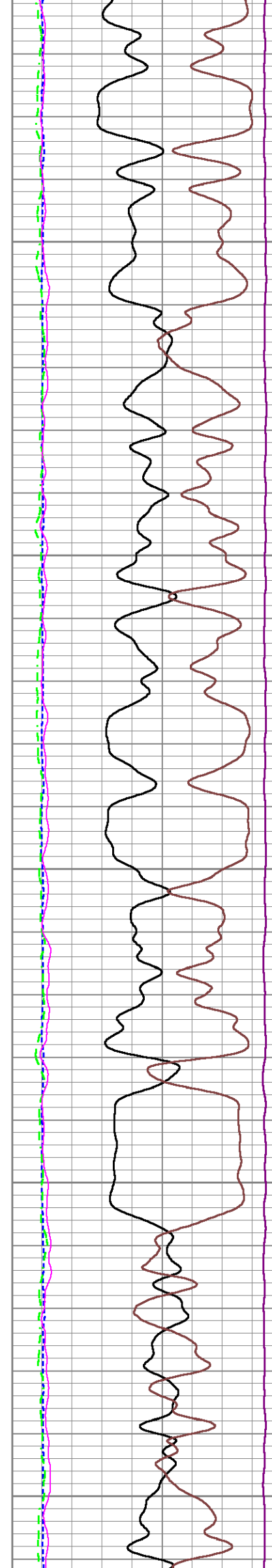
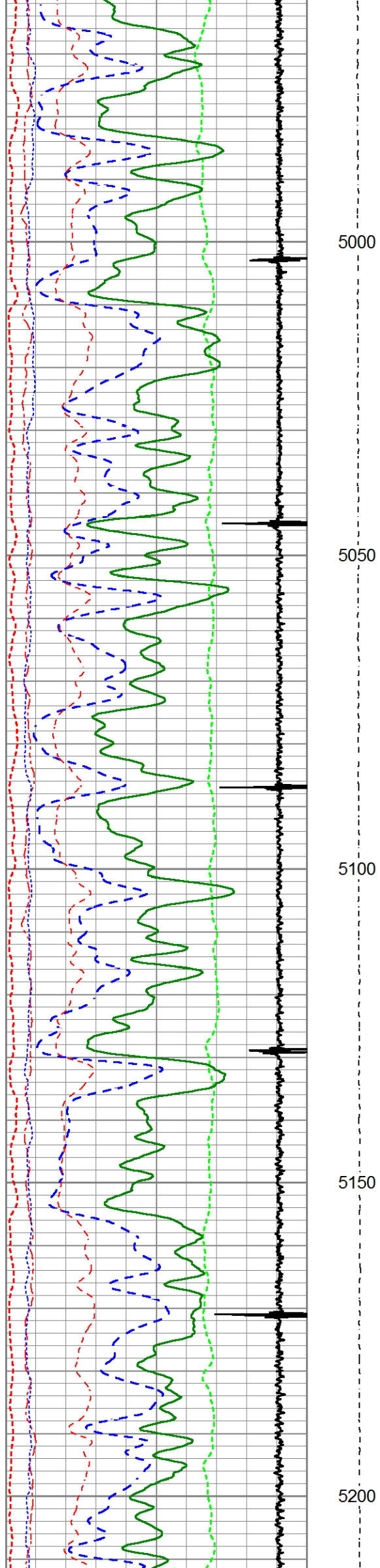
4000
4050
4100
4150
4200

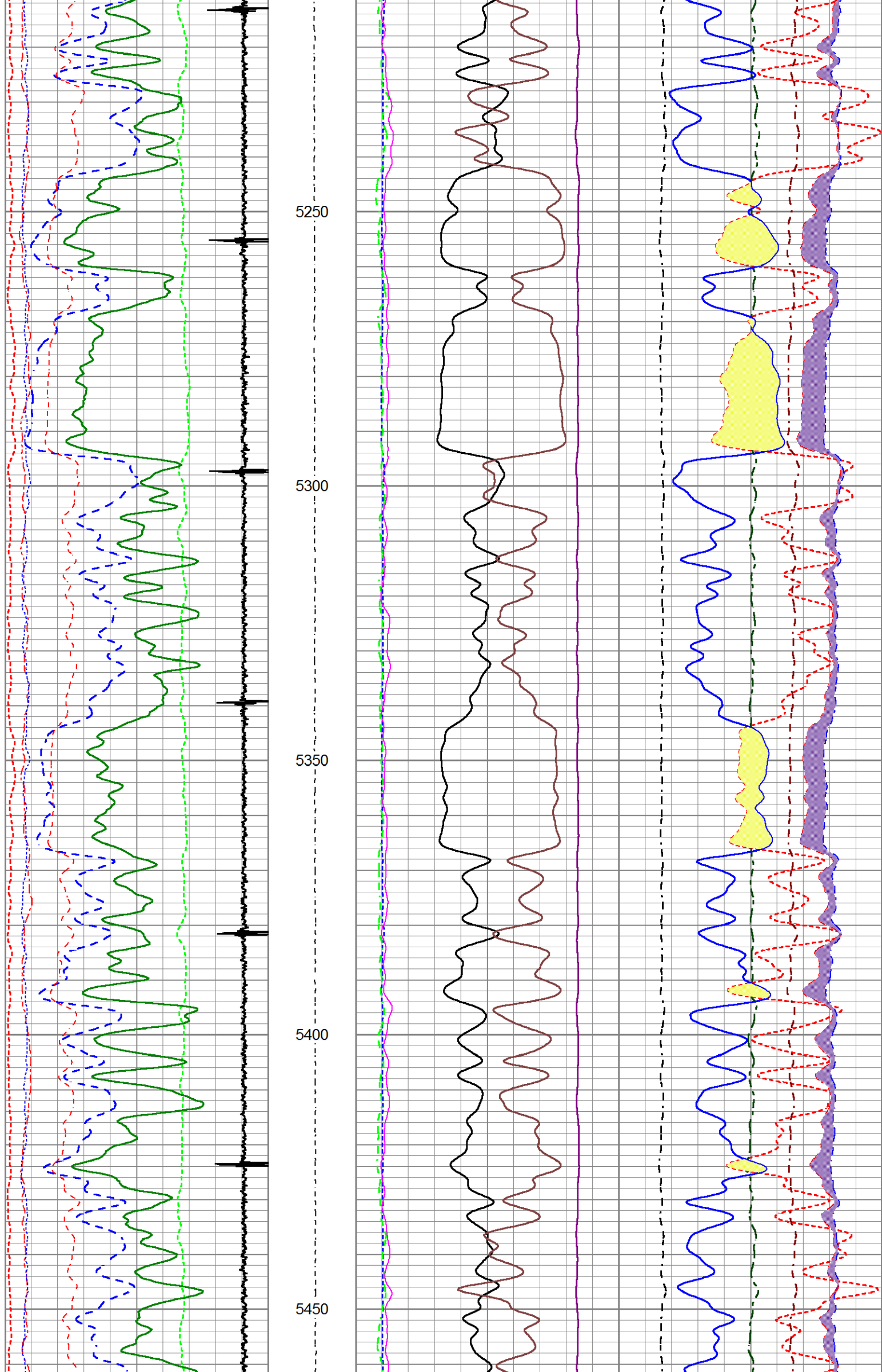


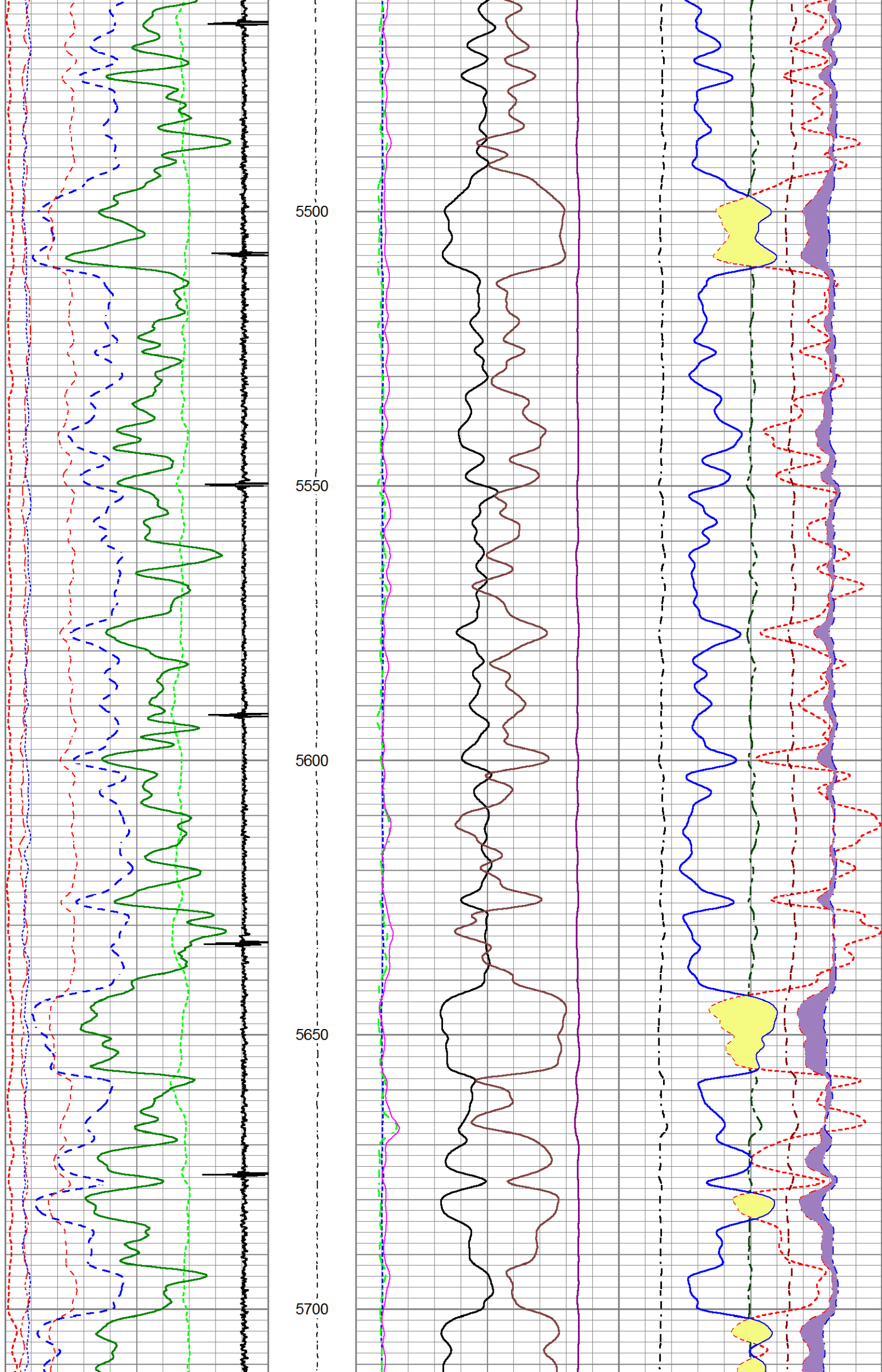


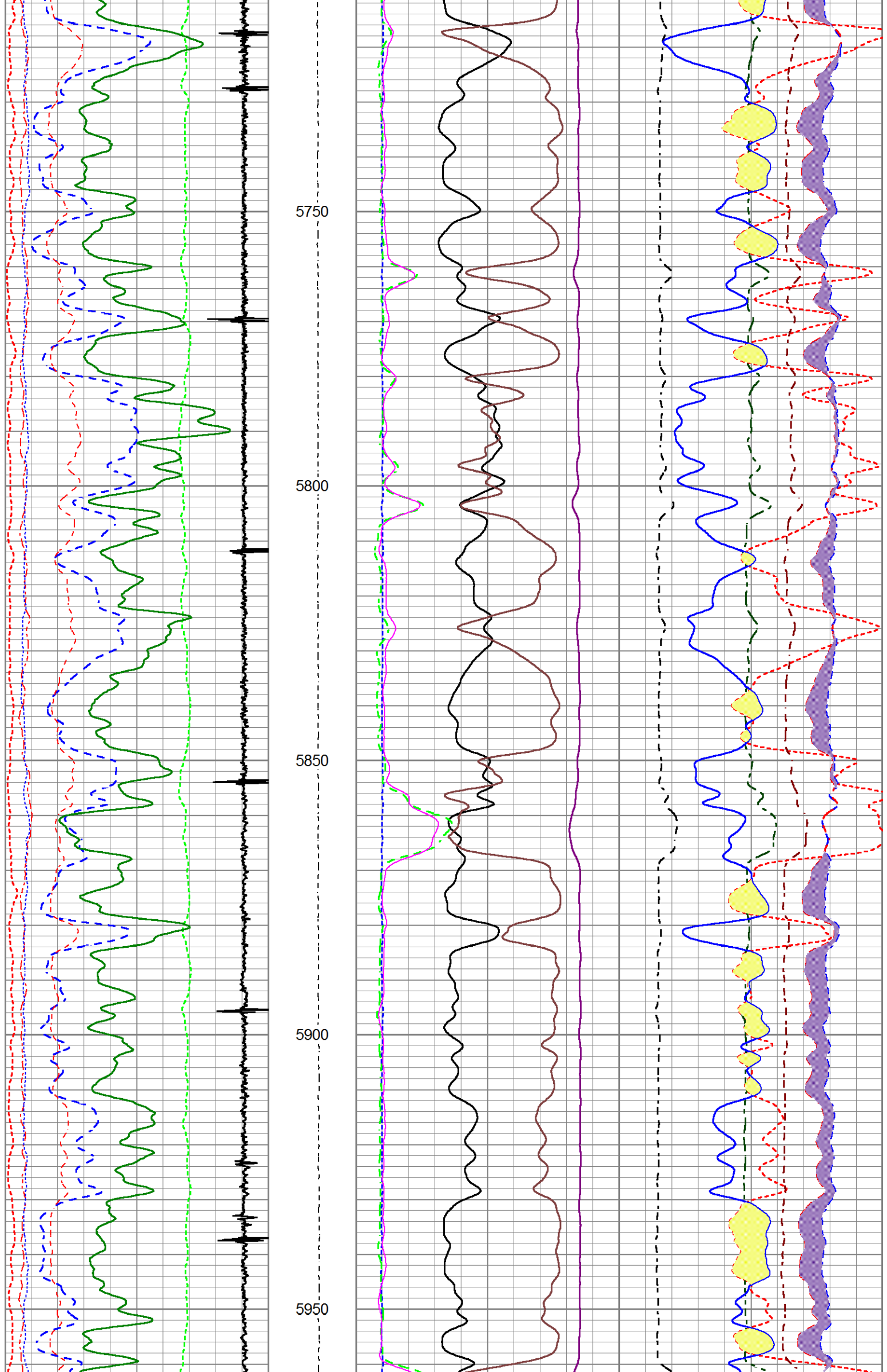


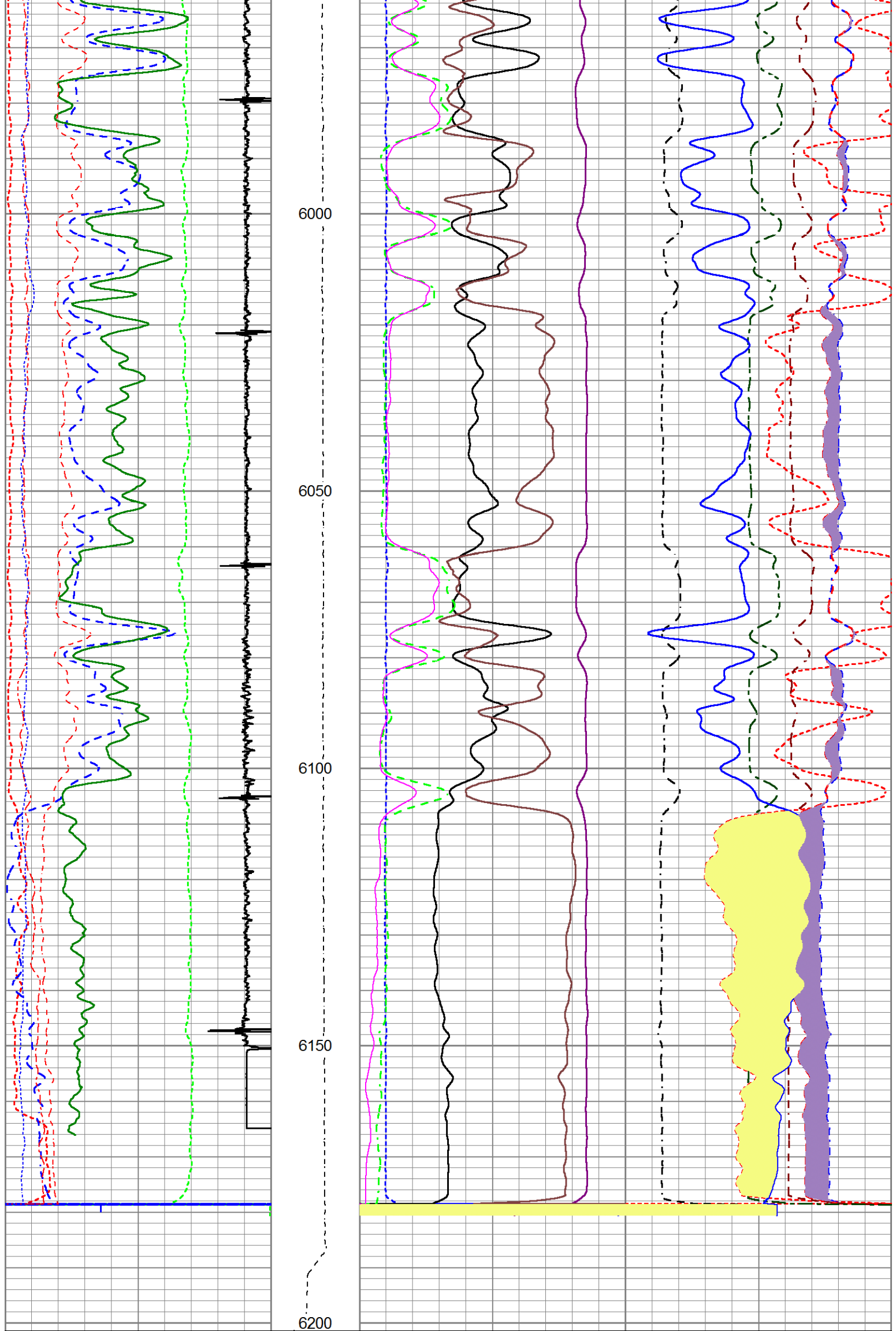












10	FAR FIT ERR (SGFF)	40
0	GR (GAPI)	150
0	NEAR FIT ERR (SGFN)	100
-3500	CCL	350
0	IN FIT ERR (CFTR1) NEAR	1
0	IN FIT ERR CFTR2) FAR	1

0	RIN	9	60000	Near Counts (NCAP)	0
0	RICF	6	60000	Far Counts (FCAP)	0
0	H YIELD (YH2)	1	100000	FAR INTEL CT (FSIN)	0
0	H YIELD (YH1)	1	10000	(NEAR INTEL CT (NSIN)	0
0.9	PHIT ()	-0.1	ET INL NEAR (NNII		
	INOX2		50000	-1000	
	-1500	1500			

MAIN PASS

HALLIBURTON

5"=100'

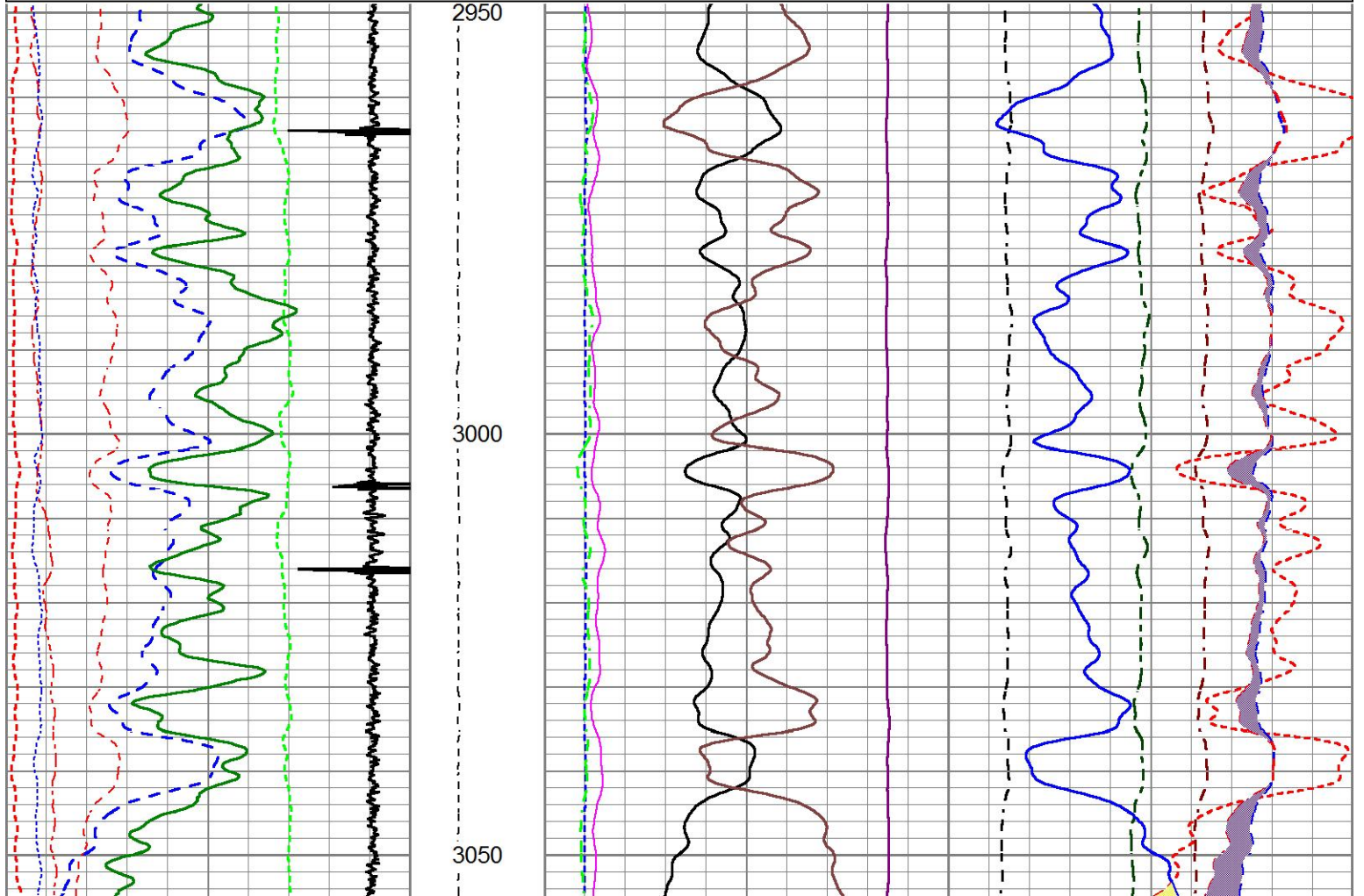
REPEAT PASS

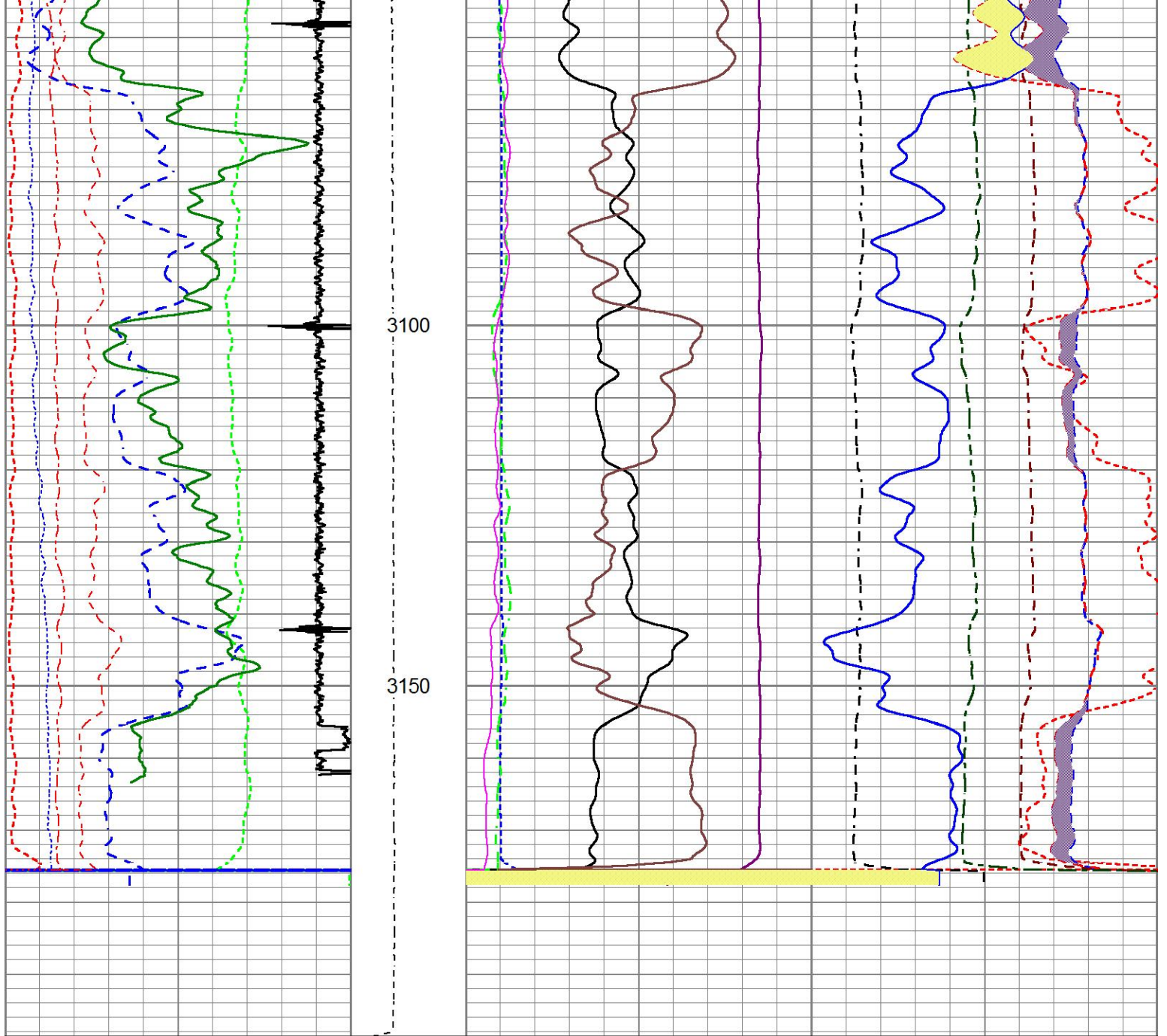
HALLIBURTON

5"=100'

Database File c:\users\h182119\desktop\ursa b&v logs\first 12\b&v 14a-07-07-95\b&v 14a-07-07-95.db
 Dataset Pathname WC/B&V_14A-07-07-95/run1/REPEAT
 Presentation Format Unknown
 Dataset Creation Sat Mar 25 07:36:50 2017
 Charted by Depth in Feet scaled 1:240

200	Near Bore Si (SGBN)	0	TENSION	0	RATIO (RNF)	1			
0	OAI	100	(lb.1800	60	SGIN	0			
10	FAR FIT ERR (SGFF)	40		0	RIN	9	60000	Near Counts (NCAP)	0
0	GR (GAPI)	150		0	RICF	6	60000	Far Counts (FCAP)	0
0	NEAR FIT ERR (SGFN)	100		0	H YIELD (YH2)	1	100000	FAR INTEL CT (FSIN)	0
-3500	CCL	350		0	H YIELD (YH1)	1	10000	(NEAR INTEL CT (NSIN)	0
0	IN FIT ERR (CFTR1) NEAR	1		0.9	PHIT ()	-0.1	ET INL NEAR (NNII		
0	IN FIT ERR CFTR2) FAR	1			INOX2		50000	-1000	
					-1500	1500			





200	Near Bore Si (SGBN)	0
0	OAI	100
10	FAR FIT ERR (SGFF)	40
0	GR (GAPI)	150
0	NEAR FIT ERR (SGFN)	100
-3500	CCL	350
0	IN FIT ERR (CFTR1) NEAR	1
0	IN FIT ERR CFTR2) FAR	1

TENSION	0	RATIO (RNF)	1
(lb 1800	60	SGIN	0
0	RIN	9	60000 Near Counts (NCAP)
0	RICF	6	60000 Far Counts (FCAP)
0	H YIELD (YH2)	1	100000 FAR INTEL CT (FSIN)
0	H YIELD (YH1)	1	10000(NEAR INTEL CT (NSIN)
0.9	PHIT ()	-0.1	ET INL NEAR (NNII
	INOX2	50000	-1000
	-1500	1500	

REPEAT PASS

HALLIBURTON

5"=100'

Calibration Report

Database File C:\Users\H182119\Desktop\URSA B&V LOGS\FIRST 12\B&V 14A-07-07-95\b&v 14a-07-07-95.db
 Dataset Pathname WC/B&V_14A-07-07-95/run1/MAIN
 Dataset Creation Sat Mar 25 08:13:29 2017

Cement Bond Log Shop Calibration Report

Serial-Model: 12091454-A

Calibration Performed: Sat Mar 25 07:11:53 2017

Free Pipe Calibration

	Measured	Units
TT	246.0	usec
Amplitude	593.2	mV
Log Base Line	14.3	mV

Calibration References and Gain

Name	Value	Units
Pipe O.D.	4.500	in
Pipe Weight	11.6	lb/ft
Pipe Ref. Amp.	81.2	mV
Amp. Gain	0.140	

Reservoir Monitor Tool I Calibration Report

Serial-Model: 11917905-A
 Shop Calibration Performed: Sat Aug 27 14:12:23 2016

Carbon/Oxygen Mode

Stabilization

Result	Logged	Expected Value	Diff.	Tol.	Units
GENV	87.00	80.00	7.00	+/-15.00	V
ITCR2	3097	3250	-153	+/-250	cps

Near Detector

	Channel	Expected Value	Amplitude	FWHM	Tol.
H	60	60 +/-2	0.0293	5.38	<6.00
Fe	206	206 +/-2	0.1005	----	----
NGAIN = 0.996		NZOFF = 0.5			

Far Detector

	Channel	Expected Value	Amplitude	FWHM	Tol.
H	60	60 +/-2	0.0381	5.90	<6.50
Fe	209	208 +/-2	0.0928	----	----
FGAIN = 0.990		FZOFF = 0.9			

Flask Temperature 64.9 degF

Result	Logged	Expected Value	Diff.	Tol.	Units
COIR2	0.44	0.45	-0.01	+/-0.02	
LIRI2	1.38	1.36	0.02	+/-0.05	
TCCR2	3970	4000	-30	+/-1000	cps
ITCR2	3128	3200	-72	+/-250	cps

Sigma Mode

Stabilization

Result	Logged	Expected Value	Diff.	Tol.	Units
GENV	86.00	80.00	6.00	+/-15.00	V
FCAP	10019	10000	19	+/-500	cps

Horizontal Water Tank

Result	Logged	Expected Value	Diff.	Tol.	Units
N/F Normalizer	0.98	0.95	0.03		
N/F Inel Norm	0.64	0.61	0.03		
RNF	1.02	1.07	-0.05	+/-0.12	
RINC	1.57	1.64	-0.07	+/-0.18	

RMS	1.87	1.87	0.07	+/-0.10	
SGFN	24.14	24.00	0.13	+/-0.50	cu
SGFF	22.92	22.85	0.07	+/-0.50	cu
FSIN	24190	24000	190	+/-2000	cps
FCAP	10200	10000	200	+/-1000	cps
NFTR	0.83			<5.00	
FFTR	0.94			<5.00	
NBKG	219			<500	cps
FBKG	103			<500	cps
RTN	0.40	0.40	-0.00	+/-0.10	usec
RTF	0.43	0.40	0.03	+/-0.10	usec

Calibration Software Modules

HRMTI Module 2015.5.4.0
RMTI Module 2015.10.16.1

Log Data Acquisition Software Modules

HRMTI Module 2015.5.4.0
RMTI Module 2015.10.16.1

Gamma Ray Calibration Report

Type / Serial: 002 / 11224502

SHOP CALIBRATION

Mon Feb 27 11:33:38 2017

	Counts/Sec.	Gain	Offset	Jig	Units
Background	29.0				cps
Calibrator	296.5				cps
		1.3758			GAPI/cps

PRIMARY VERIFICATION


Background	39.1				cps
Calibrator	412.9				cps
Difference				373.7	GAPI

BEFORE SURVEY VERIFICATION

Background	0.0				cps
Calibrator	0.0				cps
Difference				0.0	GAPI

AFTER SURVEY VERIFICATION

Background	0.0				cps
Calibrator	0.0				cps
Difference				0.0	GAPI

Sensor	Offset (ft)	Schematic	Description	Length (ft)	O.D. (in)	Weight (lb)
			STNDCH-STND_CH 1.4375 IN CABLE HEAD	1.50	1.44	1.00
CCL	35.86					
GR	33.60		TTTCU-002 (11224502) Through Tubing Telemetry Cartridge - Ultrawire	7.65	1.69	37.00
			XHU-003 (11899561) Crossover Halliburton 1553 to Ultrawire	1.58	1.69	7.00

RmtTFGT	22.95							
RmtTNGT	22.45							
				RMTI-A (11917905) Halliburton RMTI Tool	14.00	2.13	77.00	
RmtFP5V	14.70			X-OVER-SondexxGo Sondex Box x Go Pin Cross Over	0.31	1.69	1.00	
RmtNFwwMcsPI	14.70			CENT-CASTM-CENT CAST M INLINE CENTRALIZER	2.16	3.13	25.00	
RmtCommFWa	14.70							
Temp	9.57							
TT3FT	7.32			HCBLM-A (12091454) Halliburton HCBLM Tool	9.38	2.75	116.00	
AMP3FT	7.32							
WVF5FT	6.36							
WVF3FT	2.84			CENT-CASTM-CENT CAST M INLINE CENTRALIZER	2.16	3.13	25.00	
LLMTEN	0.00			AUH-001 (11703517) Adaptor Ultrawire/Halliburton	0.38	1.69	3.00	
				BUL-001 (000001) Bullnose	0.30	1.69	1.50	

Dataset: b&v 14a-07-07-95.db: WC/B&V_14A-07-07-95/run1/MAIN
 Total length: 39.43 ft
 Total weight: 293.50 lb
 O.D.: 3.13 in

Company	URSA OPERATING COMPANY		
Well	B&V 14A-07-07-95		
Field	WILDCAT		
County	Garfield	State	CO
HALLIBURTON	RESERVOIR MONITOR LOG GR-CCL		