

LEGEND:

 **PROPOSED LOCATION**



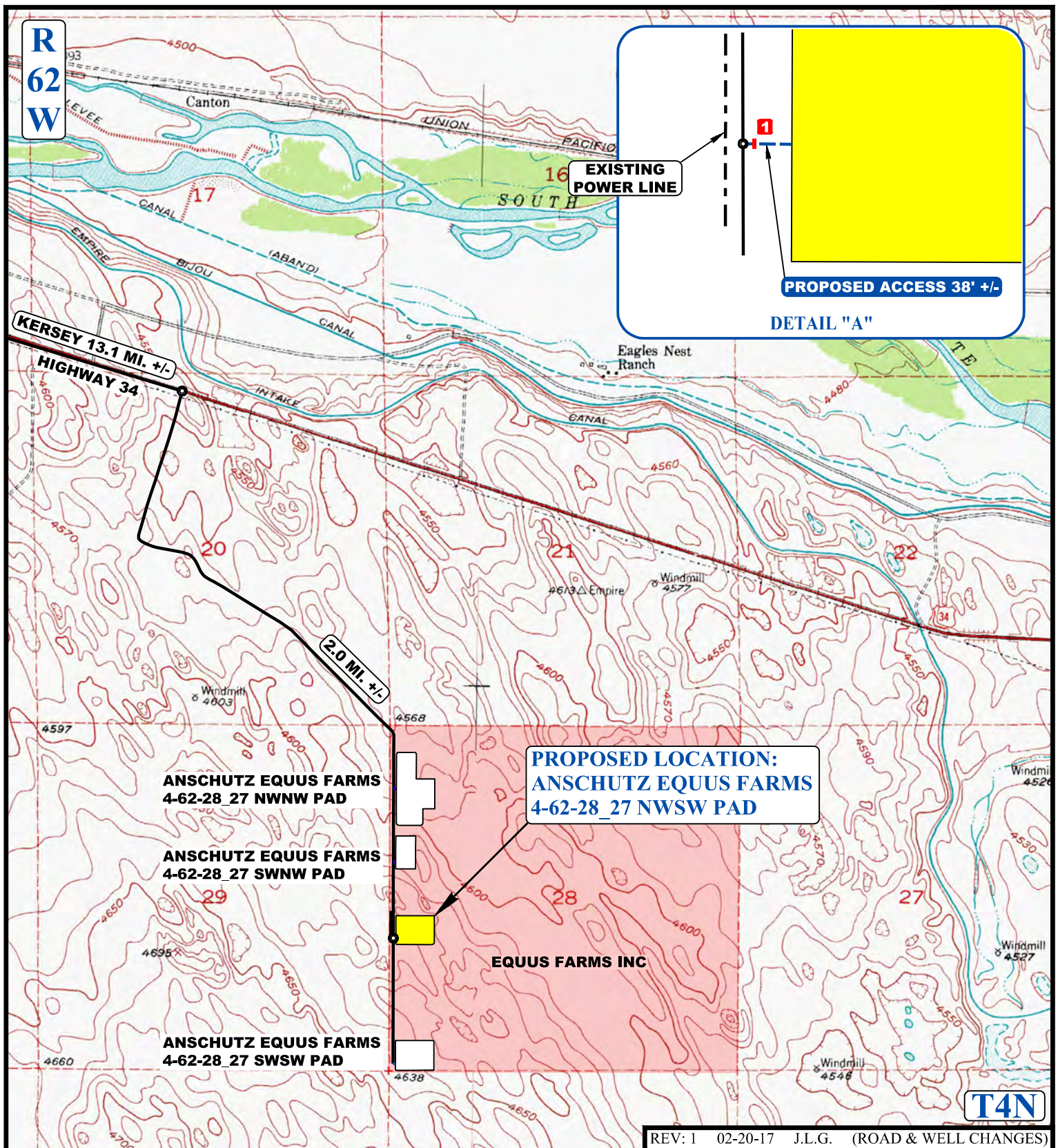
BILL BARRETT CORPORATION

ANSCHUTZ EQUUS FARMS 4-62-28 27 NWSW PAD
NW 1/4 SW 1/4, SECTION 28, T4N, R62W, 6th P.M.
WELD COUNTY, COLORADO



UELS, LLC
 Corporate Office * 85 South 200 East
 Vernal, UT 84078 * (435) 789-1017

SURVEYED BY	C.M.	12-21-16	SCALE
DRAWN BY	J.L.G.	01-13-17	1 : 100,000
ACCESS ROAD MAP			TOPO A



NOTE: PARCEL DATA SHOWN HAS BEEN OBTAINED FROM VARIOUS SOURCES AND SHOULD BE USED FOR MAPPING, GRAPHIC AND PLANNING PURPOSES ONLY. NO WARRANTY IS MADE BY UINTAH ENGINEERING AND LAND SURVEYING (UELS) FOR ACCURACY OF THE PARCEL DATA.

LEGEND:

- EXISTING ROAD
- - - PROPOSED ROAD
- - - EXISTING POWER LINE
- 1** INSTALL 18" CULVERT



UELS, LLC
Corporate Office * 85 South 200 East
Vernal, UT 84078 * (435) 789-1017



BILL BARRETT CORPORATION

ANSCHUTZ EQUUS FARMS 4-62-28 27 NWSW PAD
NW 1/4 SW 1/4, SECTION 28, T4N, R62W, 6th P.M.
WELD COUNTY, COLORADO

SURVEYED BY	C.M.	12-21-16	SCALE
DRAWN BY	J.L.G.	01-13-17	1 : 24,000
ACCESS ROAD MAP			TOPO B