

RESERVOIR MONITORING TOOL - ELITE

****THANK YOU FOR CHOOSING HALLIBURTON ENERGY SERVICES****

Service Ticket No.	903920774	API No.	05045228460000	PGM Ver	WARRIOR 8.0
The Well Name, Location, Borehole Description, and / or Cementing Data Furnished by Client					
EQUIPMENT DATA					
GAMMA		CBL		RMT	
Run No.	ONE	Run No.	ONE	Run No.	ONE
Serial No.	12159411	Serial No.	11836468	Serial No.	12376244
Model No.	TTTCU-002	Model No.	CBL-M	Model No.	RMTi
Diameter	1.69"	Diameter	2.75"	Diameter	2.75"
LOGGING DATA					
General Data					
Pass	Depths		Well Head	Speed	Logging Run Comments
No	From	To	Pressure	Ft/Min	

No.	TD	SURFACE CSG	14.7 PSI	20			
ONE							
	GAMMA		CBL		RMTI		
Pass	Scale		Scale		Scale		Scale
No.	L	R	L	R	L	R	L L
ONE	0	150	0	100	60	0	
DIRECTIONAL INFORMATION							
Maximum Deviation		deg. @		KOP			

HALLIBURTON

MAIN PASS

5" = 100'

Database Filec:\users\h182119\desktop\ursa b&v logs\second 12\b&v 33d-07-07-95\33d.db

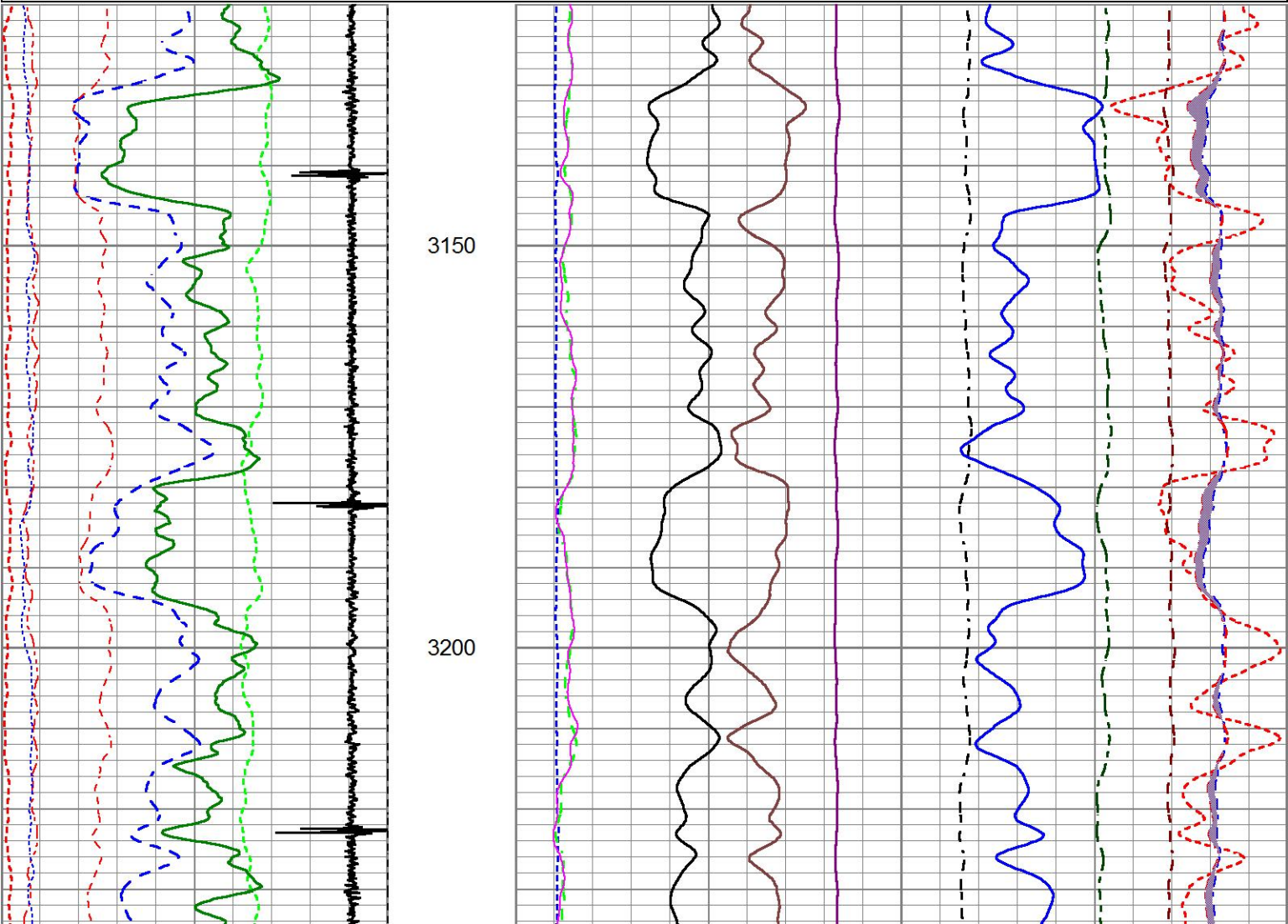
Dataset PathnameMAIN

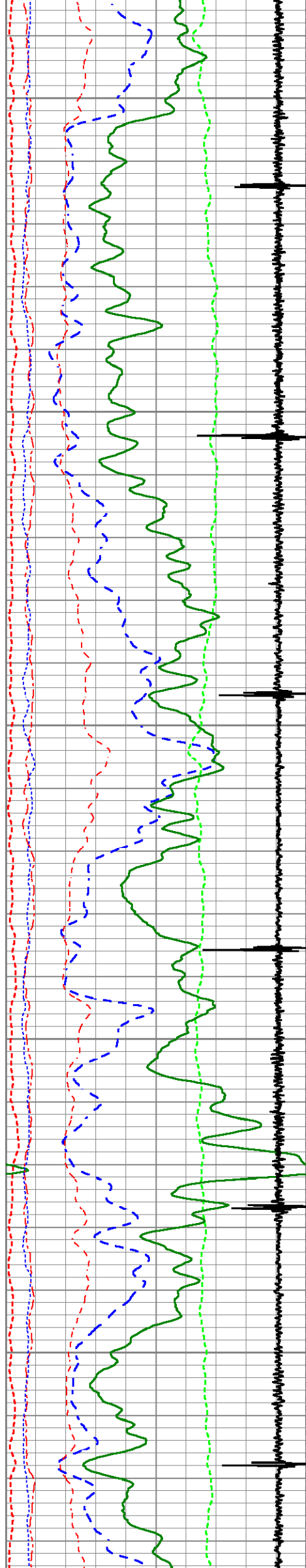
Presentation FormatUnknown

Dataset CreationMon Mar 27 06:17:20 2017

Charted byDepth in Feet scaled 1:240

200	Near Bore Si (SGBN)	0	TENSION	0	RATIO (RNF)		1
0	OAI	100	0 (lb 1800	60	SGIN		0
10	FAR FIT ERR (SGFF)	40		0	RIN	9	60000 Near Counts (NCAP)
0	GR (GAPI)	150		0	RICF	6	60000 Far Counts (FCAP)
0	NEAR FIT ERR (SGFN)	100		0	H YIELD (YH2)	1	100000 FAR INTEL CT (FSIN)
-3500	CCL	350		0	H YIELD (YH1)	1	10000(NEAR INTEL CT (NSIN)
0	IN FIT ERR (CFTR1) NEAR	1		0.9	PHIT ()	-0.1	ET INL NEAR (NNII
0	IN FIT ERR CFTR2) FAR	1			INOX2		50000 -1000
					-1500	1500	





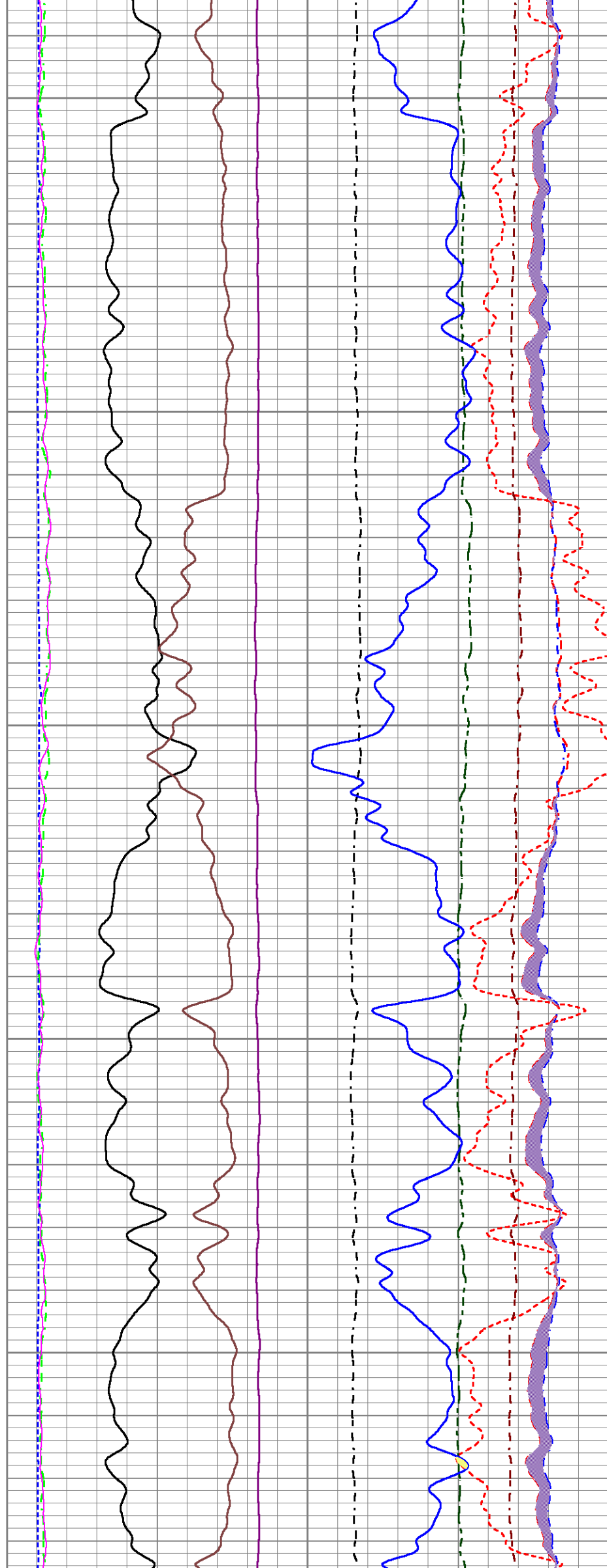
3250

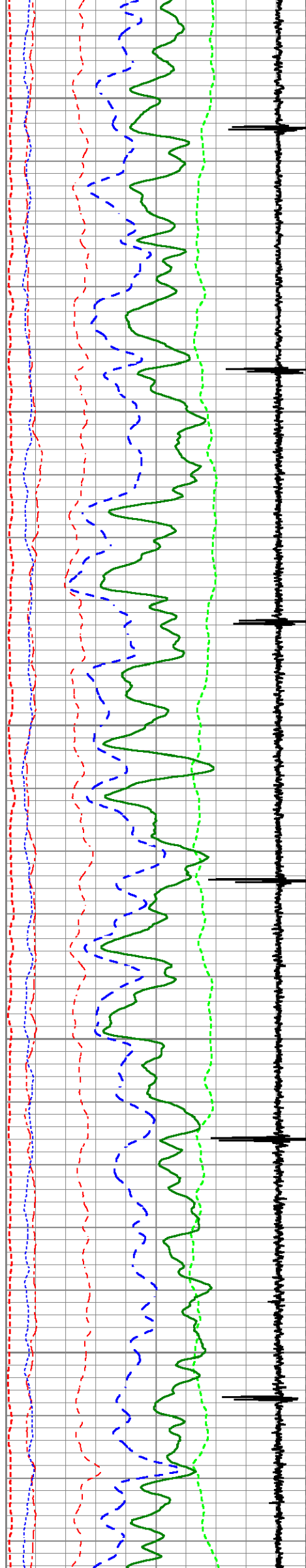
3300

3350

3400

3450





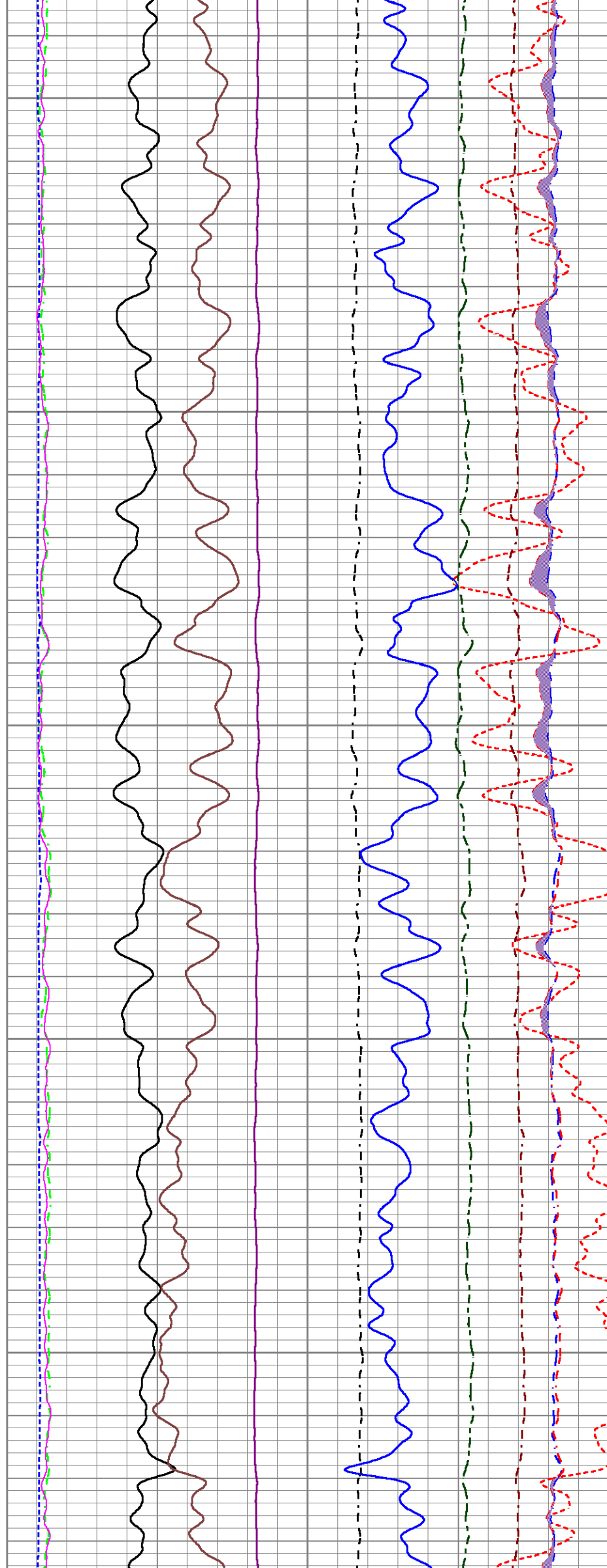
3500

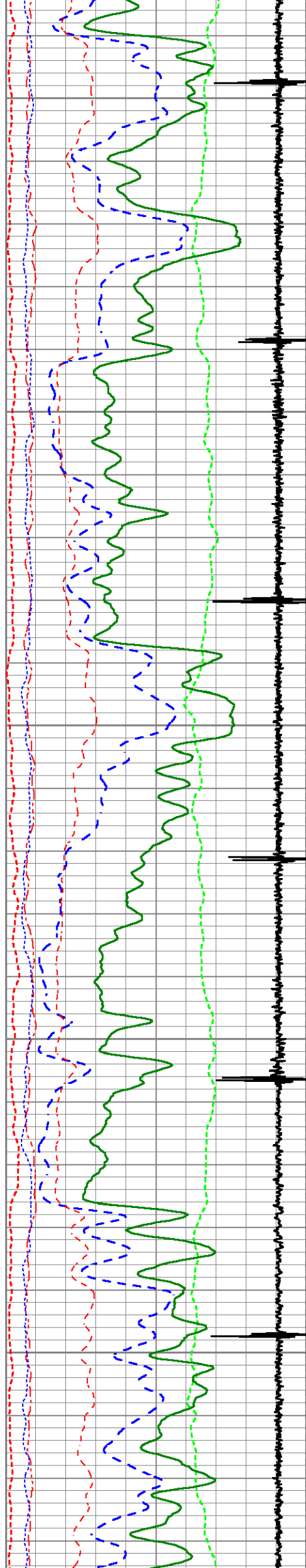
3550

3600

3650

3700





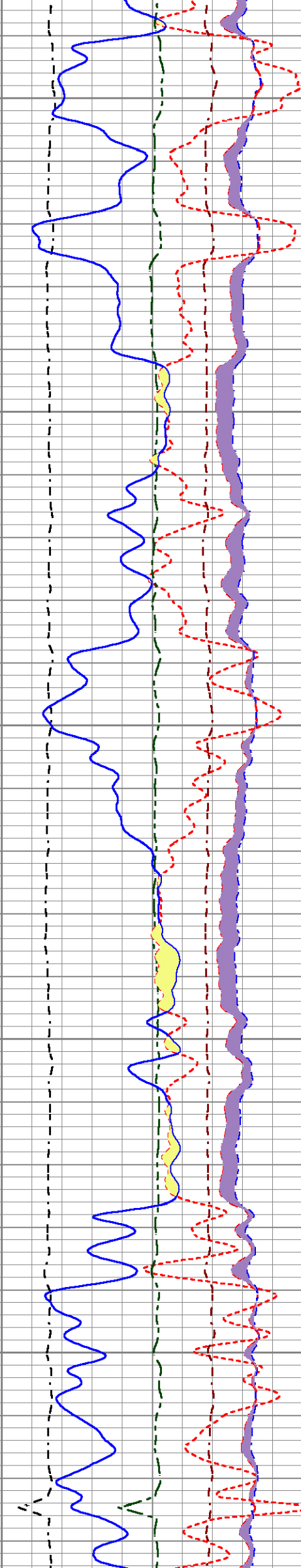
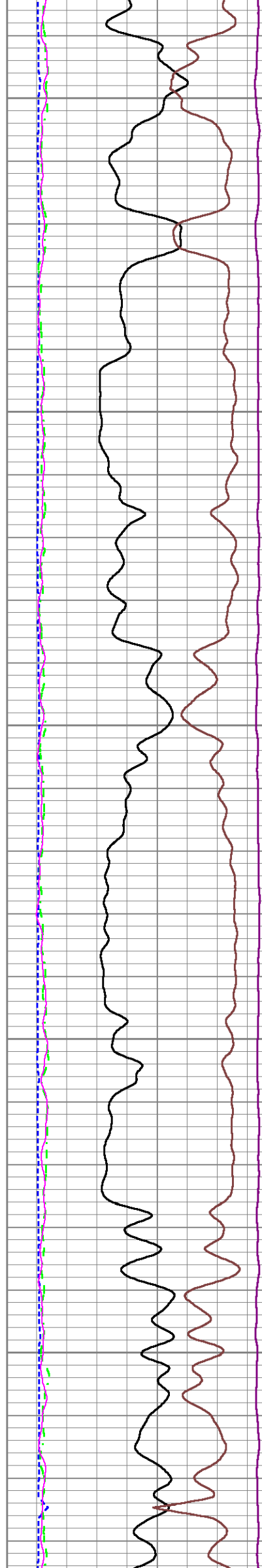
3750

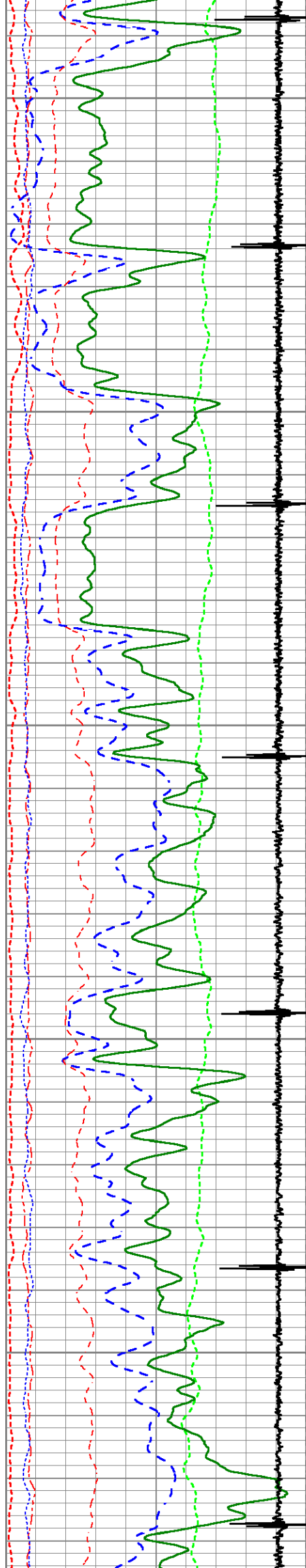
3800

3850

3900

3950





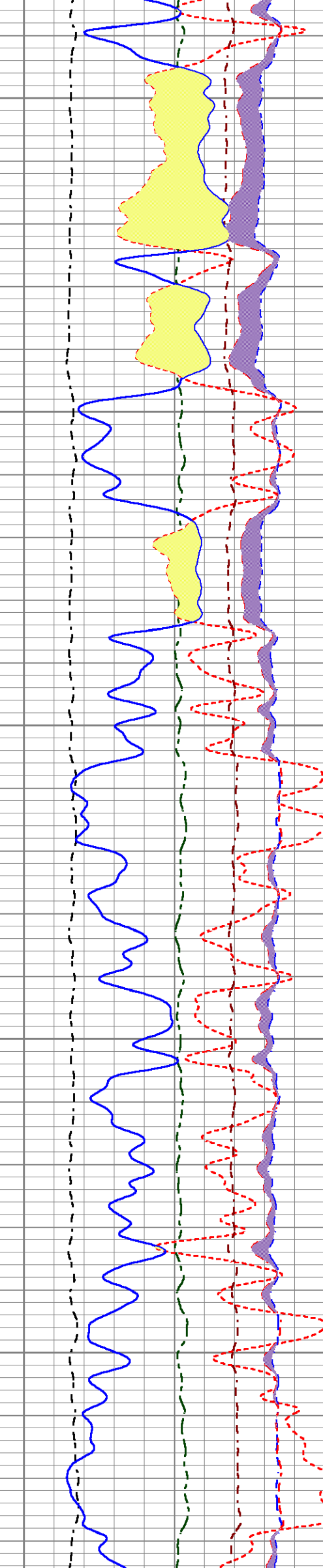
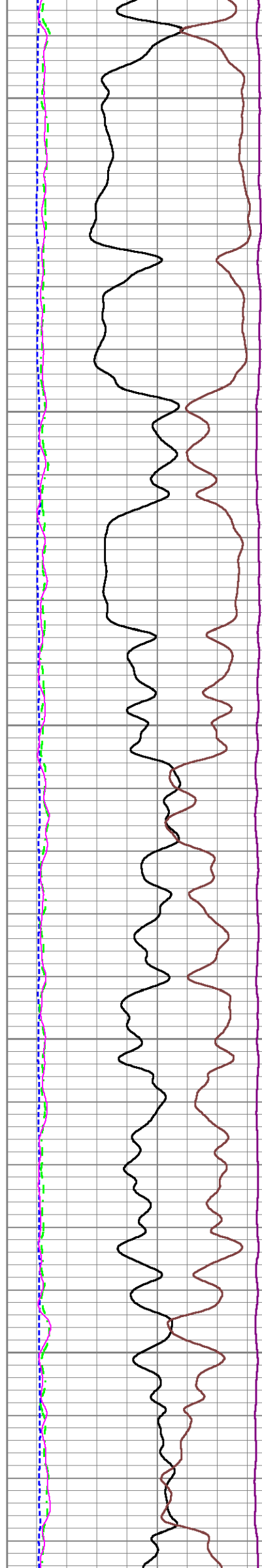
4000

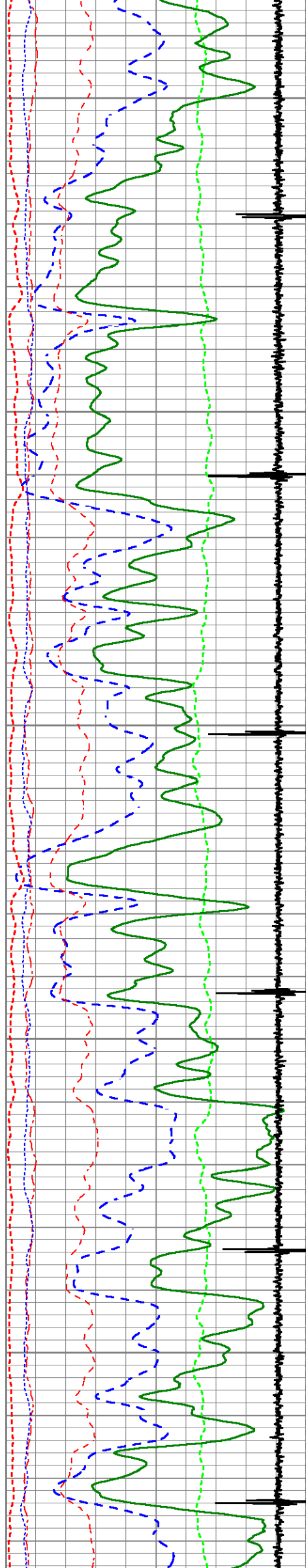
4050

4100

4150

4200





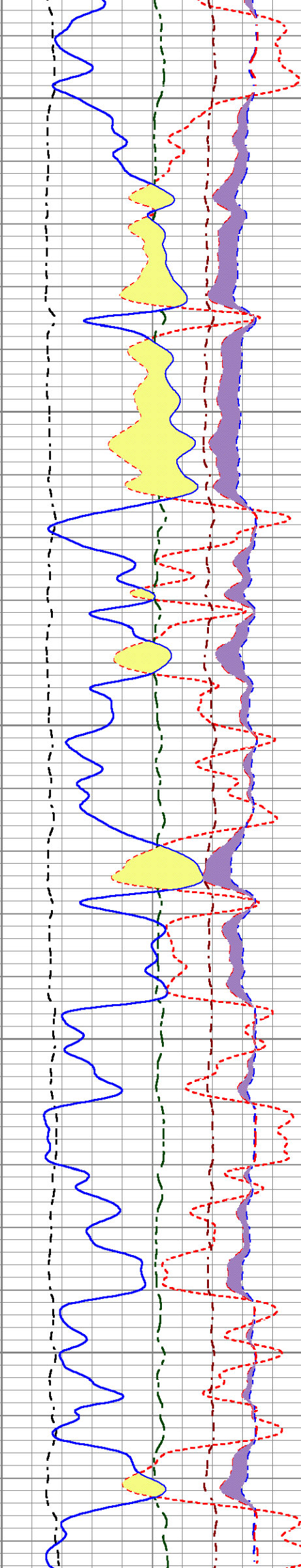
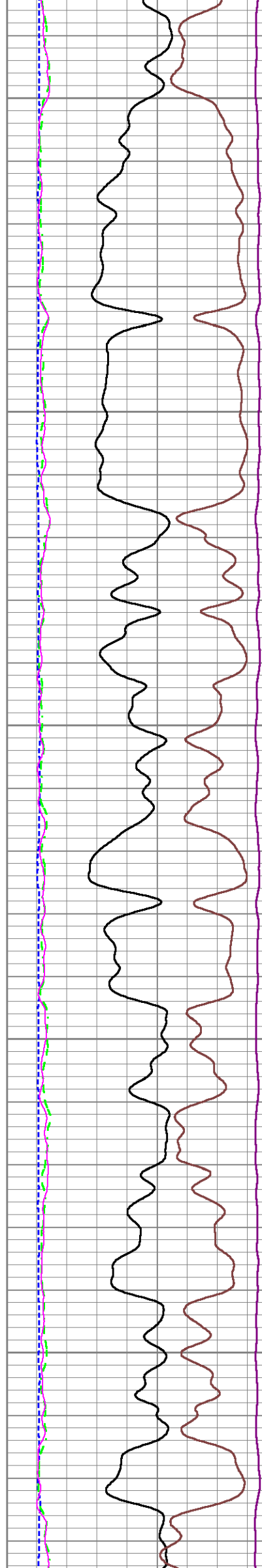
4250

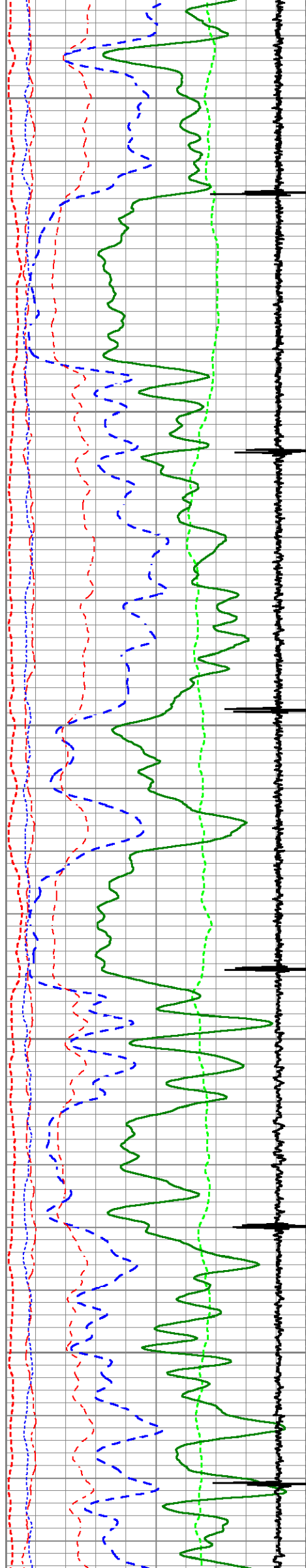
4300

4350

4400

4450





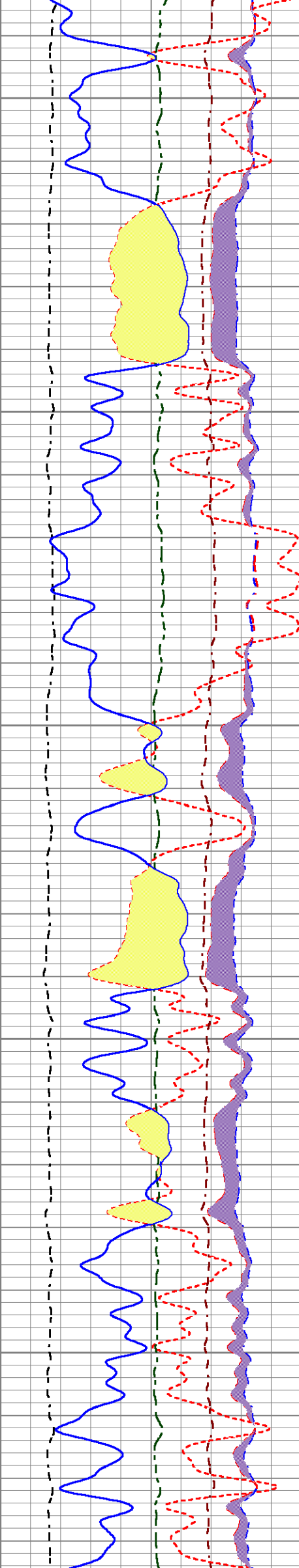
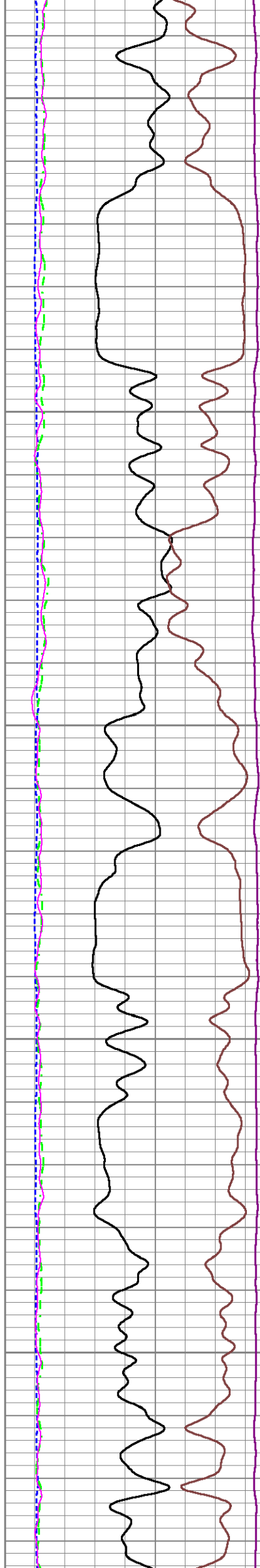
4500

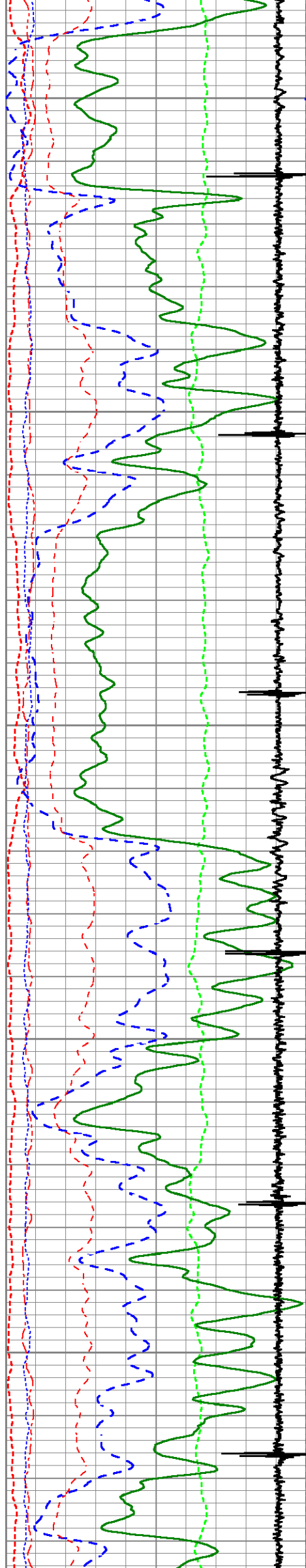
4550

4600

4650

4700





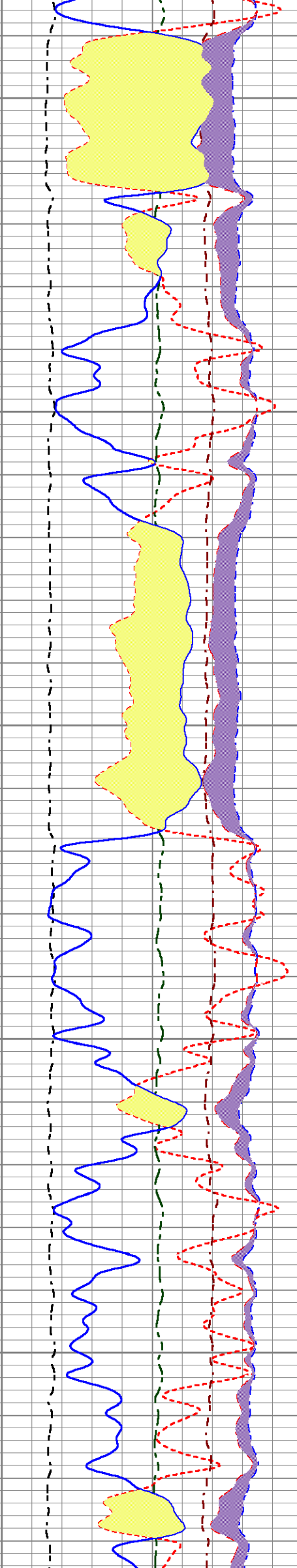
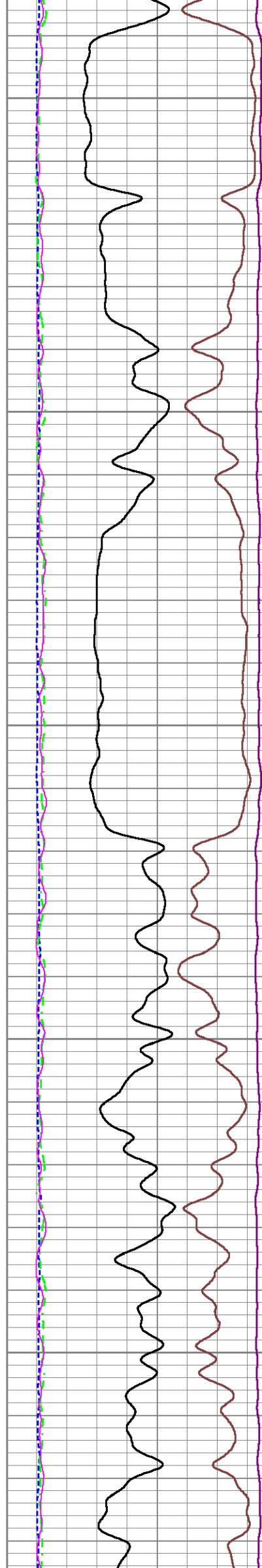
4750

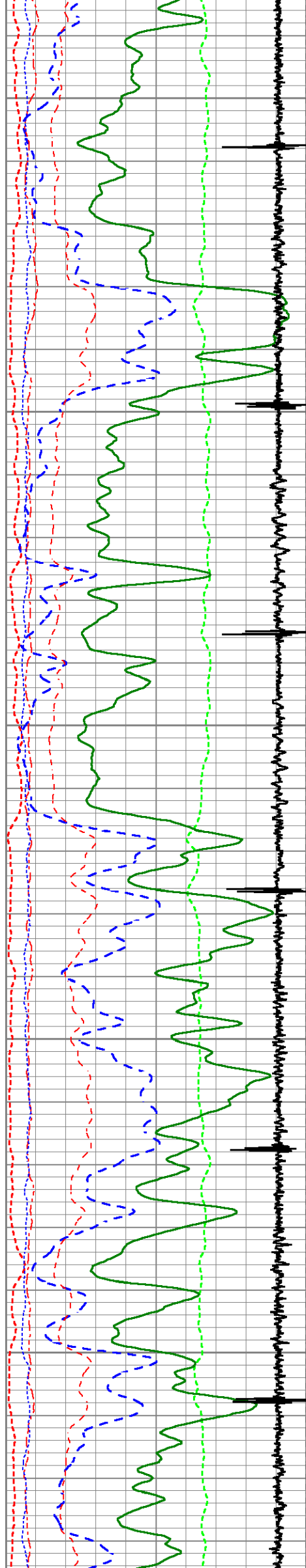
4800

4850

4900

4950





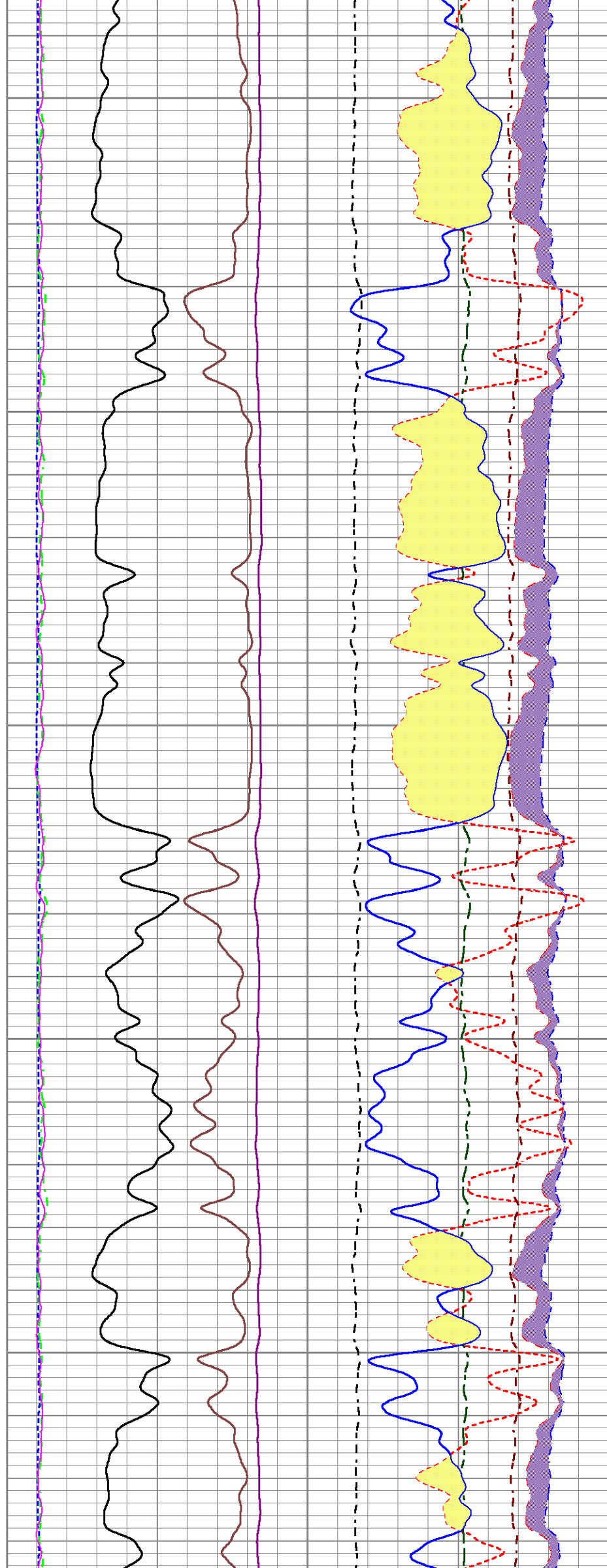
5000

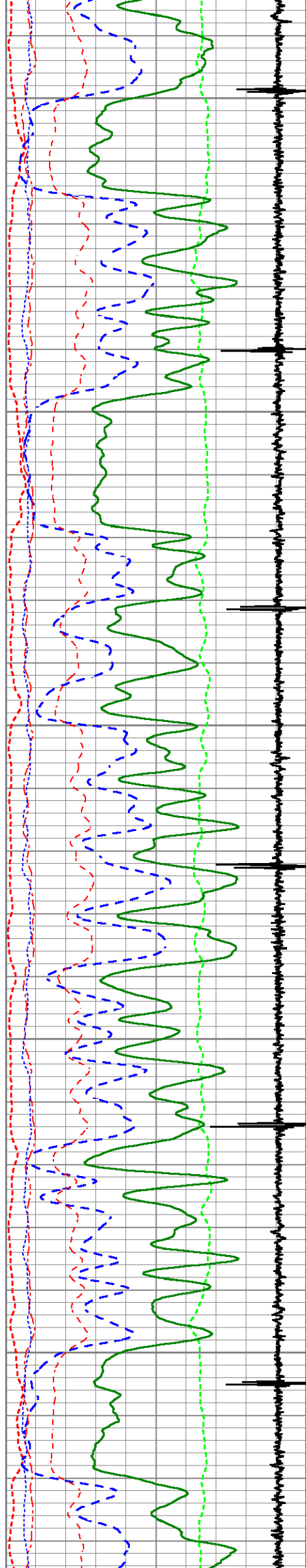
5050

5100

5150

5200





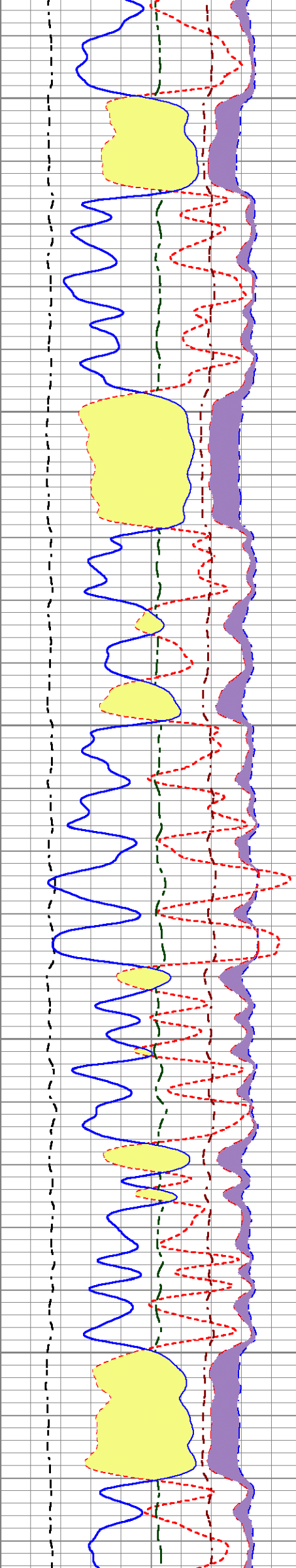
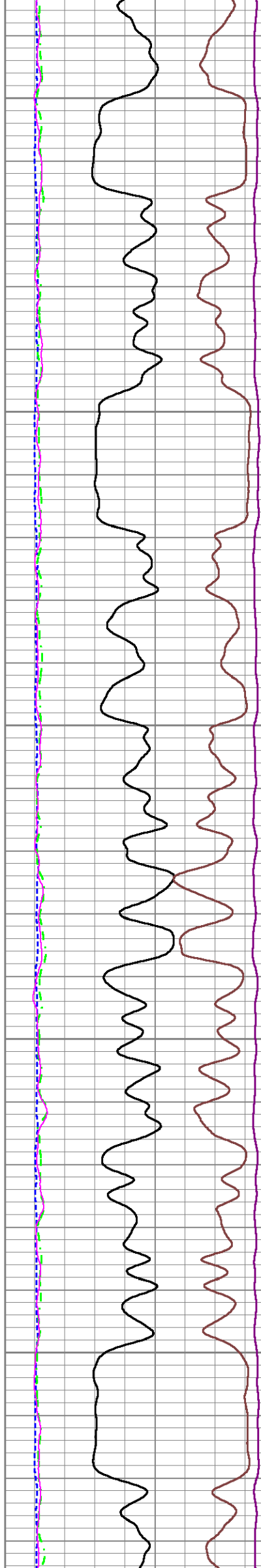
5250

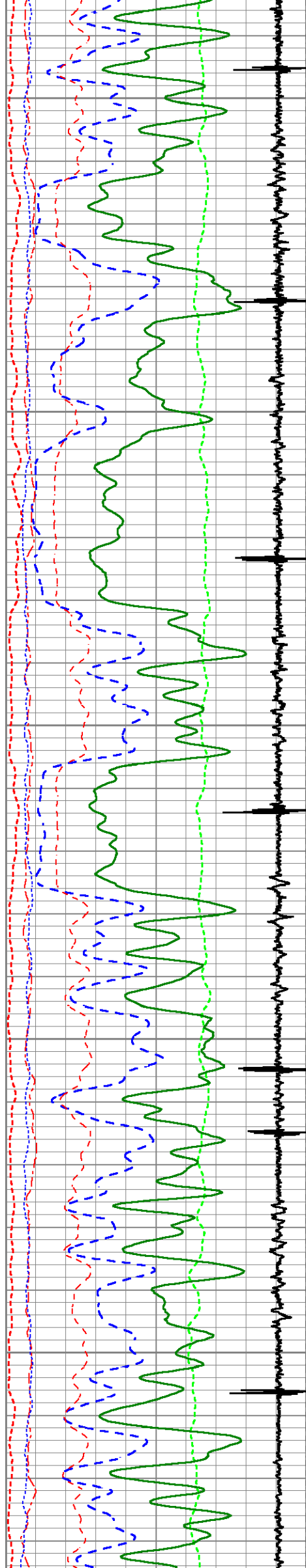
5300

5350

5400

5450





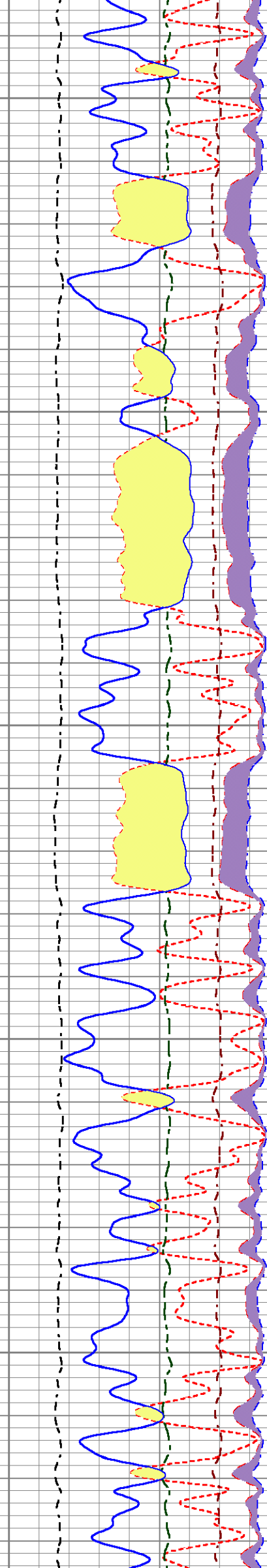
5500

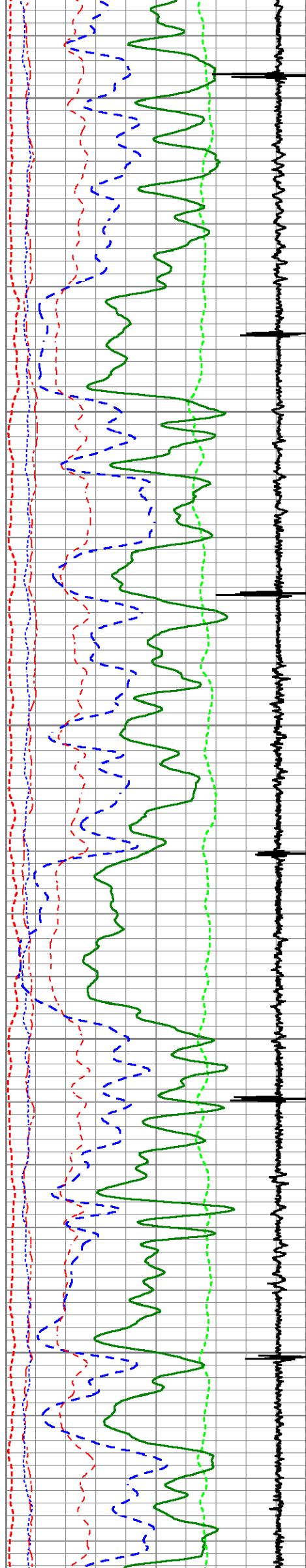
5550

5600

5650

5700





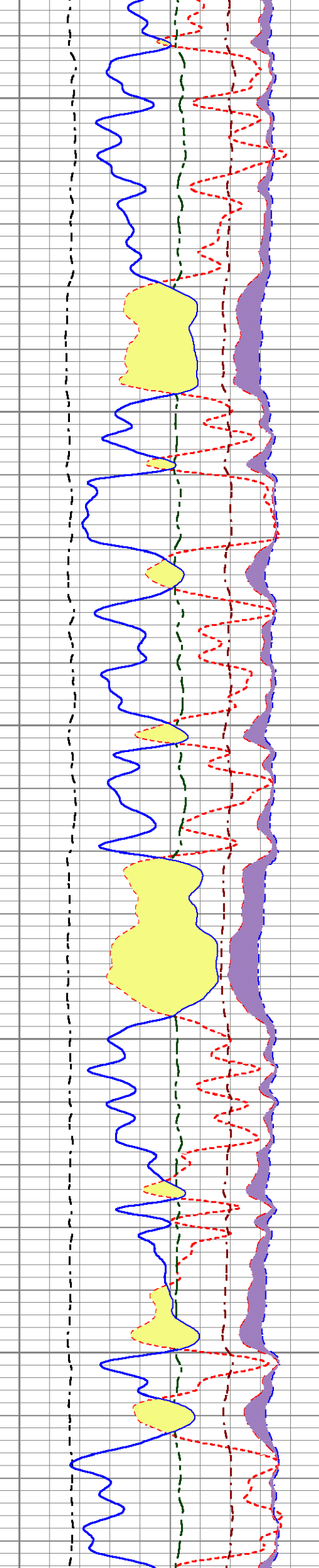
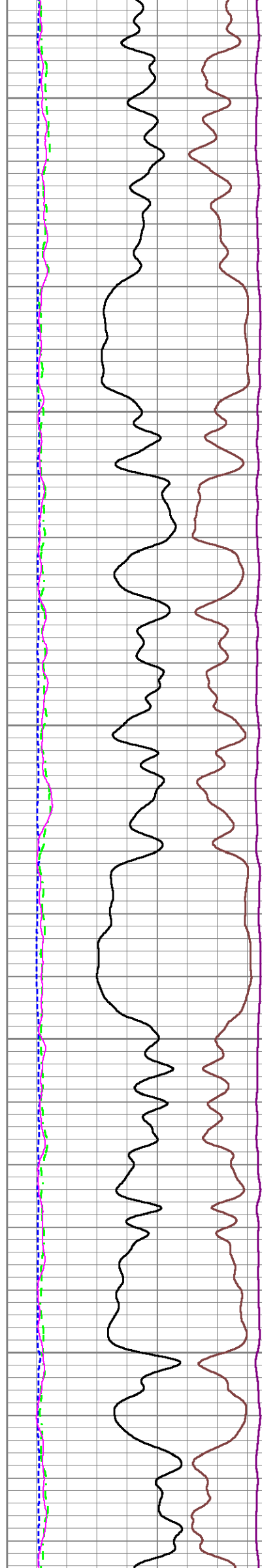
5750

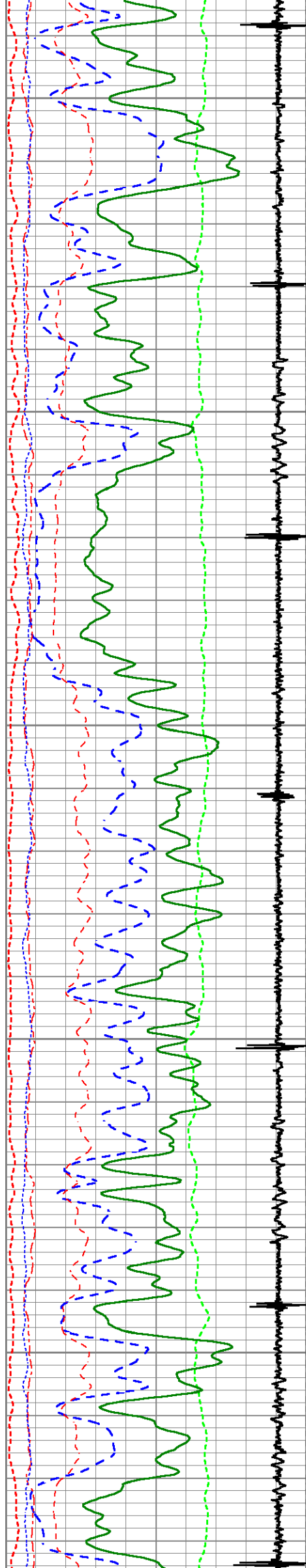
5800

5850

5900

5950





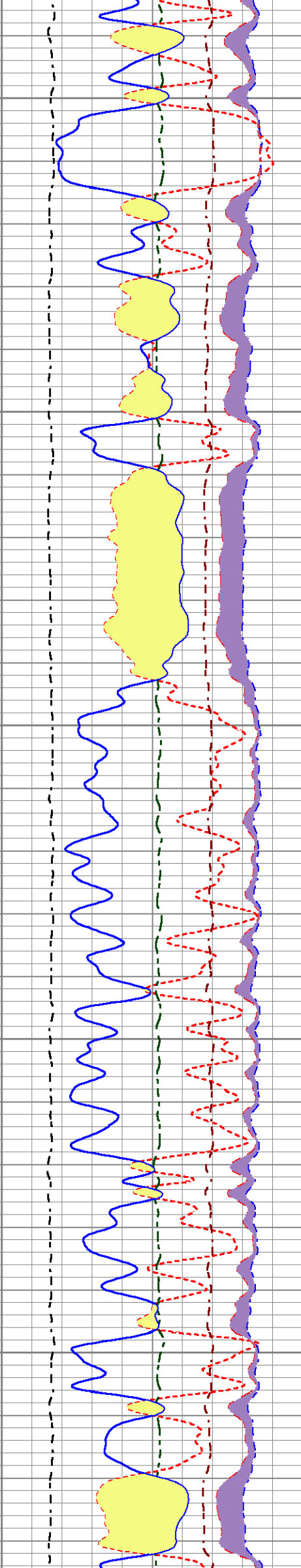
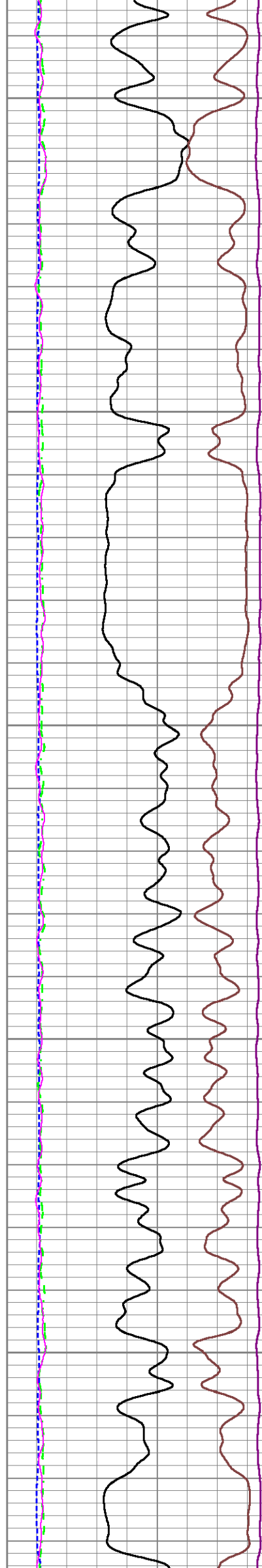
6000

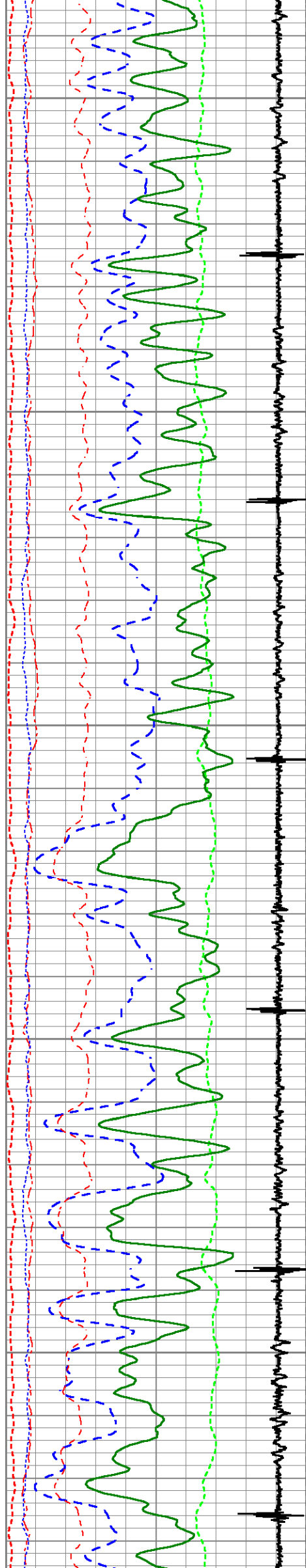
6050

6100

6150

6200





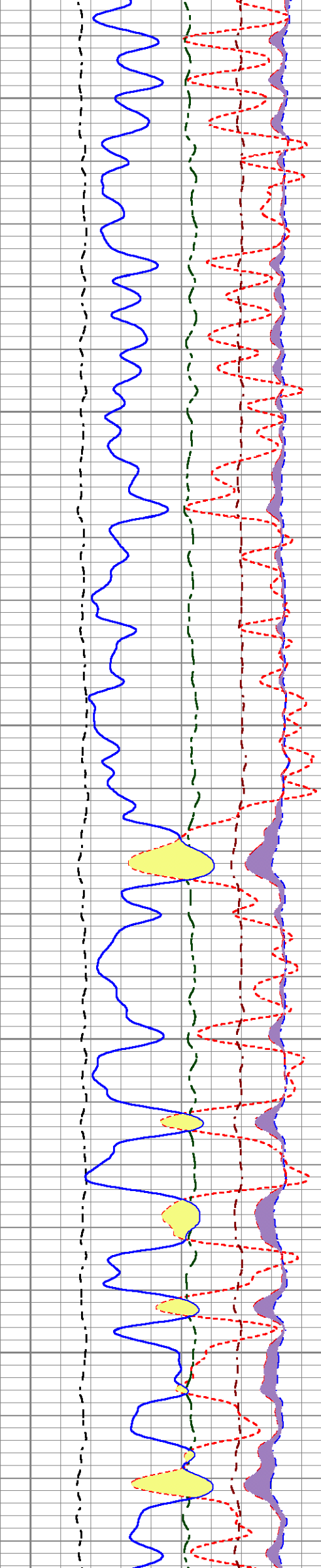
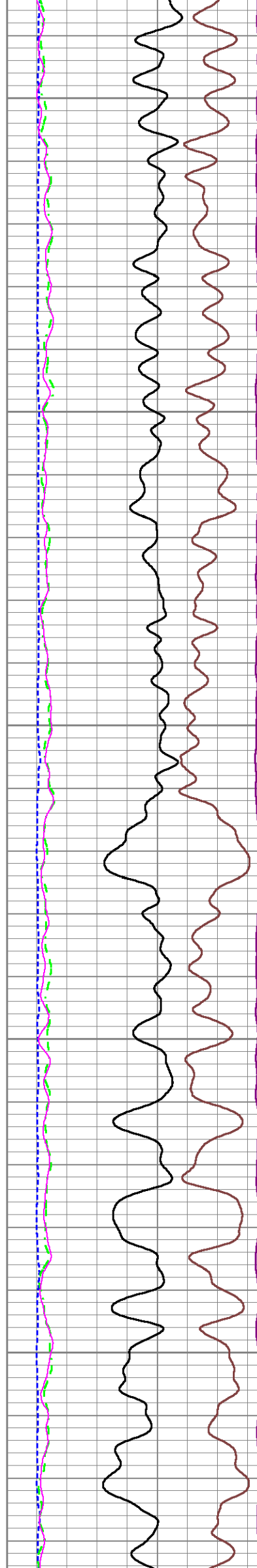
6250

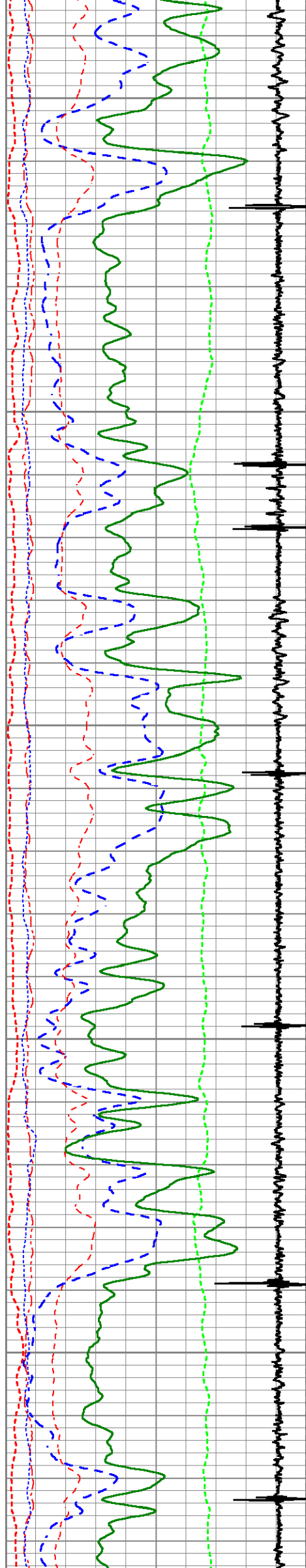
6300

6350

6400

6450





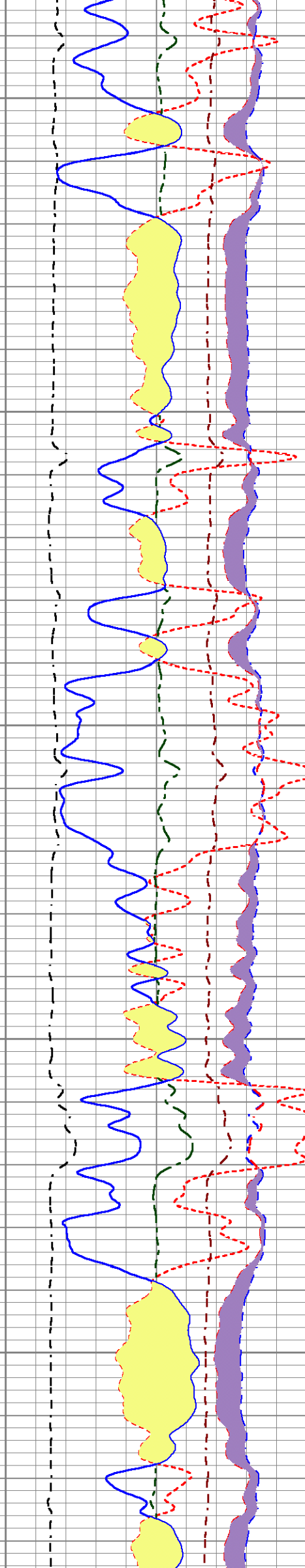
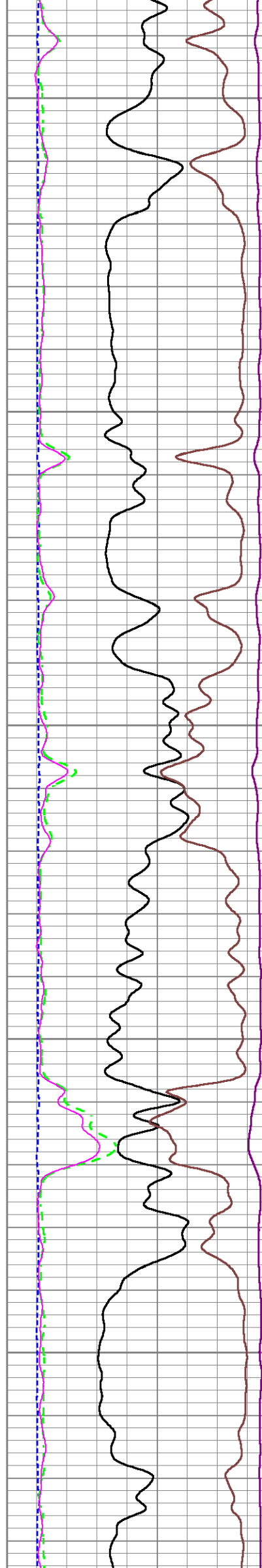
6500

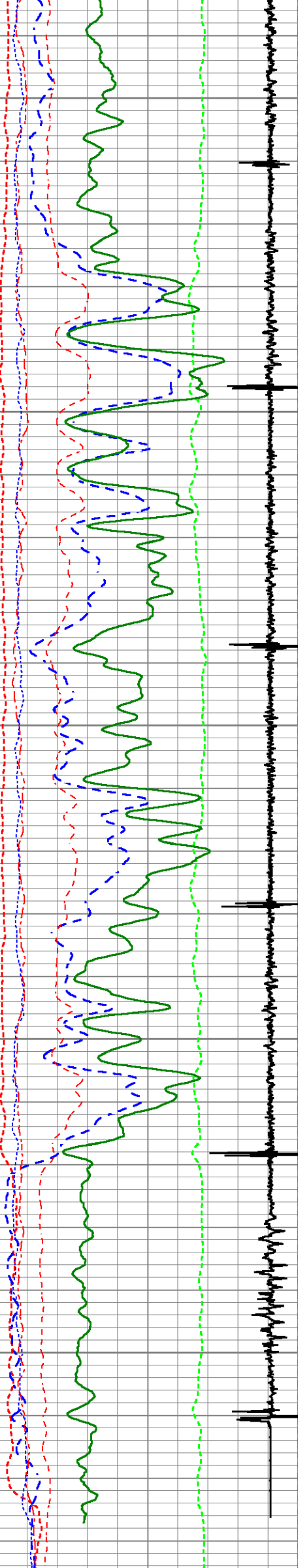
6550

6600

6650

6700





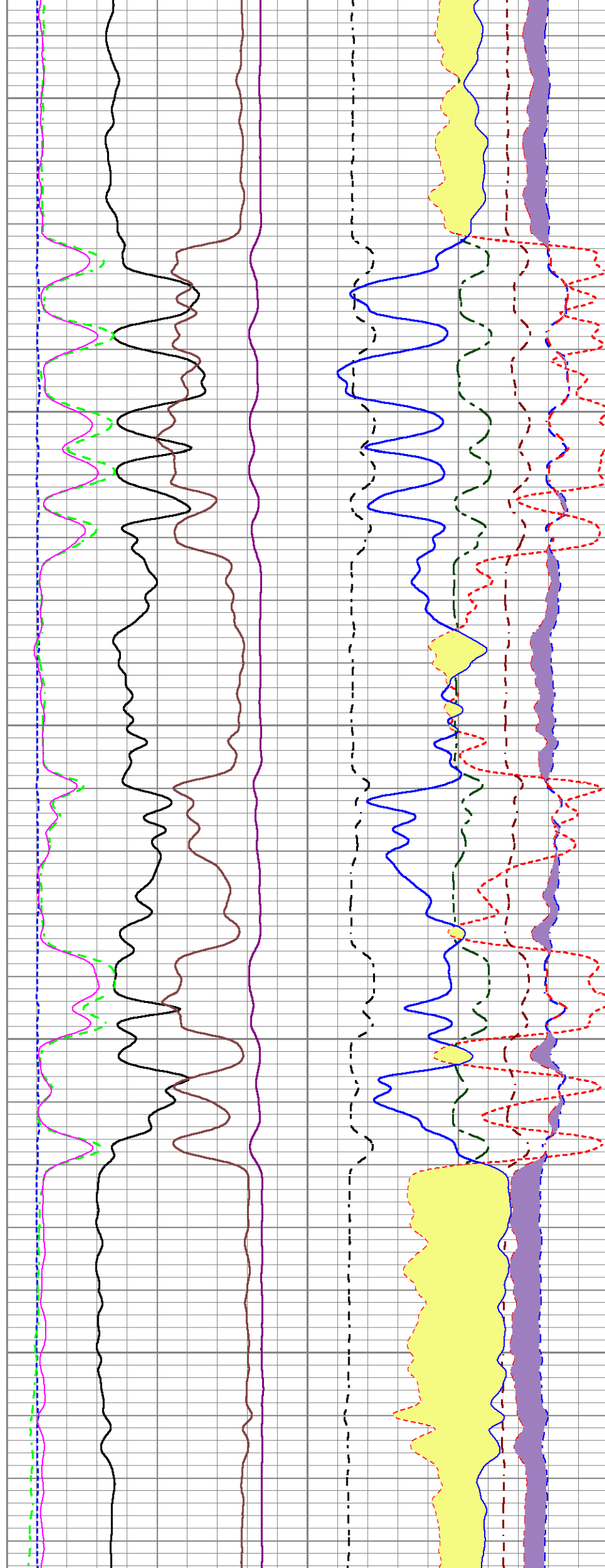
6750

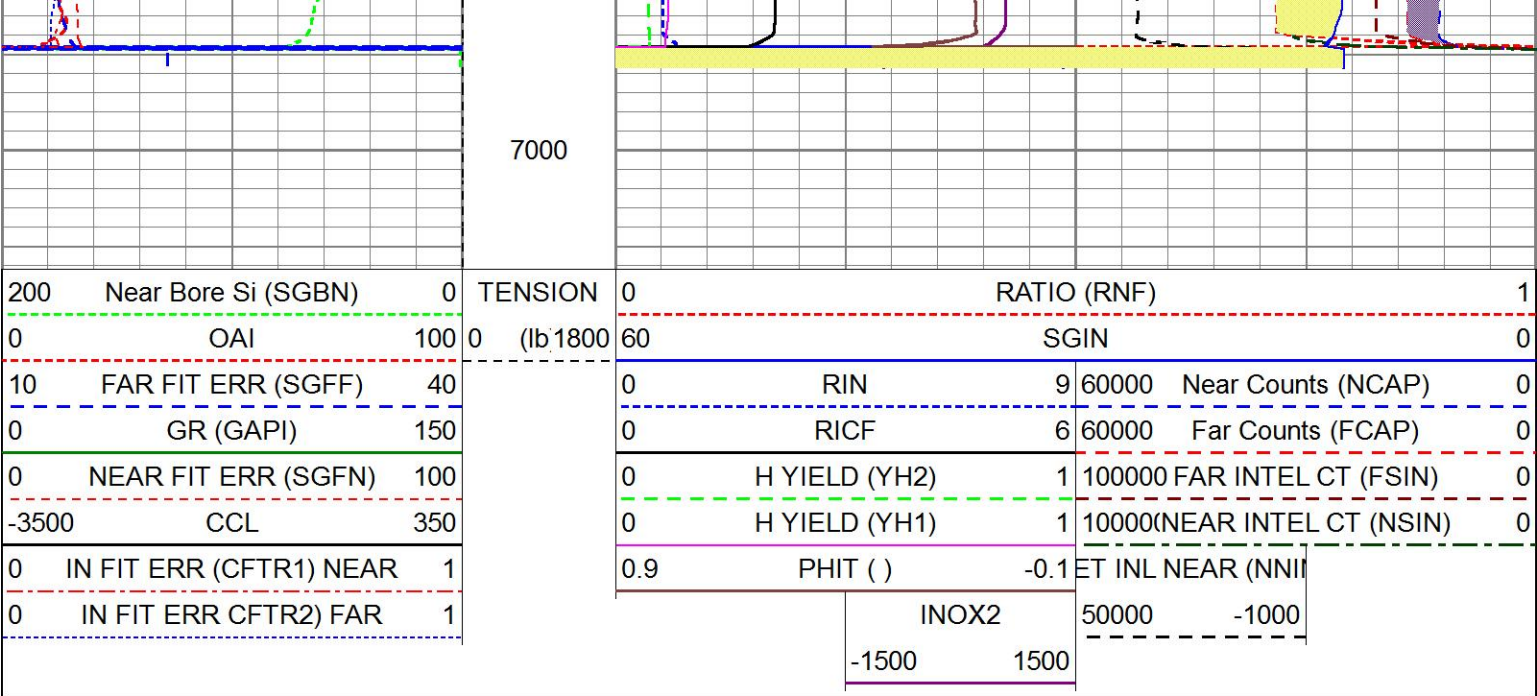
6800

6850

6900

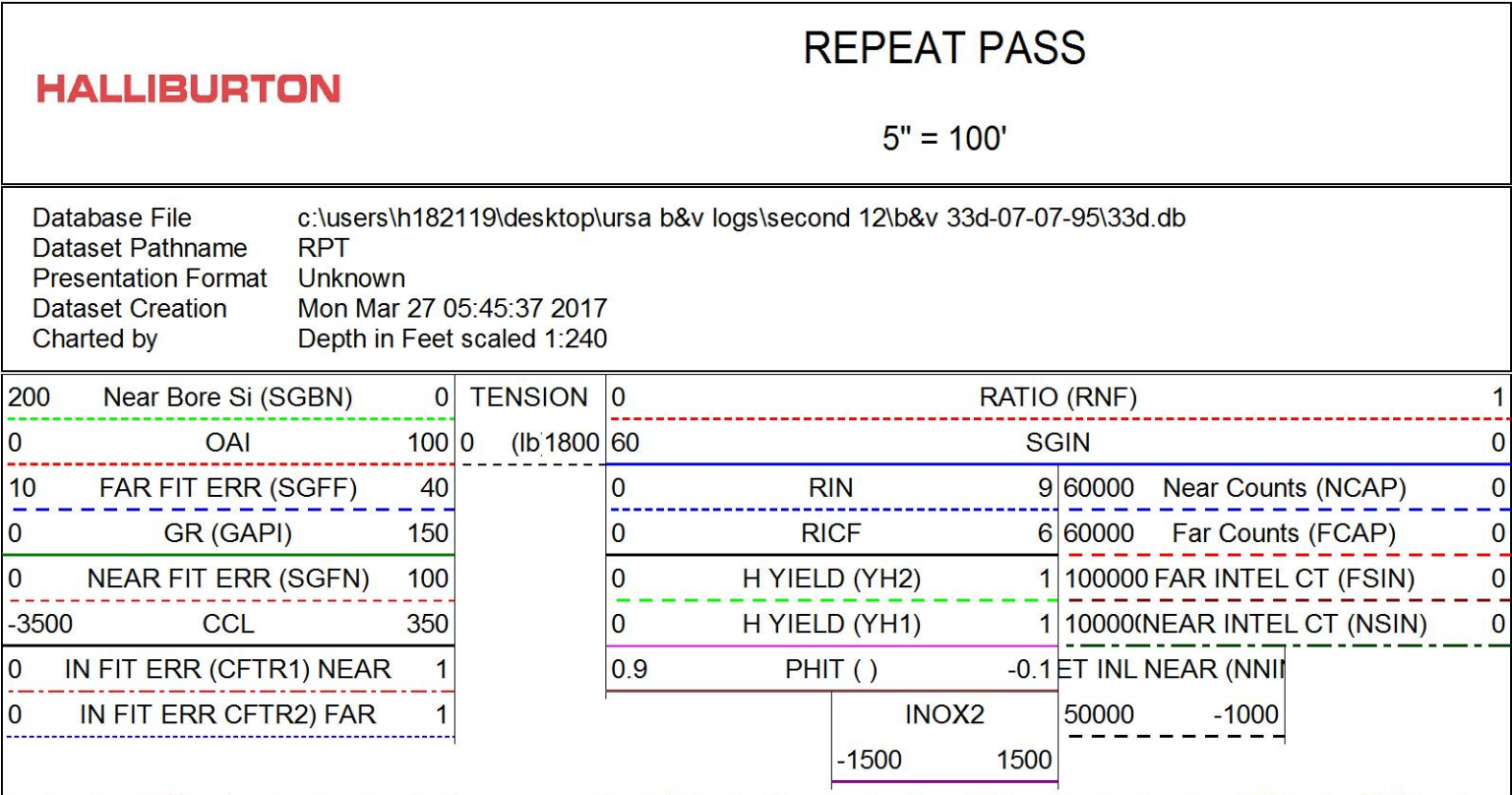
6950





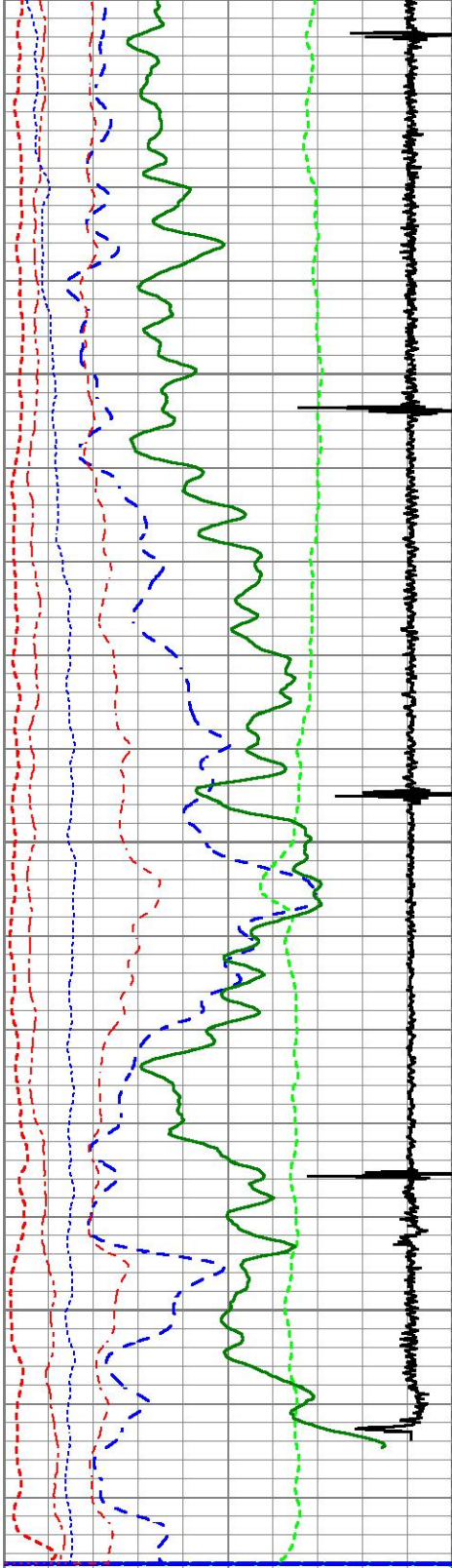
MAIN PASS

5" = 100'



REPEAT PASS

5" = 100'



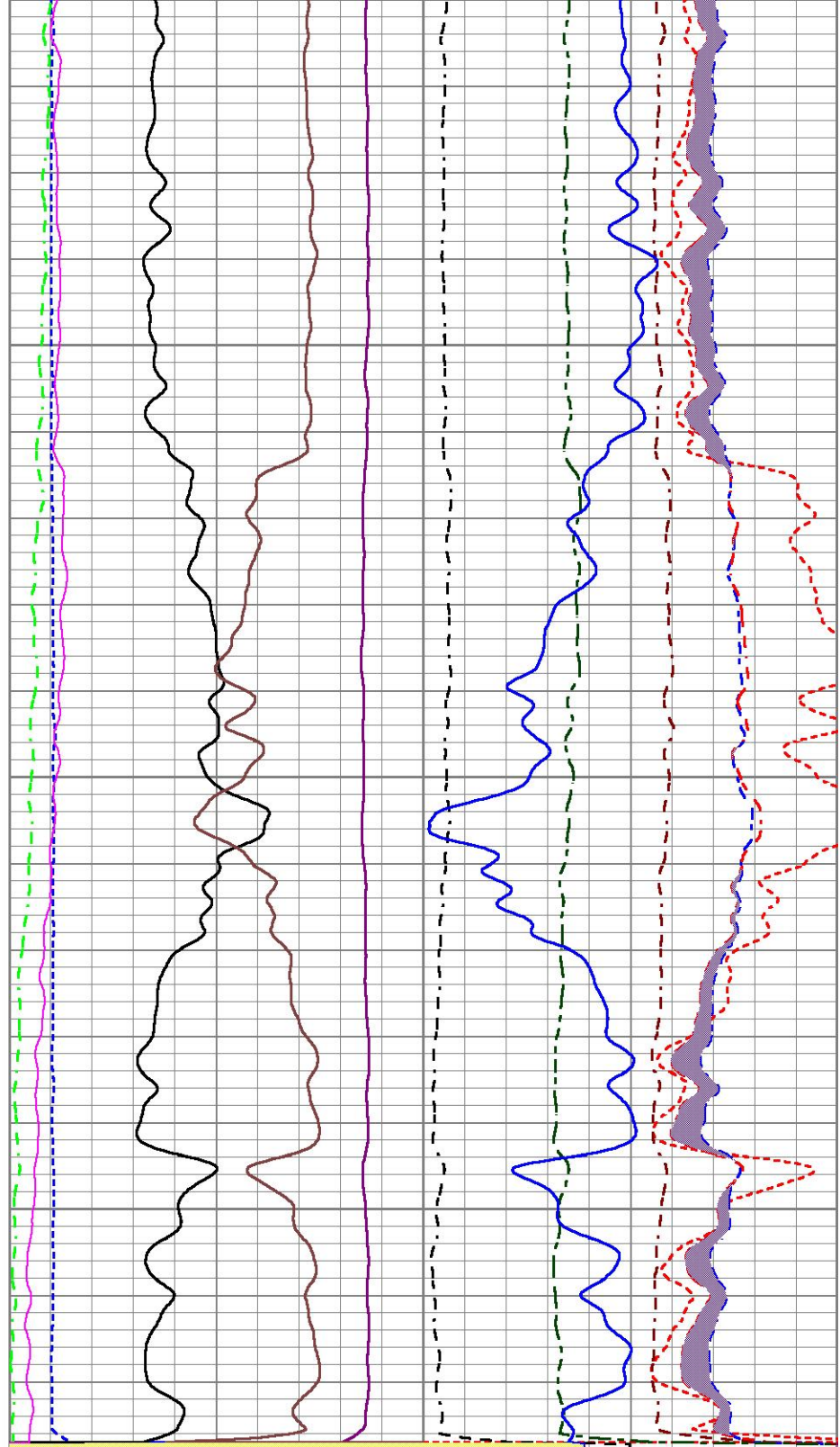
3300

3350

3400

200	Near Bore Si (SGBN)	0
0	OAI	100
10	FAR FIT ERR (SGFF)	40
0	GR (GAPI)	150
0	NEAR FIT ERR (SGFN)	100
-3500	CCL	350
0	IN FIT ERR (CFTR1) NEAR	1
0	IN FIT ERR CFTR2) FAR	1

2450
TENSION
(lb) 1800



0		RATIO (RNF)				1
60		SGIN				0
0	RIN	9	60000	Near Counts (NCAP)	0	
0	RICF	6	60000	Far Counts (FCAP)	0	
0	H YIELD (YH2)	1	100000	FAR INTEL CT (FSIN)	0	
0	H YIELD (YH1)	1	10000	(NEAR INTEL CT (NSIN)	0	
0.9	PHIT ()	-0.1	ET INL NEAR (NNII			
		INOX2	50000	-1000		
		-1500	1500			

REPEAT PASS

HALLIBURTON

5" = 100'

Top - Bottom

BHSAL1 1	BHSAL2 0	BHTEMP_Src TEMP	BITSIZE in 7.875	BORSAL kppm 150	BOTTEMP degF 200	CASED? Yes	CASEOD in 4.5
CASETHCK in 0.25	CASEWGHT lb/ft 11.6	LIRISHFTF 0	LIRISHFTN 0	LTH Sandstone	MAXAMPL mV 82	MINAMPL mV 1	MINATTN db/ft 0.8
MSGGN 1	MudWgt lb/gal 8.4	PERFS 0	POROS1 1	POROS2 0	PPT usec 0	RHOCF 0.25	SO in 0
SRFTEMP degF 50	TDEPTH ft 6500	UHSGC NONE	USERFTT usec/ft 0	ZREF MRayl 1.7			

Calibration Report

Database FileC:\Users\H182119\Desktop\URSA B&V LOGS\SECOND 12\B&V 33D-07-07-95\33d.db

Dataset PathnameMAIN

Dataset CreationMon Mar 27 06:17:20 2017

Cement Bond Log Shop Calibration Report

Serial-Model:11836468-A

Calibration Performed:Sun Mar 26 19:34:08 2017

Free Pipe Calibration

TT	Measured	Units
Amplitude	245.6	usec
Log Base Line	408.0	mV
	19.3	mV

Calibration References and Gain

Name	Value	Units
Pipe O.D.	4.500	in
Pipe Weight	11.6	lb/ft
Pipe Ref. Amp.	82.0	mV
Amp. Gain	0.208	

Gamma Ray Calibration Report

Type / Serial:002 / 12159411

SHOP CALIBRATION

Mon Feb 20 15:54:04 2017

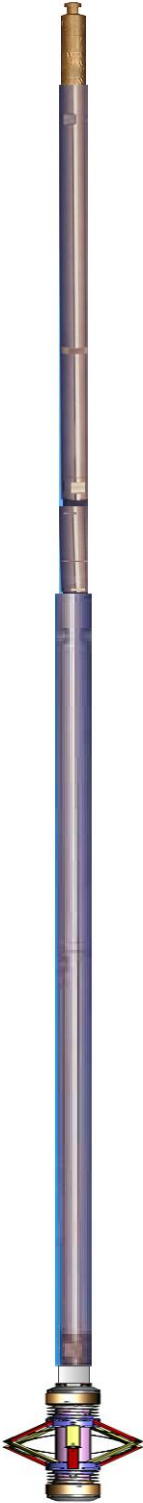
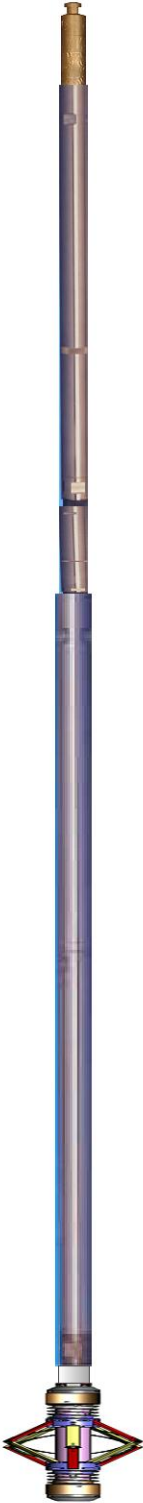
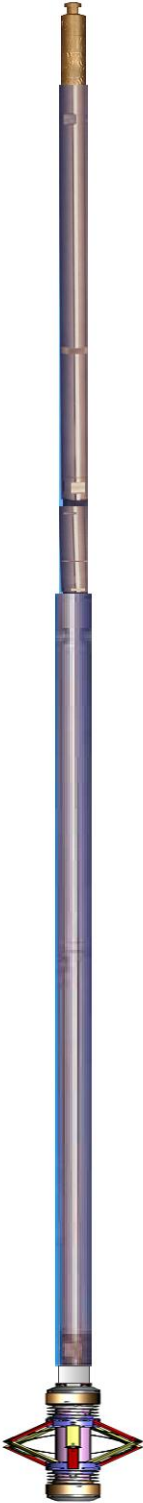
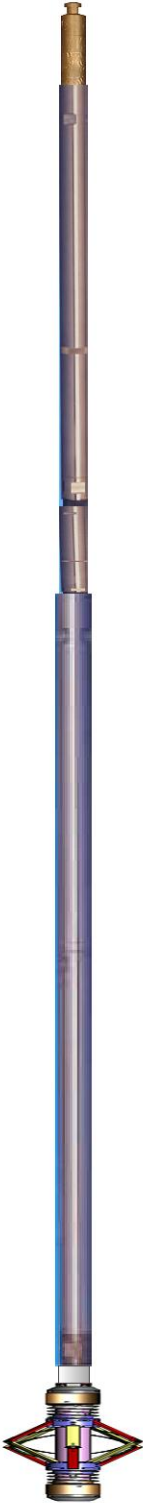
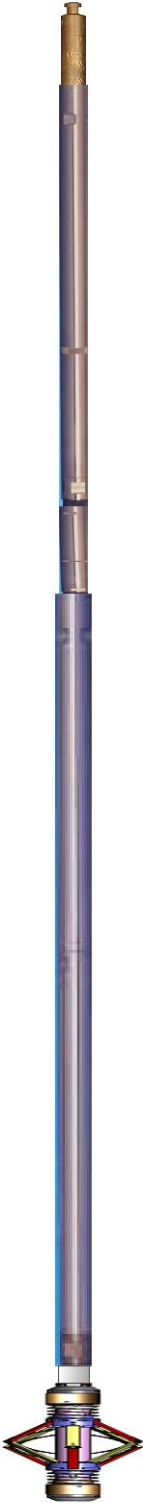
	Counts/Sec.	Gain	Offset	Jig	Units
Background	27.6				cps
Calibrator	317.4	1.4943			cps
					GAPI/cps

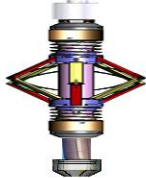
PRIMARY VERIFICATION

Background	0.0				cps
Calibrator	0.0				cps
Difference				0.0	GAPI

BEFORE SURVEY VERIFICATION

Background	0.0		cps
Calibrator	0.0		cps
Difference		0.0	GAPI
AFTER SURVEY VERIFICATION			
Background	0.0		cps
Calibrator	0.0		cps
Difference		0.0	GAPI

Sensor	Offset (ft)	Schematic	Description	Length (ft)	O.D. (in)	Weight (lb)
CCL	35.86		STNDCH-STND_CH 1.4375 IN CABLE HEAD	1.50	1.44	1.00
			TTTCU-002 (12159411) Through Tubing Telemetry Cartridge - Ultrawire	7.65	1.69	37.00
			XHU-003 (000001) Crossover Halliburton 1553 to Ultrawire	1.58	1.69	7.00
RmtTFGT	22.95		RMTI-A (12376244) Halliburton RMTI Tool	14.00	2.13	77.00
RmtTNGT	22.45					
RmtFP5V	14.70		X-OVER-SondexxGo	0.31	1.69	1.00
RmtNFwvMcsPI	14.70		Sondex Box x Go Pin Cross Over			
RmtCommFWa	14.70		CENT-CASTM-CENT CAST M INLINE CENTRALIZER	2.16	3.13	25.00
Temp	9.57		HCBLM-A (11836468) Halliburton HCBLM Tool	9.38	2.75	116.00
TT3FT	7.32					
AMP3FT	7.32					
WVF5FT	6.36		CENT-CASTM-CENT	2.16	3.13	25.00

WVF3FT	2.84		CAST M INLINE CENTRALIZER	2.75	3.15	25.00
			AUH-001 (11072111) Adaptor Ultrawire/Halliburton	0.38	1.69	3.00
LLMTEN	0.00		BUL-001 (000001) Bullnose	0.30	1.69	1.50
Dataset: 33d.db: field/well/run1/MAIN Total length: 39.43 ft Total weight: 293.50 lb O.D.: 3.13 in						

Company	URSA OPERATING COMPANY				
Well	B&V 33D-07-07-95				
Field	WILDCAT				
County	GARFIELD		State	CO	
HALLIBURTON	RESERVOIR MONITORING TOOL - ELITE				