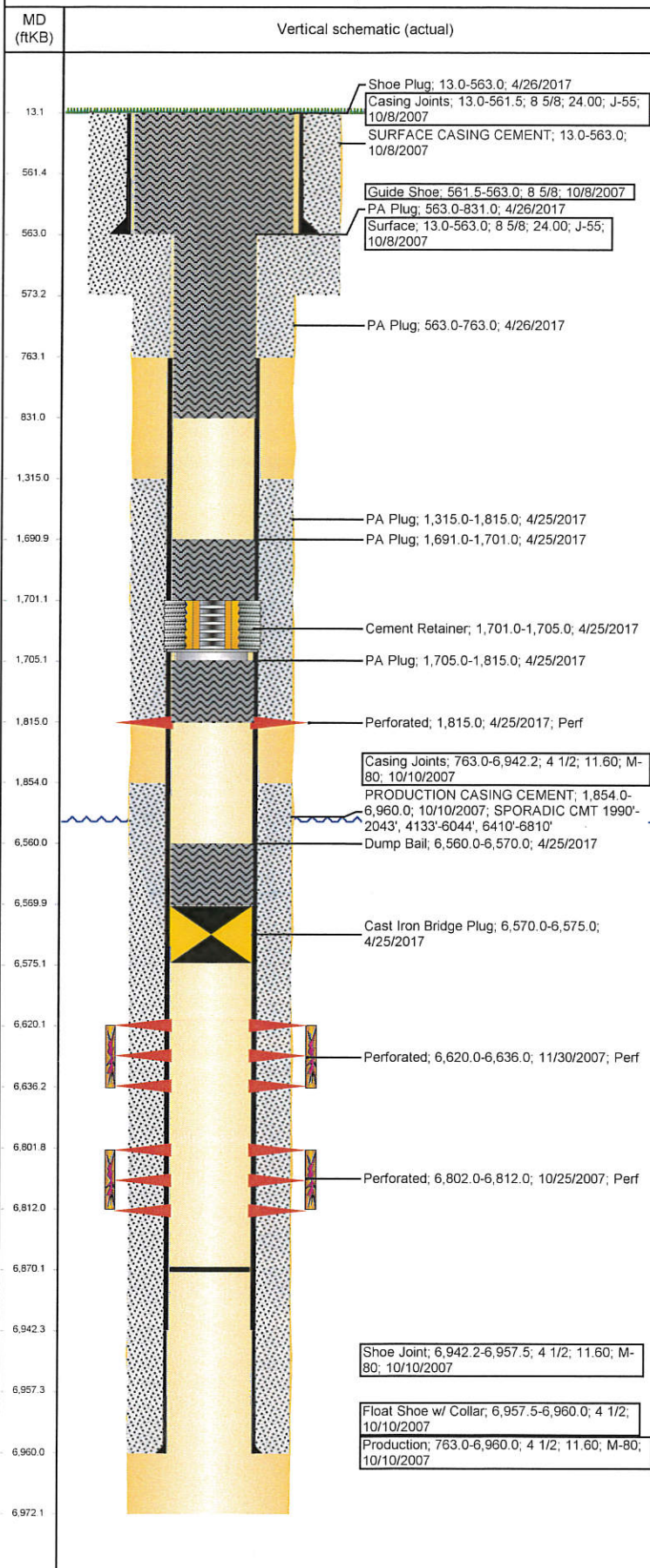


Well Name: WELLS RANCH USX AA33-15

VERTICAL - ORIGINAL HOLE, 5/15/2017 11:43:46 AM



Well Header

API 05-123-26384	Business Unit DJ BASIN	District 15	Well Config VERTICAL
Original KB Elevation (ft) 4,788	KB - GL / MSL (ftKB) 13.00	Spud Date 10/7/2007	P & A Date 4/25/2017
Comment			

Directions To Well

67 & 68, E 2/10, S 2.8MI TO SS OF COW CAMP, SW 1/2, W 3/10, N 2/10, SW INTO

Congressional Location

Quarter 3 SW	Quarter 4 SE	Section 33	Township 6	Twnshp N/S Dir N	Range 63	Range E/W Dir W
-----------------	-----------------	---------------	---------------	---------------------	-------------	--------------------

Bottom Hole Location

North-South Distance (ft)	From N or S Line	East-West Distance (ft)	From E or W Line
---------------------------	------------------	-------------------------	------------------

Plug Back Total Depths

Date	Depth (ftKB)	Method	Com
10/10/2007	6,942.0	CASING TALLY	FLOAT SHOE W/COLLAR @ 6942
10/24/2007	6,921.0	CASED HOLE LOG	DEPTH LOGGER ON CBL
2/7/2008	6,870.0	TAG	TAGGED FILL @6870'

Wellbore Sections

Section Des	Size (in)	Act Top, MD (ftKB)	Act Btm, MD (ftKB)
SURFACE	12 1/4	13	573
PRODUCTION	7 7/8	573	6,972

Zone Statuses

Zone Name	Status Date	Status	Fluid Type	Job	Prod Method
CODELL	12/3/2007	PR	Water	DRILLING/CO...	Flowing
CODELL	1/29/2010	PR		PLUG AND AB...	
CODELL	4/25/2017	P&A		DRILLING/CO...	
NIOBRARA	12/3/2007	PR	Water	DRILLING/CO...	Flowing
NIOBRARA	1/29/2010	PR		PLUG AND AB...	
NIOBRARA	12/31/2013	PR		PLUG AND AB...	
NIOBRARA	4/25/2017	P&A			

Casing Strings

Surface, 563.0ftKB

Casing Description	Run Date	OD (in)	W/Len (l...)	Grade	Top, MD (ft...)	MD (ftKB)
Surface	10/8/2007	8 5/8	24.00	J-55	13.0	563.0

Production, 6,960.0ftKB

Casing Description	Run Date	OD (in)	W/Len (l...)	Grade	Top, MD (ft...)	MD (ftKB)
Production	10/10/2007	4 1/2	11.60	M-80	13.0	6,960.0

Cement

Description	Top Depth (ftKB)	Bottom Depth (ftKB)
SURFACE CASING CEMENT	13.0	563.0
PRODUCTION CASING CEMENT	1,854.0	6,960.0
Dump Bail	6,560.0	6,570.0
PA Plug	1,315.0	1,815.0
PA Plug	1,705.0	1,815.0
PA Plug	1,691.0	1,701.0
PA Plug	563.0	831.0
PA Plug	563.0	763.0
Shoe Plug	13.0	563.0

Tubing Strings

Tubing Description	Run Date	String...	ID (in)	Wt (lb/ft)	Grade	Len (ft)	Set De...
Tubing - Production	2/8/2008	2 3/8		4.70	J-55	6,775.24	

Other In Hole

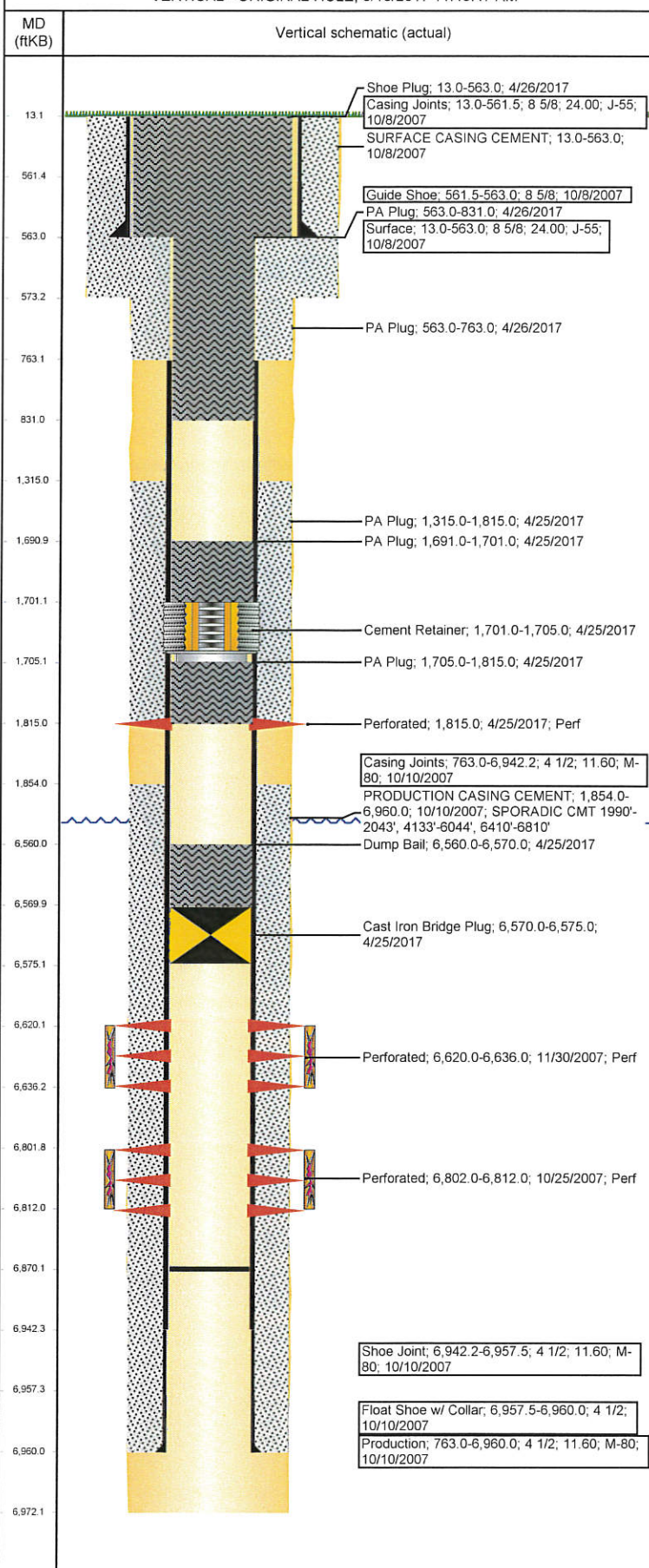
Run Date	Des	OD (in)	Top (ftKB)	Btm (ftKB)
4/25/2017	Cast Iron Bridge Plug	4	6,570.0	6,575.0
4/25/2017	Cement Retainer	4	1,701.0	1,705.0

Logs

Date	Type	Top, MD (ftKB)	Btm, MD (ftKB)
10/10/2007	COMPENSATED DENSITY	2,750.0	6,942.0

Well Name: WELLS RANCH USX AA33-15

VERTICAL - ORIGINAL HOLE, 5/15/2017 11:43:47 AM



Logs

Date	Type	Top, MD (ftKB)	Btm, MD (ftKB)
10/10/2007	INDUCTION	13.0	6,962.0
10/24/2007	CBL/CCL/GR	1,730.0	6,914.0
10/24/2007	GYRO	12.0	6,700.0

Perforation Data

Linked Zone		Bnch/St g	Sum of Entered Shot Total	Top (ftKB)	Btm (ftKB)	Date
CODELL, ORIGINAL HOLE		A	6	1,815.00	1,815.00	4/25/2017
NIOBRARA, ORIGINAL HOLE			64	6,620.00	6,636.00	11/30/2007
CODELL, ORIGINAL HOLE			40	6,802.00	6,812.00	10/25/2007
Total (Sum)			110			

Stimulation Intervals

Start Date 11/30/2007	Primary Job Type DRILLING/COMPLETION - ORIGINAL	
Technical Result	Tech Result Details	Tech Result Note
Comment		
Start Date 11/30/2007	Primary Job Type DRILLING/COMPLETION - ORIGINAL	
Technical Result	Tech Result Details	Tech Result Note
Comment		