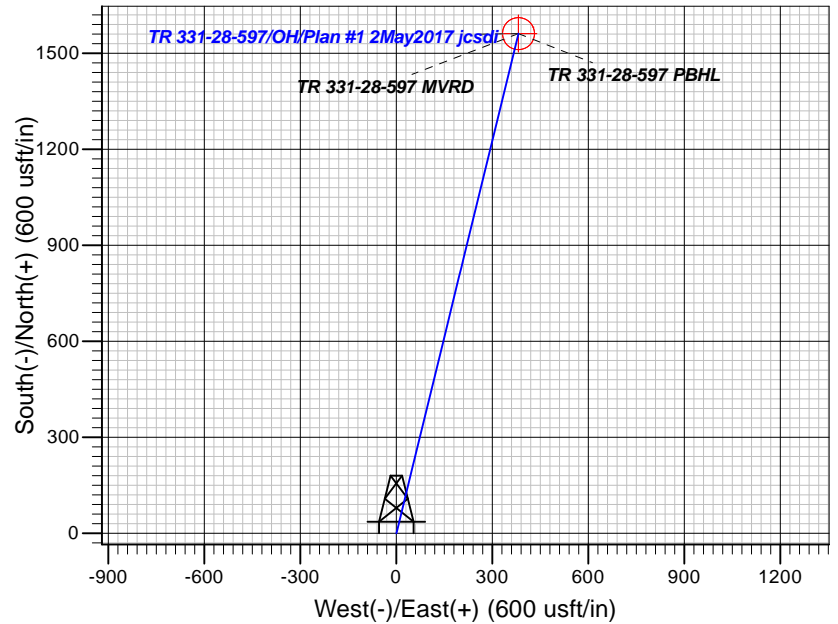
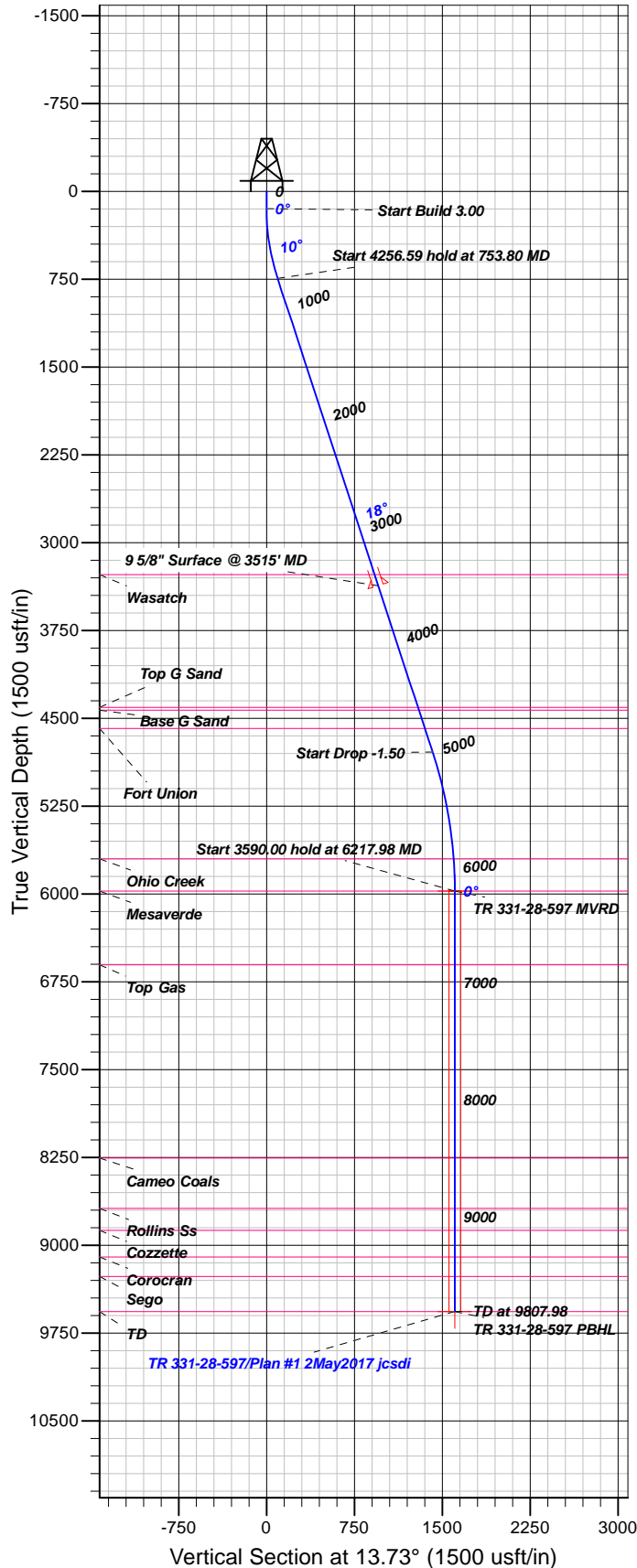
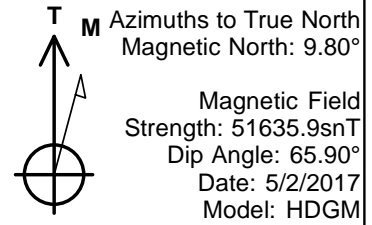


Well Details: TR 331-28-597

+N/-S	+E/-W	Northing	Easting	Latitude	Longitude	Slot
0.00	0.00	1650746.00	2216040.80	39.5871319	-108.2820587	B 11



FORMATION TOP DETAILS

TVDPath	MDPath	Formation
3274.00	3415.94	Wasatch
4408.00	4609.08	Top G Sand
4432.00	4634.33	Base G Sand
4587.00	4797.41	Fort Union
5700.00	5940.74	Ohio Creek
5977.00	6217.98	Mesaverde
6607.00	6847.98	Top Gas
8256.00	8496.98	Cameo Coals
8686.00	8926.98	Rollins Ss
8873.00	9113.98	Cozzette
9101.00	9341.98	Corocran
9267.00	9507.98	Sego

Plan: Plan #1 2May2017 jcsdi

10:29, May 04 2017  
 Created By: Janie Collins

PROJECT DETAILS: Garfield County, CO NAD83

Geodetic System: US State Plane 1983  
 Datum: North American Datum 1983  
 Ellipsoid: GRS 1980  
 Zone: Colorado Central Zone

System Datum: Mean Sea Level

CASING DETAILS

TVD	MD	Name	Size
3368.15	3515.94	9 5/8" Surface @ 3515' MD	9.62

SECTION DETAILS

Sec	MD	Inc	Azi	TVD	+N/-S	+E/-W	Dleg	TFace	Vsect	Target
1	0.00	0.00	0.00	0.00	0.00	0.00	0.00	0.00	0.00	
2	150.00	0.00	0.00	150.00	0.00	0.00	0.00	0.00	0.00	
3	753.80	18.11	13.73	743.79	91.95	22.47	3.00	13.73	94.65	
4	5010.38	18.11	13.73	4789.42	1377.52	336.63	0.00	0.001418.06		
5	6217.98	0.00	0.00	5977.00	1561.42	381.57	1.50	180.001607.36		TR 331-28-597 MVRD
6	9807.98	0.00	0.00	9567.00	1561.42	381.57	0.00	0.001607.36		TR 331-28-597 PBHL

DESIGN TARGET DETAILS

Name	TVD	+N/-S	+E/-W	Northing	Easting	Latitude	Longitude	Shape
TR 331-28-597 MVRD5977.00	1561.42		381.57	1652295.00	2216470.00	39.5914185	-108.2807048	Circle (Radius: 50.00)
- plan hits target center								
TR 331-28-597 PBHL 9567.00	1561.42		381.57	1652295.00	2216470.00	39.5914185	-108.2807048	Point
- plan hits target center								



## **TEP Rocky Mountain LLC**

**Garfield County, CO NAD83**

**TR 32-28-597 Pad**

**TR 331-28-597 - Slot B11**

**OH**

**Plan: Plan #1 2May2017 jcsdi**

## **Standard Planning Report**

**04 May, 2017**



<b>Database:</b>	Grand Junction District	<b>Local Co-ordinate Reference:</b>	Well TR 331-28-597 - Slot B11
<b>Company:</b>	TEP Rocky Mountain LLC	<b>TVD Reference:</b>	GL 8481.4' & RKB 24' @ 8505.40usft
<b>Project:</b>	Garfield County, CO NAD83	<b>MD Reference:</b>	GL 8481.4' & RKB 24' @ 8505.40usft
<b>Site:</b>	TR 32-28-597 Pad	<b>North Reference:</b>	True
<b>Well:</b>	TR 331-28-597	<b>Survey Calculation Method:</b>	Minimum Curvature
<b>Wellbore:</b>	OH		
<b>Design:</b>	Plan #1 2May2017 jcsdi		

<b>Project</b>	Garfield County, CO NAD83		
<b>Map System:</b>	US State Plane 1983	<b>System Datum:</b>	Mean Sea Level
<b>Geo Datum:</b>	North American Datum 1983		
<b>Map Zone:</b>	Colorado Central Zone		

<b>Site</b>	TR 32-28-597 Pad			
<b>Site Position:</b>		<b>Northing:</b>	1,650,686.80 usft	<b>Latitude:</b> 39.5869706
<b>From:</b> Map		<b>Easting:</b>	2,216,054.60 usft	<b>Longitude:</b> -108.2820034
<b>Position Uncertainty:</b>	0.00 usft	<b>Slot Radius:</b>	13.20 in	<b>Grid Convergence:</b> -1.75 °

<b>Well</b>	TR 331-28-597 - Slot B11			
<b>Well Position</b>	<b>+N/-S</b>	58.75 usft	<b>Northing:</b>	1,650,746.00 usft
	<b>+E/-W</b>	-15.61 usft	<b>Easting:</b>	2,216,040.80 usft
<b>Position Uncertainty</b>	0.00 usft		<b>Wellhead Elevation:</b>	0.00 usft
			<b>Ground Level:</b>	8,481.40 usft

<b>Wellbore</b>	OH				
<b>Magnetics</b>	<b>Model Name</b>	<b>Sample Date</b>	<b>Declination (°)</b>	<b>Dip Angle (°)</b>	<b>Field Strength (nT)</b>
	HDGM	5/2/2017	9.80	65.90	51,636

<b>Design</b>	Plan #1 2May2017 jcsdi			
<b>Audit Notes:</b>				
<b>Version:</b>	<b>Phase:</b>	PLAN	<b>Tie On Depth:</b>	0.00
<b>Vertical Section:</b>	<b>Depth From (TVD) (usft)</b>	<b>+N/-S (usft)</b>	<b>+E/-W (usft)</b>	<b>Direction (°)</b>
	0.00	0.00	0.00	13.73

<b>Plan Sections</b>										
Measured Depth (usft)	Inclination (°)	Azimuth (°)	Vertical Depth (usft)	+N/-S (usft)	+E/-W (usft)	Dogleg Rate (°/100usft)	Build Rate (°/100usft)	Turn Rate (°/100usft)	TFO (°)	Target
0.00	0.00	0.00	0.00	0.00	0.00	0.00	0.00	0.00	0.00	
150.00	0.00	0.00	150.00	0.00	0.00	0.00	0.00	0.00	0.00	
753.80	18.11	13.73	743.79	91.95	22.47	3.00	3.00	0.00	13.73	
5,010.38	18.11	13.73	4,789.42	1,377.52	336.63	0.00	0.00	0.00	0.00	
6,217.98	0.00	0.00	5,977.00	1,561.42	381.57	1.50	-1.50	0.00	180.00	TR 331-28-597 MVRI
9,807.98	0.00	0.00	9,567.00	1,561.42	381.57	0.00	0.00	0.00	0.00	TR 331-28-597 PBHL

<b>Database:</b>	Grand Junction District	<b>Local Co-ordinate Reference:</b>	Well TR 331-28-597 - Slot B 11
<b>Company:</b>	TEP Rocky Mountain LLC	<b>TVD Reference:</b>	GL 8481.4' & RKB 24' @ 8505.40usft
<b>Project:</b>	Garfield County, CO NAD83	<b>MD Reference:</b>	GL 8481.4' & RKB 24' @ 8505.40usft
<b>Site:</b>	TR 32-28-597 Pad	<b>North Reference:</b>	True
<b>Well:</b>	TR 331-28-597	<b>Survey Calculation Method:</b>	Minimum Curvature
<b>Wellbore:</b>	OH		
<b>Design:</b>	Plan #1 2May2017 jcsdi		

Planned Survey									
Measured Depth (usft)	Inclination (°)	Azimuth (°)	Vertical Depth (usft)	+N/-S (usft)	+E/-W (usft)	Vertical Section (usft)	Dogleg Rate (°/100usft)	Build Rate (°/100usft)	Turn Rate (°/100usft)
0.00	0.00	0.00	0.00	0.00	0.00	0.00	0.00	0.00	0.00
100.00	0.00	0.00	100.00	0.00	0.00	0.00	0.00	0.00	0.00
150.00	0.00	0.00	150.00	0.00	0.00	0.00	0.00	0.00	0.00
200.00	1.50	13.73	199.99	0.64	0.16	0.65	3.00	3.00	0.00
300.00	4.50	13.73	299.85	5.72	1.40	5.89	3.00	3.00	0.00
400.00	7.50	13.73	399.29	15.87	3.88	16.34	3.00	3.00	0.00
500.00	10.50	13.73	498.04	31.07	7.59	31.98	3.00	3.00	0.00
600.00	13.50	13.73	595.85	51.26	12.53	52.77	3.00	3.00	0.00
700.00	16.50	13.73	692.43	76.40	18.67	78.65	3.00	3.00	0.00
753.80	18.11	13.73	743.79	91.95	22.47	94.65	3.00	3.00	0.00
800.00	18.11	13.73	787.70	105.90	25.88	109.02	0.00	0.00	0.00
900.00	18.11	13.73	882.75	136.10	33.26	140.11	0.00	0.00	0.00
1,000.00	18.11	13.73	977.79	166.30	40.64	171.20	0.00	0.00	0.00
1,100.00	18.11	13.73	1,072.83	196.51	48.02	202.29	0.00	0.00	0.00
1,200.00	18.11	13.73	1,167.88	226.71	55.40	233.38	0.00	0.00	0.00
1,300.00	18.11	13.73	1,262.92	256.91	62.78	264.47	0.00	0.00	0.00
1,400.00	18.11	13.73	1,357.97	287.11	70.16	295.56	0.00	0.00	0.00
1,500.00	18.11	13.73	1,453.01	317.31	77.54	326.65	0.00	0.00	0.00
1,600.00	18.11	13.73	1,548.05	347.52	84.92	357.74	0.00	0.00	0.00
1,700.00	18.11	13.73	1,643.10	377.72	92.30	388.83	0.00	0.00	0.00
1,800.00	18.11	13.73	1,738.14	407.92	99.69	419.92	0.00	0.00	0.00
1,900.00	18.11	13.73	1,833.19	438.12	107.07	451.02	0.00	0.00	0.00
2,000.00	18.11	13.73	1,928.23	468.32	114.45	482.11	0.00	0.00	0.00
2,100.00	18.11	13.73	2,023.27	498.53	121.83	513.20	0.00	0.00	0.00
2,200.00	18.11	13.73	2,118.32	528.73	129.21	544.29	0.00	0.00	0.00
2,300.00	18.11	13.73	2,213.36	558.93	136.59	575.38	0.00	0.00	0.00
2,400.00	18.11	13.73	2,308.41	589.13	143.97	606.47	0.00	0.00	0.00
2,500.00	18.11	13.73	2,403.45	619.34	151.35	637.56	0.00	0.00	0.00
2,600.00	18.11	13.73	2,498.49	649.54	158.73	668.65	0.00	0.00	0.00
2,700.00	18.11	13.73	2,593.54	679.74	166.11	699.74	0.00	0.00	0.00
2,800.00	18.11	13.73	2,688.58	709.94	173.49	730.83	0.00	0.00	0.00
2,900.00	18.11	13.73	2,783.63	740.14	180.87	761.92	0.00	0.00	0.00
3,000.00	18.11	13.73	2,878.67	770.35	188.25	793.01	0.00	0.00	0.00
3,100.00	18.11	13.73	2,973.71	800.55	195.63	824.10	0.00	0.00	0.00
3,200.00	18.11	13.73	3,068.76	830.75	203.01	855.20	0.00	0.00	0.00
3,300.00	18.11	13.73	3,163.80	860.95	210.39	886.29	0.00	0.00	0.00
3,400.00	18.11	13.73	3,258.85	891.15	217.78	917.38	0.00	0.00	0.00
3,415.94	18.11	13.73	3,274.00	895.97	218.95	922.33	0.00	0.00	0.00
Wasatch									
3,500.00	18.11	13.73	3,353.89	921.36	225.16	948.47	0.00	0.00	0.00
3,515.00	18.11	13.73	3,368.15	925.89	226.26	953.13	0.00	0.00	0.00
9 5/8" Surface @ 3515' MD									
3,600.00	18.11	13.73	3,448.93	951.56	232.54	979.56	0.00	0.00	0.00
3,700.00	18.11	13.73	3,543.98	981.76	239.92	1,010.65	0.00	0.00	0.00
3,800.00	18.11	13.73	3,639.02	1,011.96	247.30	1,041.74	0.00	0.00	0.00
3,900.00	18.11	13.73	3,734.07	1,042.16	254.68	1,072.83	0.00	0.00	0.00
4,000.00	18.11	13.73	3,829.11	1,072.37	262.06	1,103.92	0.00	0.00	0.00
4,100.00	18.11	13.73	3,924.15	1,102.57	269.44	1,135.01	0.00	0.00	0.00
4,200.00	18.11	13.73	4,019.20	1,132.77	276.82	1,166.10	0.00	0.00	0.00
4,300.00	18.11	13.73	4,114.24	1,162.97	284.20	1,197.19	0.00	0.00	0.00
4,400.00	18.11	13.73	4,209.29	1,193.17	291.58	1,228.28	0.00	0.00	0.00
4,500.00	18.11	13.73	4,304.33	1,223.38	298.96	1,259.38	0.00	0.00	0.00
4,600.00	18.11	13.73	4,399.37	1,253.58	306.34	1,290.47	0.00	0.00	0.00
4,609.08	18.11	13.73	4,408.00	1,256.32	307.01	1,293.29	0.00	0.00	0.00

<b>Database:</b>	Grand Junction District	<b>Local Co-ordinate Reference:</b>	Well TR 331-28-597 - Slot B11
<b>Company:</b>	TEP Rocky Mountain LLC	<b>TVD Reference:</b>	GL 8481.4' & RKB 24' @ 8505.40usft
<b>Project:</b>	Garfield County, CO NAD83	<b>MD Reference:</b>	GL 8481.4' & RKB 24' @ 8505.40usft
<b>Site:</b>	TR 32-28-597 Pad	<b>North Reference:</b>	True
<b>Well:</b>	TR 331-28-597	<b>Survey Calculation Method:</b>	Minimum Curvature
<b>Wellbore:</b>	OH		
<b>Design:</b>	Plan #1 2May2017 jcsdi		

Planned Survey										
Measured Depth (usft)	Inclination (°)	Azimuth (°)	Vertical Depth (usft)	+N/-S (usft)	+E/-W (usft)	Vertical Section (usft)	Dogleg Rate (°/100usft)	Build Rate (°/100usft)	Turn Rate (°/100usft)	
<b>Top G Sand</b>										
4,634.33	18.11	13.73	4,432.00	1,263.94	308.88	1,301.14	0.00	0.00	0.00	
<b>Base G Sand</b>										
4,700.00	18.11	13.73	4,494.42	1,283.78	313.72	1,321.56	0.00	0.00	0.00	
4,797.41	18.11	13.73	4,587.00	1,313.20	320.91	1,351.84	0.00	0.00	0.00	
<b>Fort Union</b>										
4,800.00	18.11	13.73	4,589.46	1,313.98	321.10	1,352.65	0.00	0.00	0.00	
4,900.00	18.11	13.73	4,684.51	1,344.18	328.48	1,383.74	0.00	0.00	0.00	
5,000.00	18.11	13.73	4,779.55	1,374.39	335.86	1,414.83	0.00	0.00	0.00	
5,010.38	18.11	13.73	4,789.42	1,377.52	336.63	1,418.06	0.00	0.00	0.00	
5,100.00	16.77	13.73	4,874.91	1,403.61	343.01	1,444.92	1.50	-1.50	0.00	
5,200.00	15.27	13.73	4,971.03	1,430.42	349.56	1,472.51	1.50	-1.50	0.00	
5,300.00	13.77	13.73	5,067.83	1,454.78	355.51	1,497.58	1.50	-1.50	0.00	
5,400.00	12.27	13.73	5,165.26	1,476.66	360.86	1,520.11	1.50	-1.50	0.00	
5,500.00	10.77	13.73	5,263.24	1,496.06	365.60	1,540.08	1.50	-1.50	0.00	
5,600.00	9.27	13.73	5,361.71	1,512.96	369.73	1,557.48	1.50	-1.50	0.00	
5,700.00	7.77	13.73	5,460.61	1,527.35	373.25	1,572.30	1.50	-1.50	0.00	
5,800.00	6.27	13.73	5,559.85	1,539.22	376.15	1,584.52	1.50	-1.50	0.00	
5,900.00	4.77	13.73	5,659.39	1,548.57	378.43	1,594.13	1.50	-1.50	0.00	
5,940.74	4.16	13.73	5,700.00	1,551.65	379.18	1,597.31	1.50	-1.50	0.00	
<b>Ohio Creek</b>										
6,000.00	3.27	13.73	5,759.14	1,555.38	380.09	1,601.14	1.50	-1.50	0.00	
6,100.00	1.77	13.73	5,859.04	1,559.65	381.14	1,605.54	1.50	-1.50	0.00	
6,200.00	0.27	13.73	5,959.02	1,561.37	381.56	1,607.32	1.50	-1.50	0.00	
6,217.98	0.00	0.00	5,977.00	1,561.42	381.57	1,607.36	1.50	-1.50	0.00	
<b>Mesaverde - TR 331-28-597 MVRD</b>										
6,300.00	0.00	0.00	6,059.02	1,561.42	381.57	1,607.36	0.00	0.00	0.00	
6,400.00	0.00	0.00	6,159.02	1,561.42	381.57	1,607.36	0.00	0.00	0.00	
6,500.00	0.00	0.00	6,259.02	1,561.42	381.57	1,607.36	0.00	0.00	0.00	
6,600.00	0.00	0.00	6,359.02	1,561.42	381.57	1,607.36	0.00	0.00	0.00	
6,700.00	0.00	0.00	6,459.02	1,561.42	381.57	1,607.36	0.00	0.00	0.00	
6,800.00	0.00	0.00	6,559.02	1,561.42	381.57	1,607.36	0.00	0.00	0.00	
6,847.98	0.00	0.00	6,607.00	1,561.42	381.57	1,607.36	0.00	0.00	0.00	
<b>Top Gas</b>										
6,900.00	0.00	0.00	6,659.02	1,561.42	381.57	1,607.36	0.00	0.00	0.00	
7,000.00	0.00	0.00	6,759.02	1,561.42	381.57	1,607.36	0.00	0.00	0.00	
7,100.00	0.00	0.00	6,859.02	1,561.42	381.57	1,607.36	0.00	0.00	0.00	
7,200.00	0.00	0.00	6,959.02	1,561.42	381.57	1,607.36	0.00	0.00	0.00	
7,300.00	0.00	0.00	7,059.02	1,561.42	381.57	1,607.36	0.00	0.00	0.00	
7,400.00	0.00	0.00	7,159.02	1,561.42	381.57	1,607.36	0.00	0.00	0.00	
7,500.00	0.00	0.00	7,259.02	1,561.42	381.57	1,607.36	0.00	0.00	0.00	
7,600.00	0.00	0.00	7,359.02	1,561.42	381.57	1,607.36	0.00	0.00	0.00	
7,700.00	0.00	0.00	7,459.02	1,561.42	381.57	1,607.36	0.00	0.00	0.00	
7,800.00	0.00	0.00	7,559.02	1,561.42	381.57	1,607.36	0.00	0.00	0.00	
7,900.00	0.00	0.00	7,659.02	1,561.42	381.57	1,607.36	0.00	0.00	0.00	
8,000.00	0.00	0.00	7,759.02	1,561.42	381.57	1,607.36	0.00	0.00	0.00	
8,100.00	0.00	0.00	7,859.02	1,561.42	381.57	1,607.36	0.00	0.00	0.00	
8,200.00	0.00	0.00	7,959.02	1,561.42	381.57	1,607.36	0.00	0.00	0.00	
8,300.00	0.00	0.00	8,059.02	1,561.42	381.57	1,607.36	0.00	0.00	0.00	
8,400.00	0.00	0.00	8,159.02	1,561.42	381.57	1,607.36	0.00	0.00	0.00	
8,496.98	0.00	0.00	8,256.00	1,561.42	381.57	1,607.36	0.00	0.00	0.00	
<b>Cameo Coals</b>										
8,500.00	0.00	0.00	8,259.02	1,561.42	381.57	1,607.36	0.00	0.00	0.00	

<b>Database:</b>	Grand Junction District	<b>Local Co-ordinate Reference:</b>	Well TR 331-28-597 - Slot B 11
<b>Company:</b>	TEP Rocky Mountain LLC	<b>TVD Reference:</b>	GL 8481.4' & RKB 24' @ 8505.40usft
<b>Project:</b>	Garfield County, CO NAD83	<b>MD Reference:</b>	GL 8481.4' & RKB 24' @ 8505.40usft
<b>Site:</b>	TR 32-28-597 Pad	<b>North Reference:</b>	True
<b>Well:</b>	TR 331-28-597	<b>Survey Calculation Method:</b>	Minimum Curvature
<b>Wellbore:</b>	OH		
<b>Design:</b>	Plan #1 2May2017 jcsdi		

Planned Survey									
Measured Depth (usft)	Inclination (°)	Azimuth (°)	Vertical Depth (usft)	+N/-S (usft)	+E/-W (usft)	Vertical Section (usft)	Dogleg Rate (°/100usft)	Build Rate (°/100usft)	Turn Rate (°/100usft)
8,600.00	0.00	0.00	8,359.02	1,561.42	381.57	1,607.36	0.00	0.00	0.00
8,700.00	0.00	0.00	8,459.02	1,561.42	381.57	1,607.36	0.00	0.00	0.00
8,800.00	0.00	0.00	8,559.02	1,561.42	381.57	1,607.36	0.00	0.00	0.00
8,900.00	0.00	0.00	8,659.02	1,561.42	381.57	1,607.36	0.00	0.00	0.00
8,926.98	0.00	0.00	8,686.00	1,561.42	381.57	1,607.36	0.00	0.00	0.00
<b>Rollins Ss</b>									
9,000.00	0.00	0.00	8,759.02	1,561.42	381.57	1,607.36	0.00	0.00	0.00
9,100.00	0.00	0.00	8,859.02	1,561.42	381.57	1,607.36	0.00	0.00	0.00
9,113.98	0.00	0.00	8,873.00	1,561.42	381.57	1,607.36	0.00	0.00	0.00
<b>Cozzette</b>									
9,200.00	0.00	0.00	8,959.02	1,561.42	381.57	1,607.36	0.00	0.00	0.00
9,300.00	0.00	0.00	9,059.02	1,561.42	381.57	1,607.36	0.00	0.00	0.00
9,341.98	0.00	0.00	9,101.00	1,561.42	381.57	1,607.36	0.00	0.00	0.00
<b>Corocran</b>									
9,400.00	0.00	0.00	9,159.02	1,561.42	381.57	1,607.36	0.00	0.00	0.00
9,500.00	0.00	0.00	9,259.02	1,561.42	381.57	1,607.36	0.00	0.00	0.00
9,507.98	0.00	0.00	9,267.00	1,561.42	381.57	1,607.36	0.00	0.00	0.00
<b>Sego</b>									
9,600.00	0.00	0.00	9,359.02	1,561.42	381.57	1,607.36	0.00	0.00	0.00
9,700.00	0.00	0.00	9,459.02	1,561.42	381.57	1,607.36	0.00	0.00	0.00
9,800.00	0.00	0.00	9,559.02	1,561.42	381.57	1,607.36	0.00	0.00	0.00
9,807.98	0.00	0.00	9,567.00	1,561.42	381.57	1,607.36	0.00	0.00	0.00
<b>TR 331-28-597 PBHL</b>									

Design Targets									
Target Name - hit/miss target - Shape	Dip Angle (°)	Dip Dir. (°)	TVD (usft)	+N/-S (usft)	+E/-W (usft)	Northing (usft)	Easting (usft)	Latitude	Longitude
TR 331-28-597 MVRD - plan hits target center - Circle (radius 50.00)	0.00	0.00	5,977.00	1,561.42	381.57	1,652,295.00	2,216,470.00	39.5914186	-108.2807048
TR 331-28-597 PBHL - plan hits target center - Point	0.00	0.00	9,567.00	1,561.42	381.57	1,652,295.00	2,216,470.00	39.5914186	-108.2807048

Casing Points					
Measured Depth (usft)	Vertical Depth (usft)	Name	Casing Diameter (in)	Hole Diameter (in)	
3,515.00	3,368.15	9 5/8" Surface @ 3515' MD	9.62	9.62	

<b>Database:</b>	Grand Junction District	<b>Local Co-ordinate Reference:</b>	Well TR 331-28-597 - Slot B 11
<b>Company:</b>	TEP Rocky Mountain LLC	<b>TVD Reference:</b>	GL 8481.4' & RKB 24' @ 8505.40usft
<b>Project:</b>	Garfield County, CO NAD83	<b>MD Reference:</b>	GL 8481.4' & RKB 24' @ 8505.40usft
<b>Site:</b>	TR 32-28-597 Pad	<b>North Reference:</b>	True
<b>Well:</b>	TR 331-28-597	<b>Survey Calculation Method:</b>	Minimum Curvature
<b>Wellbore:</b>	OH		
<b>Design:</b>	Plan #1 2May2017 jcsdi		

Formations						
Measured Depth (usft)	Vertical Depth (usft)	Name	Lithology	Dip (°)	Dip Direction (°)	
3,415.94	3,274.00	Wasatch		0.00	0.00	
4,609.08	4,408.00	Top G Sand		0.00	0.00	
4,634.33	4,432.00	Base G Sand		0.00	0.00	
4,797.41	4,587.00	Fort Union		0.00	0.00	
5,940.74	5,700.00	Ohio Creek		0.00	0.00	
6,217.98	5,977.00	Mesaverde		0.00	0.00	
6,847.98	6,607.00	Top Gas		0.00	0.00	
8,496.98	8,256.00	Cameo Coals		0.00	0.00	
8,926.98	8,686.00	Rollins Ss		0.00	0.00	
9,113.98	8,873.00	Cozzette		0.00	0.00	
9,341.98	9,101.00	Corocran		0.00	0.00	
9,507.98	9,267.00	Sego		0.00	0.00	