

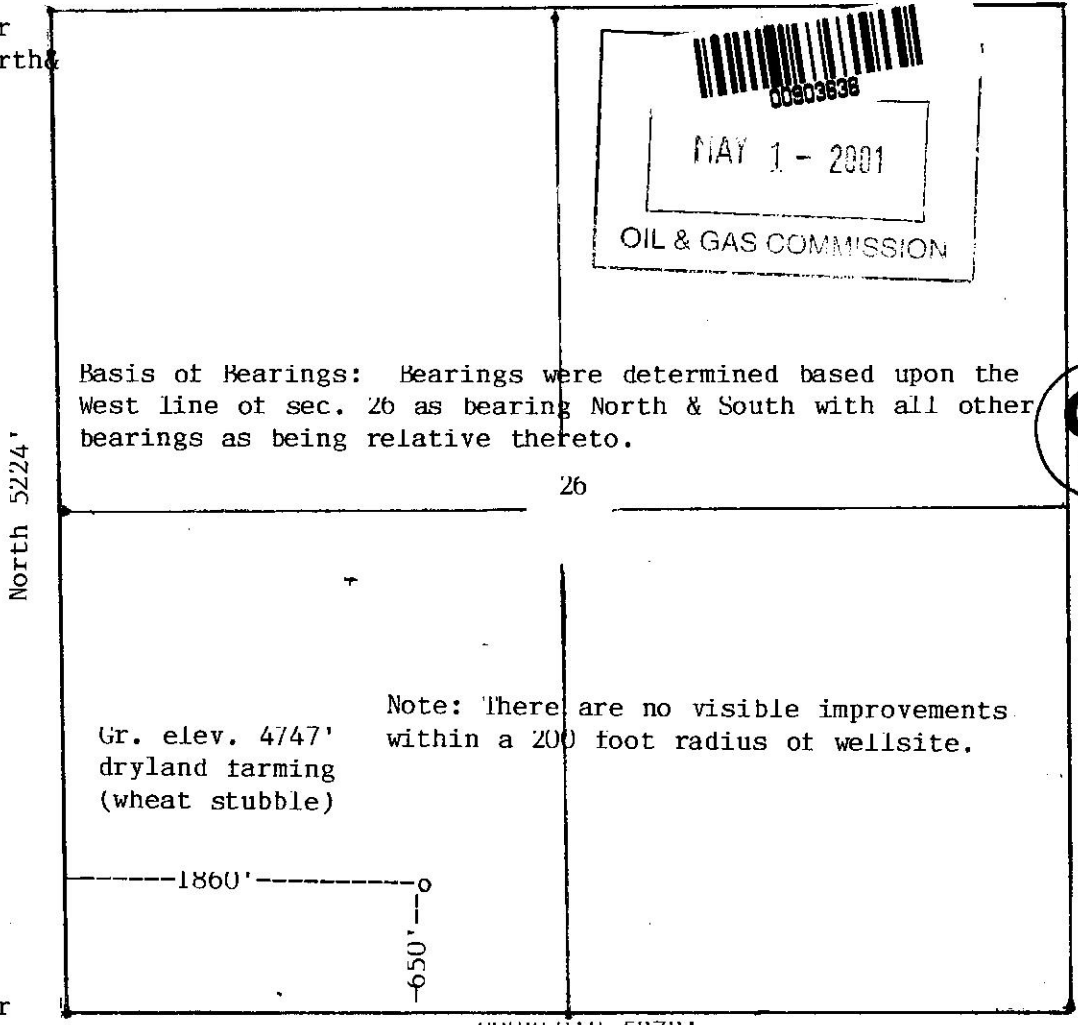


Holloway & Holloway, Inc.  
 P.O. Box 3331  
 Greeley, CO 80633  
 (303) 867-3715  
 (303) 352-5852

R6/W

NE cor. re-bar

NW cor. re-bar  
 line roads North  
 West



SW cor. re-bar

SE cor. re-bar  
 in roadway

Scale --- 1" = 1000'

Basis of elev spot elev at SE cor. 4764'

In accordance with a request from H.S. Resources, Inc.  
 the Undersigned has determined the location of the HSR-Sharkey 14-26 well  
 to be 650' FSL & 1860' FWL at right angles as co-ordinates  
 Section 26 Township 4N Range 67W of the 6th principal Meridian  
 Weld County, Colorado.

I hereby certify that this oil and/or gas well location certificate was prepared for H.S. Resources, Inc. that it is not a land survey plat or improvement survey plat, and that it is not to be relied upon for the establishment of fence, building or other future improvement lines

Date 4-9-2001

*Ben J. Holloway*  
 Holloway & Holloway, Inc.  
 States of  
 Colorado

