

COMPANY: MALLARD OPERATING COMPANY

WELL: ELK SPRING UNIT # 4

FIELD: WINTER VALLEY

COUNTY: MOFFAT

STATE: COLORADO

COUNTY: MOFFAT  
Field: WINTER VALLEY  
Location: 1961' FSL & 2150' FEL  
Well: ELK SPRING UNIT # 4  
Company: MALLARD OPERATING COMPANY

LOCATION

Schlumberger

CEMENT BOND LOG  
CEMENT MAP  
GAMMA RAY

1961' FSL & 2150' FEL  
NW/SE

Elev.: K.B. 6787 ft  
G.L. 6774 ft  
D.F. 6786 ft

Permanent Datum: GROUND LEVEL

Elev.: 6774 ft

Log Measured From: KELLY BUSHING

13.0 ft above Perm. Datum

Drilling Measured From: KELLY BUSHING

API Serial No.  
N/A

SECTION  
30

TOWNSHIP  
5N

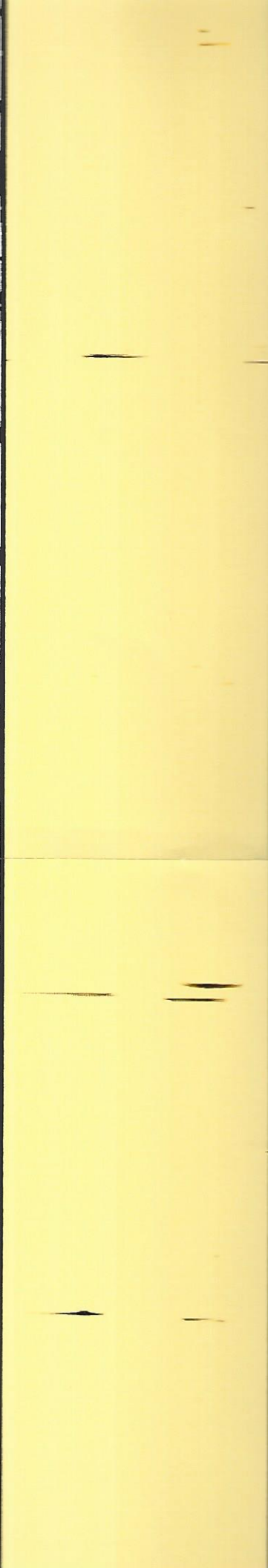
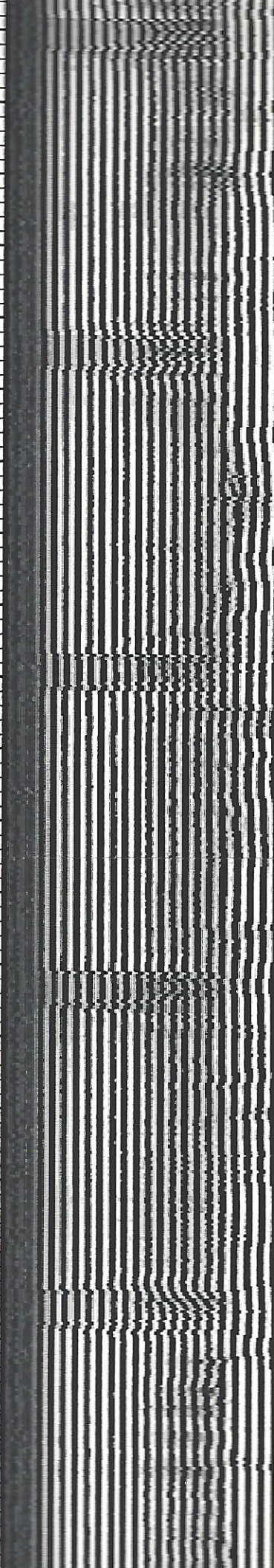
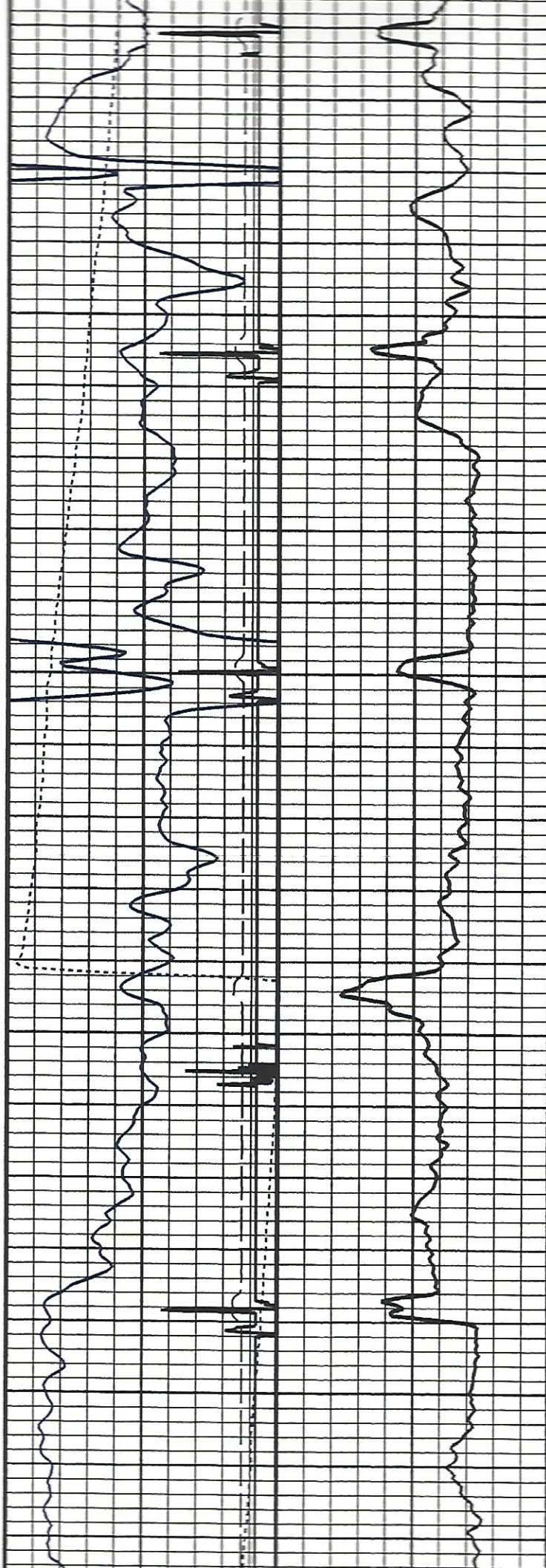
RANGE  
98W

Logging Date	16-FEB-2000
Run Number	1
Depth Driller	9500 ft
Schlumberger Depth	9402 ft
Bottom Log Interval	9402 ft
Top Log Interval	
Casing Fluid Type	WATER
Salinity	
Density	8.6 lbm/gal
Fluid Level	0 ft
BIT/CASING/TUBING STRING	
Bit Size	7.875 in
From	0 ft
To	9500 ft
Casing/Tubing Size	5.500 in
Weight	17 lbm/ft
Grade	
From	0 ft
To	9402 ft
Maximum Recorded Temperatures	
Logger On Bottom	Time 16-FEB-2000 17:30
Unit Number	Location 120 VERNAL, UTAH
Recorded By	R SHOCKEY
Witnessed By	R SHELTON



4400

4500





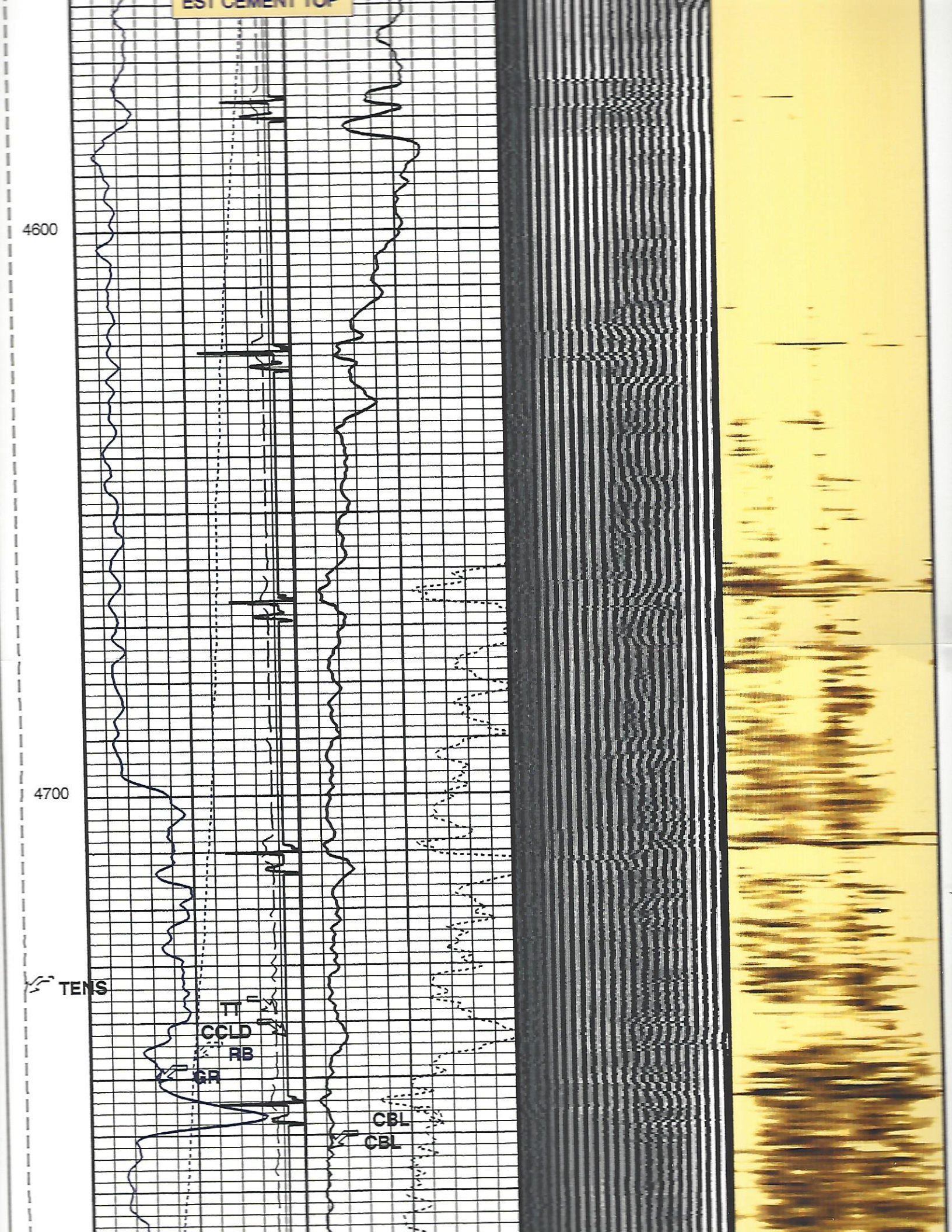
4600

4700

TENS

TT  
CCLD  
RB  
GR

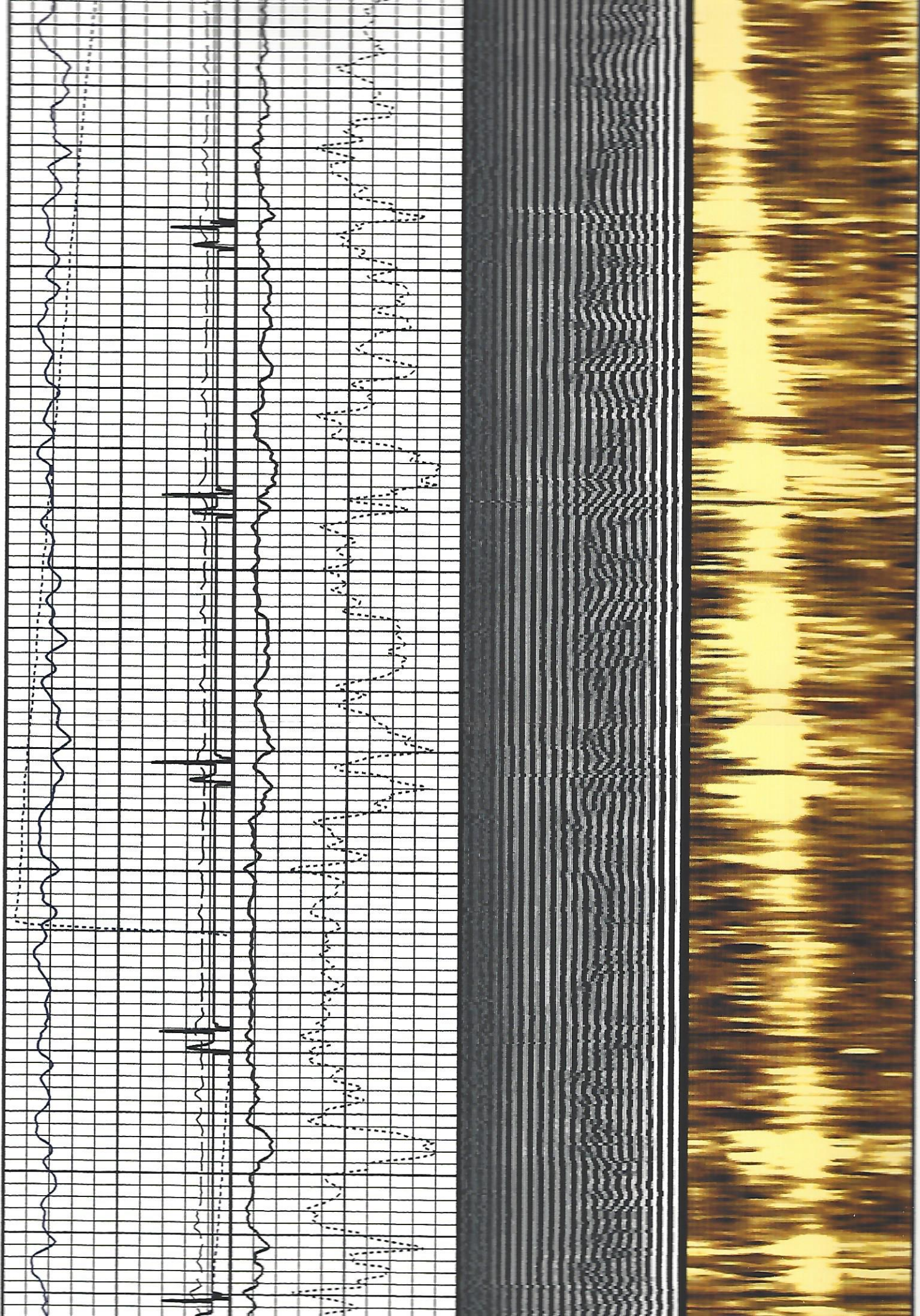
CBL  
CBL





4900

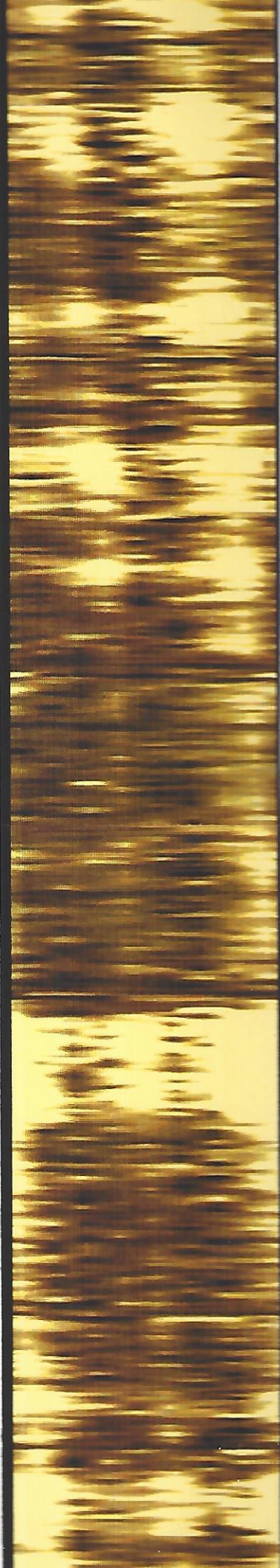
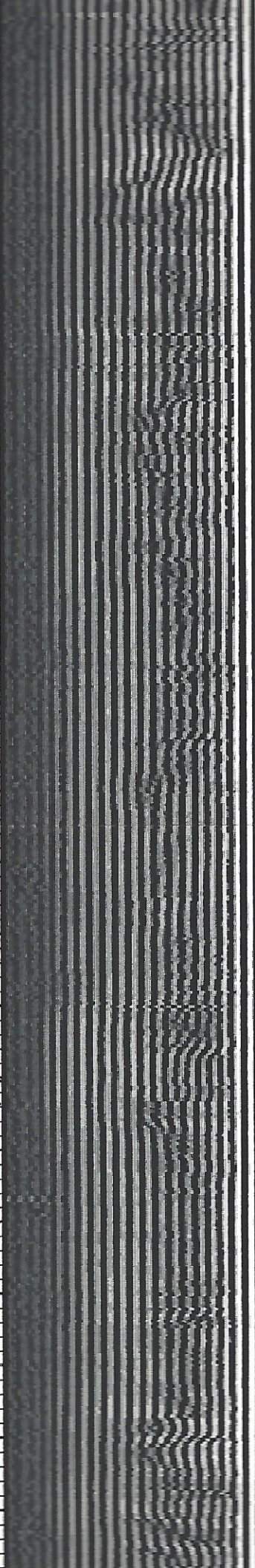
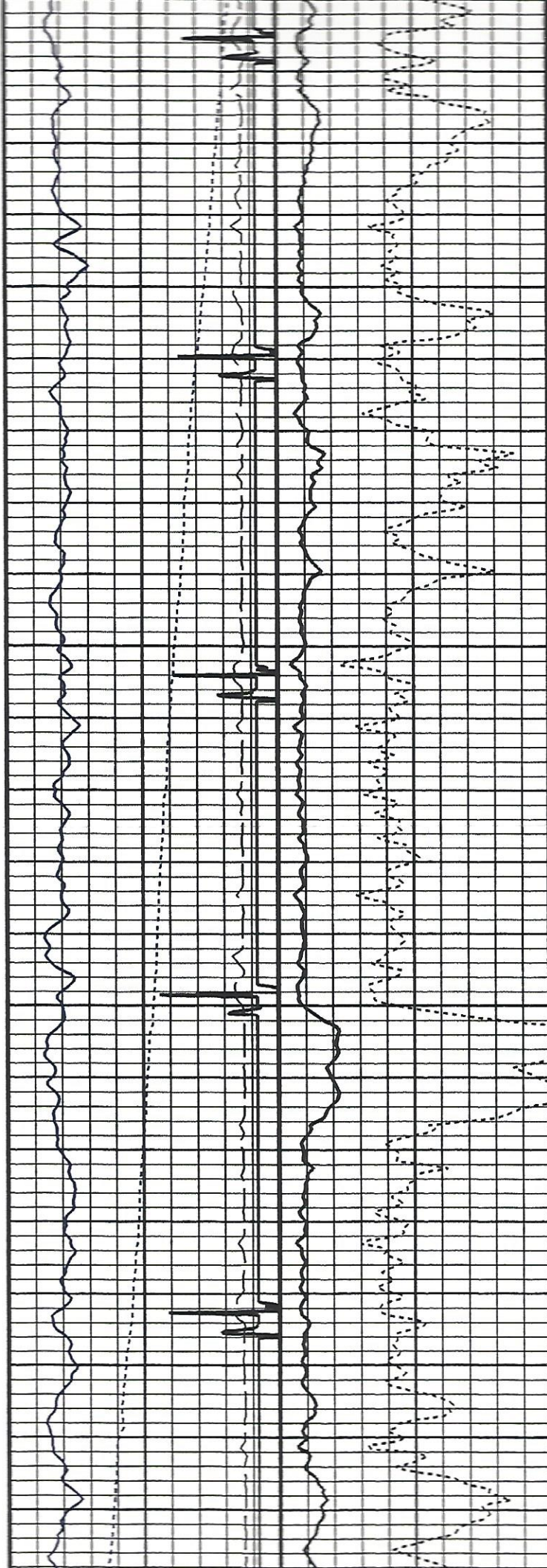
5000





5100

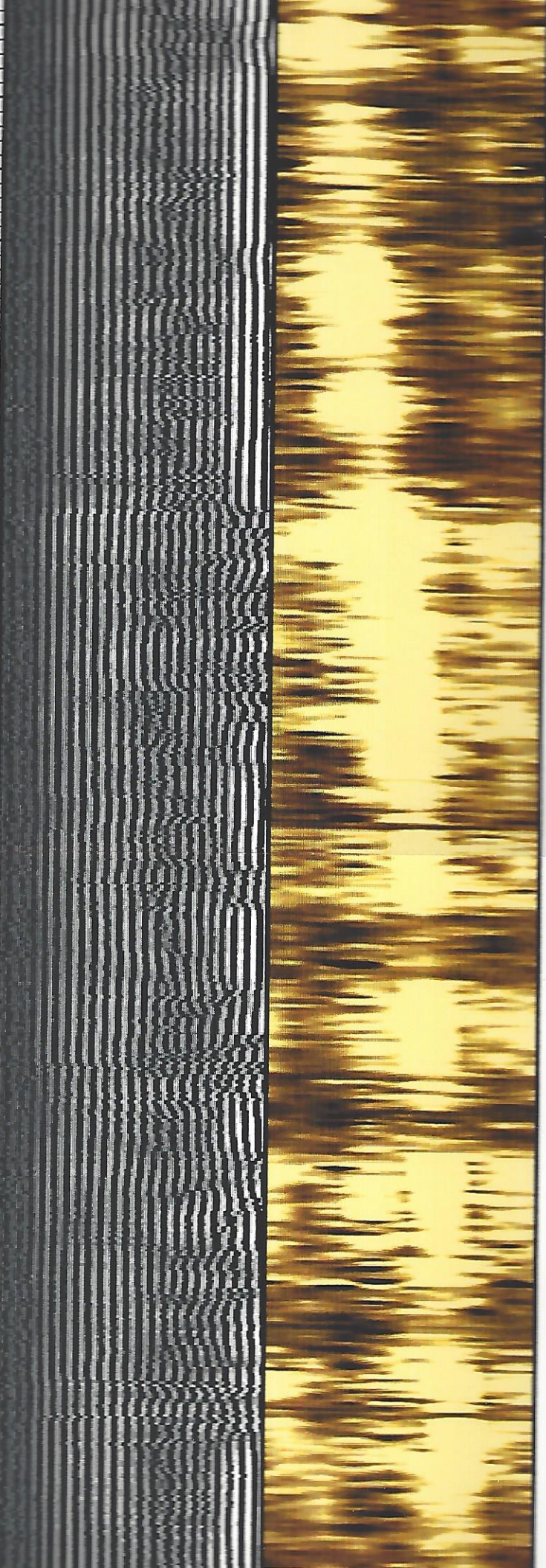
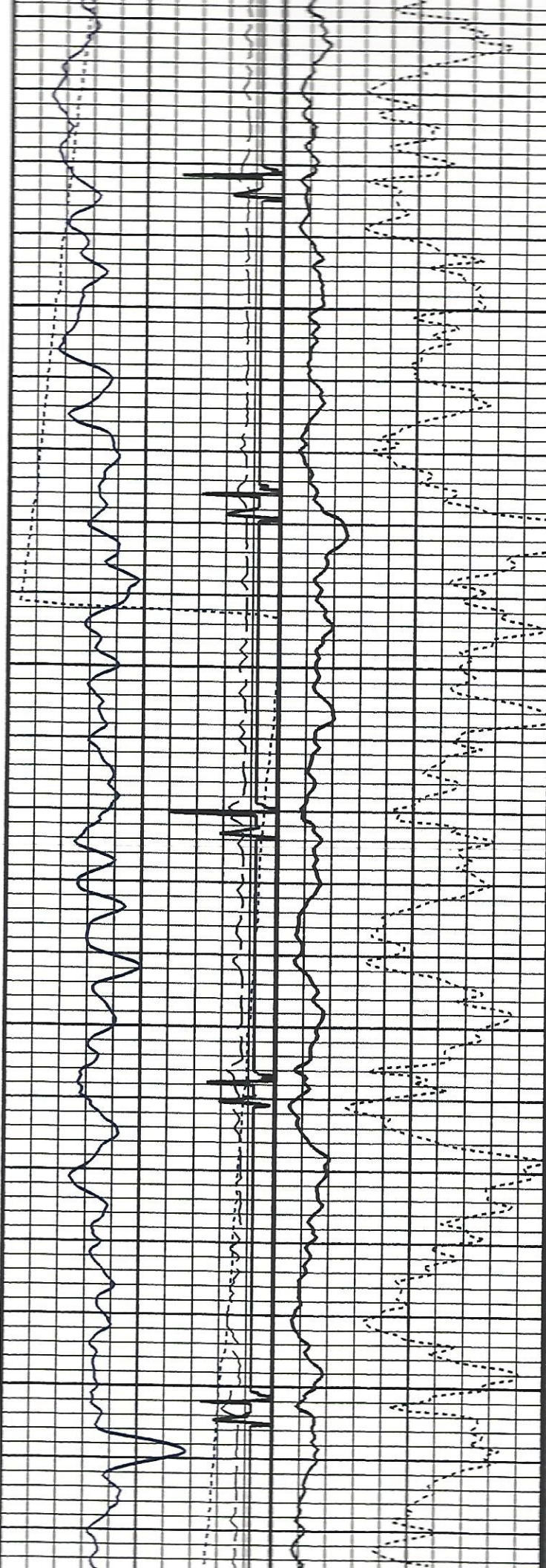
5200





5400

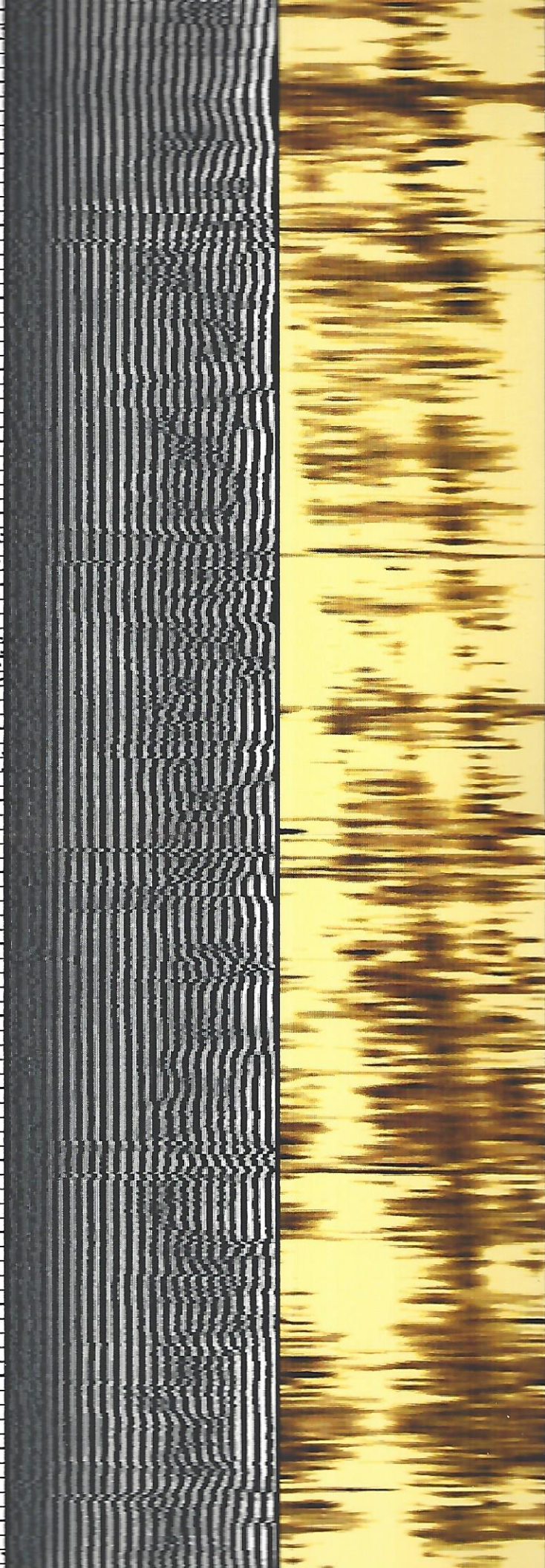
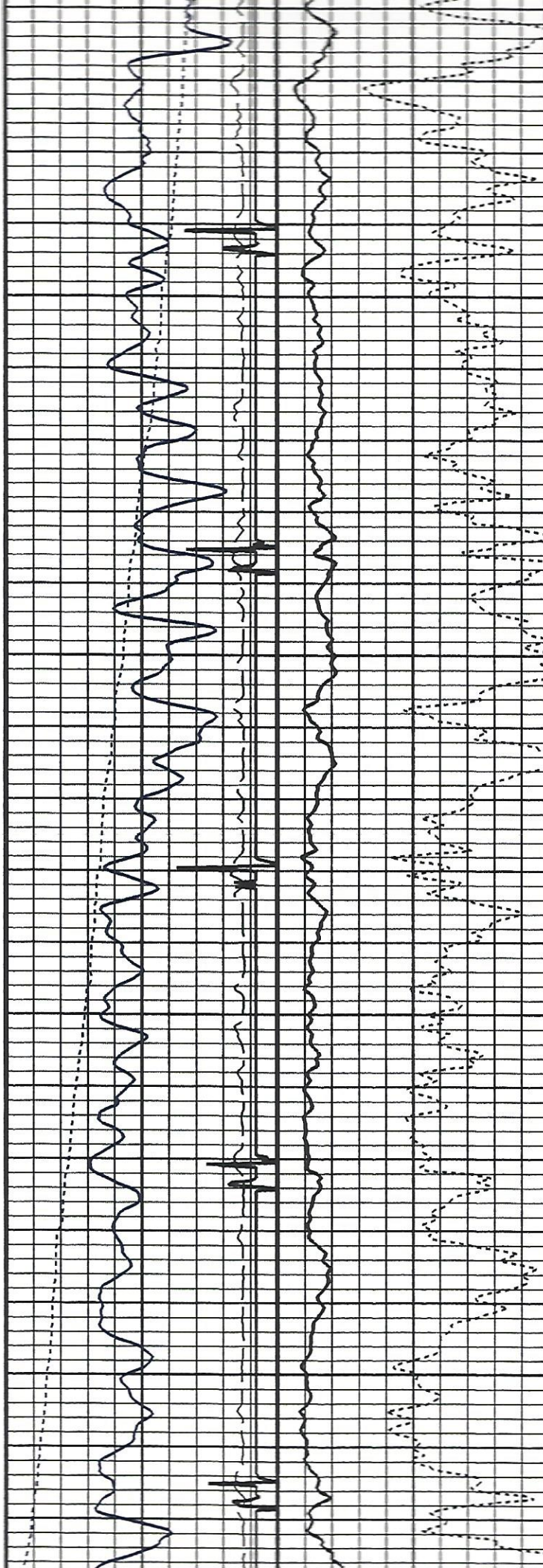
5500





5600

5700





5900

6000

