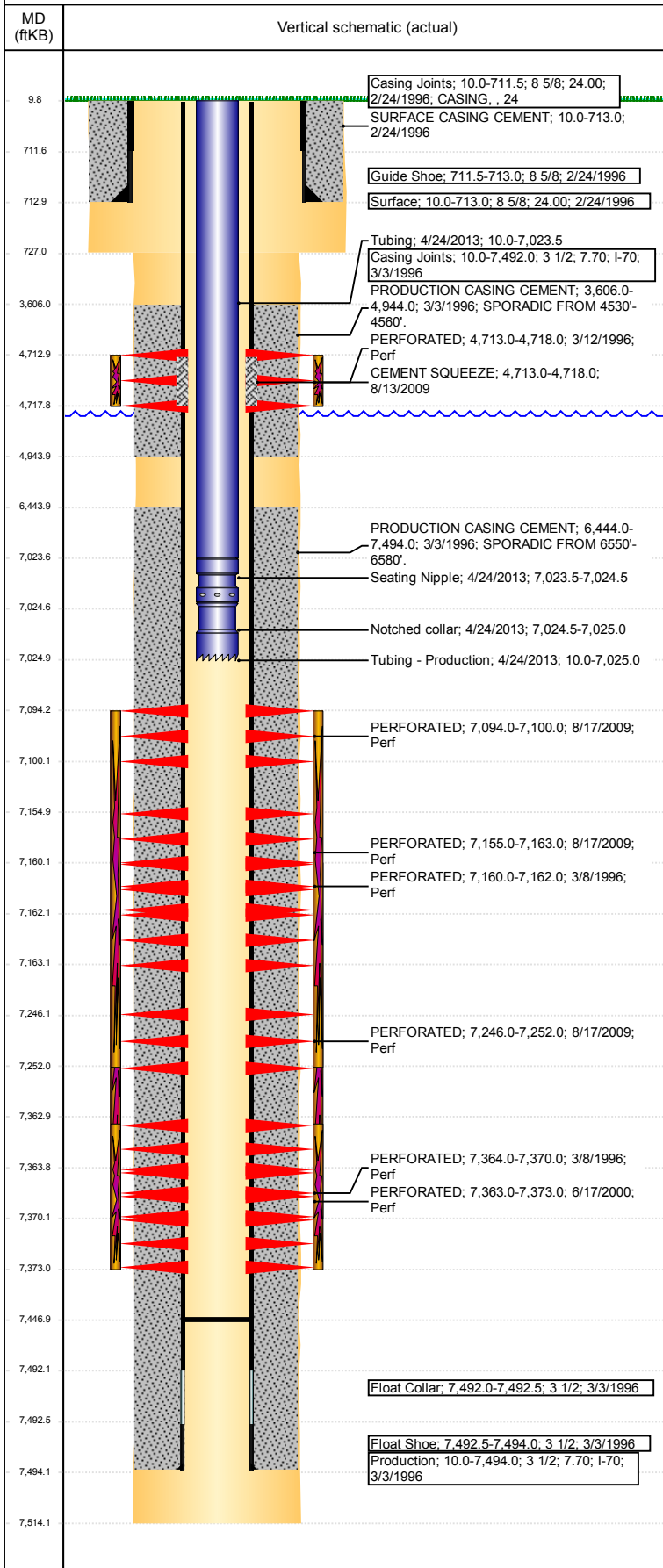


Wellbore Schematic Input Report

Well Name: HSR-GUN CLUB 16-34

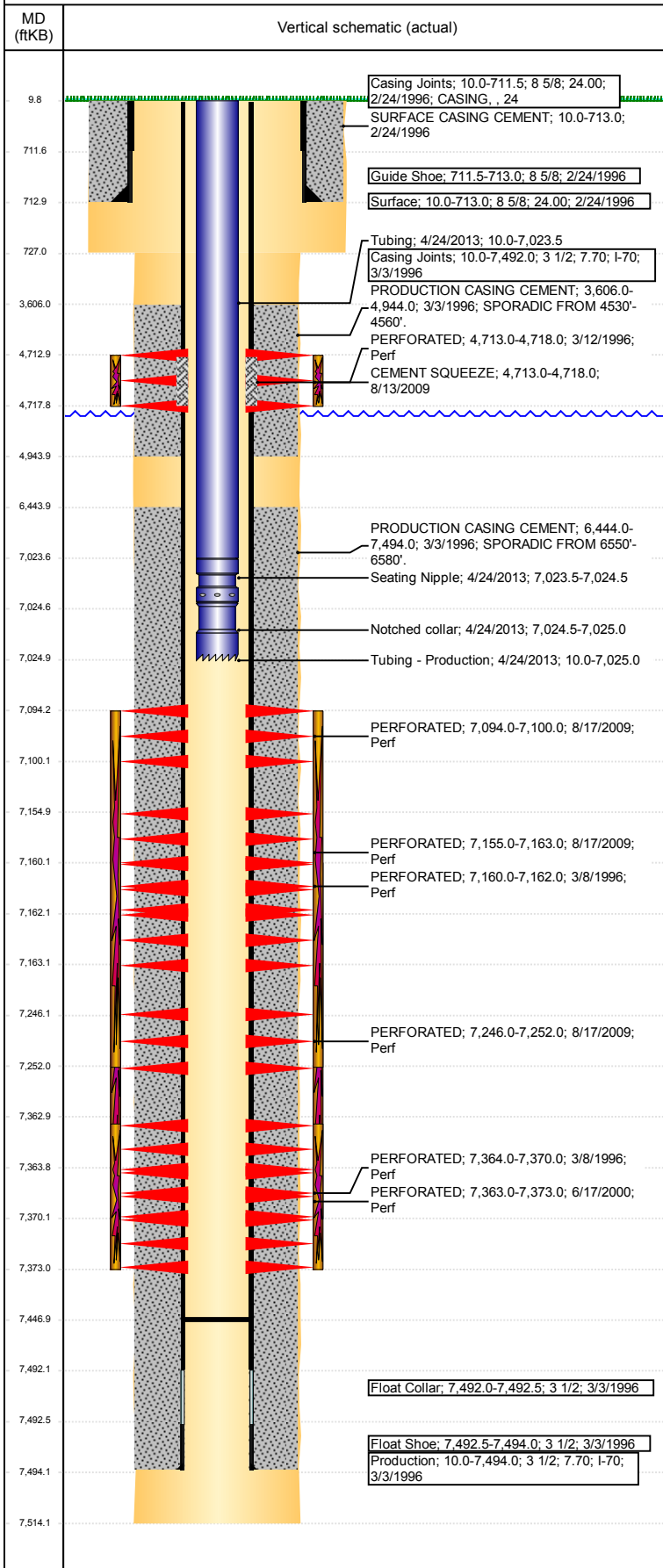
DEVIATED - ORIGINAL HOLE, 5/12/2017 9:11:12 AM



Well Header							
API 05-123-18913	Business Unit DJ BASIN		District 15	Well Config DEVIATED			
Original KB Elevation (ft) 4,760	KB - GL / MSL (ftKB) 10.00		Spud Date 2/23/1996		P & A Date		
Comment							
Directions To Well							
Congressional Location							
Quarter 3 NW	Quarter 4 SE	Section 34	Township 4	Twntshp N/S Dir N	Range 65	Range E/W Dir W	
Bottom Hole Location							
North-South Distance (ft) 764.0		From N or S Line FSL		East-West Distance (ft) 788.0		From E or W Line FEL	
Plug Back Total Depths							
Date	Depth (ftKB)	Method		Com			
3/8/1996	7,396.0	CASED HOLE LOG		DEPTH LOGGER ON CBL			
4/18/2013	7,447.0	TAG		CLEANOUT TO 7447'			
Wellbore Sections							
Section Des		Size (in)		Act Top, MD (ftKB)		Act Btm, MD (ftKB)	
SURFACE		12 1/4		10		727	
PRODUCTION		7 7/8		727		7,514	
Zone Statuses							
Zone Name	Status Date	Status	Fluid Type	Job	Prod Method		
NIOBRARA	3/25/1996	PR	Oil	DRILLING/CO...	Flowing		
NIOBRARA	10/19/2009	PR	Oil	RE-FRAC, 8/11...			
NIOBRARA	11/20/2014	PR	Water				
NIOBRARA	5/9/2017	SI			Flowing		
CODELL	3/25/1996	PR	Oil	DRILLING/CO...			
CODELL	7/7/2000	PR	Oil	RE-FRAC, 6/13...			
CODELL	8/17/2009	SI	Oil	RE-FRAC, 8/11...	Flowing		
CODELL	10/19/2009	PR	Oil	RE-FRAC, 8/11...			
CODELL	11/20/2014	PR	Water				
SUSSEX	3/25/1996	PR	Oil	DRILLING/CO...	Flowing		
SUSSEX	8/13/2009	AB	Oil	RE-FRAC, 8/11...			
Casing Strings							
Surface, 713.0ftKB							
Casing Description	Run Date	OD (in)	Wt/Len (l...	Grade	Top, MD (ft...	MD (ftKB)	
Surface	2/24/1996	8 5/8	24.00		10.0	713.0	
Production, 7,494.0ftKB							
Casing Description	Run Date	OD (in)	Wt/Len (l...	Grade	Top, MD (ft...	MD (ftKB)	
Production	3/3/1996	3 1/2	7.70	I-70	10.0	7,494.0	
Cement							
Description				Top Depth (ftKB)		Bottom Depth (ftKB)	
SURFACE CASING CEMENT				10.0		713.0	
Description				Top Depth (ftKB)		Bottom Depth (ftKB)	
PRODUCTION CASING CEMENT				3,606.0		4,944.0	
Description				Top Depth (ftKB)		Bottom Depth (ftKB)	
PRODUCTION CASING CEMENT				6,444.0		7,494.0	
Description				Top Depth (ftKB)		Bottom Depth (ftKB)	
CEMENT SQUEEZE				4,713.0		4,718.0	
Tubing Strings							
Tubing Description	Run Date	String...	ID (in)	Wt (lb/ft)	Grade	Len (ft)	Set De...
Tubing - Production	4/24/2013	2 1/16	1.75	3.25	J-55	7,015.00	
Tubing Components							
Item Des	OD (in)	Wt (lb/ft)	Grade	Jts	Len (ft)	Btm (ftKB)	Btm (TVD) (ftKB)
Tubing	2 1/16	3.25	J-55	218	7,013.50	7,023.5	
Seating Nipple	2 1/16			1	1.00	7,024.5	
Notched collar	2 1/16			1	0.50	7,025.0	
Other In Hole							
Run Date	Des			OD (in)	Top (ftKB)	Btm (ftKB)	

Well Name: HSR-GUN CLUB 16-34

DEVIATED - ORIGINAL HOLE, 5/12/2017 9:11:13 AM



Date	Type	Top, MD (ftKB)	Btm, MD (ftKB)
3/2/1996	COMPENSATED DENSITY	10.0	7,404.0
3/2/1996	INDUCTION	10.0	7,464.0
3/8/1996	CBL/CCL/GR	3,480.0	7,390.0

Linked Zone	Bnch/St g	Sum of Entered Shot Total	Top (ftKB)	Btm (ftKB)	Date
SUSSEX, ORIGINAL HOLE		15	4,713.00	4,718.00	3/12/1996
NIORARA, ORIGINAL HOLE	A	60	7,094.01	7,100.01	8/17/2009
NIORARA, ORIGINAL HOLE	B	60	7,155.01	7,163.01	8/17/2009
NIORARA, ORIGINAL HOLE	B	16	7,160.00	7,162.00	3/8/1996
NIORARA, ORIGINAL HOLE	C	60	7,246.01	7,252.01	8/17/2009
CODELL, ORIGINAL HOLE		40	7,363.01	7,373.01	6/17/2000
CODELL, ORIGINAL HOLE		16	7,364.00	7,370.00	3/8/1996

Total (Sum) **267**

Stimulation Intervals

Start Date	Primary Job Type
3/9/1996	DRILLING/COMPLETION - ORIGINAL

Technical Result	Tech Result Details	Tech Result Note
------------------	---------------------	------------------

Comment

Start Date	Primary Job Type
6/21/2000	RE-FRAC

Technical Result	Tech Result Details	Tech Result Note
------------------	---------------------	------------------

Comment

Start Date	Primary Job Type
8/19/2009	RE-FRAC

Technical Result	Tech Result Details	Tech Result Note
------------------	---------------------	------------------

Comment

Start Date	Primary Job Type
3/13/1996	DRILLING/COMPLETION - ORIGINAL

Technical Result	Tech Result Details	Tech Result Note
------------------	---------------------	------------------

Comment