

1625 Broadway  
Suite 2000  
Denver, CO 80202  
  
Tel: 303.228.4000  
Fax: 303.228.4280  
www.nobleenergyinc.com



April 26, 2017

Colorado Oil and Gas Conservation Commission  
The Chancery Building  
1120 Lincoln Street, Suite 801  
Denver, CO 80203  
Attn: Mr. Matt Lepore, Director

RE: Wells Ranch BB11-674, Doc # 401231371  
Section 11: NW/4NW/4 Township 5 North, Range 63 West, 6th P.M.  
Weld County, Colorado

Dear Director:

Noble Energy, Inc. ("NEI") is planning to drill the captioned boundary well in accordance with the provisions of COGCC Rule 318A.e.

NEI's proposed wellbore spacing unit consists of the Sec 7: W/2NW/4, T5N-R62W; Sec 10: E/2NE/4, Sec 11: N/2, Sec 12: N/2, T5N, R63W, creating a 480-acre wellbore spacing unit for the Niobrara formation. NEI is the only owner within the proposed wellbore spacing unit, therefore NEI hereby attests that no notice letters are required under COGCC Rule 318Ae.(5).

Enclosed are copies of the following documents to assist you in your review and approval of NEI's proposed APD for the captioned well:

- Map & plat illustrating proposed wellbore spacing unit.

Thank you for your attention to the enclosed. NEI respectfully requests that the COGCC review the enclosed information and approve the Application for Permit to Drill the captioned well.

Sincerely,

Justin Garrett  
Regulatory Analyst II  
Noble Energy Inc.

# Wells Ranch BB11-674

## Proposed Spacing Unit – Noble Energy, Inc

W/2NW/4 Section 7, Township 5 North, Range 62 West

E/2NE/4 Section 10, Township 5 North, Range 63 West

N/2 Section 11, Township 5 North, Range 63 West

# N/2 Section 12, Township 5 North, Range 63 West



### Legend



Proposed 803.00± acre spacing unit



Bottom Hole Location

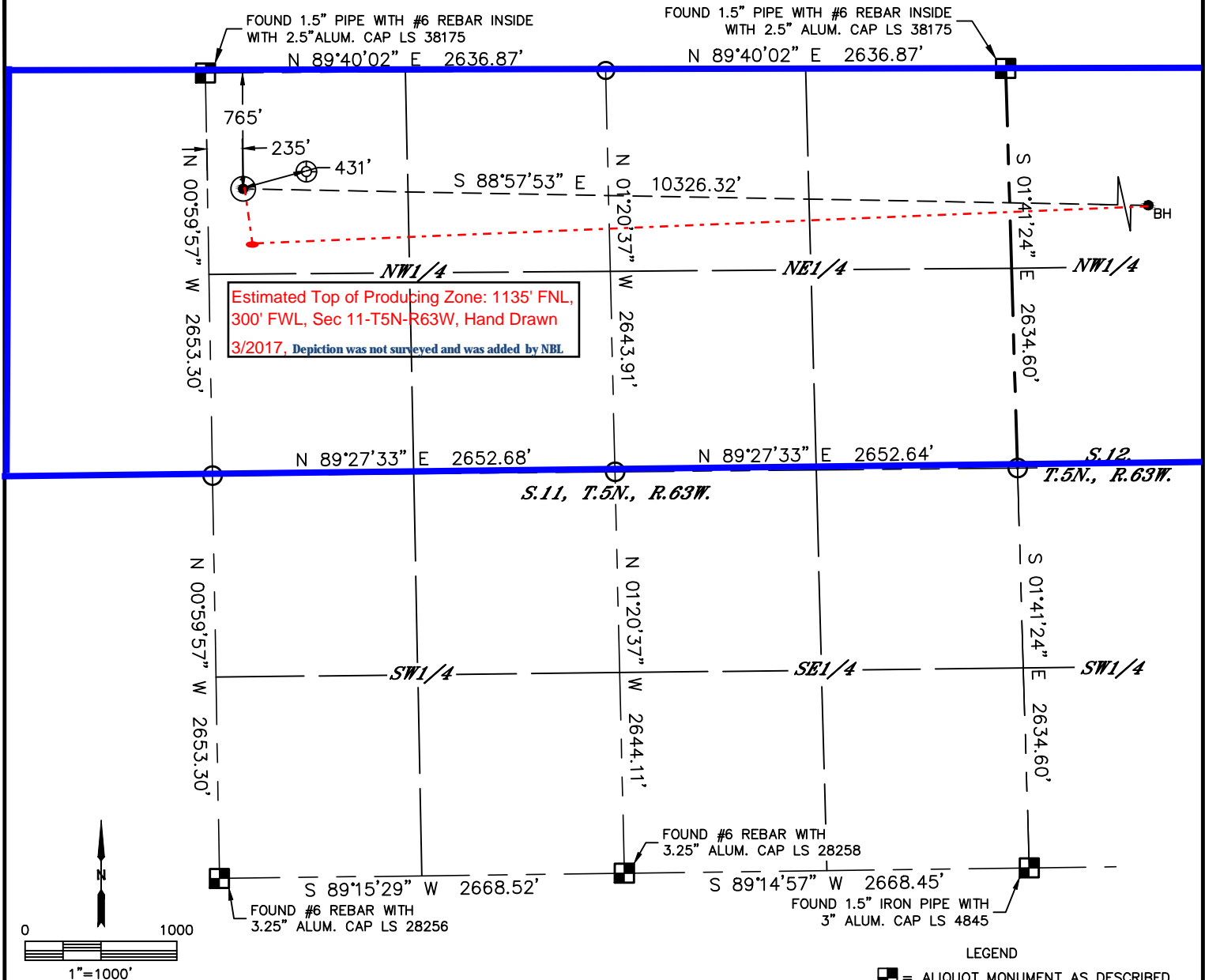


Lat40°, Inc. 6250 W. 10th Street, Unit 2, Greeley, CO 970-515-5294

# WELL LOCATION CERTIFICATE

WELLS RANCH BB11-674

SECTION: 11  
TOWNSHIP: 5N  
RANGE: 63W  
6TH. P.M.  
WELD COUNTY, CO



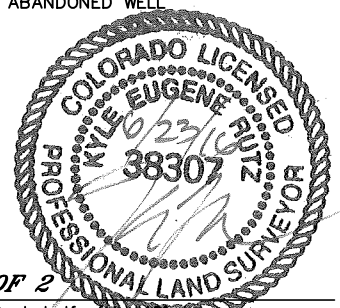
| CLIENT: NOBLE ENERGY, INC.        |          |           |          | LANDMAN: CORY NEIGHBORS |             |                        |         |
|-----------------------------------|----------|-----------|----------|-------------------------|-------------|------------------------|---------|
| INSTRUMENT OPERATOR: CHASE MILLER |          |           |          | SURVEY DATE: 10/26/2015 |             | SURFACE USE: RANGELAND |         |
| SHL FOOTAGE                       | SHL LAT° | SHL LONG° | SHL PDOP | SHL ELEV                | SHL 1/4/1/4 | SHL S-T-R              |         |
| 765                               | FNL      | 235       | FWL      | 40.41908                | -104.41268  | 2.0                    | 4685    |
|                                   |          |           |          |                         |             | NWNW                   | 11-5-63 |

| BHL FOOTAGE | BHL LAT° | BHL LONG°  | BHL S-T-R |
|-------------|----------|------------|-----------|
| 1060        | FNL      | 1          | FEL       |
|             | 40.41821 | -104.37562 | 12-5-63   |

| NEAREST CULTURAL ITEMS           |          |
|----------------------------------|----------|
| EX. WELLS RANCH USX BB 11-04     | ±431' NE |
| BUILDING                         | 5280'+   |
| BUILDING UNIT                    | 5280'+   |
| HIGH OCCUPANCY BUILDING UNIT     | 5280'+   |
| DESIGNATED OUTSIDE ACTIVITY AREA | 5280'+   |
| PUBLIC ROAD                      | 5280'+   |
| ABOVE GROUND UTILITY             | 5280'+   |
| RAILROAD                         | 5280'+   |
| PROPERTY LINE                    | ±235' W  |

NOTE:  
1) Bearings shown are Grid Bearings of the Colorado State Plane Coordinate System, North Zone, North American Datum 1983. The lineal dimensions as contained herein are based upon the "U.S. Survey Foot."  
2) Distances to section lines measured at 90 degrees from said section lines.  
3) Ground elevations are based on an observed GPS elevation (NAVD 1988 DATUM).  
4) Latitude and Longitude shown are (NAD 83 DATUM).  
5) IMPROVEMENTS: See LOCATION DRAWING for all visible improvements within 500' of oil and gas location.  
6) This map does not represent a boundary survey.

- LEGEND
- = ALIQUOT MONUMENT AS DESCRIBED
  - = CALCULATED POSITION
  - = SURFACE HOLE LOCATION (SHL)
  - ▲ = ENTRY POINT LOCATION (EP)
  - BH = BOTTOM HOLE LOCATION (BHL)
  - ⊙ = EXISTING WELL
  - ⊙ = ABANDONED WELL



**SHEET 1 OF 2**  
Kyle E. Rutz—On behalf of LAT40, INC.  
Colorado Licensed Professional Land Surveyor No. 38307  
DATE: 6/23/2016  
PROJECT#: 2015093

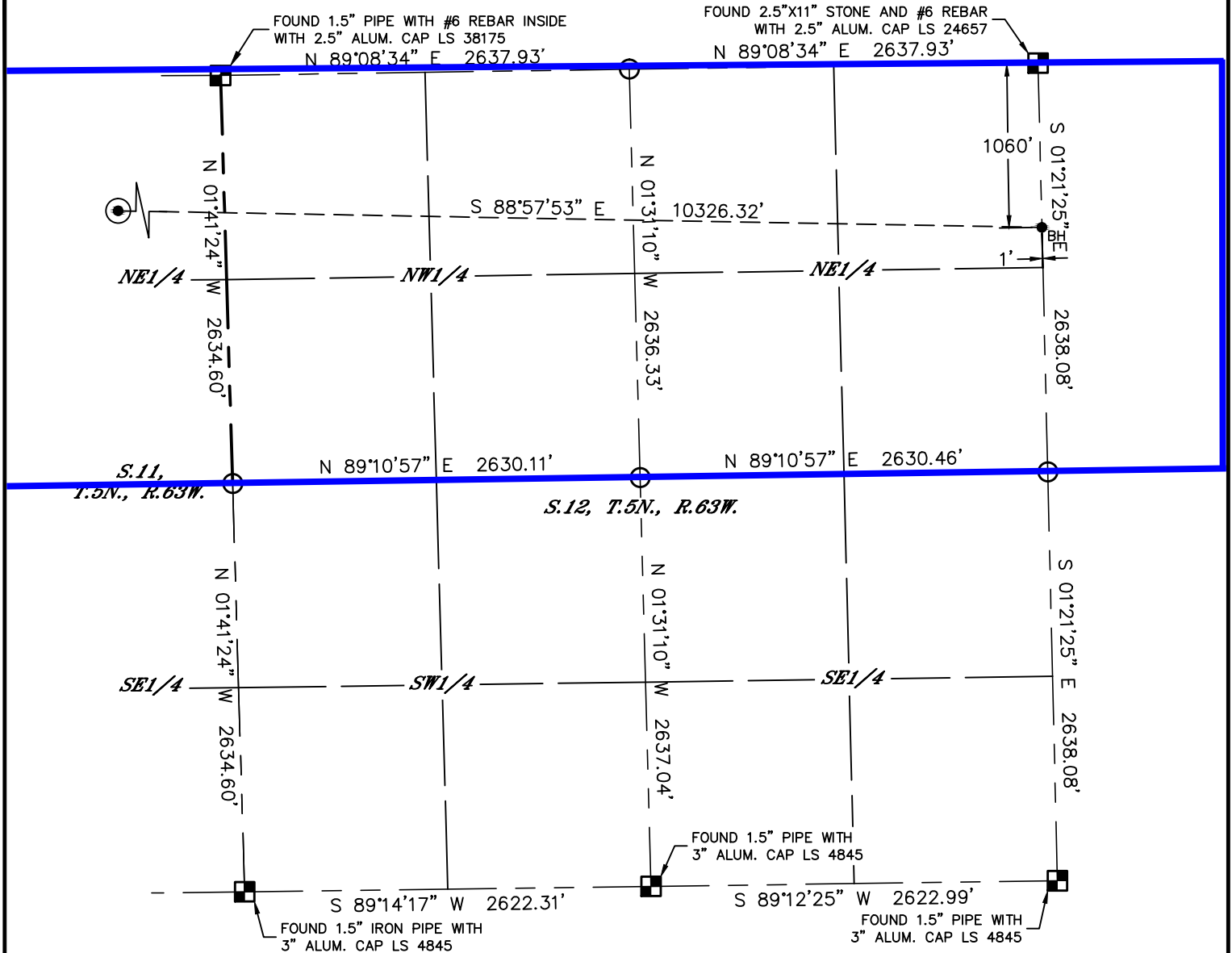


Lat40°, Inc. 6250 W. 10th Street, Unit 2, Greeley, CO 970-515-5294

# WELL LOCATION CERTIFICATE

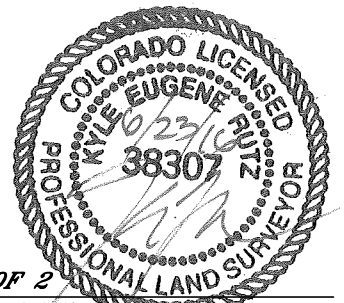
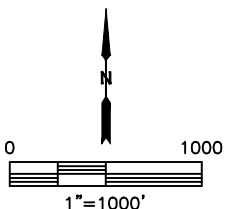
WELLS RANCH BB11-674

SECTION: 11  
TOWNSHIP: 5N  
RANGE: 63W  
6TH. P.M.  
WELD COUNTY, CO



## LEGEND

- = ALIQUOT MONUMENT AS DESCRIBED
- = CALCULATED POSITION
- = SURFACE HOLE LOCATION (SHL)
- ▲ = ENTRY POINT LOCATION (EP)
- = BOTTOM HOLE LOCATION (BHL)
- ⊙ = EXISTING WELL
- ⊙ = ABANDONED WELL



SHEET 2 OF 2

Kyle E. Rutz—On behalf of Lat40, Inc.  
Colorado Licensed Professional Land Surveyor No. 38307  
DATE: 6/23/2016  
PROJECT#: 2015093