

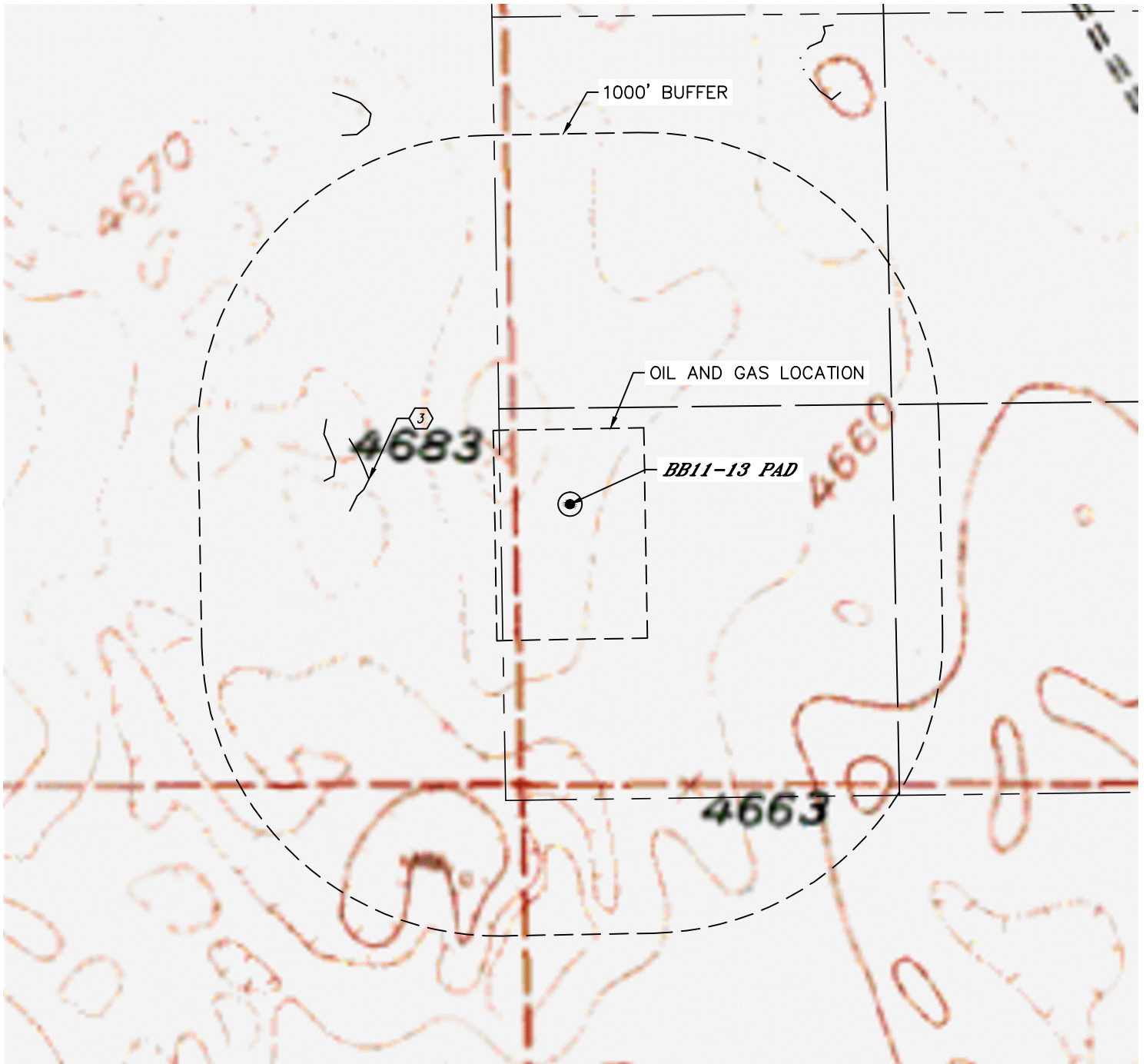


Lat40°, Inc. 6250 W. 10th Street, Unit 2, Greeley, CO 970-515-5294

HYDROLOGY MAP

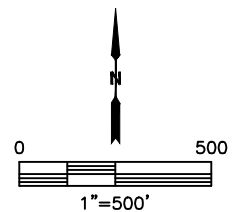
BB11-13 PAD

SECTION: 11
TOWNSHIP: 5N
RANGE: 63W
6TH. P.M.
WELD COUNTY, CO



DISTANCES MEASURED FROM EDGE OF OIL AND GAS LOCATION.

③ LOW AREA 424' W



DATE: 1/21/2016
PROJECT#: 2015093