

## Rangely surface clean up – RWSU McLaughlin 1-32

### McLaughlin 1-32 well pad

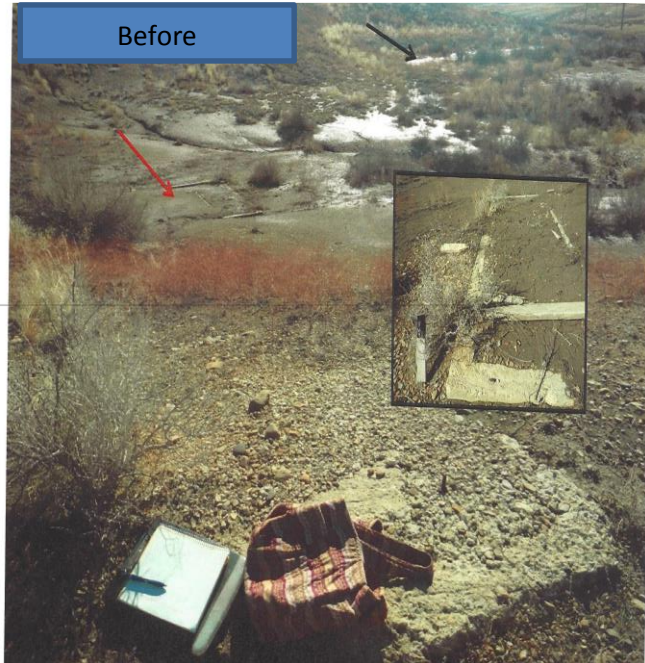
#### Restoration:

1. A 100ft radius around the well marker was cleaned. All miscellaneous debris and trash were properly disposed.
- The eroded areas by the anchor were backfilled and erosion mitigation was installed. (south of pad)



## Rangely surface clean up – RWSU McLaughlin 1-32

2. The concrete on the edge of the location (West end) and the foundation adjacent to the pad was removed. All known associated lines were also removed.





# Rangely surface clean up – RWSU McLaughlin 1-32

## McLaughlin 1-32 /Facility (GPS 40.10570n, 108.86610)

1. All known lines were Hydro excavated and removed.





## Rangely surface clean up – RWSU McLaughlin 1-32

Before



Before





## Rangely surface clean up – RWSU McLaughlin 1-32



Pipe clean up by the road. South of the location.



## Rangely surface clean up – RWSU McLaughlin 1-32

Before





## Rangely surface clean up – RWSU McLaughlin 1-32





## Rangely surface clean up – RWSU McLaughlin 1-32





## Rangely surface clean up – RWSU McLaughlin 1-32



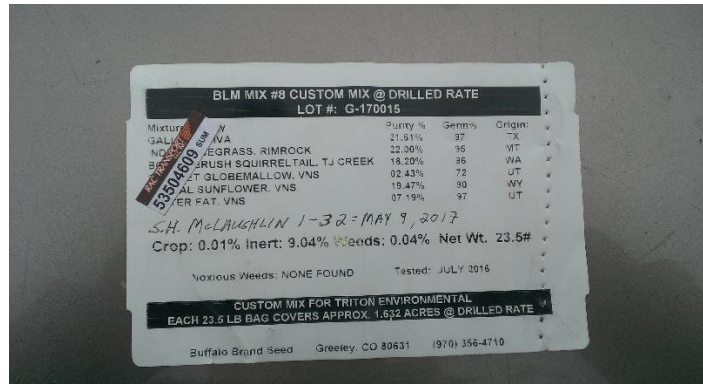


## Rangely surface clean up – RWSU McLaughlin 1-32





## Rangely surface clean up – RWSU McLaughlin 1-32



- All of the concrete was hauled off.
- All trash of the trash was properly disposed of.
- All the metal was NORM (no issues) and placed in the metal bin.
- All the 2'' pipe by the fence towards the high way was removed.
- BMP installed.

# Antonio Ruiz

## Facility site manager

Chevron Environmental management company

432-301-0097