

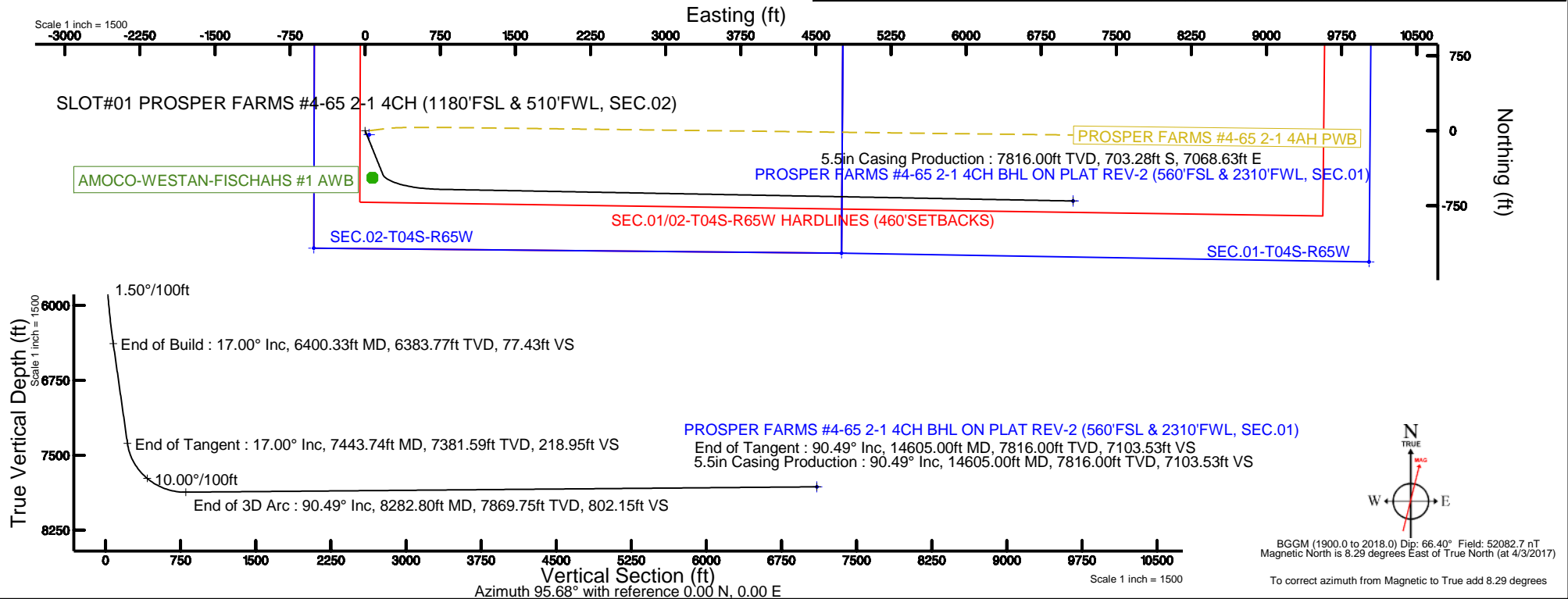
Burlington Resources

Location: COLORADO Slot: SLOT#01 PROSPER FARMS #4-65 2-1 4CH (1180'FSL & 510'FWL, SEC.02)
Field: ARAPAHOE COUNTY (NAD83/TN) Well: PROSPER FARMS #4-65 2-1 4CH
Facility: SEC.02-T04S-R65W Wellbore: PROSPER FARMS #4-65 2-1 4CH PWB

Plot reference wellpath is PROSPER FARMS #4-65 2-1 4CH (REV-C.0) PWB		Grid System: NAD83 / Lambert Colorado SP, Central Zone (502), US feet
True vertical depths are referenced to RIG (26.25KB) (RKB)		* = Wellpath was transformed from a different geodetic datum
Measured depths are referenced to RIG (26.25KB) (RKB)		North Reference: True north
RIG (26.25KB) (RKB) to Mean Sea Level: 5658.25 feet		Scale: True distance
Mean Sea Level to Mud line (At Slot: SLOT#01 PROSPER FARMS #4-65 2-1 4CH (1180'FSL & 510'FWL, SEC.02)): 0 feet		Depths are in feet
Coordinates are in feet referenced to Slot		Created by: adamkat on 2017-05-09
		Database: WA_DEN_Denver_Defn

Location Information

Facility Name				Grid East (US ft)	Grid North (US ft)	Latitude	Longitude
SEC.02-T04S-R65W				3242233.139	1691470.907	39°43'43.460"N	104°38'19.560"W
Slot	Local N (ft)	Local E (ft)	Grid East (US ft)	Grid North (US ft)	Latitude	Longitude	
SLOT#01 PROSPER FARMS #4-65 2-1 4CH (1180'FSL & 510'FWL, SEC.02)	40.47	-39.85	3242192.911	1691511.002	39°43'43.860"N	104°38'20.070"W	
RIG (26.25KB) (RKB) to Mud line (At Slot: SLOT#01 PROSPER FARMS #4-65 2-1 4CH (1180'FSL & 510'FWL, SEC.02))						5658.25ft	
Mean Sea Level to Mud line (At Slot: SLOT#01 PROSPER FARMS #4-65 2-1 4CH (1180'FSL & 510'FWL, SEC.02))						0ft	
RIG (26.25KB) (RKB) to Mean Sea Level						5658.25ft	



REFERENCE WELLPATH IDENTIFICATION			
Operator	Burlington Resources	Slot	SLOT#01 PROSPER FARMS #4-65 2-1 4CH (1180'FSL & 510'FWL, SEC.02)
Area	COLORADO	Well	PROSPER FARMS #4-65 2-1 4CH
Field	ARAPAHOE COUNTY (NAD83/TN)	Wellbore	PROSPER FARMS #4-65 2-1 4CH PWB
Facility	SEC.02-T04S-R65W		

REPORT SETUP INFORMATION			
Projection System	NAD83 / Lambert Colorado SP, Central Zone (502), US feet	Software System	WellArchitect® 5.0
North Reference	True	User	Adamkat
Scale	0.999996	Report Generated	5/9/2017 at 11:46:34 AM
Convergence at slot	0.55° East	Database/Source file	WA_DEN_Denver_Defn/PROSPER_FARMS_#4-65_2-1_4CH_REV-C.0_PWP.xml

WELLPATH LOCATION						
	Local coordinates		Grid coordinates		Geographic coordinates	
	North[ft]	East[ft]	Easting[US ft]	Northing[US ft]	Latitude	Longitude
Slot Location	40.47	-39.85	3242192.91	1691511.00	39°43'43.860"N	104°38'20.070"W
Facility Reference Pt			3242233.14	1691470.91	39°43'43.460"N	104°38'19.560"W
Field Reference Pt			3256721.09	1679994.75	39°41'48.650"N	104°35'15.610"W

WELLPATH DATUM			
Calculation method	Minimum curvature	RIG (26.25'KB) (RKB) to Facility Vertical Datum	5658.25ft
Horizontal Reference Pt	Slot	RIG (26.25'KB) (RKB) to Mean Sea Level	5658.25ft
Vertical Reference Pt	RIG (26.25'KB) (RKB)	RIG (26.25'KB) (RKB) to Mud Line at Slot (SLOT#01 PROSPER FARMS #4-65 2-1 4CH (1180'FSL & 510'FWL, SEC.02))	5658.25ft
MD Reference Pt	RIG (26.25'KB) (RKB)	Section Origin	N 0.00, E 0.00 ft
Field Vertical Reference	Mean Sea Level	Section Azimuth	95.68°

REFERENCE WELLPATH IDENTIFICATION			
Operator	Burlington Resources	Slot	SLOT#01 PROSPER FARMS #4-65 2-1 4CH (1180'FSL & 510'FWL, SEC.02)
Area	COLORADO	Well	PROSPER FARMS #4-65 2-1 4CH
Field	ARAPAHOE COUNTY (NAD83/TN)	Wellbore	PROSPER FARMS #4-65 2-1 4CH PWB
Facility	SEC.02-T04S-R65W		

WELLPATH DATA (168 stations) † = interpolated/extrapolated station									
MD [ft]	Inclination [°]	Azimuth [°]	TVD [ft]	Vert Sect [ft]	North [ft]	East [ft]	DLS [°/100ft]	Comments	
0.00†	0.000	158.042	0.00	0.00	0.00	0.00	0.00		
26.25	0.000	158.042	26.25	0.00	0.00	0.00	0.00	Tie On	
126.25†	0.000	158.042	126.25	0.00	0.00	0.00	0.00		
226.25†	0.000	158.042	226.25	0.00	0.00	0.00	0.00		
326.25†	0.000	158.042	326.25	0.00	0.00	0.00	0.00		
426.25†	0.000	158.042	426.25	0.00	0.00	0.00	0.00		
526.25†	0.000	158.042	526.25	0.00	0.00	0.00	0.00		
626.25†	0.000	158.042	626.25	0.00	0.00	0.00	0.00		
726.25†	0.000	158.042	726.25	0.00	0.00	0.00	0.00		
826.25†	0.000	158.042	826.25	0.00	0.00	0.00	0.00		
926.25†	0.000	158.042	926.25	0.00	0.00	0.00	0.00		
1026.25†	0.000	158.042	1026.25	0.00	0.00	0.00	0.00		
1126.25†	0.000	158.042	1126.25	0.00	0.00	0.00	0.00		
1226.25†	0.000	158.042	1226.25	0.00	0.00	0.00	0.00		
1326.25†	0.000	158.042	1326.25	0.00	0.00	0.00	0.00		
1426.25†	0.000	158.042	1426.25	0.00	0.00	0.00	0.00		
1526.25†	0.000	158.042	1526.25	0.00	0.00	0.00	0.00		
1626.25†	0.000	158.042	1626.25	0.00	0.00	0.00	0.00		
1714.75†	0.000	158.042	1714.75	0.00	0.00	0.00	0.00	Fox Hills Aquifer*	
1726.25†	0.000	158.042	1726.25	0.00	0.00	0.00	0.00		
1826.25†	0.000	158.042	1826.25	0.00	0.00	0.00	0.00		
1926.25†	0.000	158.042	1926.25	0.00	0.00	0.00	0.00		
1944.75†	0.000	158.042	1944.75	0.00	0.00	0.00	0.00	Pierre Shale*	
2026.25†	0.000	158.042	2026.25	0.00	0.00	0.00	0.00		
2126.25†	0.000	158.042	2126.25	0.00	0.00	0.00	0.00		
2144.75†	0.000	158.042	2144.75	0.00	0.00	0.00	0.00	SURFACE CASING	
2226.25†	0.000	158.042	2226.25	0.00	0.00	0.00	0.00		
2326.25†	0.000	158.042	2326.25	0.00	0.00	0.00	0.00		
2426.25†	0.000	158.042	2426.25	0.00	0.00	0.00	0.00		
2526.25†	0.000	158.042	2526.25	0.00	0.00	0.00	0.00		
2626.25†	0.000	158.042	2626.25	0.00	0.00	0.00	0.00		
2726.25†	0.000	158.042	2726.25	0.00	0.00	0.00	0.00		
2826.25†	0.000	158.042	2826.25	0.00	0.00	0.00	0.00		
2926.25†	0.000	158.042	2926.25	0.00	0.00	0.00	0.00		
3026.25†	0.000	158.042	3026.25	0.00	0.00	0.00	0.00		
3126.25†	0.000	158.042	3126.25	0.00	0.00	0.00	0.00		
3226.25†	0.000	158.042	3226.25	0.00	0.00	0.00	0.00		
3326.25†	0.000	158.042	3326.25	0.00	0.00	0.00	0.00		
3426.25†	0.000	158.042	3426.25	0.00	0.00	0.00	0.00		
3526.25†	0.000	158.042	3526.25	0.00	0.00	0.00	0.00		
3626.25†	0.000	158.042	3626.25	0.00	0.00	0.00	0.00		
3726.25†	0.000	158.042	3726.25	0.00	0.00	0.00	0.00		
3826.25†	0.000	158.042	3826.25	0.00	0.00	0.00	0.00		
3926.25†	0.000	158.042	3926.25	0.00	0.00	0.00	0.00		
4026.25†	0.000	158.042	4026.25	0.00	0.00	0.00	0.00		

REFERENCE WELLPATH IDENTIFICATION			
Operator	Burlington Resources	Slot	SLOT#01 PROSPER FARMS #4-65 2-1 4CH (1180'FSL & 510'FWL, SEC.02)
Area	COLORADO	Well	PROSPER FARMS #4-65 2-1 4CH
Field	ARAPAHOE COUNTY (NAD83/TN)	Wellbore	PROSPER FARMS #4-65 2-1 4CH PWB
Facility	SEC.02-T04S-R65W		

WELLPATH DATA (168 stations) † = interpolated/extrapolated station								
MD [ft]	Inclination [°]	Azimuth [°]	TVD [ft]	Vert Sect [ft]	North [ft]	East [ft]	DLS [°/100ft]	Comments
4126.25†	0.000	158.042	4126.25	0.00	0.00	0.00	0.00	
4226.25†	0.000	158.042	4226.25	0.00	0.00	0.00	0.00	
4326.25†	0.000	158.042	4326.25	0.00	0.00	0.00	0.00	
4426.25†	0.000	158.042	4426.25	0.00	0.00	0.00	0.00	
4526.25†	0.000	158.042	4526.25	0.00	0.00	0.00	0.00	
4626.25†	0.000	158.042	4626.25	0.00	0.00	0.00	0.00	
4726.25†	0.000	158.042	4726.25	0.00	0.00	0.00	0.00	
4826.25†	0.000	158.042	4826.25	0.00	0.00	0.00	0.00	
4926.25†	0.000	158.042	4926.25	0.00	0.00	0.00	0.00	
5026.25†	0.000	158.042	5026.25	0.00	0.00	0.00	0.00	
5126.25†	0.000	158.042	5126.25	0.00	0.00	0.00	0.00	
5226.25†	0.000	158.042	5226.25	0.00	0.00	0.00	0.00	
5267.00	0.000	158.042	5267.00	0.00	0.00	0.00	0.00	End of Tangent
5326.25†	0.889	158.042	5326.25	0.21	-0.43	0.17	1.50	
5426.25†	2.389	158.042	5426.20	1.54	-3.08	1.24	1.50	
5526.25†	3.889	158.042	5526.05	4.08	-8.16	3.29	1.50	
5626.25†	5.389	158.042	5625.72	7.83	-15.66	6.31	1.50	
5726.25†	6.889	158.042	5725.14	12.79	-25.57	10.31	1.50	
5826.25†	8.389	158.042	5824.25	18.96	-37.90	15.28	1.50	
5926.25†	9.889	158.042	5922.98	26.33	-52.63	21.22	1.50	
6026.25†	11.389	158.042	6021.26	34.89	-69.75	28.12	1.50	
6126.25†	12.889	158.042	6119.02	44.65	-89.26	35.99	1.50	
6226.25†	14.389	158.042	6216.20	55.59	-111.13	44.80	1.50	
6326.25†	15.889	158.042	6312.73	67.70	-135.35	54.57	1.50	
6400.33	17.000	158.042	6383.77	77.43	-154.79	62.41	1.50	End of Build
6426.25†	17.000	158.042	6408.56	80.94	-161.82	65.24	0.00	
6526.25†	17.000	158.042	6504.19	94.51	-188.94	76.18	0.00	
6626.25†	17.000	158.042	6599.82	108.07	-216.06	87.11	0.00	
6726.25†	17.000	158.042	6695.45	121.64	-243.17	98.04	0.00	
6826.25†	17.000	158.042	6791.08	135.20	-270.29	108.97	0.00	
6926.25†	17.000	158.042	6886.71	148.76	-297.40	119.91	0.00	
7026.25†	17.000	158.042	6982.35	162.33	-324.52	130.84	0.00	
7126.25†	17.000	158.042	7077.98	175.89	-351.64	141.77	0.00	
7163.66†	17.000	158.042	7113.75	180.96	-361.78	145.86	0.00	Pierre 300
7226.25†	17.000	158.042	7173.61	189.45	-378.75	152.71	0.00	
7326.25†	17.000	158.042	7269.24	203.02	-405.87	163.64	0.00	
7426.25†	17.000	158.042	7364.87	216.58	-432.98	174.57	0.00	
7443.74	17.000	158.042	7381.59	218.95	-437.73	176.48	0.00	End of Tangent
7526.25†	21.483	136.775	7459.57	235.96	-459.96	191.37	10.00	
7543.71†	22.694	133.429	7475.75	241.04	-464.61	196.00	10.00	Pierre 125
7626.25†	29.127	121.490	7550.00	271.76	-486.08	224.74	10.00	
7671.48†	32.974	116.869	7588.75	293.16	-497.40	245.12	10.00	Sharon Springs Shale
7726.25†	37.813	112.430	7633.39	323.16	-510.55	273.96	10.00	
7764.32†	41.258	109.882	7662.75	346.51	-519.28	296.56	10.00	Niobrara Fm.
7806.86†	45.165	107.422	7693.75	374.89	-528.57	324.15	10.00	Niobrara A Marl

REFERENCE WELLPATH IDENTIFICATION			
Operator	Burlington Resources	Slot	SLOT#01 PROSPER FARMS #4-65 2-1 4CH (1180'FSL & 510'FWL, SEC.02)
Area	COLORADO	Well	PROSPER FARMS #4-65 2-1 4CH
Field	ARAPAHOE COUNTY (NAD83/TN)	Wellbore	PROSPER FARMS #4-65 2-1 4CH PWB
Facility	SEC.02-T04S-R65W		

WELLPATH DATA (168 stations) † = interpolated/extrapolated station								
MD [ft]	Inclination [°]	Azimuth [°]	TVD [ft]	Vert Sect [ft]	North [ft]	East [ft]	DLS [°/100ft]	Comments
7826.25†	46.962	106.410	7707.20	388.59	-532.63	337.51	10.00	
7871.35†	51.172	104.268	7736.75	422.17	-541.62	370.37	10.00	Niobrara B Chalk
7902.67†	54.117	102.926	7755.75	446.82	-547.47	394.56	10.00	Niobrara B Marl
7926.25†	56.343	101.980	7769.20	466.06	-551.64	413.47	10.00	
7953.43†	58.918	100.948	7783.75	488.90	-556.20	435.97	10.00	Niobrara C Chalk
8007.96†	64.105	99.035	7809.75	536.67	-564.49	483.15	10.00	Niobrara C Marl Upper
8026.25†	65.851	98.433	7817.49	553.22	-567.01	499.53	10.00	
8075.45†	70.557	96.887	7835.75	598.86	-573.09	544.80	10.00	Niobrara C Marl Lower
8126.25†	75.429	95.382	7850.60	647.42	-578.27	593.08	10.00	
8152.99†	77.998	94.618	7856.75	673.44	-580.53	619.00	10.00	Niobrara D Chalk
8226.25†	85.044	92.589	7867.55	745.80	-585.07	691.27	10.00	
8282.80	90.487	91.055	7869.75	802.15	-586.87	747.72	10.00	End of 3D Arc
8282.80†	90.487	91.055	7869.75	802.16	-586.87	747.73	0.00	Target @ Landing Point
8326.25†	90.487	91.055	7869.38	845.46	-587.67	791.17	0.00	
8426.25†	90.487	91.055	7868.53	945.13	-589.51	891.15	0.00	
8526.25†	90.487	91.055	7867.68	1044.80	-591.35	991.13	0.00	
8626.25†	90.487	91.055	7866.83	1144.47	-593.19	1091.11	0.00	
8726.25†	90.487	91.055	7865.98	1244.14	-595.03	1191.09	0.00	
8826.25†	90.487	91.055	7865.13	1343.82	-596.87	1291.07	0.00	
8926.25†	90.487	91.055	7864.28	1443.49	-598.72	1391.04	0.00	
9026.25†	90.487	91.055	7863.43	1543.16	-600.56	1491.02	0.00	
9126.25†	90.487	91.055	7862.58	1642.83	-602.40	1591.00	0.00	
9226.25†	90.487	91.055	7861.73	1742.50	-604.24	1690.98	0.00	
9326.25†	90.487	91.055	7860.88	1842.17	-606.08	1790.96	0.00	
9426.25†	90.487	91.055	7860.03	1941.84	-607.92	1890.94	0.00	
9526.25†	90.487	91.055	7859.18	2041.51	-609.76	1990.92	0.00	
9626.25†	90.487	91.055	7858.33	2141.18	-611.60	2090.90	0.00	
9726.25†	90.487	91.055	7857.48	2240.85	-613.45	2190.88	0.00	
9826.25†	90.487	91.055	7856.63	2340.52	-615.29	2290.86	0.00	
9926.25†	90.487	91.055	7855.78	2440.19	-617.13	2390.84	0.00	
10026.25†	90.487	91.055	7854.93	2539.86	-618.97	2490.82	0.00	
10126.25†	90.487	91.055	7854.08	2639.53	-620.81	2590.80	0.00	
10226.25†	90.487	91.055	7853.23	2739.20	-622.65	2690.78	0.00	
10326.25†	90.487	91.055	7852.38	2838.87	-624.49	2790.76	0.00	
10426.25†	90.487	91.055	7851.53	2938.54	-626.33	2890.74	0.00	
10526.25†	90.487	91.055	7850.68	3038.21	-628.18	2990.72	0.00	
10626.25†	90.487	91.055	7849.83	3137.88	-630.02	3090.70	0.00	
10726.25†	90.487	91.055	7848.98	3237.56	-631.86	3190.67	0.00	
10826.25†	90.487	91.055	7848.13	3337.23	-633.70	3290.65	0.00	
10926.25†	90.487	91.055	7847.28	3436.90	-635.54	3390.63	0.00	
11026.25†	90.487	91.055	7846.43	3536.57	-637.38	3490.61	0.00	
11126.25†	90.487	91.055	7845.58	3636.24	-639.22	3590.59	0.00	
11226.25†	90.487	91.055	7844.73	3735.91	-641.06	3690.57	0.00	
11326.25†	90.487	91.055	7843.88	3835.58	-642.91	3790.55	0.00	
11426.25†	90.487	91.055	7843.03	3935.25	-644.75	3890.53	0.00	

REFERENCE WELLPATH IDENTIFICATION			
Operator	Burlington Resources	Slot	SLOT#01 PROSPER FARMS #4-65 2-1 4CH (1180'FSL & 510'FWL, SEC.02)
Area	COLORADO	Well	PROSPER FARMS #4-65 2-1 4CH
Field	ARAPAHOE COUNTY (NAD83/TN)	Wellbore	PROSPER FARMS #4-65 2-1 4CH PWB
Facility	SEC.02-T04S-R65W		

WELLPATH DATA (168 stations) † = interpolated/extrapolated station									
MD [ft]	Inclination [°]	Azimuth [°]	TVD [ft]	Vert Sect [ft]	North [ft]	East [ft]	DLS [°/100ft]	Comments	
11526.25†	90.487	91.055	7842.17	4034.92	-646.59	3990.51	0.00		
11626.25†	90.487	91.055	7841.32	4134.59	-648.43	4090.49	0.00		
11726.25†	90.487	91.055	7840.47	4234.26	-650.27	4190.47	0.00		
11826.25†	90.487	91.055	7839.62	4333.93	-652.11	4290.45	0.00		
11926.25†	90.487	91.055	7838.77	4433.60	-653.95	4390.43	0.00		
12026.25†	90.487	91.055	7837.92	4533.27	-655.80	4490.41	0.00		
12126.25†	90.487	91.055	7837.07	4632.94	-657.64	4590.39	0.00		
12226.25†	90.487	91.055	7836.22	4732.61	-659.48	4690.37	0.00		
12326.25†	90.487	91.055	7835.37	4832.28	-661.32	4790.35	0.00		
12426.25†	90.487	91.055	7834.52	4931.95	-663.16	4890.32	0.00		
12526.25†	90.487	91.055	7833.67	5031.62	-665.00	4990.30	0.00		
12626.25†	90.487	91.055	7832.82	5131.30	-666.84	5090.28	0.00		
12726.25†	90.487	91.055	7831.97	5230.97	-668.68	5190.26	0.00		
12826.25†	90.487	91.055	7831.12	5330.64	-670.53	5290.24	0.00		
12926.25†	90.487	91.055	7830.27	5430.31	-672.37	5390.22	0.00		
13026.25†	90.487	91.055	7829.42	5529.98	-674.21	5490.20	0.00		
13126.25†	90.487	91.055	7828.57	5629.65	-676.05	5590.18	0.00		
13226.25†	90.487	91.055	7827.72	5729.32	-677.89	5690.16	0.00		
13326.25†	90.487	91.055	7826.87	5828.99	-679.73	5790.14	0.00		
13426.25†	90.487	91.055	7826.02	5928.66	-681.57	5890.12	0.00		
13526.25†	90.487	91.055	7825.17	6028.33	-683.41	5990.10	0.00		
13626.25†	90.487	91.055	7824.32	6128.00	-685.26	6090.08	0.00		
13726.25†	90.487	91.055	7823.47	6227.67	-687.10	6190.06	0.00		
13826.25†	90.487	91.055	7822.62	6327.34	-688.94	6290.04	0.00		
13926.25†	90.487	91.055	7821.77	6427.01	-690.78	6390.02	0.00		
14026.25†	90.487	91.055	7820.92	6526.68	-692.62	6490.00	0.00		
14126.25†	90.487	91.055	7820.07	6626.35	-694.46	6589.98	0.00		
14226.25†	90.487	91.055	7819.22	6726.02	-696.30	6689.95	0.00		
14326.25†	90.487	91.055	7818.37	6825.69	-698.14	6789.93	0.00		
14426.25†	90.487	91.055	7817.52	6925.37	-699.99	6889.91	0.00		
14526.25†	90.487	91.055	7816.67	7025.04	-701.83	6989.89	0.00		
14605.00†	90.487	91.055	7816.00	7103.53	-703.28	7068.63	0.00	BHL TVD	
14605.00	90.487	91.055	7816.00 [†]	7103.53	-703.28	7068.63	0.00	End of Tangent	

HOLE & CASING SECTIONS - Ref Wellbore: PROSPER FARMS #4-65 2-1 4CH PWB Ref Wellpath: PROSPER FARMS #4-65 2-1 4CH (REV-C.0) PWP									
String/Diameter	Start MD [ft]	End MD [ft]	Interval [ft]	Start TVD [ft]	End TVD [ft]	Start N/S [ft]	Start E/W [ft]	End N/S [ft]	End E/W [ft]
9.625in Casing Surface	26.25	2100.00	2073.75	26.25	2100.00	0.00	0.00	0.00	0.00
8.75in Open Hole	2100.00	14605.00	12505.00	2100.00	7816.00	0.00	0.00	-703.28	7068.63
5.5in Casing Production	26.25	14605.00	14578.75	26.25	7816.00	0.00	0.00	-703.28	7068.63

REFERENCE WELLPATH IDENTIFICATION			
Operator	Burlington Resources	Slot	SLOT#01 PROSPER FARMS #4-65 2-1 4CH (1180'FSL & 510'FWL, SEC.02)
Area	COLORADO	Well	PROSPER FARMS #4-65 2-1 4CH
Field	ARAPAHOE COUNTY (NAD83/TN)	Wellbore	PROSPER FARMS #4-65 2-1 4CH PWB
Facility	SEC.02-T04S-R65W		

TARGETS									
Name	MD [ft]	TVD [ft]	North [ft]	East [ft]	Grid East [US ft]	Grid North [US ft]	Latitude	Longitude	Shape
SEC.01-T04S-R65W		-0.25	-40.47	39.85	3242233.14	1691470.91	39°43'43.460"N	104°38'19.560"W	polygon
SEC.01-T04S-R65W NE CORNER		-0.25	3957.23	10066.26	3252221.15	1695563.44	39°44'22.949"N	104°36'11.210"W	point
SEC.01-T04S-R65W SE CORNER		-0.25	-1312.32	10023.05	3252227.89	1690293.75	39°43'30.871"N	104°36'11.790"W	point
SEC.02-T04S-R65W		-0.25	-40.47	39.85	3242233.14	1691470.91	39°43'43.460"N	104°38'19.560"W	polygon
SEC.02-T04S-R65W NE CORNER		-0.25	3991.40	4787.94	3246942.78	1695547.58	39°44'23.302"N	104°37'18.779"W	point
SEC.02-T04S-R65W NW CORNER		-0.25	4019.00	-498.52	3241656.33	1695525.07	39°44'23.579"N	104°38'26.452"W	point
SEC.02-T04S-R65W SE CORNER		-0.25	-1224.96	4756.01	3246960.29	1690331.18	39°43'31.750"N	104°37'19.200"W	point
SEC.02-T04S-R65W SW CORNER		-0.25	-1174.76	-513.24	3241690.83	1690331.43	39°43'32.250"N	104°38'26.639"W	point
SEC.01/02-T04S-R65W HARDLINES (460'SETBACKS)		7751.75	-40.47	39.85	3242233.14	1691470.91	39°43'43.460"N	104°38'19.560"W	polygon
PROSPER FARMS #4-65 2-1 4CH BHL ON PLAT REV-1 (560'FSL & 2310'FWL, SEC.01)		7753.75	-703.28	7068.63	3249267.85	1690874.76	39°43'36.900"N	104°36'49.600"W	point
1) PROSPER FARMS #4-65 2-1 4CH BHL ON PLAT REV-2 (560'FSL & 2310'FWL, SEC.01)	14605.00	7816.00	-703.28	7068.63	3249267.85	1690874.76	39°43'36.900"N	104°36'49.600"W	point

SURVEY PROGRAM - Ref Wellbore: PROSPER FARMS #4-65 2-1 4CH PWB Ref Wellpath: PROSPER FARMS #4-65 2-1 4CH (REV-C.0) PWP				
Start MD [ft]	End MD [ft]	Positional Uncertainty Model	Log Name/Comment	Wellbore
26.25	14605.00	Custom BHI NaviTrak (Standard Rotating) (Rockies 0.03Gt model)		PROSPER FARMS #4-65 2-1 4CH PWB

REFERENCE WELLPATH IDENTIFICATION				
Operator	Burlington Resources	Slot	SLOT#01 PROSPER FARMS #4-65 2-1 4CH (1180'FSL & 510'FWL, SEC.02)	
Area	COLORADO	Well	PROSPER FARMS #4-65 2-1 4CH	
Field	ARAPAHOE COUNTY (NAD83/TN)	Wellbore	PROSPER FARMS #4-65 2-1 4CH PWB	
Facility	SEC.02-T04S-R65W			

WELLPATH COMMENTS					
MD [ft]	Inclination [°]	Azimuth [°]	TVD [ft]	Comment	
1714.75	0.000	158.042	1714.75	Fox Hills Aquifer*	
1944.75	0.000	158.042	1944.75	Pierre Shale*	
2144.75	0.000	158.042	2144.75	SURFACE CASING	
7163.66	17.000	158.042	7113.75	Pierre 300	
7543.71	22.694	133.429	7475.75	Pierre 125	
7671.48	32.974	116.869	7588.75	Sharon Springs Shale	
7764.32	41.258	109.882	7662.75	Niobrara Fm.	
7806.86	45.165	107.422	7693.75	Niobrara A Marl	
7871.35	51.172	104.268	7736.75	Niobrara B Chalk	
7902.67	54.117	102.926	7755.75	Niobrara B Marl	
7953.43	58.918	100.948	7783.75	Niobrara C Chalk	
8007.96	64.105	99.035	7809.75	Niobrara C Marl Upper	
8075.45	70.557	96.887	7835.75	Niobrara C Marl Lower	
8152.99	77.998	94.618	7856.75	Niobrara D Chalk	
8282.80	90.487	91.055	7869.75	Target @ Landing Point	
14605.00	90.487	91.055	7816.00	BHL TVD	

DESIGN COMMENTS					
MD [ft]	Inclination [°]	Azimuth [°]	TVD [ft]	Comment	
26.25	0.000	158.042	26.25	Tie On	
5267.00	0.000	158.042	5267.00	End of Tangent	
6400.33	17.000	158.042	6383.77	End of Build	
7443.74	17.000	158.042	7381.59	End of Tangent	
8282.80	90.487	91.055	7869.75	End of 3D Arc	
14605.00	90.487	91.055	7816.00	End of Tangent	