

HALLIBURTON

iCem[®] Service

EXTRACTION OIL & GAS

Date: Saturday, February 11, 2017

Kiteley #9 Surface

Job Date: Monday, January 23, 2017

Sincerely,

Julia Nichols

Legal Notice

Disclaimer:

All information in this report is provided subject to the terms and conditions which govern the services provided by Halliburton. Halliburton personnel use their best efforts in gathering information and their best judgment in interpreting it, but any interpretation, research, analysis or recommendation furnished by Halliburton are opinions based upon inferences from measurements and empirical relationships and assumptions, which inferences and empirical relationships and assumptions are not infallible, and with respect to which professionals in the industry may differ. Accordingly, HALLIBURTON IS UNABLE TO GUARANTEE THE ACCURACY OF ANY CHART INTERPRETATION, RESEARCH ANALYSIS, OR JOB RECOMMENDATION and any interpretation or recommendation is not for use of or reliance upon by any third party. The customer has full responsibility for any of its decisions which are based on the information provided in this report.

Table of Contents

1.0 Cementing Job Summary 4

 1.1 Executive Summary4

2.0 Real-Time Job Summary 7

 2.1 Job Event Log7

3.0 Attachments..... 9

 3.1 Custom Results – Job Chart with Events9

 3.2 Custom Results – Job Chart without Events.....10

1.0 Cementing Job Summary

1.1 Executive Summary

Halliburton appreciates the opportunity to perform the cementing services on the **Kiteley 9** cement **Surface** casing job. A pre-job safety meeting was held before the job where details of the job were discussed, potential safety hazards were reviewed, and environmental compliance procedures were outlined.

Approximately 30 barrels of cement were returned to surface.

Halliburton maintains a continuous quality improvement process and appreciates any comments or suggestions that you may have. Halliburton again thanks you for the opportunity to perform service work on this well. We hope to be your solutions provider for future projects.

Respectfully,

Halliburton [Ft Lupton]

HALLIBURTON

Cementing Job Summary

The Road to Excellence Starts with Safety

| | | | | | | | | | | |
|---|--------------------|---------------------------------|---------------------------|---------------|------------------------|----------------|---------------|--------------|---------------------|---------------|
| Sold To #: 389404 | Ship To #: 3770129 | Quote #: | Sales Order #: 0903799700 | | | | | | | |
| Customer: EXTRACTION OIL & GAS - | | Customer Rep: SHAWN McINTYR | | | | | | | | |
| Well Name: KITELEY | Well #: 9 | API/UWI #: 05-123-43922-00 | | | | | | | | |
| Field: WATTENBERG | City (SAP): MEAD | County/Parish: WELD | State: COLORADO | | | | | | | |
| Legal Description: NW SW-21-3N-88W-1369FSL-637FWL | | | | | | | | | | |
| Contractor: | | Rig/Platform Name/Num: Spud Rig | | | | | | | | |
| Job BOM: 7521 | | | | | | | | | | |
| Well Type: HORIZONTAL OIL | | | | | | | | | | |
| Sales Person: HALAMERICA\HX38199 | | Srv Supervisor: Jesse Slaughter | | | | | | | | |
| Job | | | | | | | | | | |
| Formation Name | | | | | | | | | | |
| Formation Depth (MD) | Top | Bottom | | | | | | | | |
| Form Type | BHST | | | | | | | | | |
| Job depth MD | 1576ft | Job Depth TVD | 1578ft | | | | | | | |
| Water Depth | | Wk Ht Above Floor | 4ft | | | | | | | |
| Perforation Depth (MD) | From | To | | | | | | | | |
| Well Data | | | | | | | | | | |
| Description | New / Used | Size in | ID in | Weight lbm/ft | Thread | Grade | Top MD ft | Bottom MD ft | Top TVD ft | Bottom TVD ft |
| Casing | | 9.625 | 8.921 | 36 | | | 0 | 1576 | 0 | 1576 |
| Open Hole Section | | | 13.5 | | | | 0 | 1578 | 0 | 1578 |
| Tools and Accessories | | | | | | | | | | |
| Type | Size in | Qty | Make | Depth ft | | Type | Size in | Qty | Make | |
| Guide Shoe | 9.625 | | | | | Top Plug | 9.625 | 1 | HES | |
| Float Shoe | 9.625 | | | 1576 | | Bottom Plug | 9.625 | | HES | |
| Float Collar | 9.625 | | | | | SSR plug set | 9.625 | | HES | |
| Insert Float | 9.625 | | | | | Plug Container | 9.625 | 1 | HES | |
| Stage Tool | 9.625 | | | | | Centralizers | 9.625 | | HES | |
| Fluid Data | | | | | | | | | | |
| Stage/Plug #: 1 | | | | | | | | | | |
| Fluid # | Stage Type | Fluid Name | Qty | Qty UoM | Mixing Density lbm/gal | Yield ft3/sack | Mix Fluid Gal | Rate bbl/min | Total Mix Fluid Gal | |
| 1 | Red Dye Spacer | Red Dye Spacer | 20 | bbl | 8.33 | | | 4 | | |
| Stage/Plug #: 2 | | | | | | | | | | |
| Fluid # | Stage Type | Fluid Name | Qty | Qty UoM | Mixing Density lbm/gal | Yield ft3/sack | Mix Fluid Gal | Rate bbl/min | Total Mix Fluid Gal | |
| 2 | SwiftCem | SWIFTCM (TM) SYSTEM | 550 | sack | 13.5 | 1.74 | | 7 | 9.2 | |
| 9.20 Gal | | FRESH WATER | | | | | | | | |

last updated on 2/11/2017 10:50:54 AM

Page 1 of 2

HALLIBURTON

Cementing Job Summary

| Fluid # | Stage Type | Fluid Name | Qty | Qty UoM | Mixing Density lbm/gal | Yield ft3/sack | Mix Fluid Gal | Rate bbl/min | Total Mix Fluid Gal |
|---------------------|-------------|-------------|-------|---------|---------------------------|-------------------|------------------|-----------------|------------------------|
| 3 | Fresh Water | Fresh Water | 118.6 | bbl | 8.33 | | | 7 | |
| | | | | | | | | | |
| Cement Left In Pipe | | Amount | 42 ft | | Reason | | | Shoe Joint | |
| | | | | | | | | | |
| Comment | | | | | | | | | |

2.0 Real-Time Job Summary

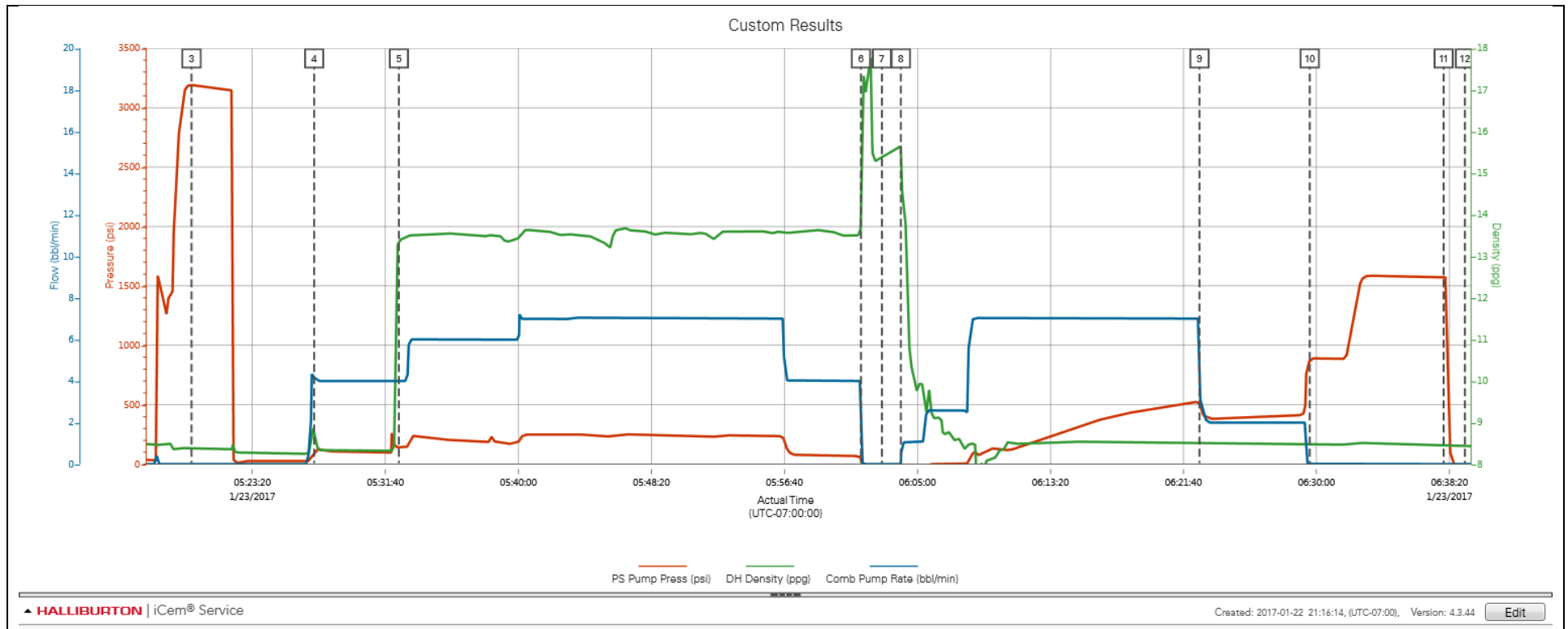
2.1 Job Event Log

| Type | Seq. No. | Activity | Graph Label | Date | Time | Source | PS Pump Press (psi) | DH Density (ppg) | Comb Pump Rate (bbl/min) | Comments |
|-------|----------|---------------------|------------------------|-----------|----------|--------|------------------------|---------------------|-----------------------------|--|
| Event | 1 | Safety Meeting | Call Out | 1/23/2017 | 20:30:00 | USER | | | | |
| Event | 2 | Safety Meeting | Crew Leave Yard | 1/23/2017 | 02:00:00 | USER | | | | |
| Event | 3 | Safety Meeting | Arrive At Loc | 1/23/2017 | 03:00:00 | USER | | | | RIG WAS RUNNING CASING UPON HES ARRIVAL |
| Event | 4 | Safety Meeting | Rig-Up Equipment | 1/23/2017 | 04:00:00 | USER | | | | 1 RED TIGER, 2 660 BULK TRUCKS |
| Event | 5 | Safety Meeting | Pre-job Safety Meeting | 1/23/2017 | 04:50:00 | USER | | | | |
| Event | 6 | Start Job | Start Job | 1/23/2017 | 05:10:00 | COM5 | | | | TD 1578 FT, TP 1576, SHOE 42 FT, CSG 9.625 IN 36 IN, HOLE 13.5 IN, MUD WT 8.9 PPG |
| Event | 7 | Prime Pumps | Prime Pumps | 1/23/2017 | 05:11:18 | COM5 | | | | FRESH WATER |
| Event | 8 | Test Lines | Test Lines | 1/23/2017 | 05:19:31 | USER | 3192.00 | 8.38 | 0.00 | TESTED LINES TO 3190 PSI PRESSURE HOLDING |
| Event | 9 | Pump Spacer 1 | Pump Red Dye Spacer | 1/23/2017 | 05:27:12 | USER | 98.00 | 8.86 | 4.20 | FRESH WATER WITH 2 LBS RED DYE |
| Event | 10 | Pump Cement | Pump Cement | 1/23/2017 | 05:32:31 | USER | 147.00 | 13.40 | 4.00 | 550 SKS AT 13.5 PPG, 1.74 FT3/SK, 9.2 GAL/SK |
| Event | 11 | Shutdown | Shutdown | 1/23/2017 | 06:01:28 | USER | 37.00 | 14.21 | 0.00 | |
| Event | 12 | Drop Top Plug | Drop Top Plug | 1/23/2017 | 06:02:46 | USER | -18.00 | 15.40 | 0.00 | PLUG LAUNCHED |
| Event | 13 | Pump Displacement | Pump Displacement | 1/23/2017 | 06:03:57 | USER | -18.00 | 15.65 | 0.00 | FRESH WATER |
| Event | 14 | Slow Rate | Slow Rate | 1/23/2017 | 06:22:40 | USER | 502.00 | 8.51 | 5.30 | SLOW RATE 10 BBLS PRIOR TO CALCULATED DISPLACEMENT |
| Event | 15 | Bump Plug | Bump Plug | 1/23/2017 | 06:29:35 | COM5 | 876.00 | 8.50 | 0.00 | TESTED CASING AT 1578 PSI FOR 5 MIN AS PER COMPANY REP |
| Event | 16 | Check Floats | Check Floats | 1/23/2017 | 06:37:58 | USER | 1578.00 | 8.45 | 0.00 | FLOATS HOLDING. HES RETURNED 1 BBL H2O TO PUMP. |
| Event | 17 | End Job | End Job | 1/23/2017 | 06:39:18 | COM5 | -25.00 | 8.44 | 0.00 | PIPE WAS STATIC DURING JOB. GOOD CIRCULATION THROUGHOUT JOB. HES RETURNED 30 BBLS CEMENT TO SURFACE. |
| Event | 18 | Pre-Rig Down Safety | Rig Down Equipment | 1/23/2017 | 06:45:00 | USER | | | | |

| | | | | | | |
|--|----|---------------------|---------------------|-----------|----------|------|
| Meeting | | | | | | |
| Event | 19 | Crew Leave Location | Crew Leave Location | 1/23/2017 | 07:30:00 | USER |
| Event | 20 | Comment | Comment | 1/23/2017 | 07:31:00 | USER |
| THANK YOU FOR USING HALLIBURTON CEMENT DEPARTMENT. JESSE SLAUGHTER AND CREW. | | | | | | |

3.0 Attachments

3.1 Custom Results – Job Chart with Events



3.2 Custom Results – Job Chart without Events

