

HALLIBURTON

iCem[®] Service

EXTRACTION OIL & GAS

United States of America

Date: Saturday, March 04, 2017

Kiteley 10

Production

Job Date: Tuesday, February 14, 2017

Sincerely,

Justin Lansdale

Legal Notice

Disclaimer:

All information in this report is provided subject to the terms and conditions which govern the services provided by Halliburton. Halliburton personnel use their best efforts in gathering information and their best judgment in interpreting it, but any interpretation, research, analysis or recommendation furnished by Halliburton are opinions based upon inferences from measurements and empirical relationships and assumptions, which inferences and empirical relationships and assumptions are not infallible, and with respect to which professionals in the industry may differ. Accordingly, HALLIBURTON IS UNABLE TO GUARANTEE THE ACCURACY OF ANY CHART INTERPRETATION, RESEARCH ANALYSIS, OR JOB RECOMMENDATION and any interpretation or recommendation is not for use of or reliance upon by any third party. The customer has full responsibility for any of its decisions which are based on the information provided in this report.

Table of Contents

Cementing Job Summary 4

 Executive Summary4

Real-Time Job Summary 7

 Job Event Log.....7

 Custom Graph.....9

1.0 Cementing Job Summary

1.1 Executive Summary

Halliburton appreciates the opportunity to perform the cementing services on the **Kiteley 10** cement **Production** casing job. A pre-job safety meeting was held before the job where details of the job were discussed, potential safety hazards were reviewed, and environmental compliance procedures were outlined.

Halliburton maintains a continuous quality improvement process and appreciates any comments or suggestions that you may have. Halliburton again thanks you for the opportunity to perform service work on this well. We hope to be your solutions provider for future projects.

Respectfully,

Halliburton [Fort Lupton]

The Road to Excellence Starts with Safety

Sold To #: 369404		Ship To #: 3770114		Quote #:		Sales Order #: 0903840225				
Customer: EXTRACTION OIL & GAS				Customer Rep: Kaylen Holgate						
Well Name: KITELEY			Well #: 10		API/UWI #: 05-123-43923-00					
Field: WATTENBERG		City (SAP): MEAD		County/Parish: WELD		State: COLORADO				
Legal Description: NW SW-21-3N-68W-1350FSL-653FWL										
Contractor: CYCLONE				Rig/Platform Name/Num: CYCLONE 37						
Job BOM: 7523										
Well Type: HORIZONTAL OIL										
Sales Person: HALAMERICA\HX38199				Srv Supervisor: Vaughn Oteri						
Job										
Formation Name										
Formation Depth (MD)		Top		Bottom						
Form Type				BHST						
Job depth MD		11660ft		Job Depth TVD						
Water Depth				Wk Ht Above Floor						
Perforation Depth (MD)		From		To						
Well Data										
Description	New / Used	Size in	ID in	Weight lbm/ft	Thread	Grade	Top MD ft	Bottom MD ft	Top TVD ft	Bottom TVD ft
Casing		9.625	8.921	36			0	1587	0	0
Casing		5.5	4.778	20			0	11640	0	0
Open Hole Section			8.5				1587	11660	0	7100
Tools and Accessories										
Type	Size in	Qty	Make	Depth ft		Type	Size in	Qty	Make	
Guide Shoe	5.5					Top Plug	5.5	1	KLX	
Float Shoe	5.5			11640		Bottom Plug	5.5			
Float Collar	5.5			11635		SSR plug set	5.5			
Insert Float	5.5					Plug Container	5.5	1	HES	
Stage Tool	5.5					Centralizers	5.5			
Fluid Data										
Stage/Plug #: 1										
Fluid #	Stage Type	Fluid Name	Qty	Qty UoM	Mixing Density lbm/gal	Yield ft³/sack	Mix Fluid Gal	Rate bbl/min	Total Mix Fluid Gal	
1	11.5 lb/gal Tuned Spacer III	Tuned Spacer III	50	bbl	11.5	3.74		6		

Fluid #	Stage Type	Fluid Name	Qty	Qty UoM	Mixing Density lbm/gal	Yield ft3/sack	Mix Fluid Gal	Rate bbl/min	Total Mix Fluid Gal
2	ElastiCem W/O CBL	ELASTICEM (TM) SYSTEM	150	sack	13.2	1.57		6	7.48
Fluid #	Stage Type	Fluid Name	Qty	Qty UoM	Mixing Density lbm/gal	Yield ft3/sack	Mix Fluid Gal	Rate bbl/min	Total Mix Fluid Gal
3	ElastiCem Tail	ELASTICEM (TM) SYSTEM	1800	sack	13.2	1.57		6	7.49
Fluid #	Stage Type	Fluid Name	Qty	Qty UoM	Mixing Density lbm/gal	Yield ft3/sack	Mix Fluid Gal	Rate bbl/min	Total Mix Fluid Gal
4	Displacement	Displacement	258	bbl	8.33			8	
Cement Left In Pipe		Amount	4 ft		Reason			Shoe Joint	
Comment 75bbl of cement back to surface									

2.0 Real-Time Job Summary

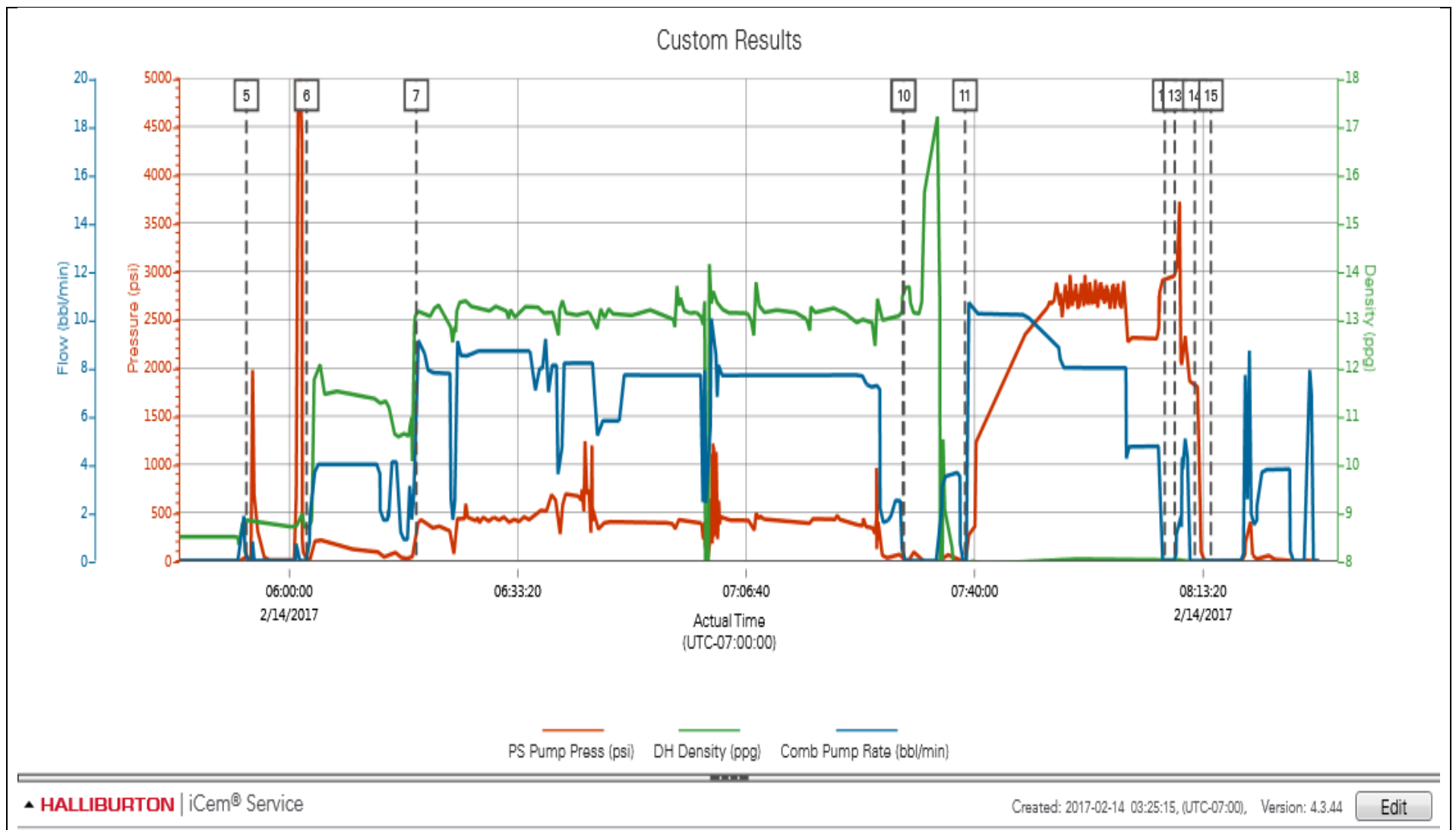
2.1 Job Event Log

Type	Seq. No.	Activity	Graph Label	Date	Time	Source	Comments
Event	1	Call Out	Call Out	2/14/2017	17:00:00	USER	Call out from ARC hub
Event	2	Arrive At Loc	Arrive At Loc	2/14/2017	02:00:00	USER	Arrived on location met with company rep to discuss job process and concerns
Event	3	Other	Other	2/14/2017	02:02:00	USER	TD-11660 TP-11640 FC-11635 Surf-1587 Mud-9.5ppg OH-8.5 Casing 5.5 20#
Event	4	Start Job	Start Job	2/14/2017	05:30:12	COM4	Held pre-job safety meeting with all hands on location to discuss job process and hazards
Event	5	Test Lines	Test Lines	2/14/2017	05:53:45	COM4	Pressure tested pumps and lines found 2" valve on manifold was leaking at grease fitting replaced valve and retested found no leaks and pressure held good 4980psi
Event	6	Pump Spacer 1	Pump Spacer 1	2/14/2017	06:02:32	COM4	Mixed 50bbl of 11.5ppg Tuned spacer III at 4.0 bpm 343psi
Event	7	Pump Cement	Pump Cement	2/14/2017	06:18:33	COM4	Mixed 1950sks or 545bbl of 13.2ppg Y-1.57 G/sk-7.48 Elasticem at 8.0bpm 523psi
Event	8	Shutdown	Shutdown	2/14/2017	07:29:31	COM4	
Event	9	Clean Lines	Clean Lines	2/14/2017	07:29:36	COM4	Washed pumps and line with fresh water
Event	10	Drop Top Plug	Drop Top Plug	2/14/2017	07:29:39	COM4	KLX tool hand released plug witnessed by company rep
Event	11	Pump Displacement	Pump Displacement	2/14/2017	07:38:35	COM4	Pumped 258bbl of fresh water to displace cement
Event	12	Bump Plug	Bump Plug	2/14/2017	08:07:44	COM4	Bumped plug 500psi over final pump pressure
Event	13	Pressure Up Well	Pressure Up Well	2/14/2017	08:09:11	COM4	Pressure up on plug to blow disc 3728psi
Event	14	Other	Other	2/14/2017	08:12:07	COM4	Released pressure back to pump truck to

check floats 2.0bbl back floats held good

Event	15	End Job	End Job	2/14/2017	08:14:28	COM4	75bbl of cement back to surface
-------	----	---------	---------	-----------	----------	------	---------------------------------

2.2 Custom Graph



iCem® Service

(v. 4.3.44)

Created: Saturday, March 04, 2017

